

**NOTES:**

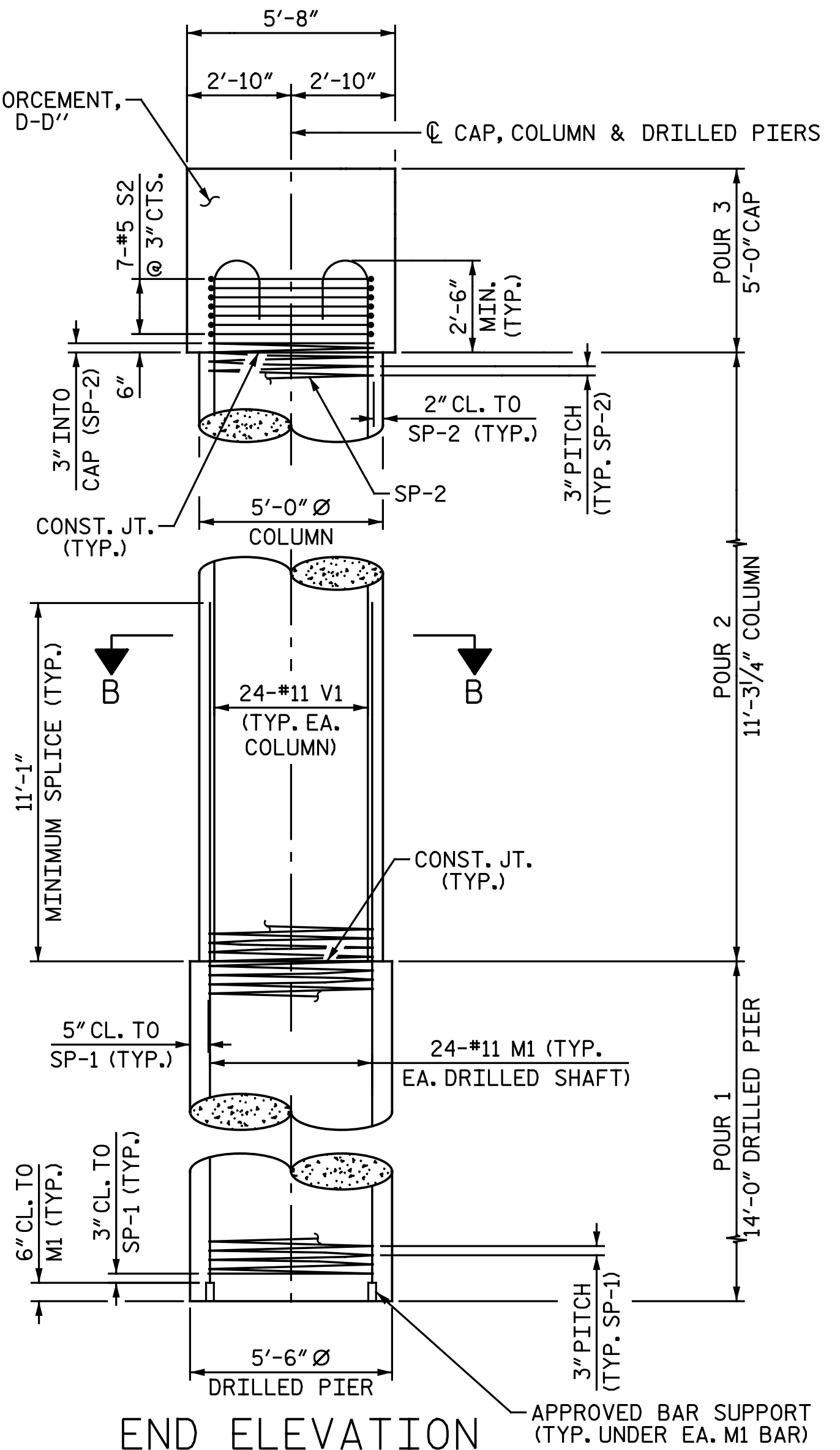
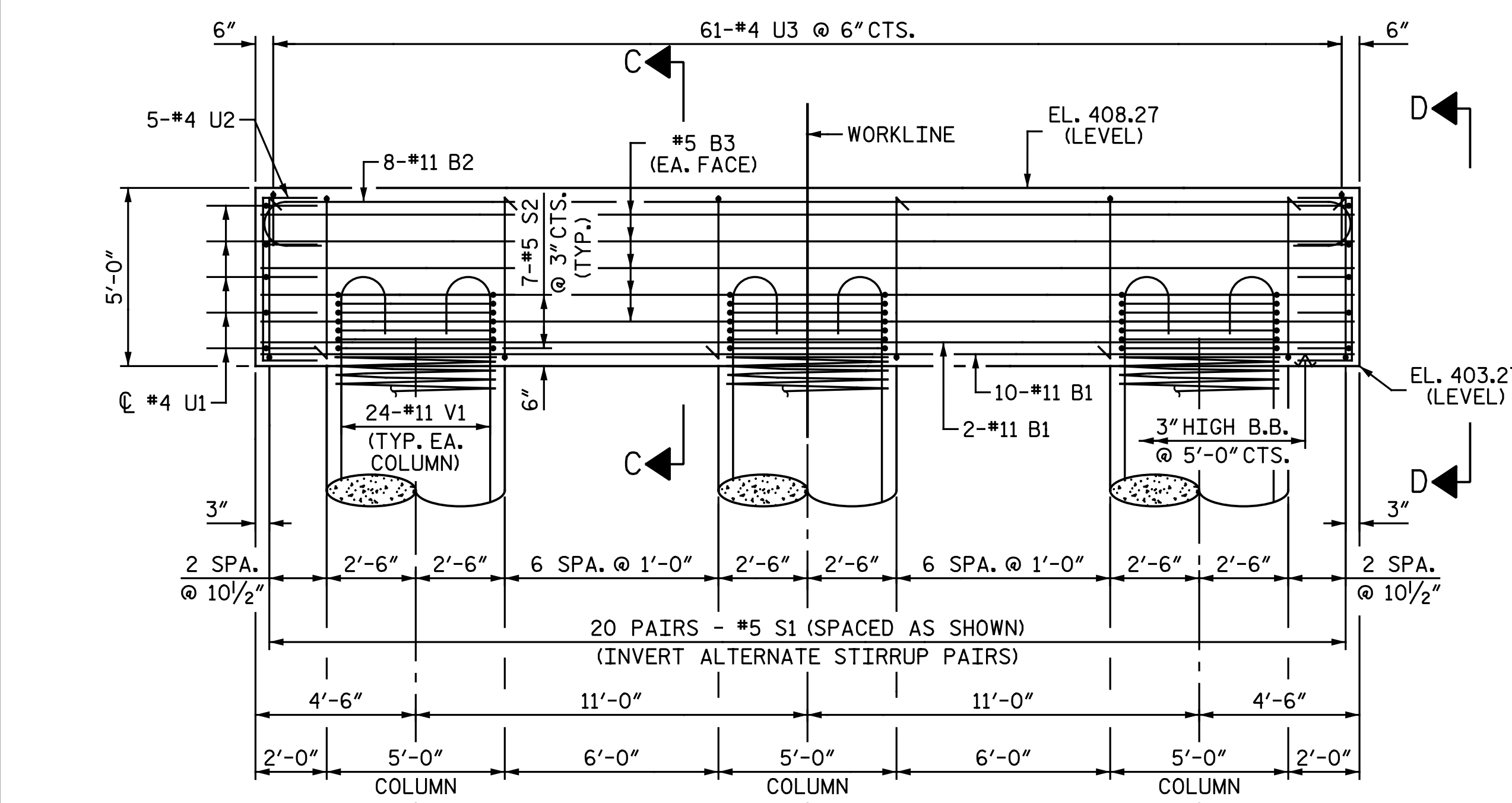
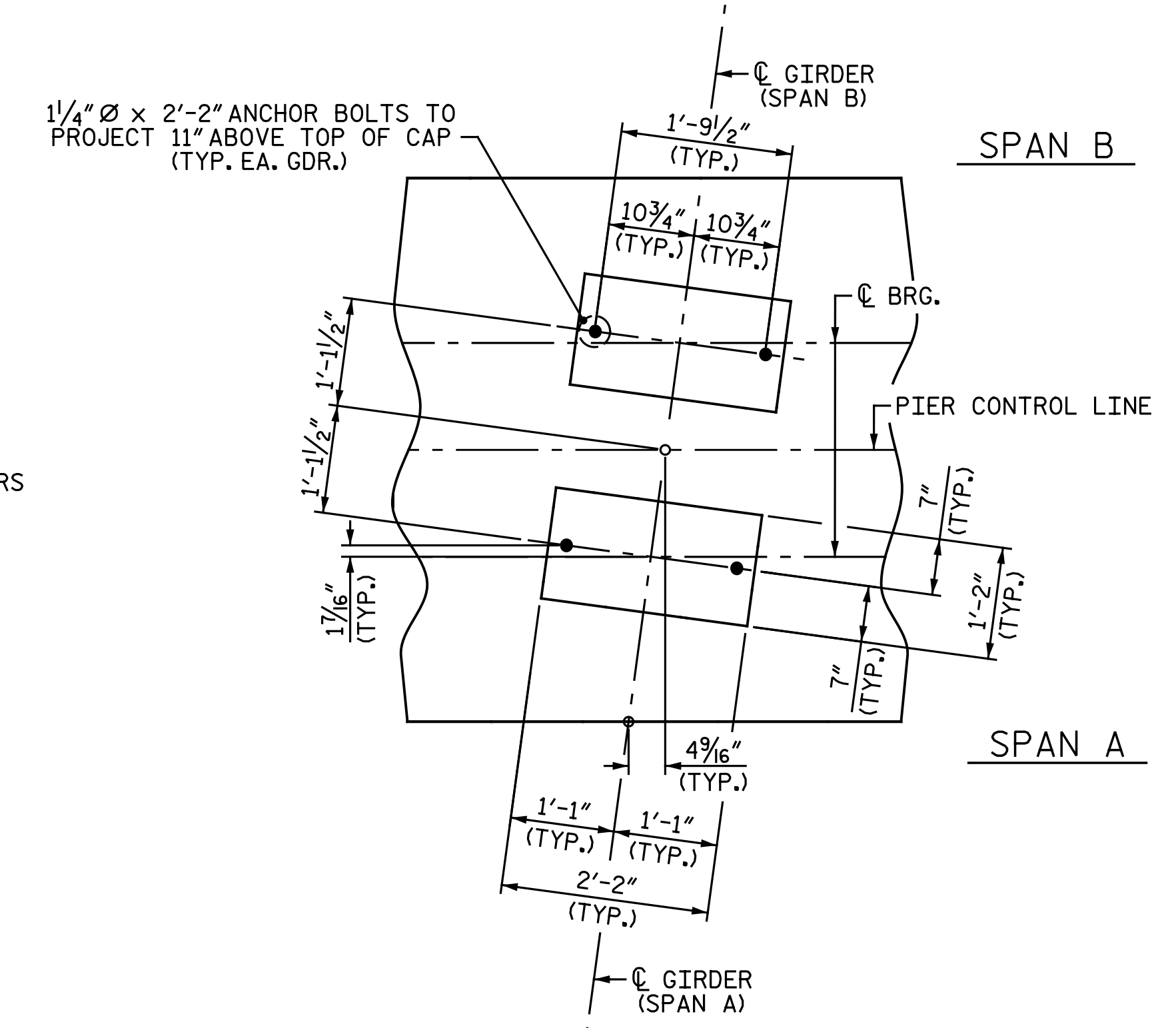
FOR "SECTION A-A", SEE SHEET 2 OF 3.  
 FOR "SECTION B-B", SEE SHEET 2 OF 3.  
 FOR "SECTION C-C", SEE SHEET 3 OF 3.  
 FOR "VIEW D-D", SEE SHEET 3 OF 3.  
 FOR "DETAIL B", SEE SHEET 2 OF 3.  
 SEE SHEET 3 OF 3 FOR ADDITIONAL NOTES AND DETAILS.

THE TOP SURFACE OF THE PIER CAPS SHALL BE CURED IN ACCORDANCE WITH THE STANDARD SPECIFICATIONS EXCEPT THE MEMBRANE CURING COMPOUND SHALL NOT BE USED.

THE LOCATION OF THE CONSTRUCTION JOINT IN THE DRILLED PIERS IS BASED ON AN APPROXIMATE GROUND LINE ELEVATION. IF THE CONSTRUCTION JOINT IS ABOVE THE ACTUAL GROUND ELEVATION, THE CONTRACTOR SHALL PLACE THE CONSTRUCTION JOINT 1 FOOT BELOW THE GROUND LINE.

METHOD A WATERPROOFING SHOULD BE APPLIED AROUND THE CONSTRUCTION JOINT AT THE COLUMN AND DRILLED PIER FOR EACH COLUMN.

DAMPPOOFING SHOULD BE APPLIED TO ANY PART OF THE COLUMN THAT IS BELOW THE GROUND LINE.



PROJECT NO. U-3308  
 DURHAM COUNTY  
 STATION: 24+55.20 -LALT-  
13+22.18 -CSXN-  
 SHEET 1 OF 3



**Michael Baker INTERNATIONAL**

Michael Baker Engineering  
 8000 Regency Parkway, Suite 600  
 Cary, North Carolina 27518  
 NC License No.: F-1084

REVISIONS					
NO.	BY:	DATE:	NO.	BY:	DATE:
1			3		
2			4		

5/3/2016 9:37:45 AM  
 File Name: Y:\Projects\NCDOT\U-3308\Structures\Drawings\Final\404\_032\_U3308\_SMU\_P101.dgn  
 onayhew

DRAWN BY: M. D. MAYHEW DATE: 5-9-14  
 CHECKED BY: A. L. PHILLIPS DATE: 5-12-14