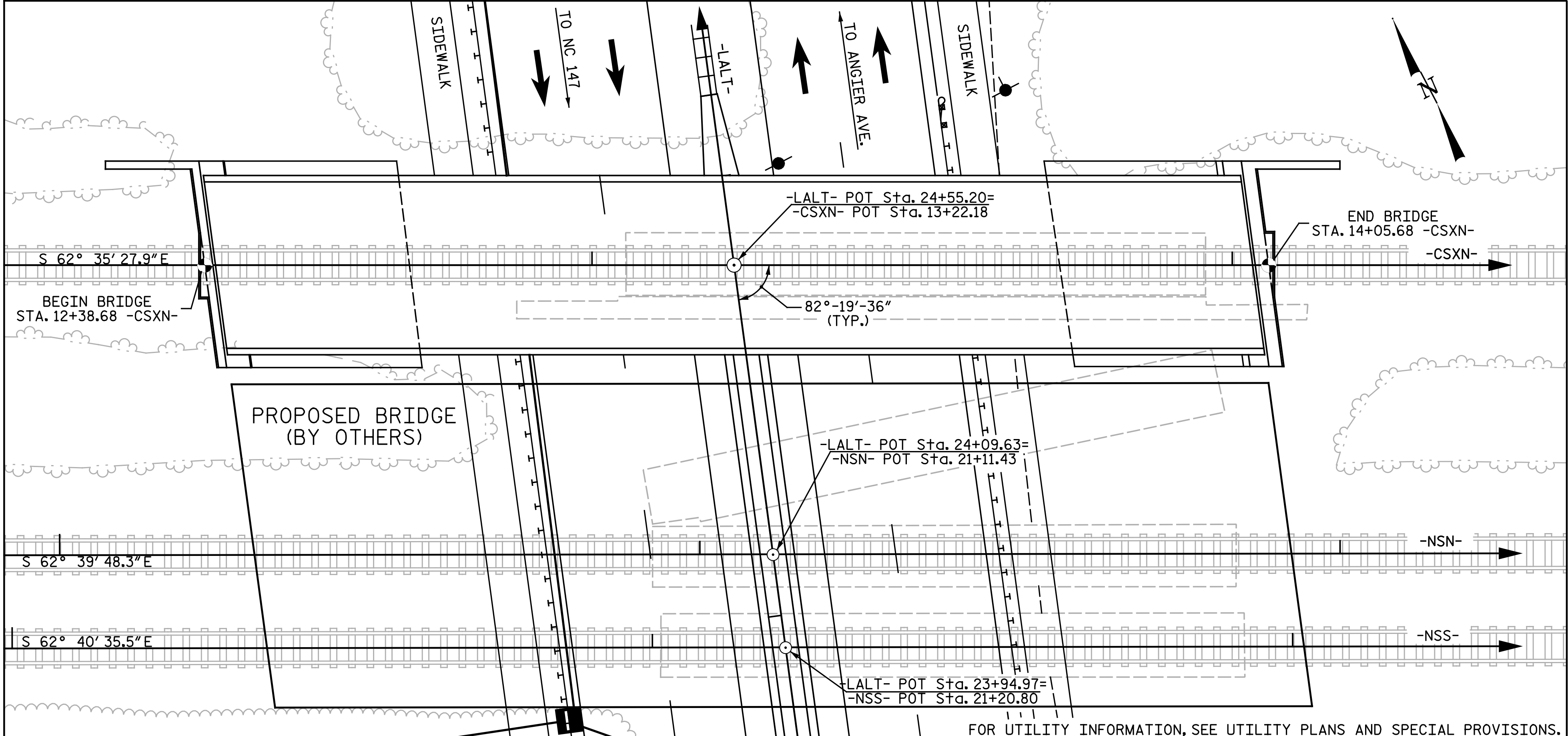


B.M. 503 : R.R SPIKE IN 15" PIN OAK STA. 18+79.99 -NSN- OFFSET 45.9 FT. RIGHT EL. 414.78



LOCATION SKETCH

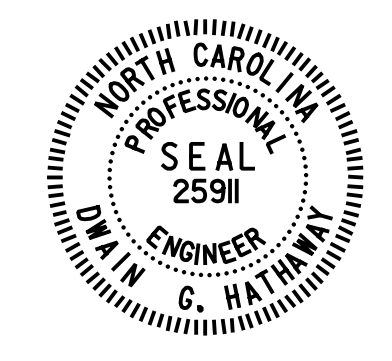
TOTAL BILL OF MATERIAL

	REMOVAL OF EXISTING STRUCTURE AT STA. 13+22.18 -CSXN-	4'-0" DIA. DRILLED PIERS IN SOIL (LFD)	4'-0" DIA. DRILLED PIERS NOT IN SOIL (LFD)	5'-6" DIA. DRILLED PIERS IN SOIL (LFD)	5'-6" DIA. DRILLED PIERS NOT IN SOIL (LFD)	STD INSPECTIONS (LFD)	SPT TESTING (LFD)	CSL TESTING (LFD)	UNCLASSIFIED STRUCTURE EXCAVATION AT STA. 13+22.18 -CSXN-	REINFORCED CONCRETE DECK SLAB	CLASS AA CONCRETE AS MODIFIED BY RAILROAD	REINFORCING STEEL	EPOXY COATED REINFORCING STEEL	SPIRAL COLUMN REINFORCING STEEL	EPOXY COATED SPIRAL COLUMN REINFORCING STEEL	APPROX. 564,994 LBS. STRUCTURAL STEEL
	LUMP SUM	LIN. FT.	LIN. FT.	LIN. FT.	LIN. FT.	EA.	EA.	EA.	LUMP SUM	SQ. FT.	CU. YDS.	LBS.	LBS.	LBS.	LBS.	LUMP SUM
SUPERSTRUCTURE										4,601						
ABUTMENT 1		59.5	30.0				4	4			45.7	30,400		4,032		
PIER 1				7	35			3			57.1	5,088	16,449		3,909	
PIER 2				24	36			3			57.4	5,088	18,776		5,010	
PIER 3				45	26		3	3			57.2	5,088	20,147		5,665	
ABUTMENT 2											48.7	9,924				
TOTAL	LUMP SUM	59.5	30.0	76	97	13	7	13	LUMP SUM	4,601	266.1	55,588	55,372	4,032	14,584	LUMP SUM

TOTAL BILL OF MATERIAL

	PAINTING FOR STRUCTURAL STEEL	WATER-PROOFING (RAILROAD STRUCTURES)	DAMP-PROOFING (RAILROAD STRUCTURES)	HP 12x53 STEEL PILES (LFD)	METHOD A WATERPROOFING	METAL HANDRAIL	1'-0" CONCRETE PARAPET	4" SLOPE PROTECTION	SELF-LUBRICATING EXPANSION BEARING ASSEMBLIES	STRUCTURE DRAINAGE SYSTEM AT STA. 13+22.18 -CSXN-	CONSTRUCTION, MAINTENANCE AND REMOVAL OF TEMPORARY SPAN	ASBESTOS ASSESSMENT
	LUMP SUM	SQ. YDS.	SQ. YDS.	NO. LIN. FT.	SQ. YDS.	LIN. FT.	LIN. FT.	SQ. YDS.	LUMP SUM	LUMP SUM	LUMP SUM	LUMP SUM
SUPERSTRUCTURE		478				330.0	328.3					
ABUTMENT 1			52.7		10.3	20.1		145				
PIER 1			5.2		11.0							
PIER 2			5.2		11.0							
PIER 3			5.2		11.0							
ABUTMENT 2			52.1	18	540	19.7		143				
TOTAL	LUMP SUM	478	120.4	18	540	369.8	328.3	288	LUMP SUM	LUMP SUM	LUMP SUM	LUMP SUM

PROJECT NO. U-3308
 DURHAM COUNTY
 STATION: 24+55.20 -LALT-
 13+22.18 -CSXN-
 SHEET 5 OF 5



Designed by
 Dwan Hatfield
 5/3/2016

Michael Baker INTERNATIONAL

Michael Baker Engineering
 8000 Regency Parkway, Suite 600
 Cary, North Carolina 27618
 NC License No.: F-1084

STATE OF NORTH CAROLINA
 DEPARTMENT OF TRANSPORTATION
 RALEIGH
 GENERAL DRAWING
 FOR BRIDGE ON CSXT RAILWAY
 OVER ALSTON AVE. BETWEEN
 NC 147 AND ANGIER AVE.

REVISIONS						SHEET NO.
NO.	BY:	DATE:	NO.	BY:	DATE:	S4-5
1			3			TOTAL SHEETS 68
2			4			

cmayhew 5/3/2016 9:36:58 AM
 File Name: Y:\Projects\NCDOT\U-3308\Structures\Drawings\Final\404_005_U3308_SMU_6D05.dgn

DRAWN BY : J. N. A. / M. D. M. DATE : 12-31-13
 CHECKED BY : S. A. DENNEY DATE : 2-24-14