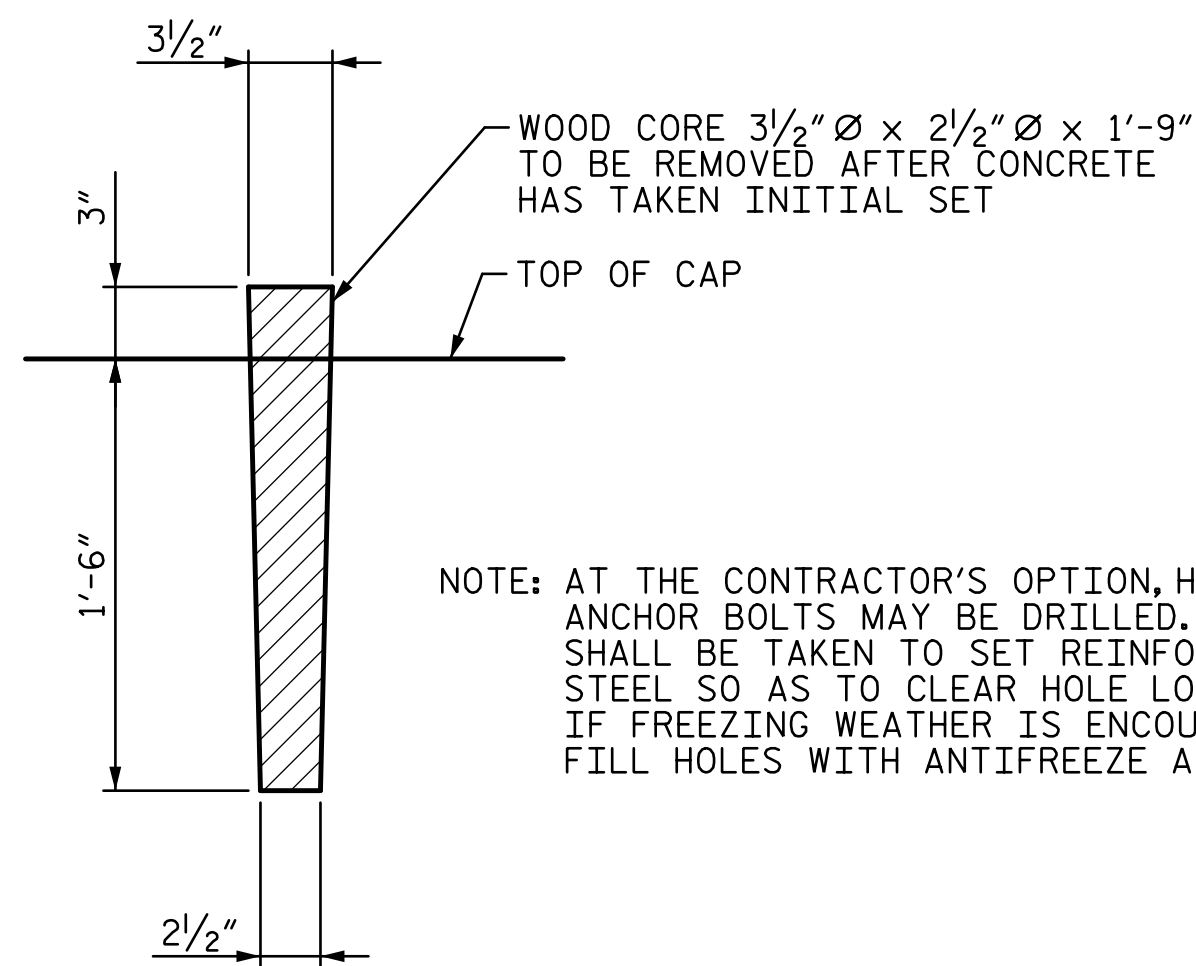


### REINFORCING BAR SCHEDULE

PIER 1						PIER 2						PIER 3								
MARK	NO.	SIZE	TYPE	LENGTH (FT. IN.)	WEIGHT (LBS.)	MARK	NO.	SIZE	TYPE	LENGTH (FT. IN.)	WEIGHT (LBS.)	MARK	NO.	SIZE	TYPE	LENGTH (FT. IN.)	WEIGHT (LBS.)			
B1	16	#9	STR.	51'-6"	2,802	B1	16	#9	STR.	51'-6"	2,802	B1	16	#9	STR.	51'-6"	2,802			
B2	8	#9	①	54'-0"	1,469	B2	8	#9	①	54'-0"	1,469	B2	8	#9	①	54'-0"	1,469			
B3	6	#5	STR.	51'-6"	322	B3	6	#5	STR.	51'-6"	322	B3	6	#5	STR.	51'-6"	322			
M1	32	#11	STR.	20'-6"	3,485	M1	32	#11	STR.	25'-6"	4,335	M1	32	#11	STR.	28'-6"	4,845			
M2	48	#11	STR.	23'-6"	5,993	M2	48	#11	STR.	36'-6"	9,308	M2	48	#11	STR.	28'-6"	7,268			
S1	64	#5	②	13'-6"	901	S1	64	#5	②	13'-6"	901	S1	64	#5	②	13'-6"	901			
S2	20	#5	③	14'-11"	311	S2	20	#5	③	14'-11"	311	S2	20	#5	③	14'-11"	311			
U1	22	5	⑤	7'-6"	172	U1	22	5	⑤	7'-6"	172	U1	22	5	⑤	7'-6"	172			
V1	80	11	④	16'-6"	7,013	V1	80	11	④	16'-6"	7,013	V1	80	11	④	16'-6"	7,013			
SP1	2	*	⑦	516'-10"	1,078	SP1	2	*	⑦	744'-0"	1,552	SP1	2	*	⑦	880'-4"	1,836			
SP2	3	*	⑦	653'-2"	2,044	SP2	3	*	⑦	1,243'-9"	3,892	SP2	3	*	⑦	880'-4"	2,755			
SP3	5	*	⑥	569'-10"	2,972	SP3	5	*	⑥	564'-2"	2,942	SP3	5	*	⑥	556'-7"	2,903			
REINFORCING STEEL					LBS.	22,468	REINFORCING STEEL					LBS.	26,633	REINFORCING STEEL					LBS.	25,103
SPIRAL REINFORCING STEEL					LBS.	6,094	SPIRAL REINFORCING STEEL					LBS.	8,386	SPIRAL REINFORCING STEEL					LBS.	7,494

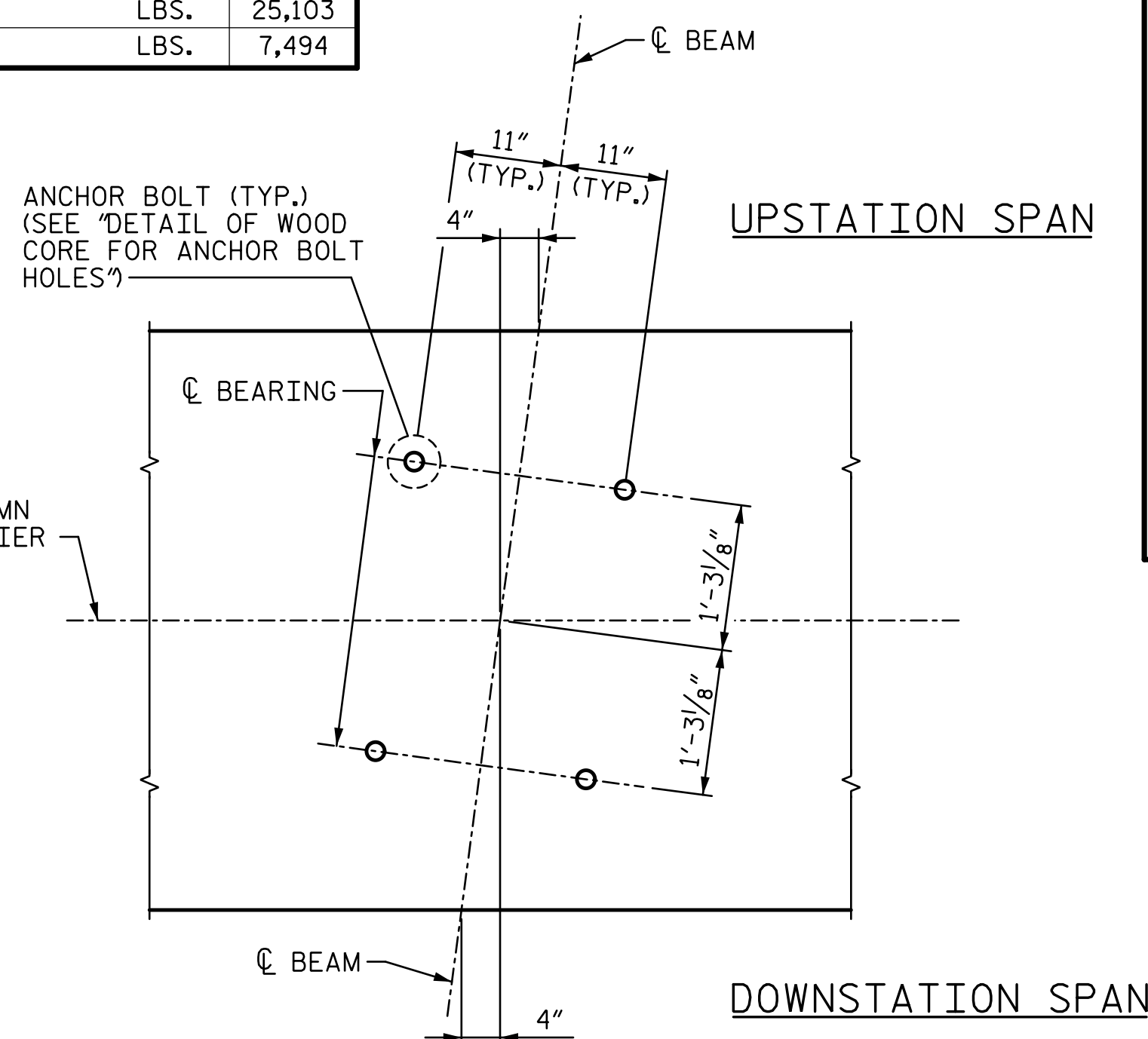
THE CONTRACTOR'S ATTENTION IS CALLED TO THE FACT THAT THE LONGITUDINAL REINFORCEMENT FOR DRILLED PIERS IS DETAILED WITH 3 FEET OF EXTRA LENGTH.

\* THE SPIRAL REINFORCING SHALL BE #5 PLAIN OR DEFORMED BAR WITH A 3" PITCH.

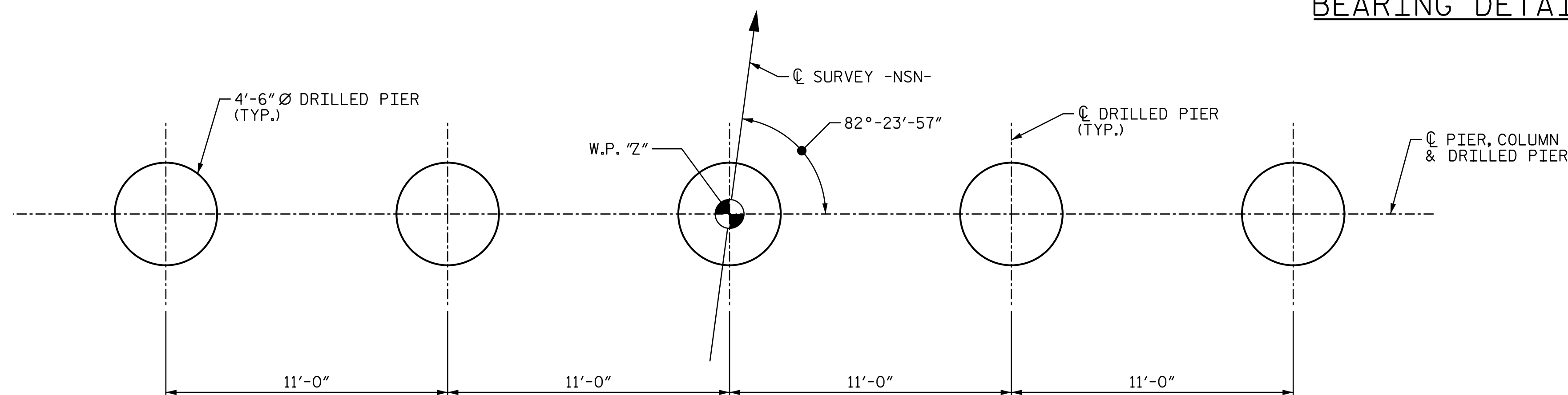


DETAIL OF WOOD CORE FOR ANCHOR BOLT HOLES

NOTE: AT THE CONTRACTOR'S OPTION, HOLE FOR ANCHOR BOLTS MAY BE DRILLED. CARE SHALL BE TAKEN TO SET REINFORCING STEEL SO AS TO CLEAR HOLE LOCATION. IF FREEZING WEATHER IS ENCOUNTERED, FILL HOLES WITH ANTIFREEZE AND SAWDUST.

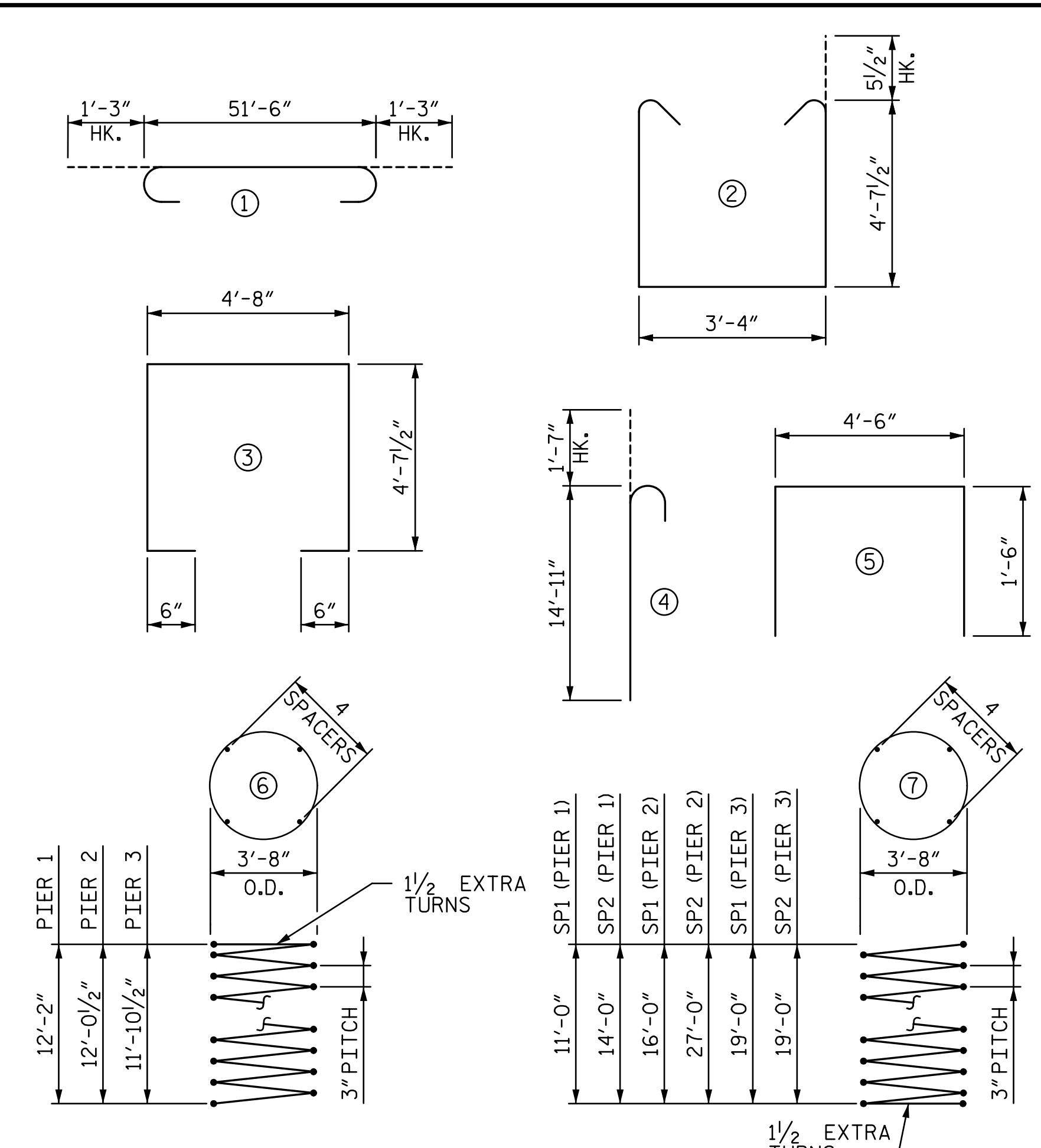


BEARING DETAIL



PLAN OF DRILLED PIERS

### BAR TYPES



ALL BAR DIMENSIONS ARE OUT TO OUT.

### QUANTITIES

	PIER 1	PIER 2	PIER 3
REINFORCING STEEL	LBS. 22,468	26,633	25,103
SPIRAL REINFORCING STEEL	LBS. 6,094	8,386	7,494
C.I.P. CONCRETE :			
POUR 2 - COLUMNS	CU. YDS. 27.7	27.4	27.1
POUR 3 - CAP	CU. YDS. 48.1	48.1	48.1
TOTAL	CU. YDS. 75.8	75.5	75.2
4'-6" Ø DRILLED PIERS IN SOIL	L.F. 18.5	70.5	57.5
4'-6" Ø DRILLED PIERS NOT IN SOIL	L.F. 48.0	45.0	40.0
TOTAL 4'-6" Ø DRILLED PIERS	L.F. 66.5	115.5	97.5
DRILLED PIER CONCRETE : POUR 1	CU. YDS. 39.2	68.0	57.4
CSL TUBES	L.F. 370.0	615.0	525.0
SPT TESTING	EA. ---	5	---

PROJECT NO. U-3308  
 DURHAM COUNTY  
 STATION: POT 24+09.63 -LALT-  
POT 21+11.43 -NSN-

SHEET 3 OF 3

STATE OF NORTH CAROLINA  
 DEPARTMENT OF TRANSPORTATION  
 RALEIGH

PIER 1, 2, & 3



3/31/2015

### REVISIONS

NO.	BY:	DATE:	NO.	BY:	DATE:
1			3		
2			4		

SHEET NO.  
 S3-33  
 TOTAL SHEETS  
 44

DOCUMENT NOT CONSIDERED FINAL  
 UNLESS ALL SIGNATURES COMPLETED

STV / Ralph Whitehead Associates, Inc.  
 900 W Trade Street, Suite 715  
 Charlotte, NC 28202  
 NC License No. F-0991

i:\PROJ\251325\ustation\struc\final\403\_033\_U3308\_SML\_P12303.dgn 3/30/2015 4:42:11 PM olveyac

DRAWN BY : VMW DATE : 06-14  
 CHECKED BY : DJM DATE : 06-14