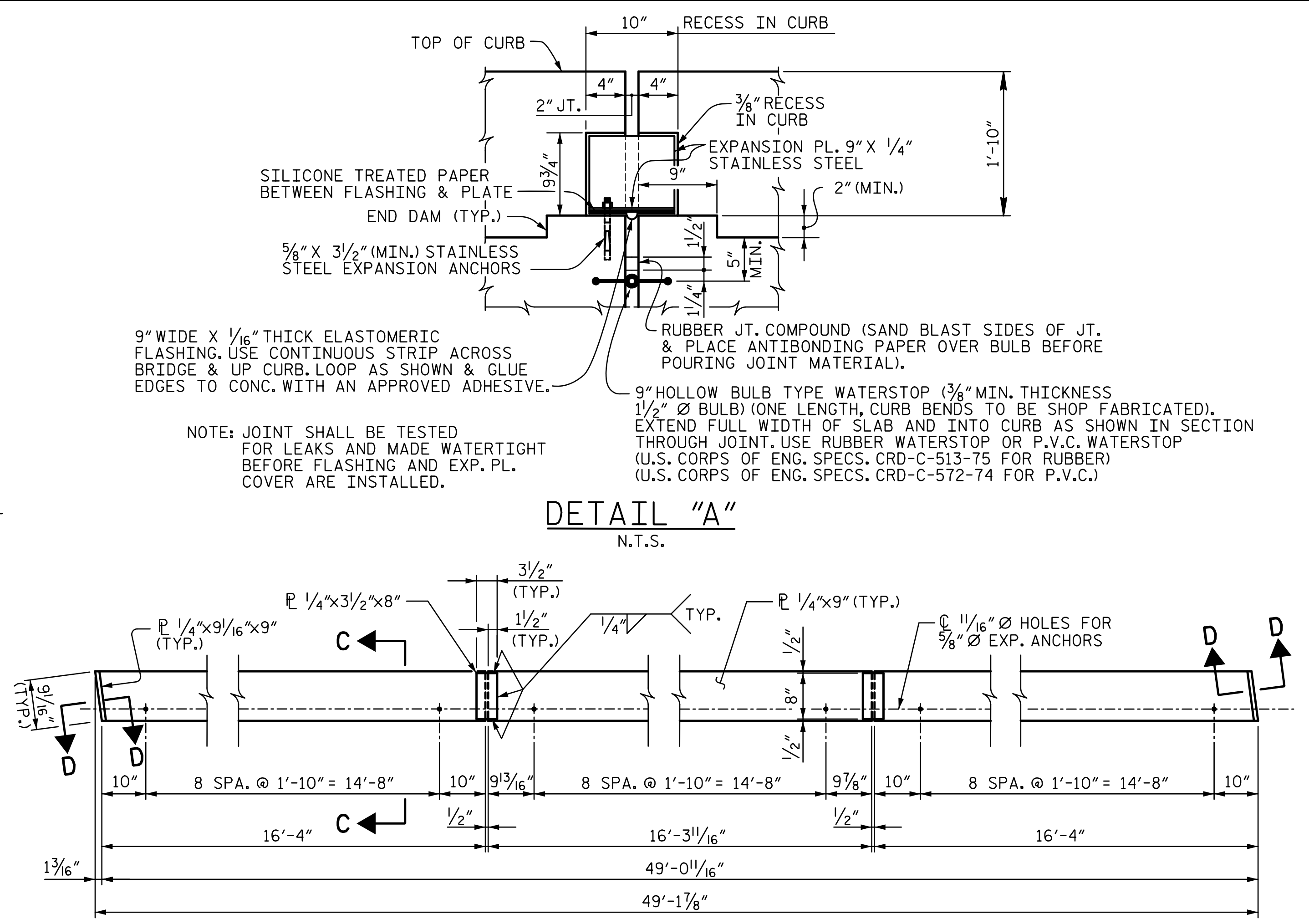


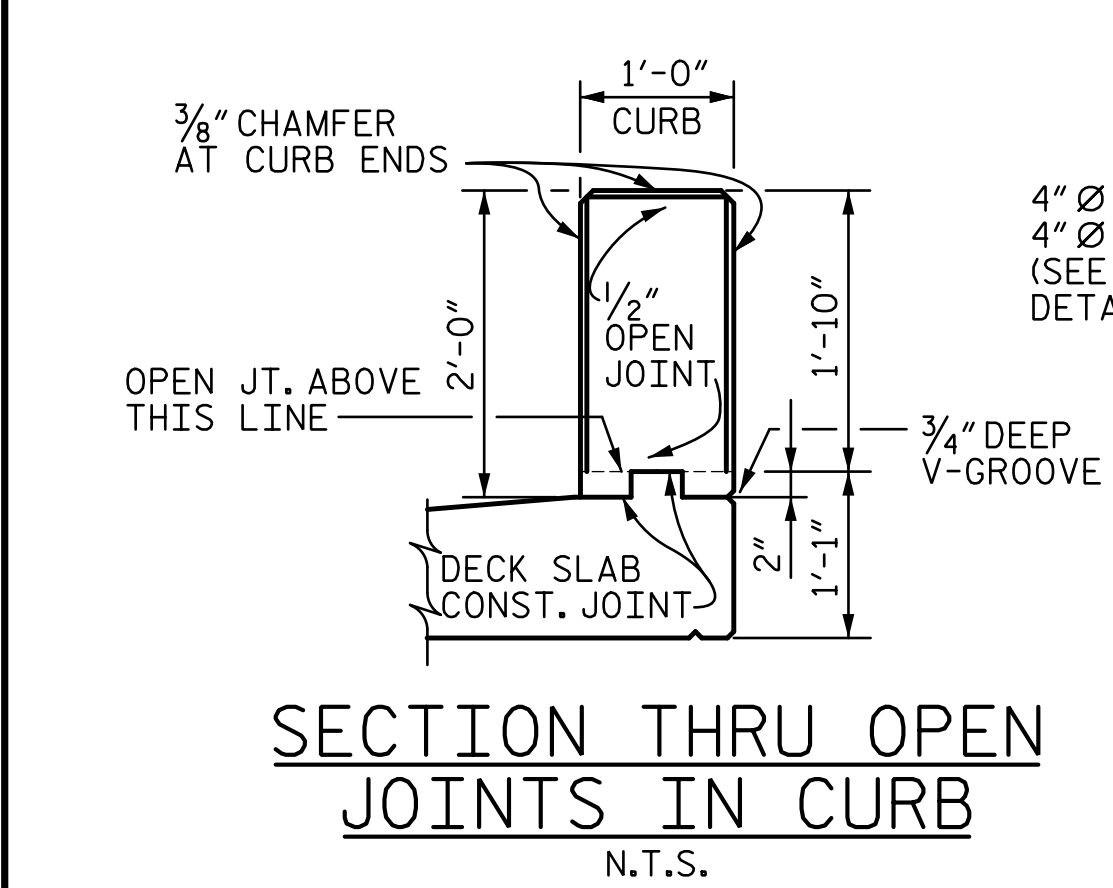
SECTION A-A
N.T.S.

SECTION B-B
N.T.S.
(PIER 2 AND 3 SHOWN, PIER 1 SIMILAR)

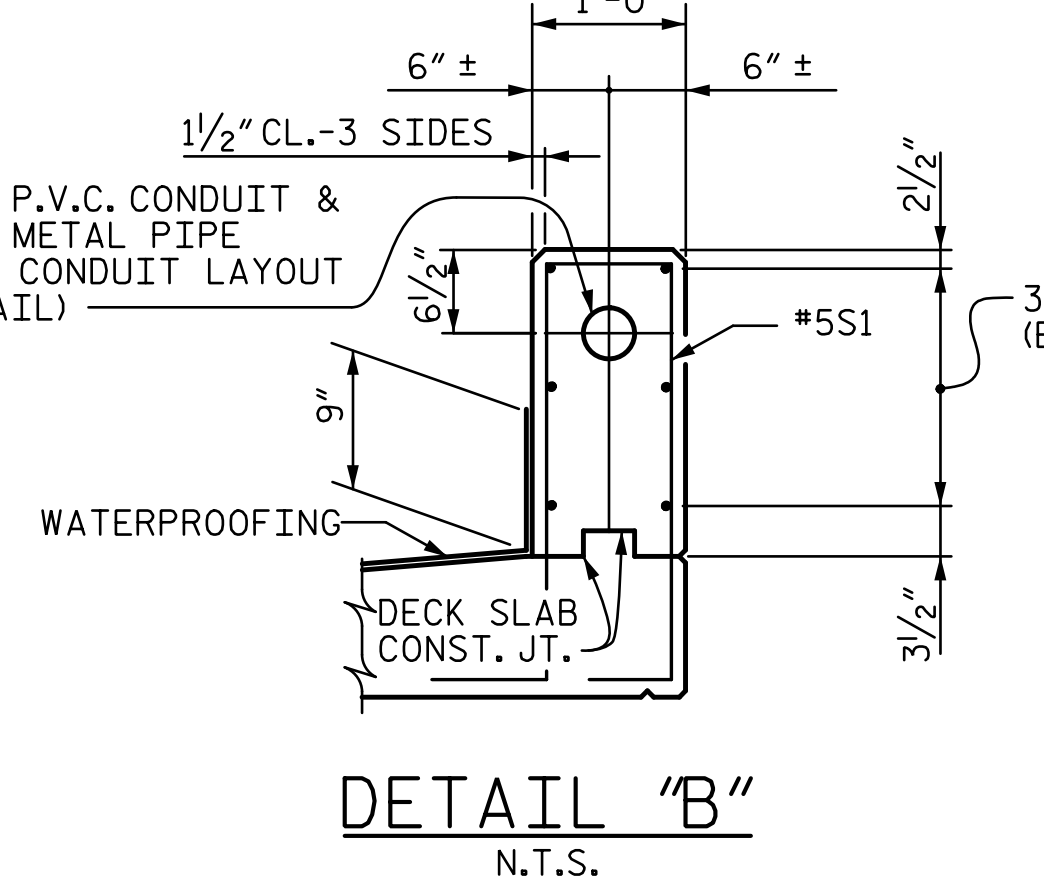


DETAIL "A"
N.T.S.

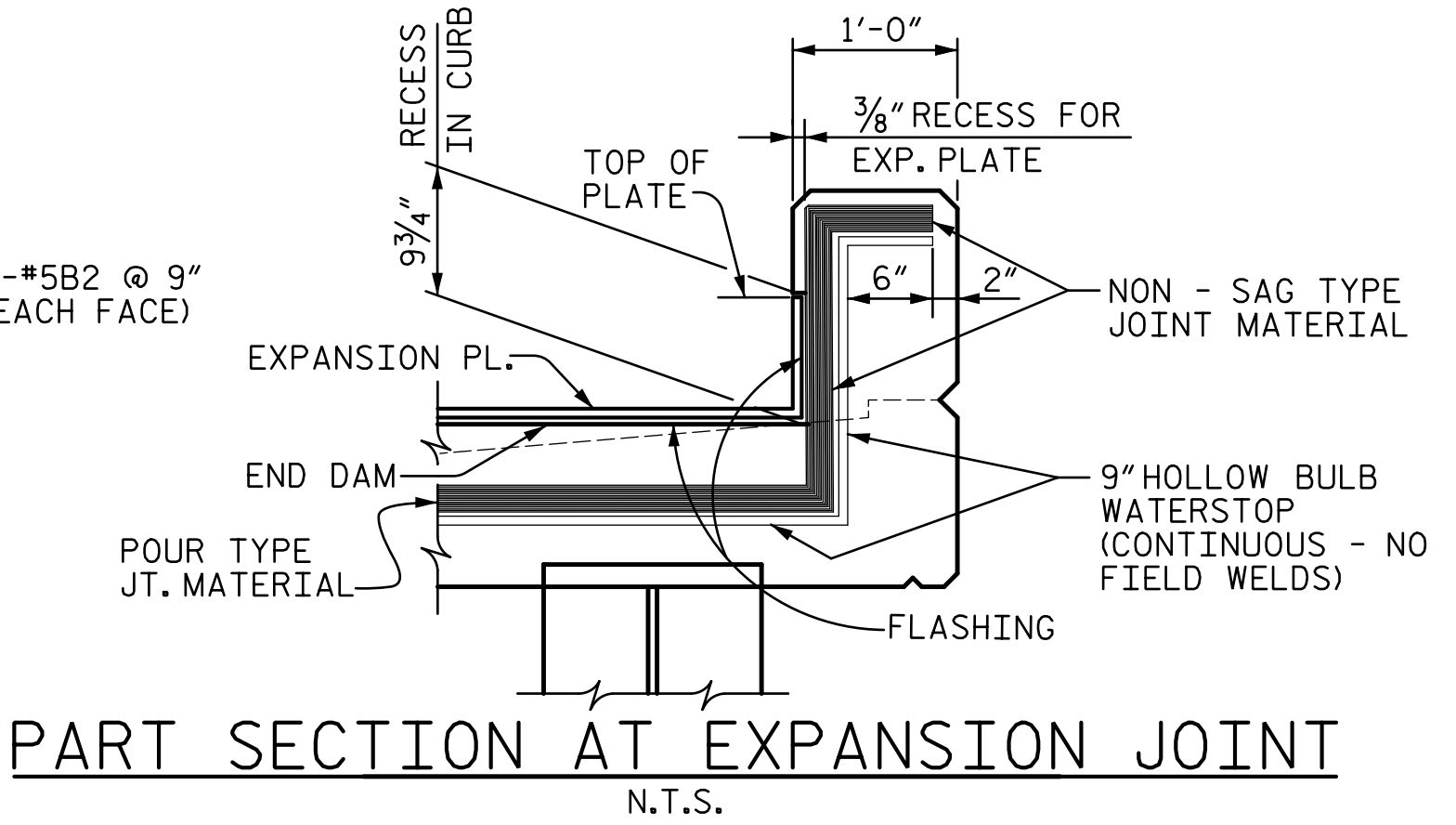
EXPANSION PLATE ASSEMBLY



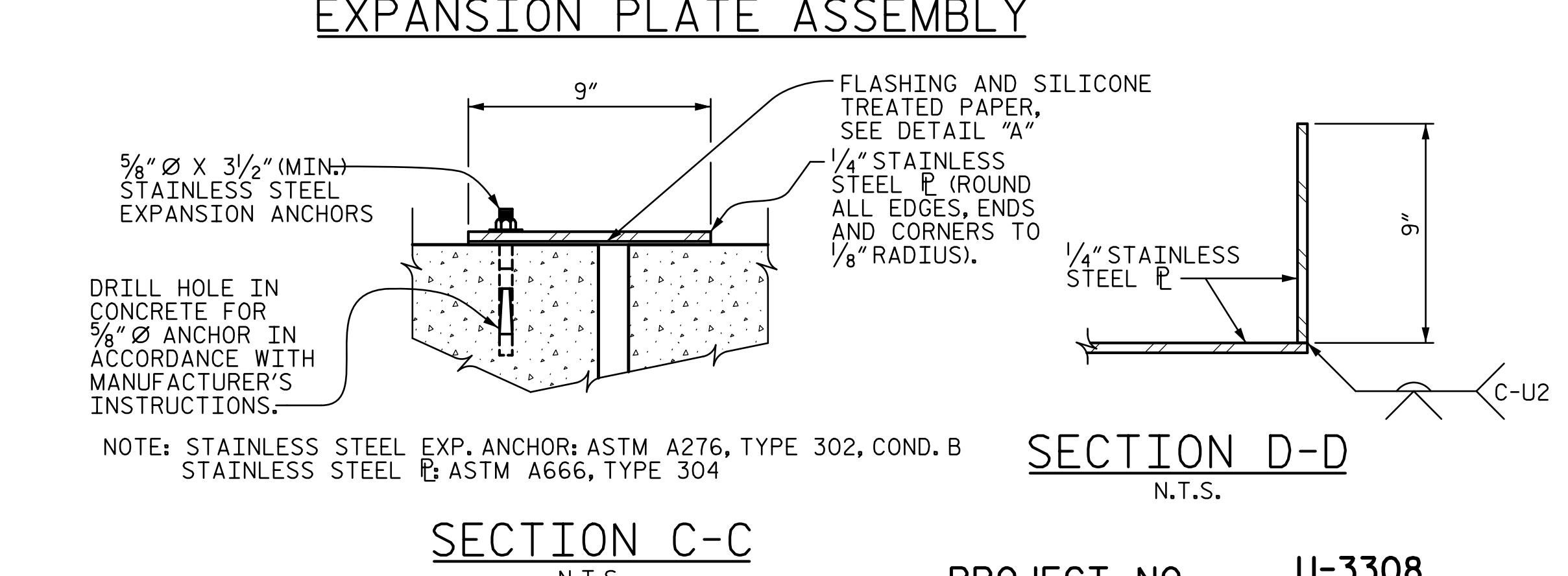
SECTION THRU OPEN JOINTS IN CURB
N.T.S.



DETAIL "B"
N.T.S.

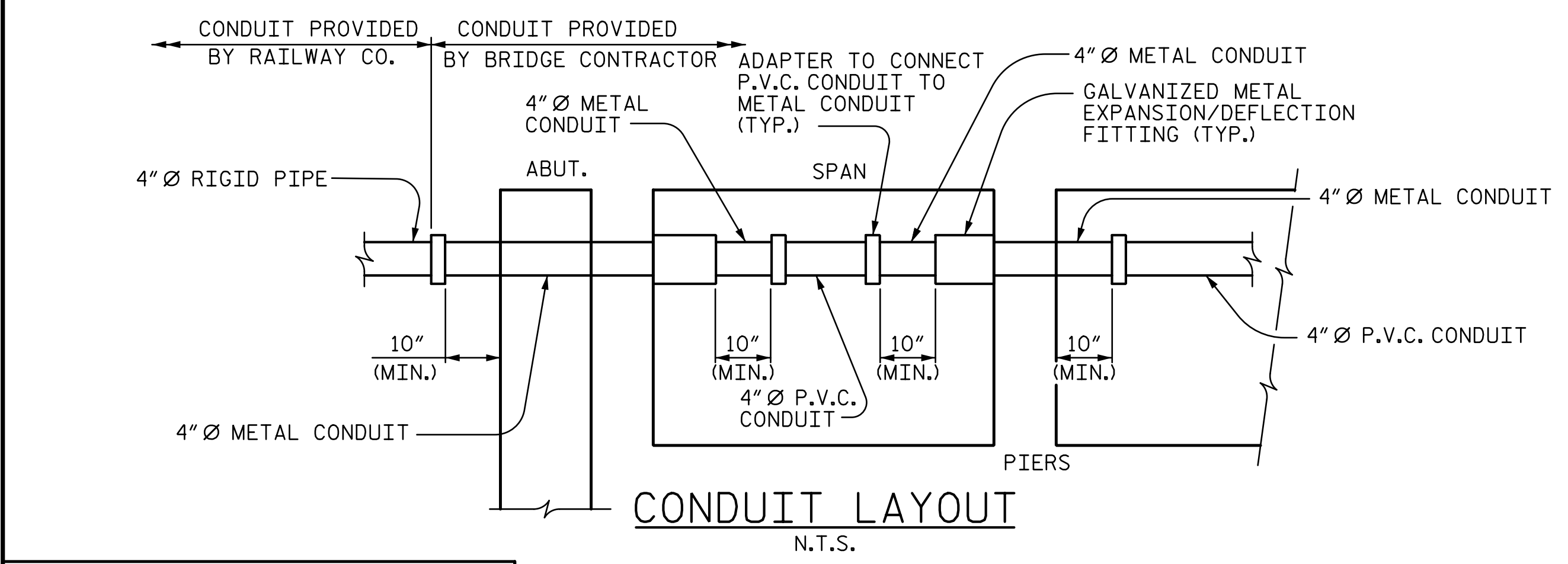


PART SECTION AT EXPANSION JOINT
N.T.S.



SECTION C-C
N.T.S.

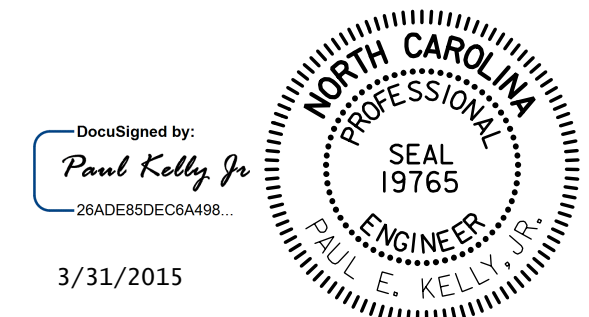
SECTION D-D
N.T.S.



CONDUIT LAYOUT
N.T.S.

- NOTES FOR CONDUIT:**
- CONDUIT TO BE 4" Ø P.V.C. CONDUIT IN ACCORDANCE WITH UNDERWRITER'S LABORATORY SPECIFICATIONS.
 - PROVISIONS SHALL BE MADE FOR EXPANSION BETWEEN DECK SLABS AT EXPANSION JOINTS AT BENTS. (METAL EXPANSION/DEFLECTION FITTINGS).
 - COUPLING SHALL BE PROVIDED BEHIND BACKWALL OF ABUTMENTS FOR CONNECTION TO 4" Ø RIGID PIPE.
 - FOR CONDUIT IN PARAPETS, SEE SPECIAL PROVISIONS.

- NOTES:**
- FOR WATERPROOFING AT EXPANSION JOINTS, SEE "WATERPROOFING" SPECIAL PROVISION.
 - THE COST OF EXPANSION JOINT ASSEMBLY, STAINLESS STEEL EXPANSION ANCHORS, SILICONE TREATED PAPER AND ALL LABOR, MATERIALS AND INCIDENTALS REQUIRED FOR INSTALLATION SHALL BE INCLUDED IN THE UNIT CONTRACT PRICE BID FOR "REINFORCED CONCRETE DECK SLAB".



PROJECT NO. U-3308
 DURHAM COUNTY
 STATION: POT 24+09.63 -LALT-
POT 21+11.43 -NSN-

STATE OF NORTH CAROLINA DEPARTMENT OF TRANSPORTATION RALEIGH					
DECK JOINT DETAILS					
REVISIONS					SHEET NO.
NO.	BY:	DATE:	NO.	BY:	DATE:
1			3		
2			4		
					TOTAL SHEETS 44

DRAWN BY: JAB DATE: 06-14
 CHECKED BY: DJM DATE: 06-14

DOCUMENT NOT CONSIDERED FINAL
 UNLESS ALL SIGNATURES COMPLETED

STV / Ralph Whitehead Associates, Inc.
 900 W Trade Street, Suite 715
 Charlotte, NC 28202
 NC License No. F-0991

I:\PROJ\2513251\ustation\struct\final\403_009_U3308_SMLDJD01.dgn
 3/30/2015 4:40:12 PM
 olveyac