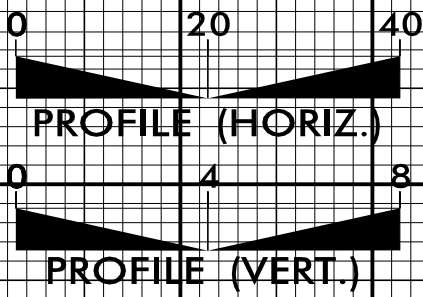
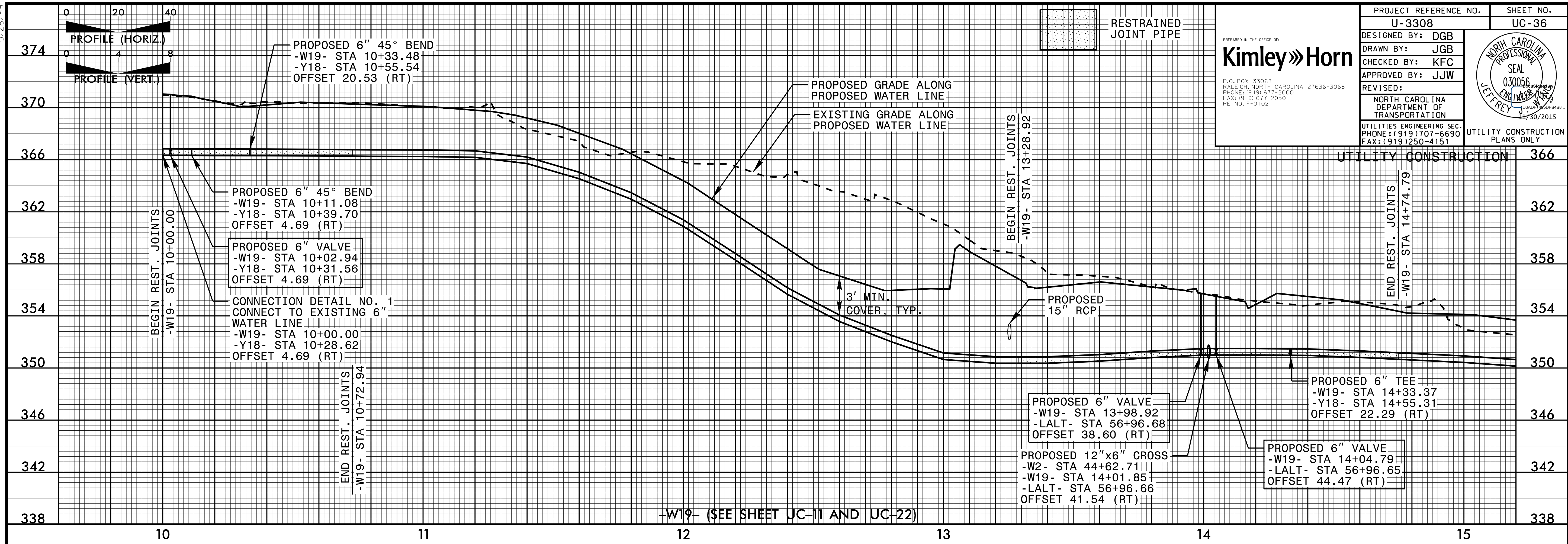


5/28/99



RESTRAINED JOINT PIPE

PROJECT REFERENCE NO. U-3308 SHEET NO. UC-36

DESIGNED BY: DGB
DRAWN BY: JGB
CHECKED BY: KFC
APPROVED BY: JJW

REVISIONS:

NORTH CAROLINA DEPARTMENT OF TRANSPORTATION

UTILITIES ENGINEERING SEC. PHONE: (919) 707-6690 FAX: (919) 250-4151

UTILITY CONSTRUCTION PLANS ONLY

Kimley»Horn

P.O. BOX 33068 RALEIGH, NORTH CAROLINA 27636-3068
PHONE: (919) 677-2000
FAX: (919) 677-2050
PE NO. P-0102

030056

JEFFREY J. HORN, P.E.

11/30/2015

PROPOSED 6" 45° BEND
-W19- STA 10+33.48
-Y18- STA 10+55.54
OFFSET 20.53 (RT)

PROPOSED 6" 45° BEND
-W19- STA 10+11.08
-Y18- STA 10+39.70
OFFSET 4.69 (RT)

PROPOSED 6" VALVE
-W19- STA 10+02.94
-Y18- STA 10+31.56
OFFSET 4.69 (RT)

CONNECTION DETAIL NO. 1
CONNECT TO EXISTING 6" WATER LINE
-W19- STA 10+00.00
-Y18- STA 10+28.62
OFFSET 4.69 (RT)

BEGIN REST. JOINTS
-W19- STA 10+00.00

END REST. JOINTS
-W19- STA 10+72.94

PROPOSED GRADE ALONG PROPOSED WATER LINE

EXISTING GRADE ALONG PROPOSED WATER LINE

BEGIN REST. JOINTS
-W19- STA 13+28.92

END REST. JOINTS
-W19- STA 14+74.79

3' MIN. COVER, TYP.

PROPOSED 15" RCP

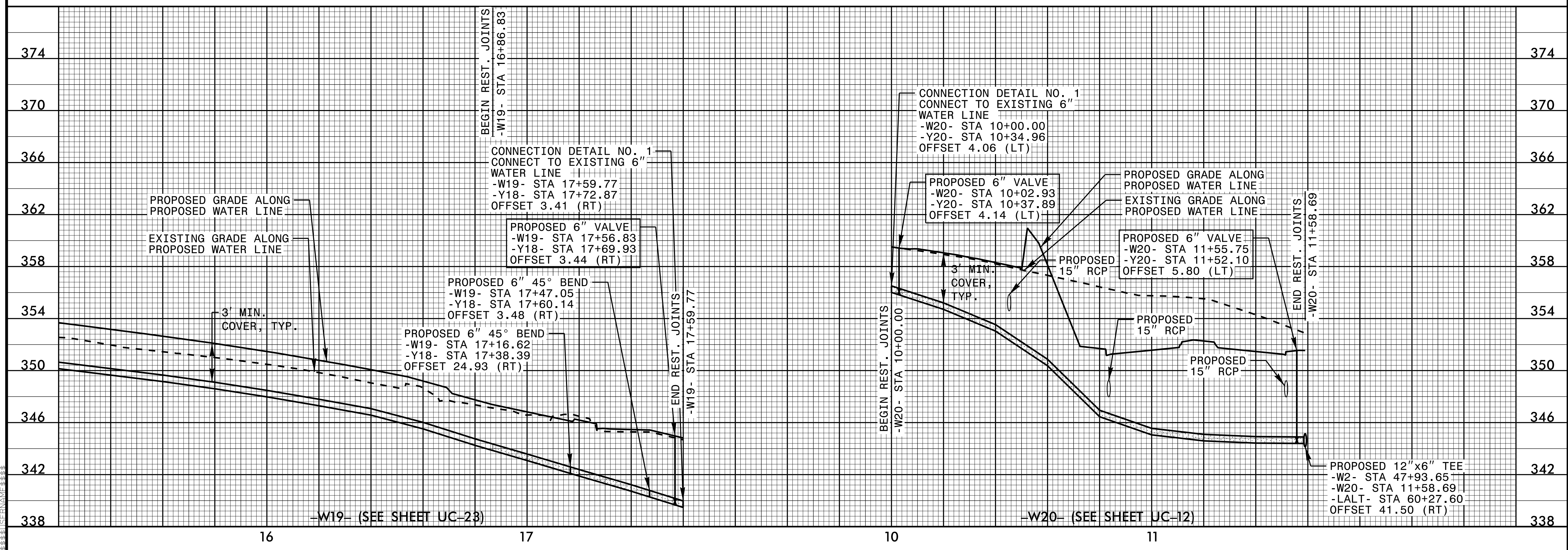
PROPOSED 6" VALVE
-W19- STA 13+98.92
-LALT- STA 56+96.68
OFFSET 38.60 (RT)

PROPOSED 12"x6" CROSS
-W2- STA 44+62.71
-W19- STA 14+01.85
-LALT- STA 56+96.66
OFFSET 41.54 (RT)

PROPOSED 6" TEE
-W19- STA 14+33.37
-Y18- STA 14+55.31
OFFSET 22.29 (RT)

PROPOSED 6" VALVE
-W19- STA 14+04.79
-LALT- STA 56+96.65
OFFSET 44.47 (RT)

-W19- (SEE SHEET UC-11 AND UC-22)



BEGIN REST. JOINTS
-W19- STA 16+86.83

CONNECTION DETAIL NO. 1
CONNECT TO EXISTING 6" WATER LINE
-W19- STA 17+59.77
-Y18- STA 17+72.87
OFFSET 3.41 (RT)

PROPOSED 6" VALVE
-W19- STA 17+56.83
-Y18- STA 17+69.93
OFFSET 3.44 (RT)

PROPOSED 6" 45° BEND
-W19- STA 17+47.05
-Y18- STA 17+60.14
OFFSET 3.48 (RT)

PROPOSED 6" 45° BEND
-W19- STA 17+16.62
-Y18- STA 17+38.39
OFFSET 24.93 (RT)

END REST. JOINTS
-W19- STA 17+59.77

PROPOSED GRADE ALONG PROPOSED WATER LINE

EXISTING GRADE ALONG PROPOSED WATER LINE

3' MIN. COVER, TYP.

CONNECTION DETAIL NO. 1
CONNECT TO EXISTING 6" WATER LINE
-W20- STA 10+00.00
-Y20- STA 10+34.96
OFFSET 4.06 (LT)

PROPOSED 6" VALVE
-W20- STA 10+02.93
-Y20- STA 10+37.89
OFFSET 4.14 (LT)

PROPOSED GRADE ALONG PROPOSED WATER LINE

EXISTING GRADE ALONG PROPOSED WATER LINE

PROPOSED 6" VALVE
-W20- STA 11+55.75
-Y20- STA 11+52.10
OFFSET 5.80 (LT)

3' MIN. COVER, TYP.

PROPOSED 15" RCP

PROPOSED 15" RCP

END REST. JOINTS
-W20- STA 11+58.69

PROPOSED 12"x6" TEE
-W2- STA 47+93.65
-W20- STA 11+58.69
-LALT- STA 60+27.60
OFFSET 41.50 (RT)

-W19- (SEE SHEET UC-23)

-W20- (SEE SHEET UC-12)

5/28/99