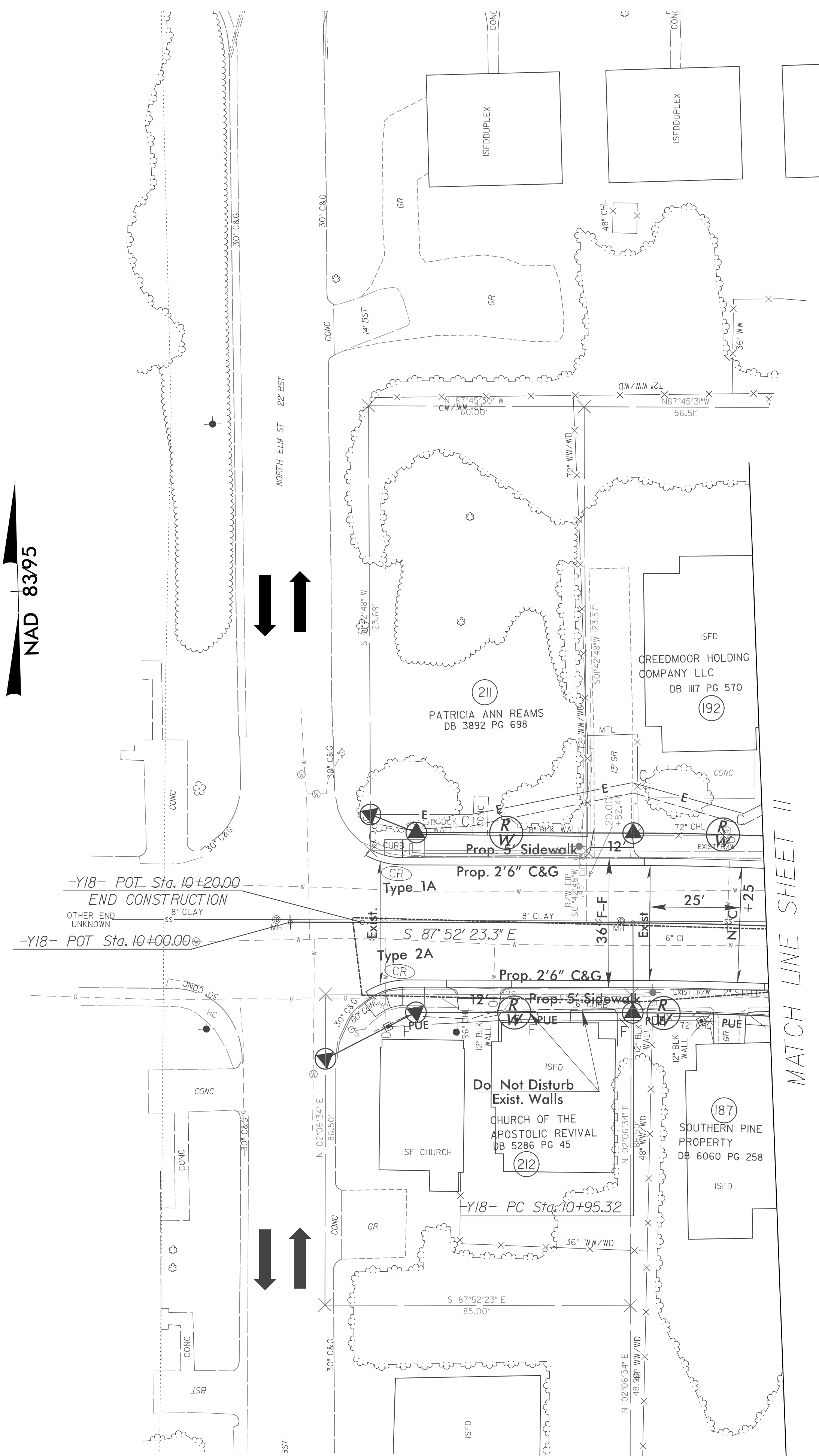


RW Revision 6/1/14 JCL
 Converted Temporary Construction Easement (TCE) to Permanent Utility Easement (PUE) on Parcels 187 and 212.

8/17/99
 4/13/2015
 R:\Projects\14\NECN\3308.r\dj\EC_ips22.dgn
 01/01/2015

PROJECT REFERENCE NO.	SHEET NO.
U-3308	EC-43/CONST-22
RW SHEET NO.	
ROADWAY DESIGN ENGINEER	HYDRAULICS ENGINEER



NOTE: UTILIZE SPECIAL STILLING BASIN AS STILLING BASIN WHERE APPLICABLE

NOTES: ANY DEVIATION FROM OPTIONS GIVEN WILL REQUIRE PRIOR APPROVAL BY ENGINEER.

ADDITIONAL EROSION CONTROL DEVICES MAY NEED TO BE INSTALLED AS DIRECTED BY THE ENGINEER.