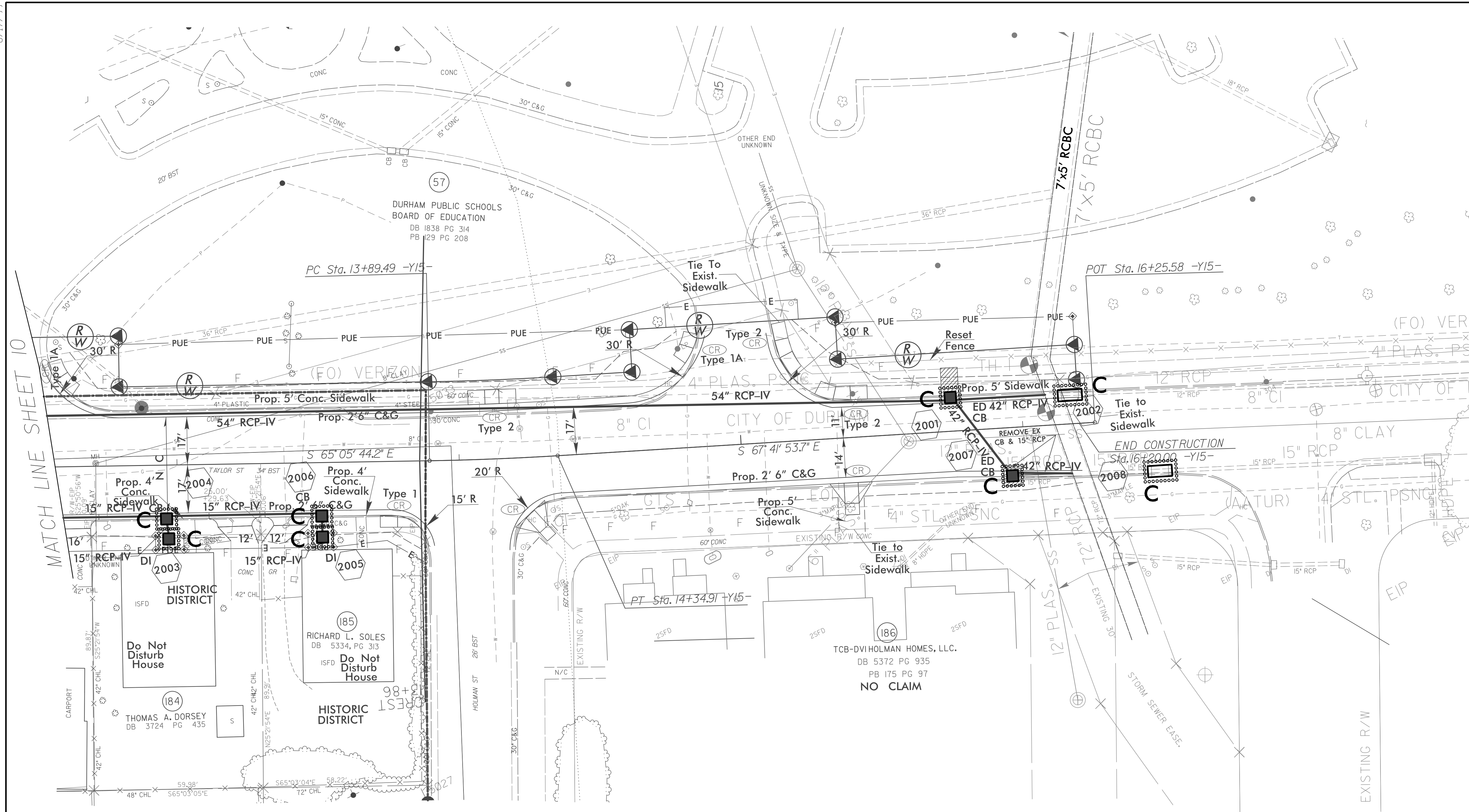
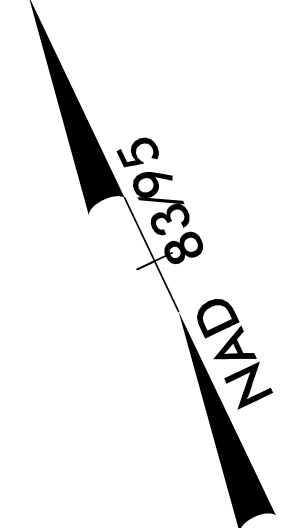


PROJECT REFERENCE NO.	SHEET NO.
U-3308	EC-41/CONST-20
RW SHEET NO.	
ROADWAY DESIGN ENGINEER	HYDRAULICS ENGINEER

8/17/99



RW Revision 12/09/13 JCL  
 Changed Property Owner Name and Deed Information on Parcel 185



INSTALL INLET PROTECTION IN ACCORDANCE WITH ENGINEER'S RECOMMENDATIONS

NOTE: UTILIZE SPECIAL STILLING BASIN AS STILLING BASIN WHERE APPLICABLE

NOTES: ANY DEVIATION FROM OPTIONS GIVEN WILL REQUIRE PRIOR APPROVAL BY ENGINEER.  
  
 ADDITIONAL EROSION CONTROL DEVICES MAY NEED TO BE INSTALLED AS DIRECTED BY THE ENGINEER.

4/13/2015  
 R:\Projects\13\EC\U3308\_r.dwg EC-ps20.dgn