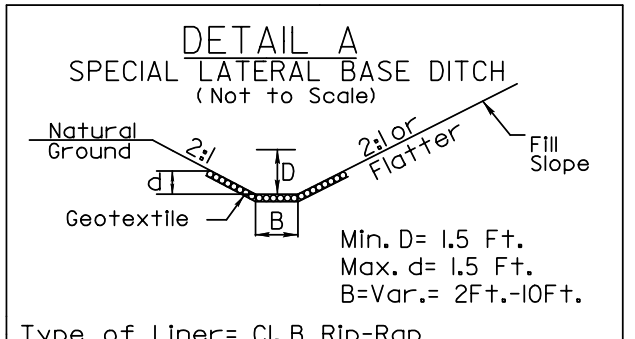
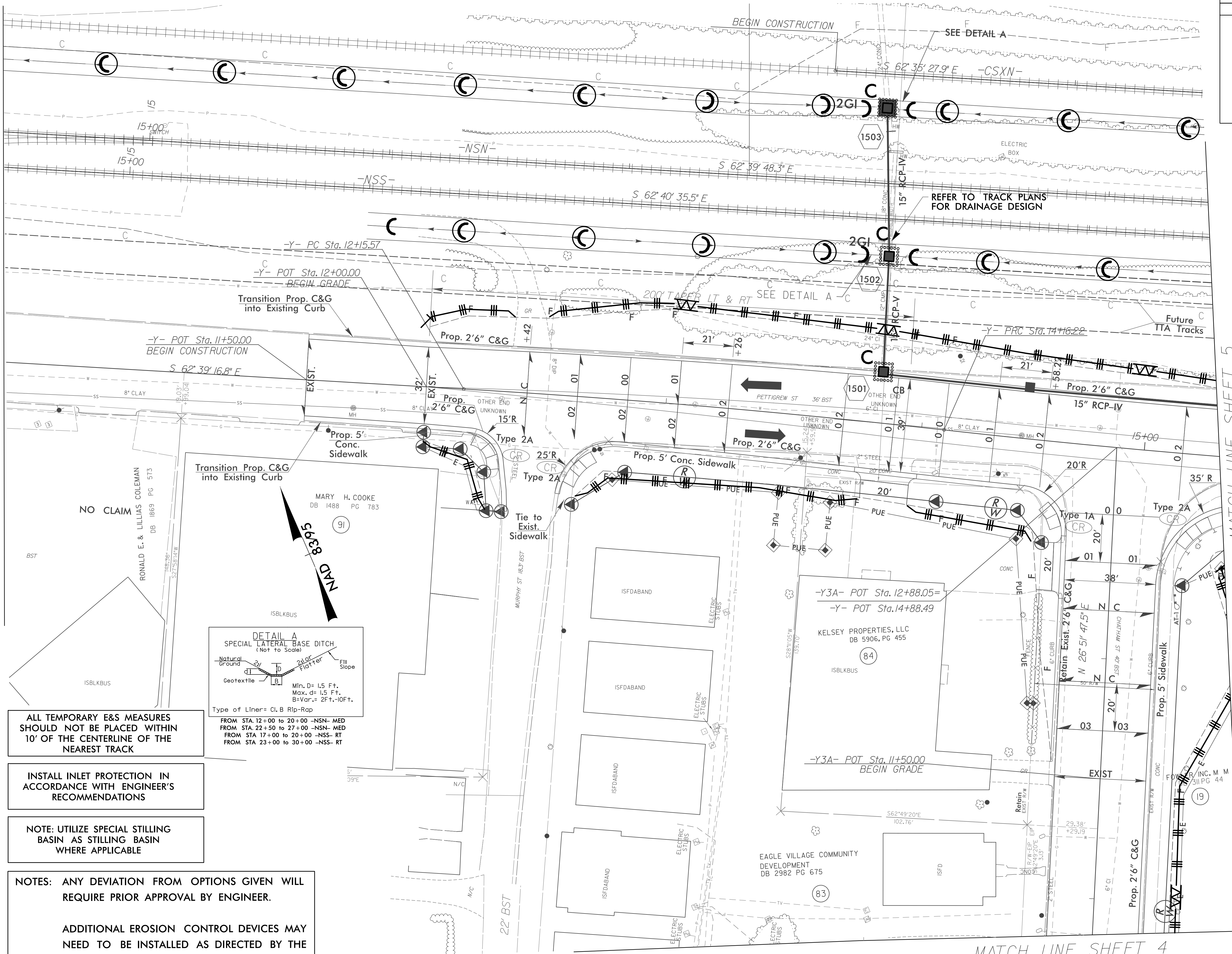


PROJECT REFERENCE NO.	SHEET NO.
U-3308	EC-36/CONST-15
RW SHEET NO.	
ROADWAY DESIGN ENGINEER	HYDRAULICS ENGINEER

R/W Revision 6/1/14 JCL  
 Converted Temporary Construction Easement (TCE) to Permanent Utility Easement (PUE) on Parcels 83 and 84.  
 Added new PUE to Parcels 19, 83 and 84

MATCH LINE SHEET 14

MATCH LINE SHEET 5



ALL TEMPORARY E&S MEASURES SHOULD NOT BE PLACED WITHIN 10' OF THE CENTERLINE OF THE NEAREST TRACK

INSTALL INLET PROTECTION IN ACCORDANCE WITH ENGINEER'S RECOMMENDATIONS

NOTE: UTILIZE SPECIAL STILLING BASIN AS STILLING BASIN WHERE APPLICABLE

NOTES: ANY DEVIATION FROM OPTIONS GIVEN WILL REQUIRE PRIOR APPROVAL BY ENGINEER.  
  
 ADDITIONAL EROSION CONTROL DEVICES MAY NEED TO BE INSTALLED AS DIRECTED BY THE ENGINEER.

MATCH LINE SHEET 4

8/17/99  
4/13/2015  
R:\Projects\U-3308\EC\U-3308-r.dwg EC-ps15.dgn