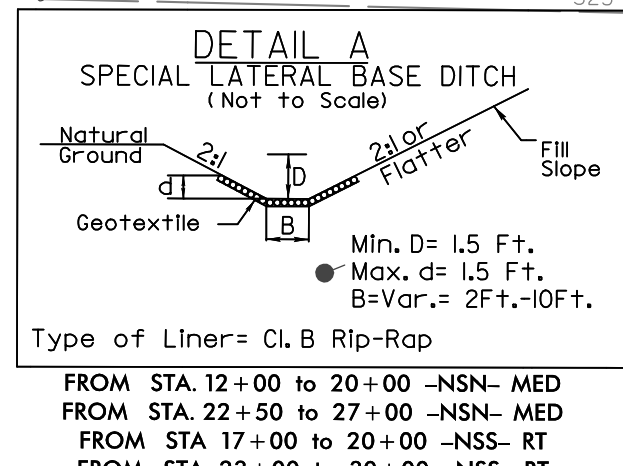
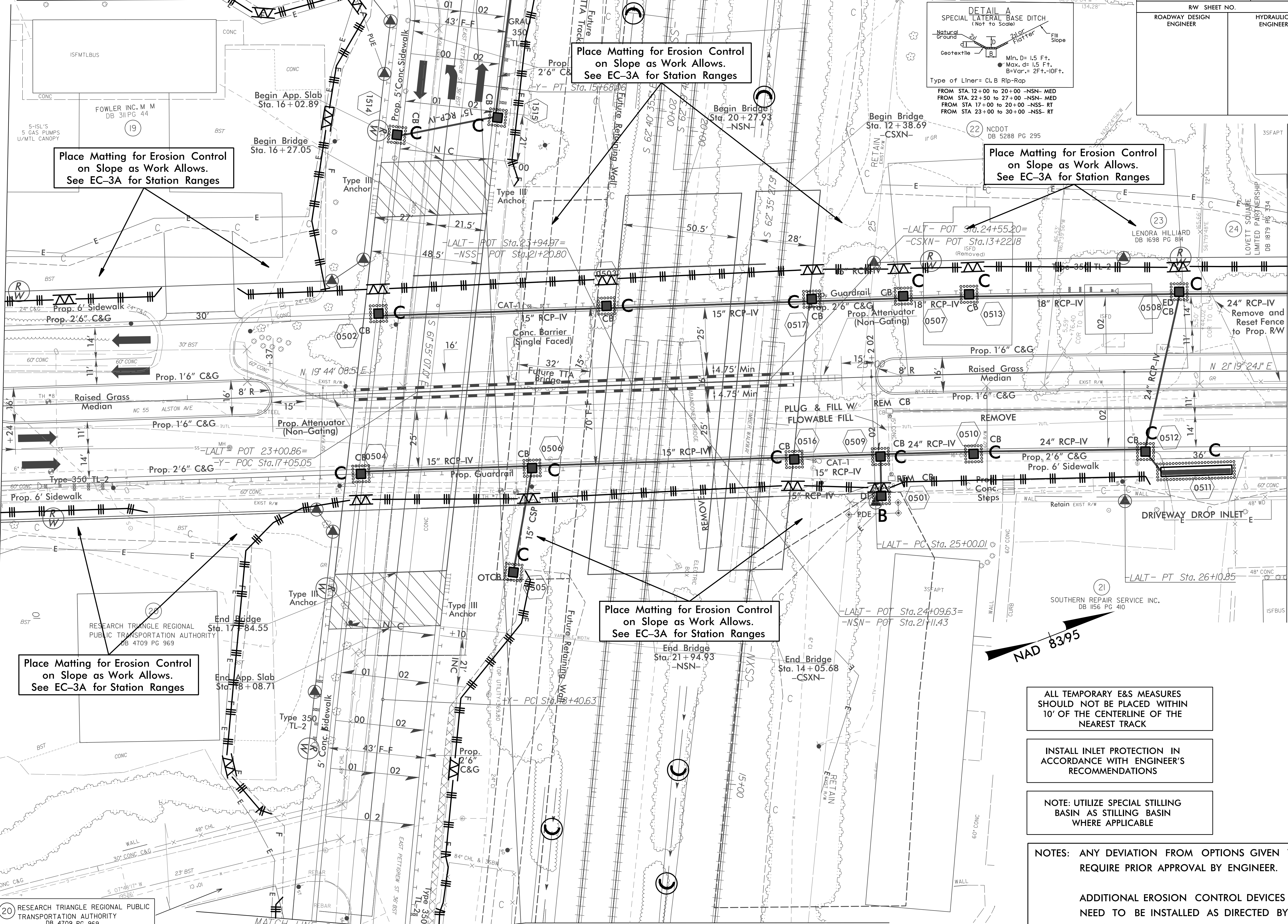


PROJECT REFERENCE NO. U-3308	SHEET NO. EC-26/CONST-5
ROADWAY DESIGN ENGINEER	HYDRAULICS ENGINEER

MATCH LINE SHEET 15

MATCH LINE SHEET 4 (STA. 21+19)

MATCH LINE SHEET 6 (STA. 26+82)



Place Matting for Erosion Control on Slope as Work Allows. See EC-3A for Station Ranges

Place Matting for Erosion Control on Slope as Work Allows. See EC-3A for Station Ranges

Place Matting for Erosion Control on Slope as Work Allows. See EC-3A for Station Ranges

Place Matting for Erosion Control on Slope as Work Allows. See EC-3A for Station Ranges

Place Matting for Erosion Control on Slope as Work Allows. See EC-3A for Station Ranges

ALL TEMPORARY E&S MEASURES SHOULD NOT BE PLACED WITHIN 10' OF THE CENTERLINE OF THE NEAREST TRACK

INSTALL INLET PROTECTION IN ACCORDANCE WITH ENGINEER'S RECOMMENDATIONS

NOTE: UTILIZE SPECIAL STILLING BASIN AS STILLING BASIN WHERE APPLICABLE

NOTES: ANY DEVIATION FROM OPTIONS GIVEN WILL REQUIRE PRIOR APPROVAL BY ENGINEER.

ADDITIONAL EROSION CONTROL DEVICES MAY NEED TO BE INSTALLED AS DIRECTED BY THE ENGINEER.

RW Revision 6/1/14 JCL
Removed Permanent Utility Easement (PUE) from Parcel 20, Added PUE to Parcel 19

4/13/2015
R:\Projects\4\EC\U3308_rdu_EC_ps05.dgn

20 RESEARCH TRIANGLE REGIONAL PUBLIC TRANSPORTATION AUTHORITY DB 4709 PG 969

MATCH LINE SHEET 16

MATCH LINE SHEET 16