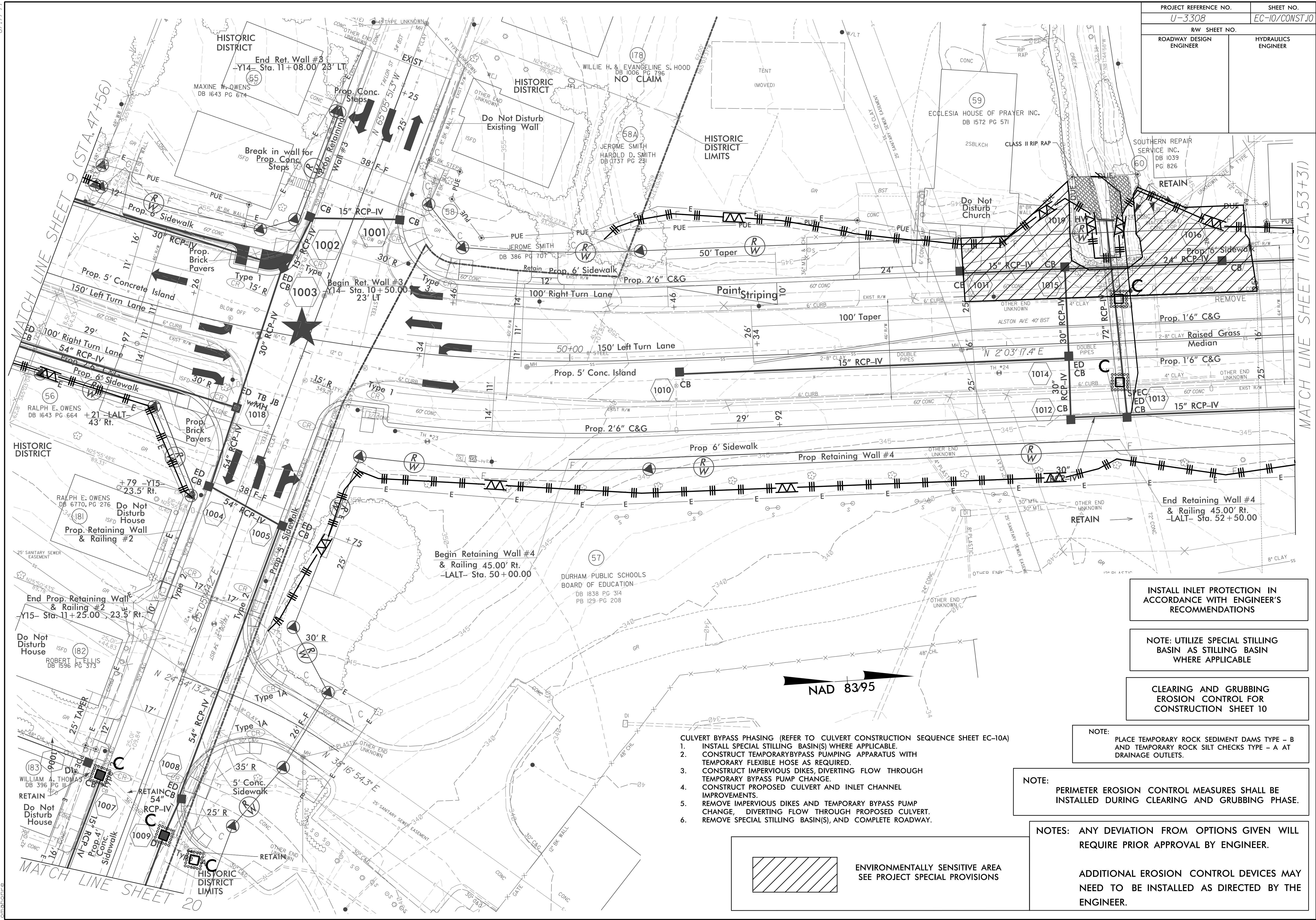


PROJECT REFERENCE NO.	SHEET NO.
U-3308	EC-10/CONST.10
RW SHEET NO.	
ROADWAY DESIGN ENGINEER	HYDRAULICS ENGINEER

RW Revision 6/11/14 JCL  
 Converted Permanent Utility Easement (PUE) to Temporary Construction Easement (TCE) on Parcel 57, Converted TCE to PUE on Parcel 59, Added new PUE to Parcel 60.



INSTALL INLET PROTECTION IN ACCORDANCE WITH ENGINEER'S RECOMMENDATIONS

NOTE: UTILIZE SPECIAL STILLING BASIN AS STILLING BASIN WHERE APPLICABLE

CLEARING AND GRUBBING EROSION CONTROL FOR CONSTRUCTION SHEET 10

NOTE: PLACE TEMPORARY ROCK SEDIMENT DAMS TYPE - B AND TEMPORARY ROCK SILT CHECKS TYPE - A AT DRAINAGE OUTLETS.

NOTE: PERIMETER EROSION CONTROL MEASURES SHALL BE INSTALLED DURING CLEARING AND GRUBBING PHASE.

NOTES: ANY DEVIATION FROM OPTIONS GIVEN WILL REQUIRE PRIOR APPROVAL BY ENGINEER.

ADDITIONAL EROSION CONTROL DEVICES MAY NEED TO BE INSTALLED AS DIRECTED BY THE ENGINEER.

- CULVERT BYPASS PHASING (REFER TO CULVERT CONSTRUCTION SEQUENCE SHEET EC-10A)
1. INSTALL SPECIAL STILLING BASIN(S) WHERE APPLICABLE.
  2. CONSTRUCT TEMPORARY BYPASS PUMPING APPARATUS WITH TEMPORARY FLEXIBLE HOSE AS REQUIRED.
  3. CONSTRUCT IMPERVIOUS DIKES, DIVERTING FLOW THROUGH TEMPORARY BYPASS PUMP CHANGE.
  4. CONSTRUCT PROPOSED CULVERT AND INLET CHANNEL IMPROVEMENTS.
  5. REMOVE IMPERVIOUS DIKES AND TEMPORARY BYPASS PUMP CHANGE, DIVERTING FLOW THROUGH PROPOSED CULVERT.
  6. REMOVE SPECIAL STILLING BASIN(S), AND COMPLETE ROADWAY.

 ENVIRONMENTALLY SENSITIVE AREA SEE PROJECT SPECIAL PROVISIONS

4/13/2015 R:\Projects\4\ECN\3308\_r.dwg\_EC.ps10\_CG.dgn