

RW Revision 6/1/14 JCL
 Added Permanent Utility Easement (PUE) and Adjusted Temporary Construction Easements (TCE) on Parcels 37 and 118

PROJECT REFERENCE NO. U-3308	SHEET NO. EC-7/CONST-7
RW SHEET NO.	HYDRAULICS ENGINEER
ROADWAY DESIGN ENGINEER	

INSTALL INLET PROTECTION IN ACCORDANCE WITH ENGINEER'S RECOMMENDATIONS

NOTE: UTILIZE SPECIAL STILLING BASIN AS STILLING BASIN WHERE APPLICABLE

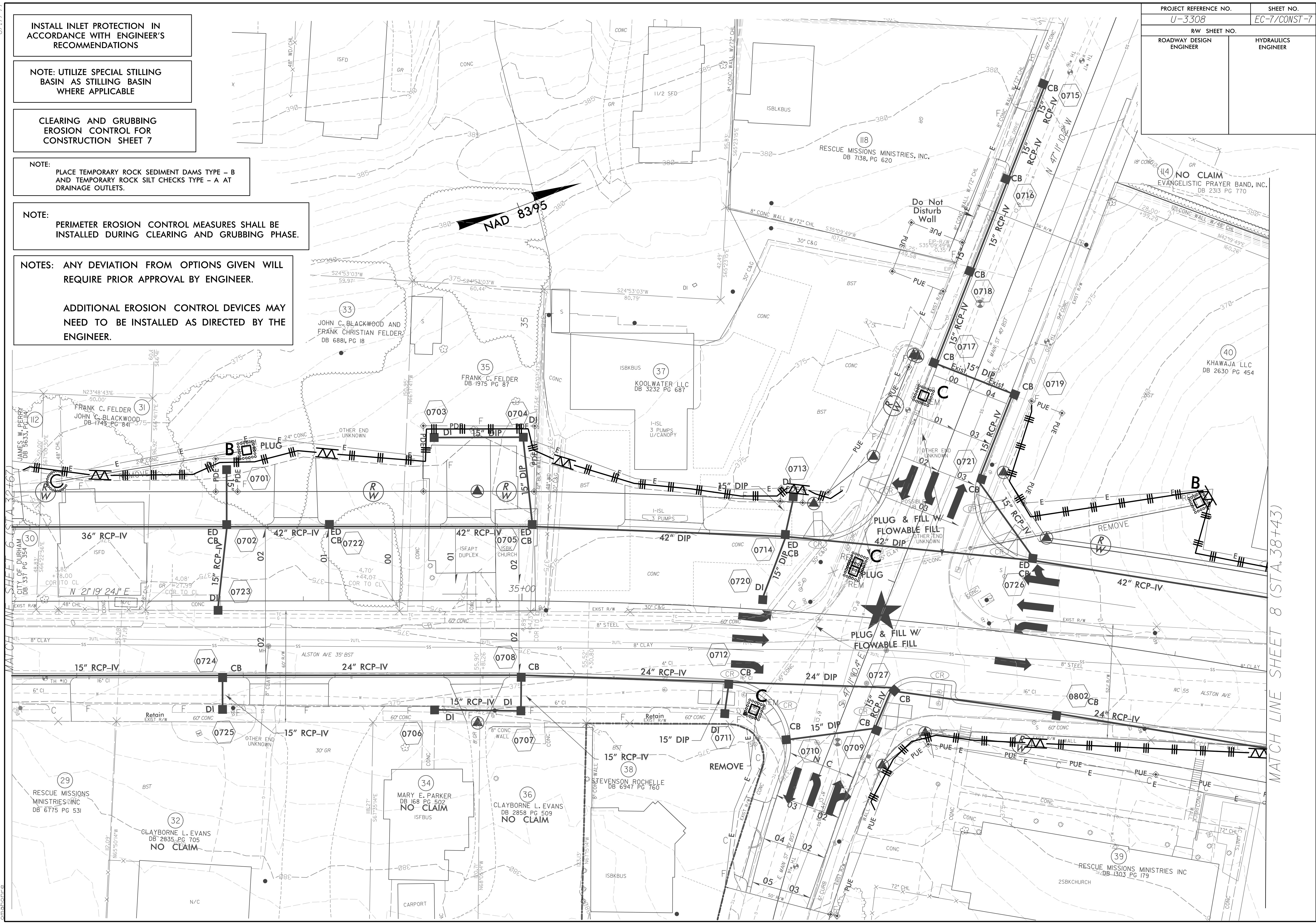
CLEARING AND GRUBBING EROSION CONTROL FOR CONSTRUCTION SHEET 7

NOTE: PLACE TEMPORARY ROCK SEDIMENT DAMS TYPE - B AND TEMPORARY ROCK SILT CHECKS TYPE - A AT DRAINAGE OUTLETS.

NOTE: PERIMETER EROSION CONTROL MEASURES SHALL BE INSTALLED DURING CLEARING AND GRUBBING PHASE.

NOTES: ANY DEVIATION FROM OPTIONS GIVEN WILL REQUIRE PRIOR APPROVAL BY ENGINEER.

ADDITIONAL EROSION CONTROL DEVICES MAY NEED TO BE INSTALLED AS DIRECTED BY THE ENGINEER.



4/13/2015 R:\Projects\U-3308_rdu.ec_ps07_cg.dgn
 MATCH LINE SHEET 6 (STA 32+76)
 MATCH LINE SHEET 8 (STA 38+43)