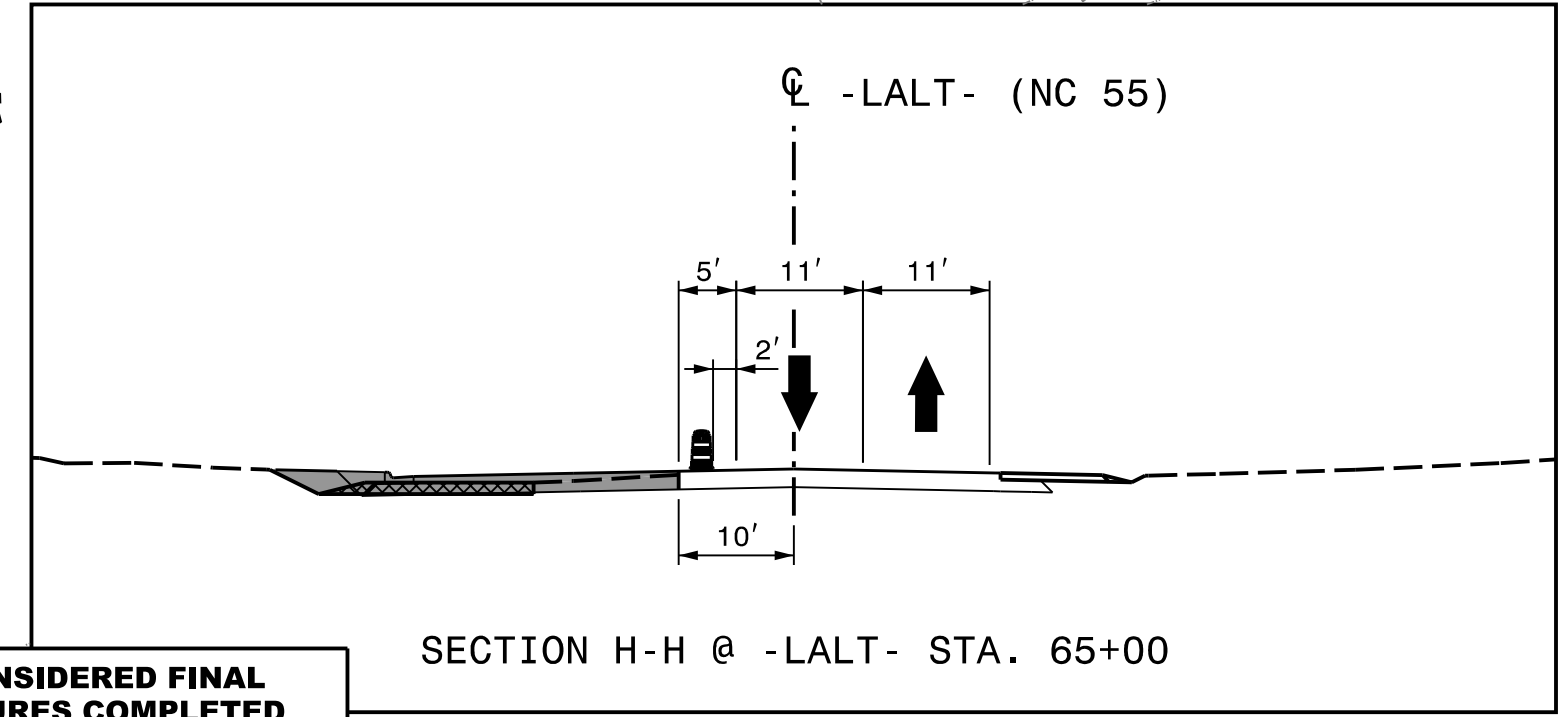
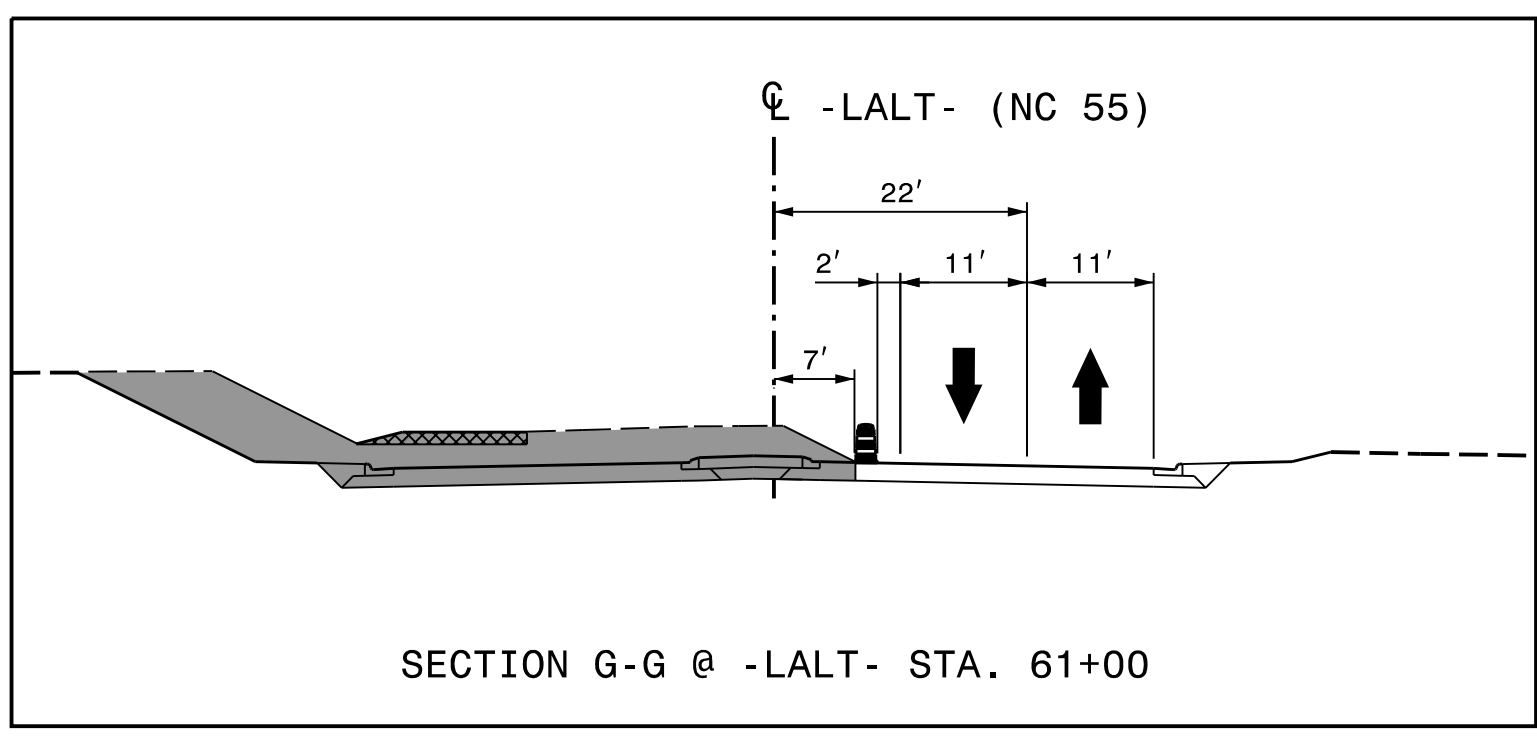
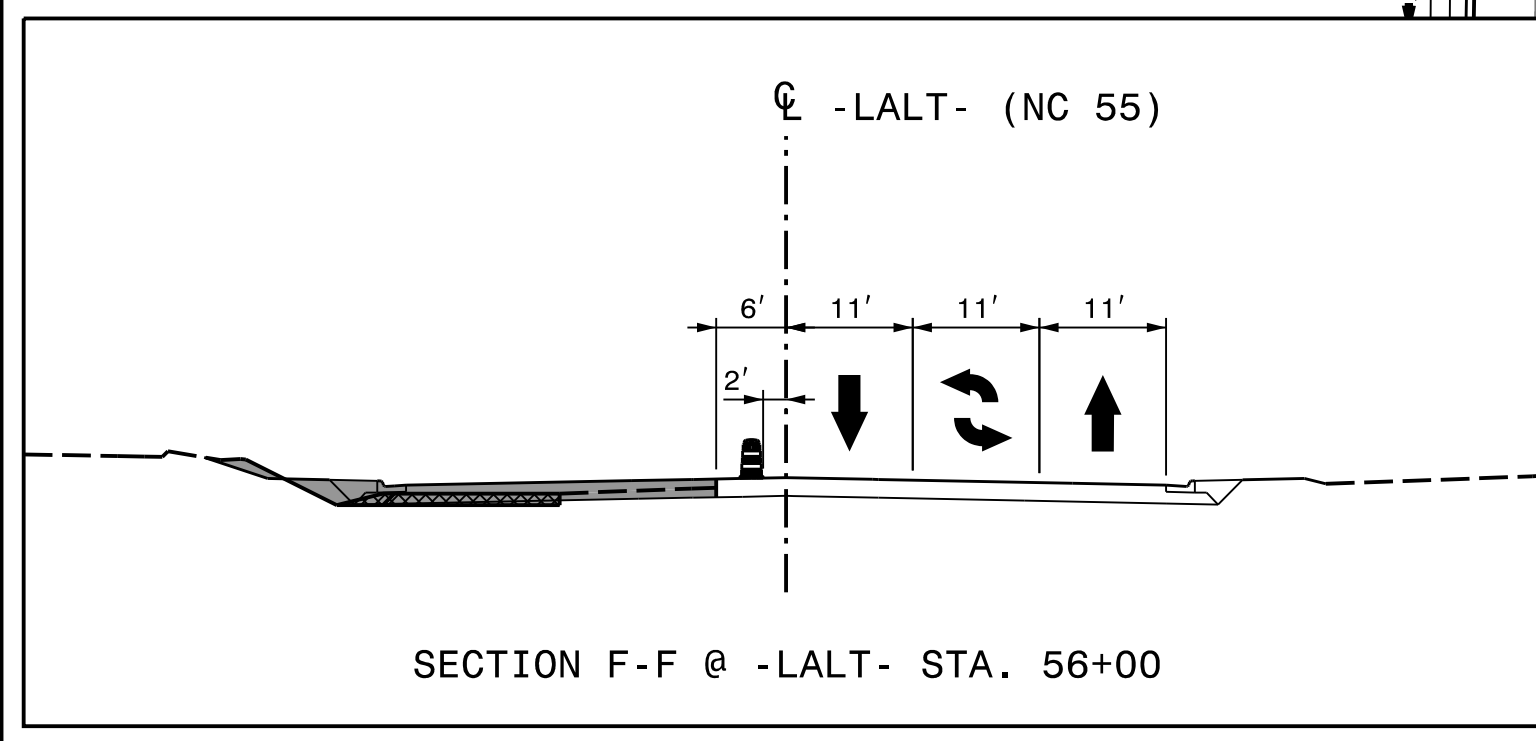
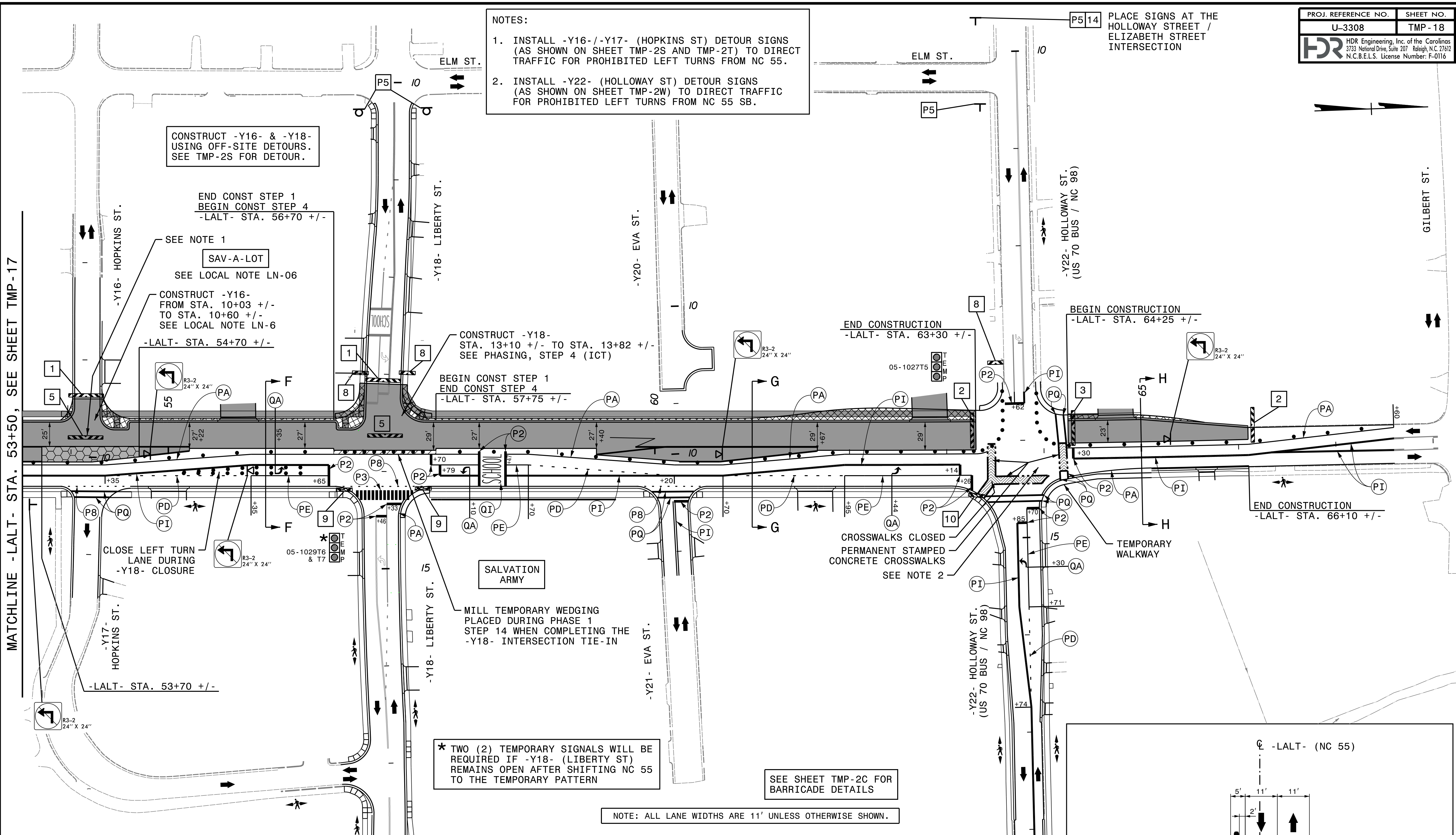


NOTES:

1. INSTALL -Y16-/-Y17- (HOPKINS ST) DETOUR SIGNS (AS SHOWN ON SHEET TMP-2S AND TMP-2T) TO DIRECT TRAFFIC FOR PROHIBITED LEFT TURNS FROM NC 55.
2. INSTALL -Y22- (HOLLOWAY ST) DETOUR SIGNS (AS SHOWN ON SHEET TMP-2W) TO DIRECT TRAFFIC FOR PROHIBITED LEFT TURNS FROM NC 55 SB.



\* TWO (2) TEMPORARY SIGNALS WILL BE REQUIRED IF -Y18- (LIBERTY ST) REMAINS OPEN AFTER SHIFTING NC 55 TO THE TEMPORARY PATTERN

SEE SHEET TMP-2C FOR BARRICADE DETAILS

NOTE: ALL LANE WIDTHS ARE 11' UNLESS OTHERWISE SHOWN.

CONSTRUCT -Y16- & -Y18- USING OFF-SITE DETOURS. SEE TMP-2S FOR DETOUR.

END CONST STEP 1  
BEGIN CONST STEP 4  
-LALT- STA. 56+70 +/-

CONSTRUCT -Y16- FROM STA. 10+03 +/- TO STA. 10+60 +/- SEE LOCAL NOTE LN-6

CONSTRUCT -Y18- STA. 13+10 +/- TO STA. 13+82 +/- SEE PHASING, STEP 4 (ICT)

BEGIN CONST STEP 1  
END CONST STEP 4  
-LALT- STA. 57+75 +/-

END CONSTRUCTION  
-LALT- STA. 63+30 +/-

BEGIN CONSTRUCTION  
-LALT- STA. 64+25 +/-

END CONSTRUCTION  
-LALT- STA. 66+10 +/-

CROSSWALKS CLOSED  
PERMANENT STAMPED CONCRETE CROSSWALKS  
SEE NOTE 2

SALVATION ARMY  
MILL TEMPORARY WEDGING PLACED DURING PHASE 1 STEP 14 WHEN COMPLETING THE -Y18- INTERSECTION TIE-IN

MATCHLINE -LALT- STA. 53+50, SEE SHEET TMP-17

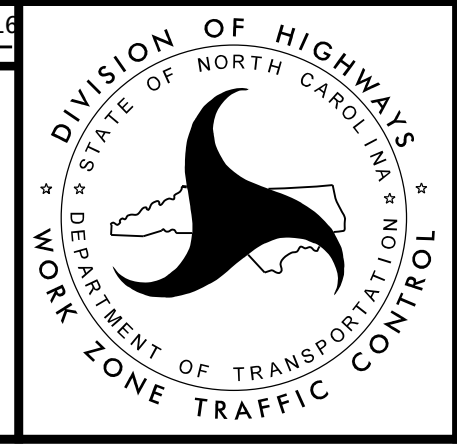
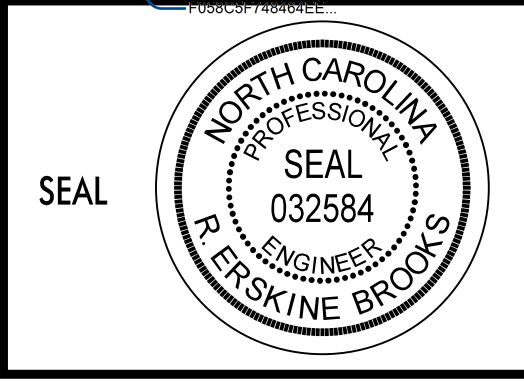
P5 14 PLACE SIGNS AT THE HOLLOWAY STREET / ELIZABETH STREET INTERSECTION

PLOT DRIVER: NCDOT\_color\_eng\_50.plt  
 USER: erbrooks  
 DATE: 5/12/2016  
 TIME: 4:02:03 PM  
 FILE: c:\pwworking\tpa\d0487729\U-3308\_TMP-TMP-18.dgn

REVISIONS

DOCUMENT NOT CONSIDERED FINAL UNLESS ALL SIGNATURES COMPLETED

APPROVED:  DATE: 5/13/2016



PHASE 2  
STEPS 1 - 6