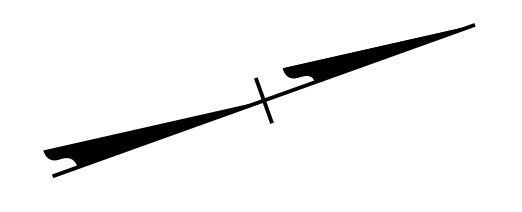
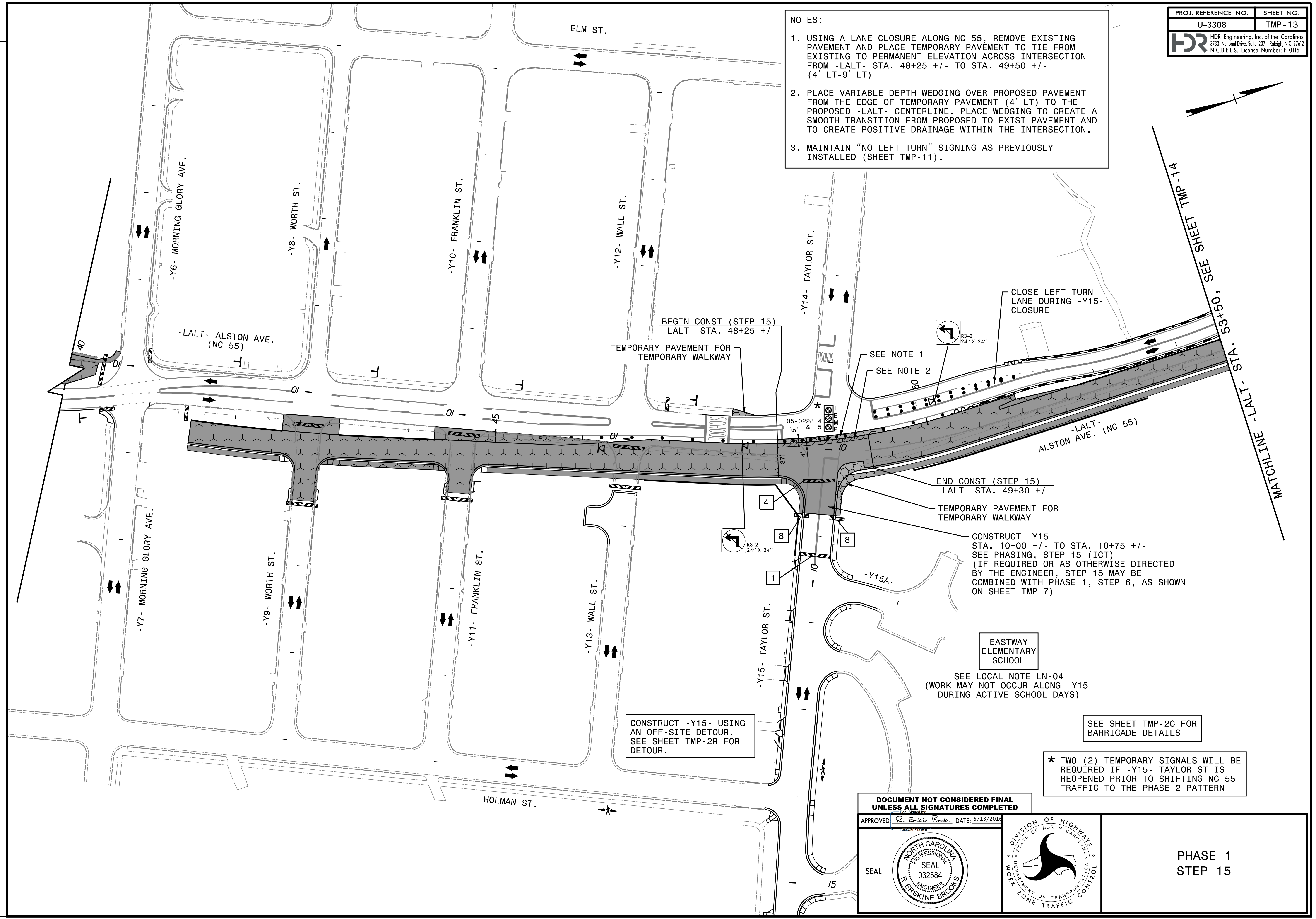


- NOTES:
1. USING A LANE CLOSURE ALONG NC 55, REMOVE EXISTING PAVEMENT AND PLACE TEMPORARY PAVEMENT TO TIE FROM EXISTING TO PERMANENT ELEVATION ACROSS INTERSECTION FROM -LALT- STA. 48+25 +/- TO STA. 49+50 +/- (4' LT-9' LT)
  2. PLACE VARIABLE DEPTH WEDGING OVER PROPOSED PAVEMENT FROM THE EDGE OF TEMPORARY PAVEMENT (4' LT) TO THE PROPOSED -LALT- CENTERLINE. PLACE WEDGING TO CREATE A SMOOTH TRANSITION FROM PROPOSED TO EXIST PAVEMENT AND TO CREATE POSITIVE DRAINAGE WITHIN THE INTERSECTION.
  3. MAINTAIN "NO LEFT TURN" SIGNING AS PREVIOUSLY INSTALLED (SHEET TMP-11).



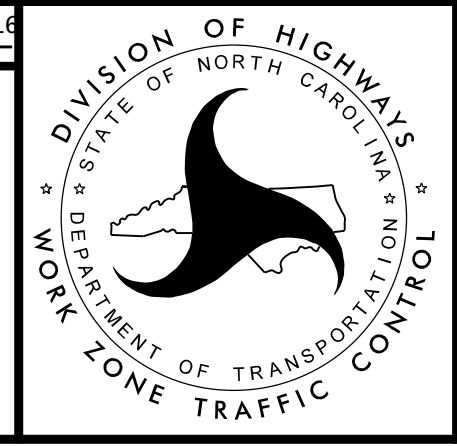
REVISIONS

PLOT DRIVER: NCDOT\_pdf\_color\_eng\_50.plt  
 USER: erbrooks  
 DATE: 5/12/2016  
 TIME: 4:00:59 PM  
 FILE: c:\pwworking\tpa\d0487729\U-3308\TMP-TMP-13.dgn



DOCUMENT NOT CONSIDERED FINAL  
 UNLESS ALL SIGNATURES COMPLETED

APPROVED:  DATE: 5/13/2016



PHASE 1  
 STEP 15

\* TWO (2) TEMPORARY SIGNALS WILL BE REQUIRED IF -Y15- TAYLOR ST IS REOPENED PRIOR TO SHIFTING NC 55 TRAFFIC TO THE PHASE 2 PATTERN

SEE SHEET TMP-2C FOR BARRICADE DETAILS

SEE LOCAL NOTE LN-04  
 (WORK MAY NOT OCCUR ALONG -Y15- DURING ACTIVE SCHOOL DAYS)

EASTWAY  
 ELEMENTARY  
 SCHOOL

CONSTRUCT -Y15- STA. 10+00 +/- TO STA. 10+75 +/-  
 SEE PHASING, STEP 15 (ICT)  
 (IF REQUIRED OR AS OTHERWISE DIRECTED BY THE ENGINEER, STEP 15 MAY BE COMBINED WITH PHASE 1, STEP 6, AS SHOWN ON SHEET TMP-7)

TEMPORARY PAVEMENT FOR TEMPORARY WALKWAY

END CONST (STEP 15)  
 -LALT- STA. 49+30 +/-

CONSTRUCT -Y15- USING AN OFF-SITE DETOUR.  
 SEE SHEET TMP-2R FOR DETOUR.

TEMPORARY PAVEMENT FOR TEMPORARY WALKWAY

BEGIN CONST (STEP 15)  
 -LALT- STA. 48+25 +/-

CLOSE LEFT TURN LANE DURING -Y15- CLOSURE

SEE NOTE 1  
 SEE NOTE 2

MATCHLINE -LALT- STA. 53+50, SEE SHEET TMP-11-14