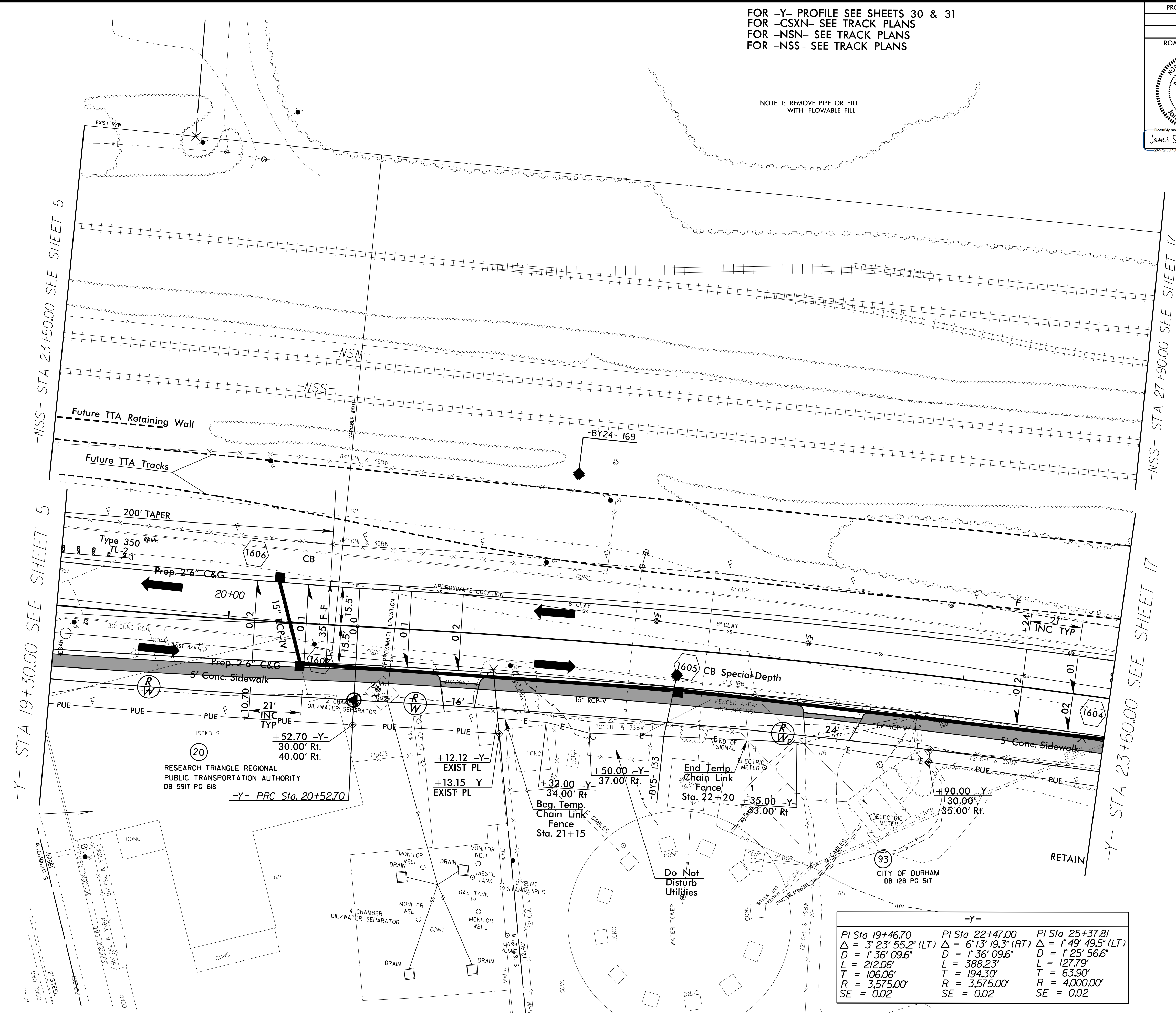


FOR -Y- PROFILE SEE SHEETS 30 & 31
 FOR -CSXN- SEE TRACK PLANS
 FOR -NSN- SEE TRACK PLANS
 FOR -NSS- SEE TRACK PLANS

NOTE 1: REMOVE PIPE OR FILL WITH FLOWABLE FILL



-NSS- STA 23+50.00 SEE SHEET 5

-Y- STA 19+30.00 SEE SHEET 5

-NSS- STA 27+90.00 SEE SHEET 17

-Y- STA 23+60.00 SEE SHEET 17

RESEARCH TRIANGLE REGIONAL
 PUBLIC TRANSPORTATION AUTHORITY
 DB 5917 PG 618
 -Y- PRC Sta. 20+52.70

End Temp.
 Chain Link
 Fence
 Sta. 22 + 20
 +35.00 -Y-
 33.00' Rt.

-Y-		
PI Sta 19+46.70	PI Sta 22+47.00	PI Sta 25+37.81
$\Delta = 3' 23' 55.2" (LT)$	$\Delta = 6' 13' 19.3" (RT)$	$\Delta = 1' 49' 49.5" (LT)$
$D = 1' 36' 09.6"$	$D = 1' 36' 09.6"$	$D = 1' 25' 56.6"$
$L = 212.06'$	$L = 388.23'$	$L = 127.79'$
$T = 106.06'$	$T = 194.30'$	$T = 63.90'$
$R = 3,575.00'$	$R = 3,575.00'$	$R = 4,000.00'$
$SE = 0.02$	$SE = 0.02$	$SE = 0.02$

8/17/19

23-NOV-2015 10:45
 9388505817.DWG
 23-NOV-2015 10:45
 9388505817.DWG