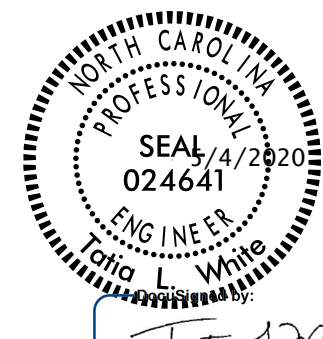

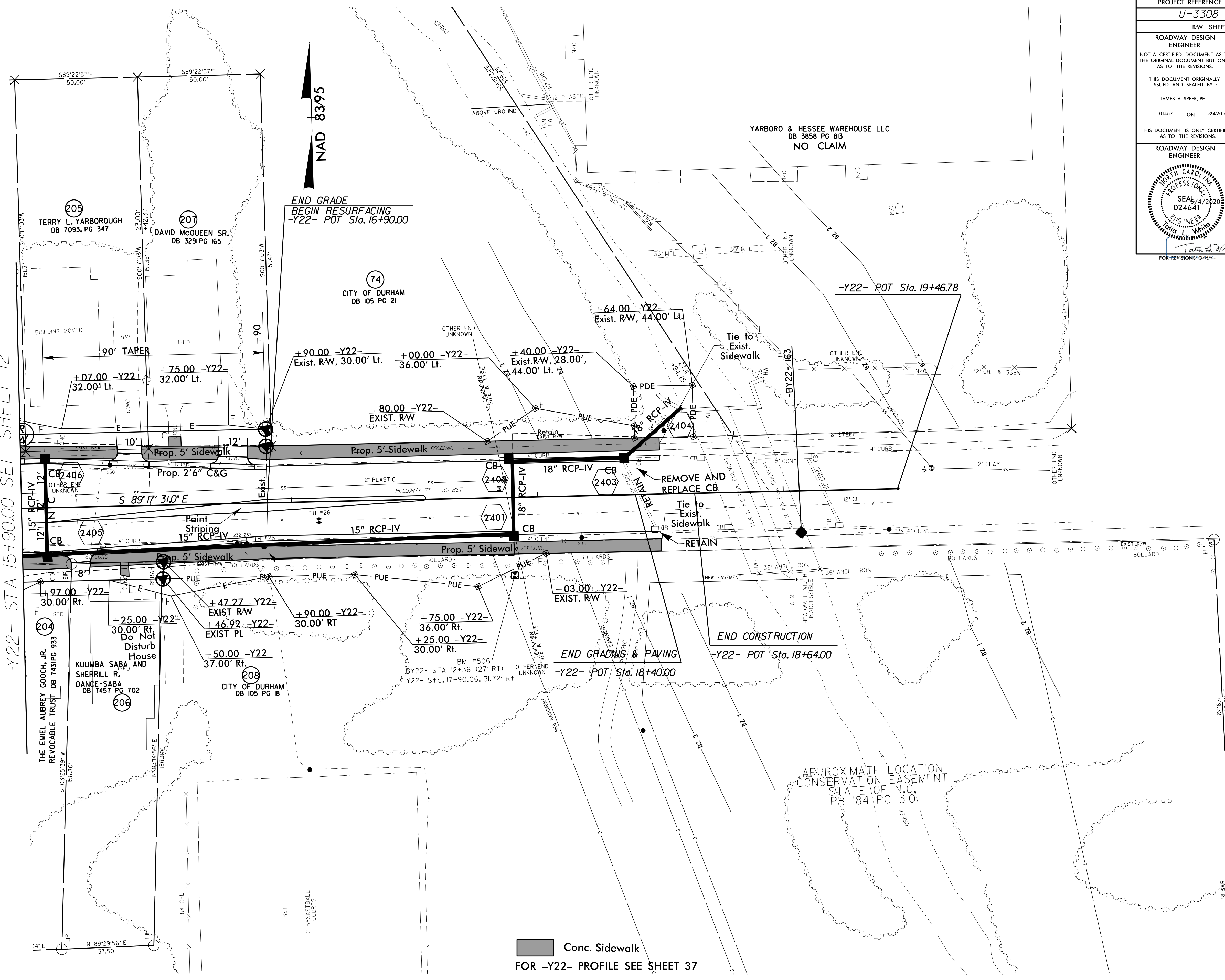



PROJECT REFERENCE NO. <b>U-3308</b>	SHEET NO. <b>24</b>
RW SHEET NO.	
ROADWAY DESIGN ENGINEER NOT A CERTIFIED DOCUMENT AS TO THE ORIGINAL DOCUMENT BUT ONLY AS TO THE REVISIONS. THIS DOCUMENT ORIGINALLY ISSUED AND SEALED BY: JAMES A. SPEER, PE 014571 ON 11/24/2015	HYDRAULICS ENGINEER NOT A CERTIFIED DOCUMENT AS TO THE ORIGINAL DOCUMENT BUT ONLY AS TO THE REVISIONS. THIS DOCUMENT ORIGINALLY ISSUED AND SEALED BY: WILLIAM H. ELAM, PE 019721 ON 11/23/2015
THIS DOCUMENT IS ONLY CERTIFIED AS TO THE REVISIONS.	THIS DOCUMENT IS ONLY CERTIFIED AS TO THE REVISIONS.
ROADWAY DESIGN ENGINEER 	HYDRAULICS ENGINEER 
FOR REVISIONS ONLY	FOR REVISIONS ONLY

5/5/2020 CONSTRUCTION REVISION - Y22 VERTICAL ALIGNMENT LOWERED FROM STATION 15+00 TO STATION 18+50

8/17/99

-Y22- STA 15+90.00 SEE SHEET 12



 Conc. Sidewalk  
 FOR -Y22- PROFILE SEE SHEET 37  
 NOTE 1: REMOVE PIPE OR FILL WITH FLOWABLE FILL

04 MAY 2020 15:55 13308.rdy-ps24.dgn  
3:54:00 PM  
3:54:00 PM