

CONSTRUCTION REVISION 1/16/2018 JBG - MODIFIED ROADWAY APPROACH, LANE CONFIGURATION, AND SIDEWALK TO ACCOMMODATE A WALKWAY ON THE PETTIGREW STREET BRIDGE FROM STA. 12+00.00 TO STA. 20+40.63

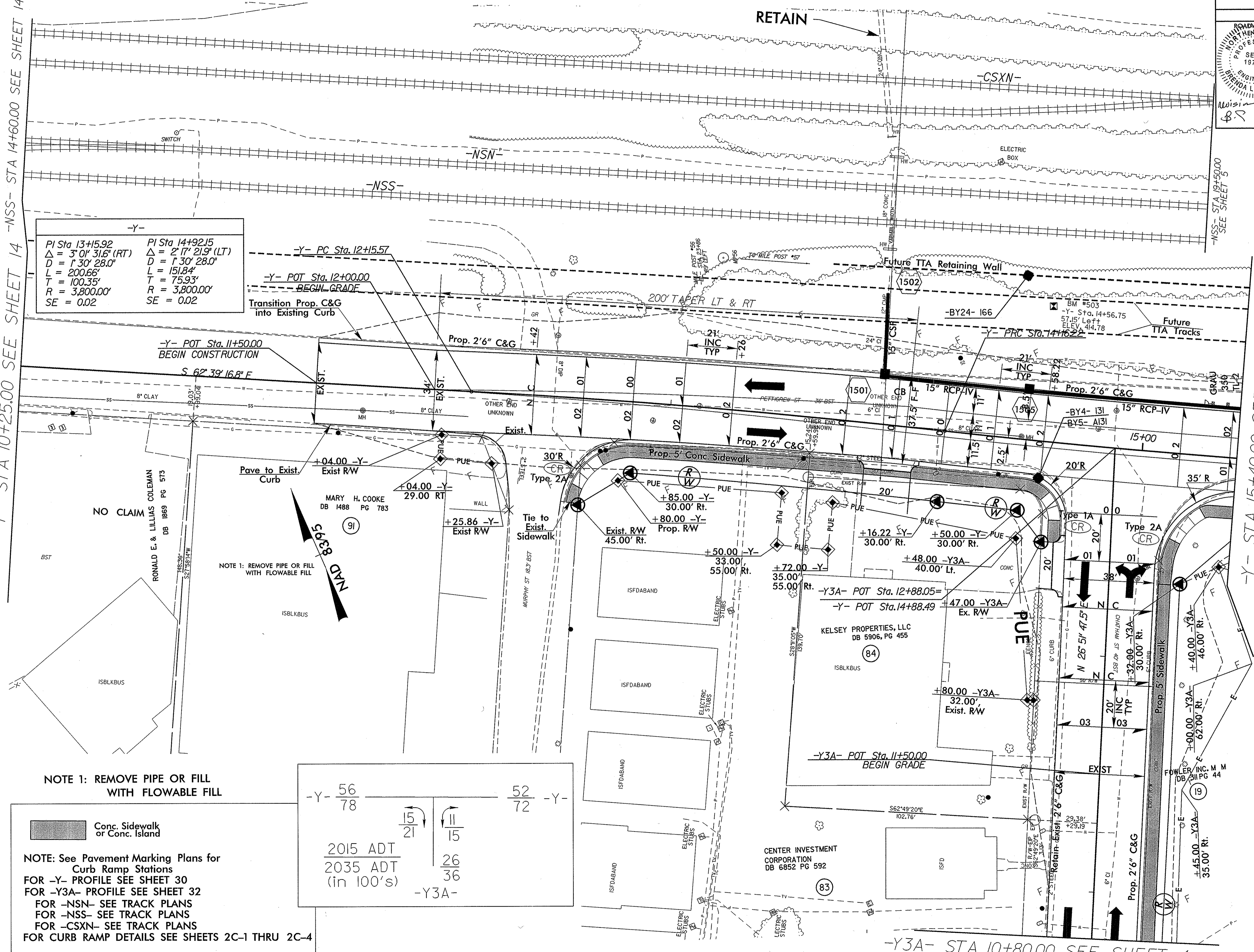
8/17/99

-Y- STA 10+25.00 SEE SHEET 14 -NSS- STA 14+60.00 SEE SHEET 14

-Y- STA 15+40.00 SEE SHEET 5

-Y-

PI Sta 13+15.92	PI Sta 14+92.15
$\Delta = 3' 01" 31.6" (RT)$	$\Delta = 2' 17" 21.9" (LT)$
$D = 1' 30" 28.0"$	$D = 1' 30" 28.0"$
$L = 200.66'$	$L = 151.84'$
$T = 100.35'$	$T = 75.93'$
$R = 3,800.00'$	$R = 3,800.00'$
$SE = 0.02$	$SE = 0.02$



NOTE 1: REMOVE PIPE OR FILL WITH FLOWABLE FILL

Conc. Sidewalk or Conc. Island  
 NOTE: See Pavement Marking Plans for Curb Ramp Stations  
 FOR -Y- PROFILE SEE SHEET 30  
 FOR -Y3A- PROFILE SEE SHEET 32  
 FOR -NSN- SEE TRACK PLANS  
 FOR -NSS- SEE TRACK PLANS  
 FOR -CSXN- SEE TRACK PLANS  
 FOR CURB RAMP DETAILS SEE SHEETS 2C-1 THRU 2C-4

-Y-  $\frac{56}{78}$   $\frac{52}{72}$  -Y-

2015 ADT	15	11
2035 ADT	26	15
(in 100's)	36	

-Y3A-

-Y3A- STA 10+80.00 SEE SHEET 4

12-JAN-2018 09:45  
 P:\Roadway\133308\_rdy-ps15.dgn  
 \$\$\$\$\$\$