

PROJECT REFERENCE NO. U-3308	SHEET NO. 9
RW SHEET NO.	
ROADWAY DESIGN ENGINEER	HYDRAULICS ENGINEER
THIS DOCUMENT ORIGINALLY ISSUED AND SEALED BY: JAMES A. SPEER 014571 ON 11/24/15	THIS DOCUMENT ORIGINALLY ISSUED AND SEALED BY: WILLIAM H. ELAM 019721 ON 11/23/15
THIS MEDIUM SHALL NOT BE CONSIDERED A CERTIFIED DOCUMENT	THIS MEDIUM SHALL NOT BE CONSIDERED A CERTIFIED DOCUMENT




-Y10- STA 12+60.00 SEE SHEET 19

-Y12- STA 12+70.00 SEE SHEET 21

NOTE 1: REMOVE PIPE OR FILL WITH FLOWABLE FILL

FOR -LALT- PROFILE SEE SHEET 28
FOR -Y10- PROFILE SEE SHEET 34
FOR -Y11- PROFILE SEE SHEET 34
FOR -Y12- PROFILE SEE SHEET 34
FOR -Y13- PROFILE SEE SHEET 34
FOR CURB RAMP DETAILS SEE SHEETS 2C-1 THRU 2C-4

NOTE: See Pavement Marking Plans for Curb Ramp Stations

-  Conc. Sidewalk or Island
-  Pavement Removal
-  Proposed Brick Pavers

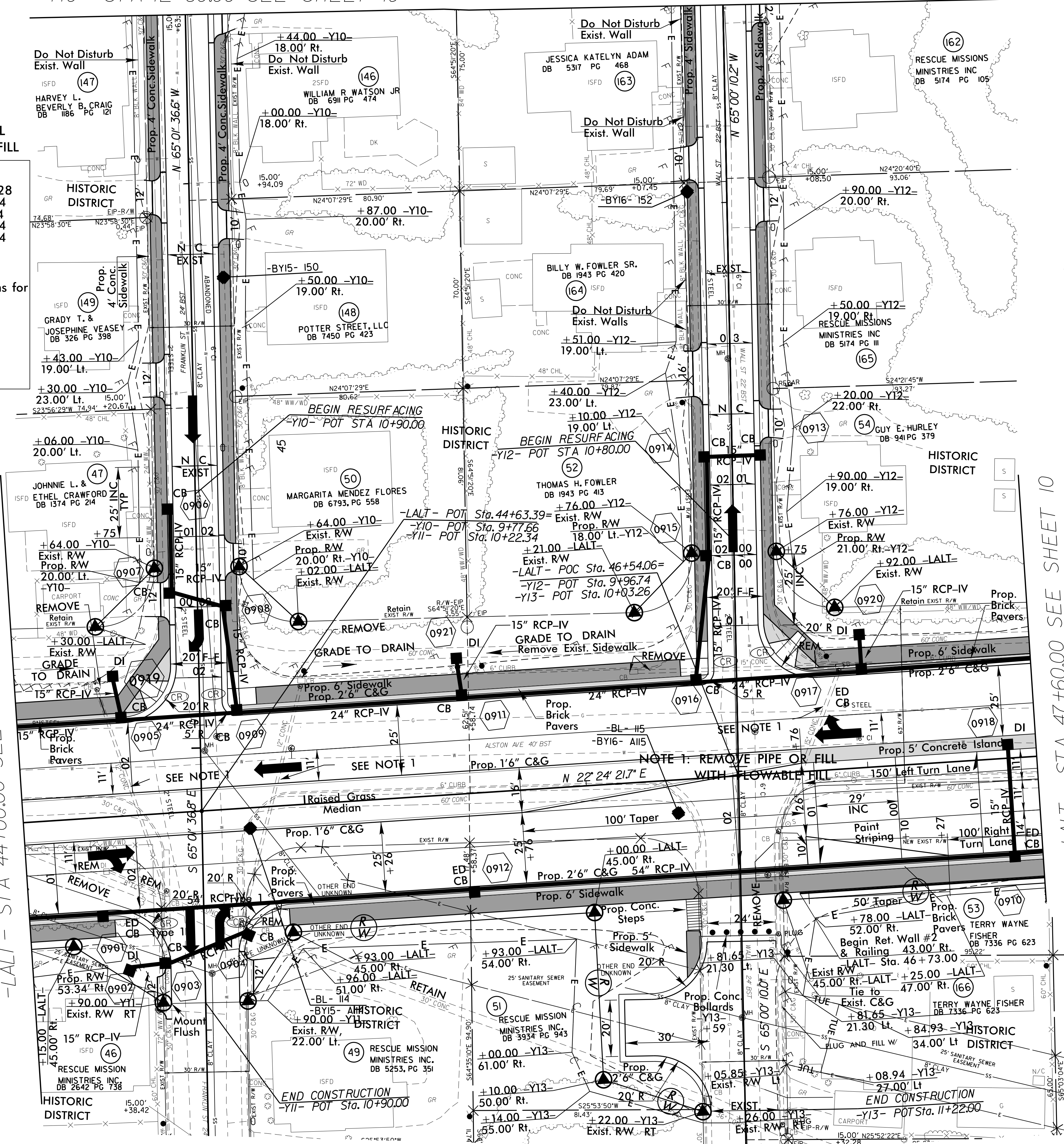
-LALT- STA 44+00.00 SEE SHEET 8

-LALT- STA 47+60.00 SEE SHEET 10



RW REVISION: 12/21/18 - UPDATED THE PROPERTY INFORMATION TO REMOVE AN EXISTING 25' SANITARY SEWER EASEMENT. - TLW

21-DEC-2018 12:35 9:58:50 USER: JAVIER.MARTINEZ



-LALT- STA 44+00.00 SEE SHEET 8

-LALT- STA 47+60.00 SEE SHEET 10



RW REVISION: 12/21/18 - UPDATED THE PROPERTY INFORMATION TO REMOVE AN EXISTING 25' SANITARY SEWER EASEMENT. - TLW

21-DEC-2018 12:35 9:58:50 USER: JAVIER.MARTINEZ