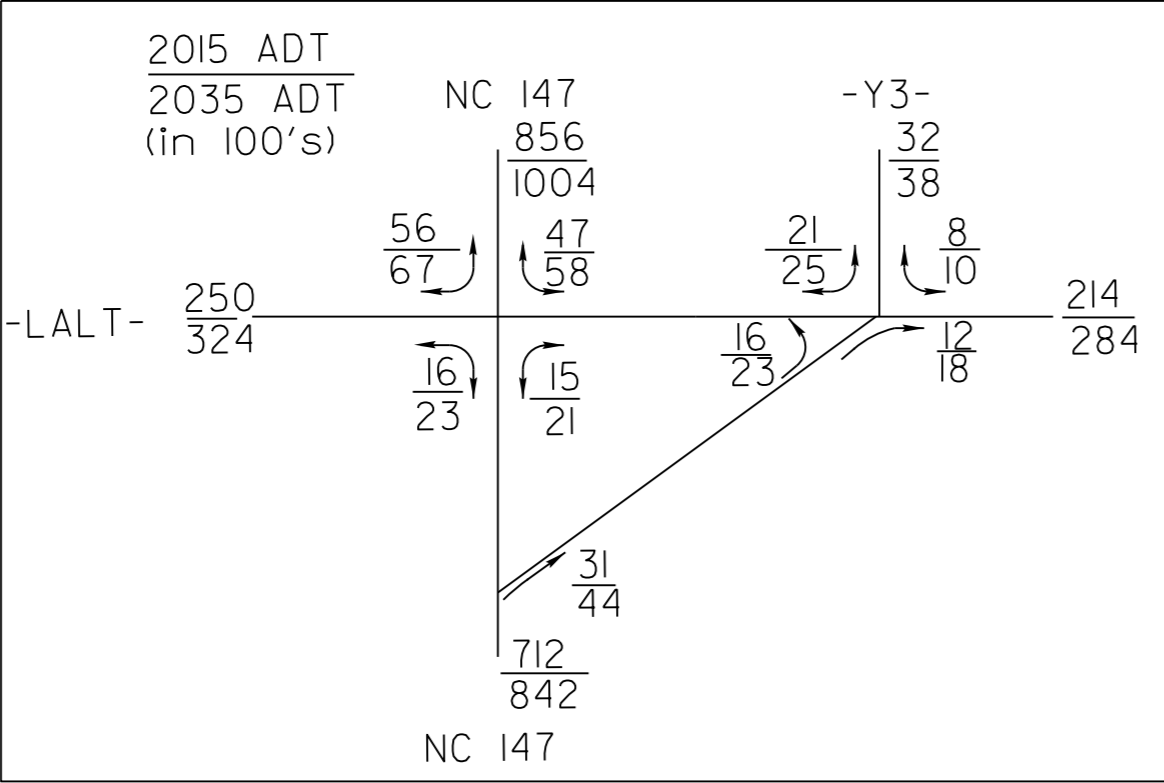


REVISIONS  
RIGHT OF WAY REVISION 10/16/2017 - AKW  
PARCEL 17 - ADDED TCE



- (17) CITY OF DURHAM  
DB 312 PG 131
- (80) MECHANICS & FARMERS BANK  
DB 2734 PG 941
- (81) CITY OF DURHAM  
DB 314 PG 609

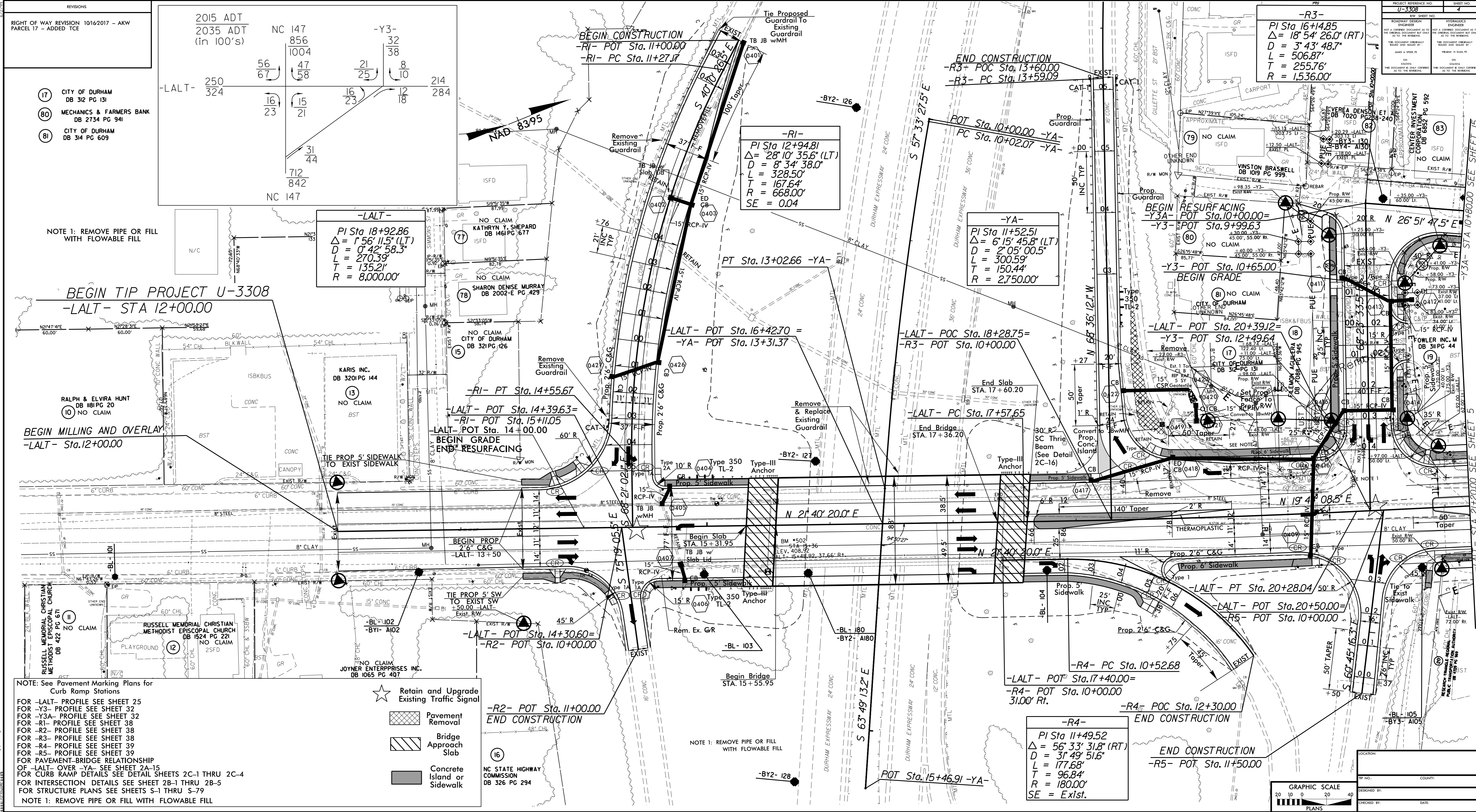
NOTE 1: REMOVE PIPE OR FILL WITH FLOWABLE FILL

BEGIN TIP PROJECT U-3308  
-LALT- STA 12+00.00

BEGIN MILLING AND OVERLAY  
-LALT- Sta.12+00.00

NOTE: See Pavement Marking Plans for Curb Ramp Stations  
FOR -LALT- PROFILE SEE SHEET 25  
FOR -Y3- PROFILE SEE SHEET 32  
FOR -Y3A- PROFILE SEE SHEET 32  
FOR -R1- PROFILE SEE SHEET 38  
FOR -R2- PROFILE SEE SHEET 38  
FOR -R3- PROFILE SEE SHEET 38  
FOR -R4- PROFILE SEE SHEET 39  
FOR -R5- PROFILE SEE SHEET 39  
FOR PAVEMENT-BRIDGE RELATIONSHIP OF -LALT- OVER -YA- SEE SHEET 2A-15  
FOR CURB RAMP DETAILS SEE DETAIL SHEETS 2C-1 THRU 2C-4  
FOR INTERSECTION DETAILS SEE SHEET 2B-1 THRU 2B-5  
FOR STRUCTURE PLANS SEE SHEETS S-1 THRU S-79  
NOTE 1: REMOVE PIPE OR FILL WITH FLOWABLE FILL

- ★ Retain and Upgrade Existing Traffic Signal
- ▨ Pavement Removal
- ▨ Bridge Approach Slab
- ▨ Concrete Island or Sidewalk

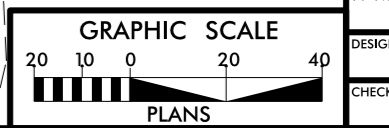


-R3-  
PI Sta 16+14.85  
 $\Delta = 18' 54" 26.0" (RT)$   
 $D = 3' 43" 48.7"$   
 $L = 506.87'$   
 $T = 255.76'$   
 $R = 1536.00'$

-R1-  
PI Sta 12+94.81  
 $\Delta = 28' 10" 35.6" (LT)$   
 $D = 8' 34" 38.0"$   
 $L = 328.50'$   
 $T = 167.64'$   
 $R = 668.00'$   
 $SE = 0.04$

-YA-  
PI Sta 11+52.51  
 $\Delta = 6' 15" 45.8" (LT)$   
 $D = 2' 05" 00.5"$   
 $L = 300.59'$   
 $T = 150.44'$   
 $R = 2750.00'$

-R4-  
PI Sta 11+49.52  
 $\Delta = 56' 33" 31.8" (RT)$   
 $D = 3' 49" 51.6"$   
 $L = 177.68'$   
 $T = 96.84'$   
 $R = 180.00'$   
 $SE = Exst.$



PROJECT REFERENCE NO.  
U-3308  
SHEET NO.  
4

ROADWAY DESIGN ENGINEER  
VEREA DENSON ET AL  
DB 7020 PG 288-240

NO CLAIM  
ISFD

NO CLAIM  
ISFD

NO CLAIM  
ISFD

NO CLAIM  
ISFD

NO CLAIM  
ISFD

NO CLAIM  
ISFD

NO CLAIM  
ISFD

-Y2A- STA 10+800.00 SEE SHEET 15

-LALT- STA 2120.00 SEE SHEET 5