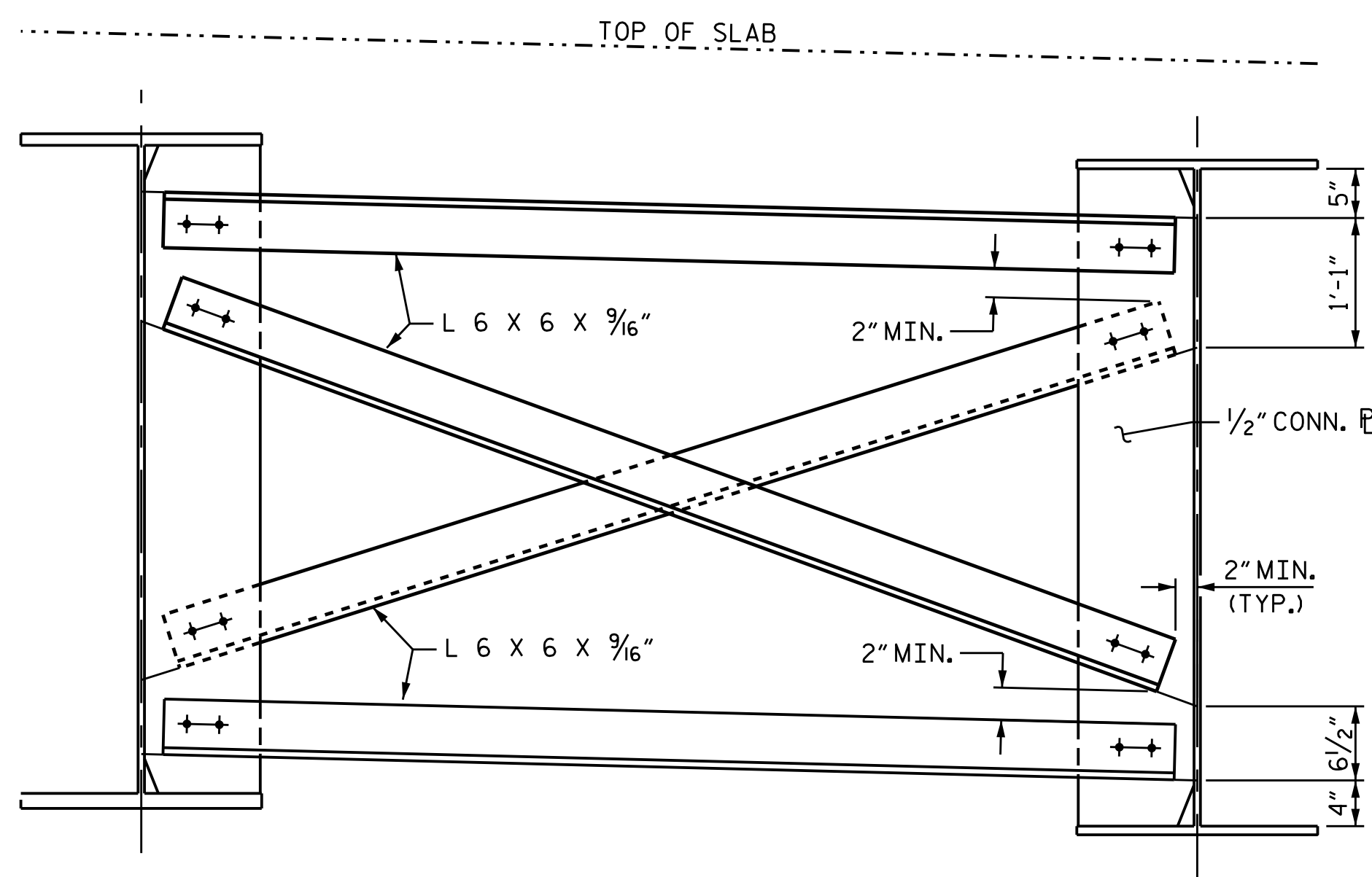
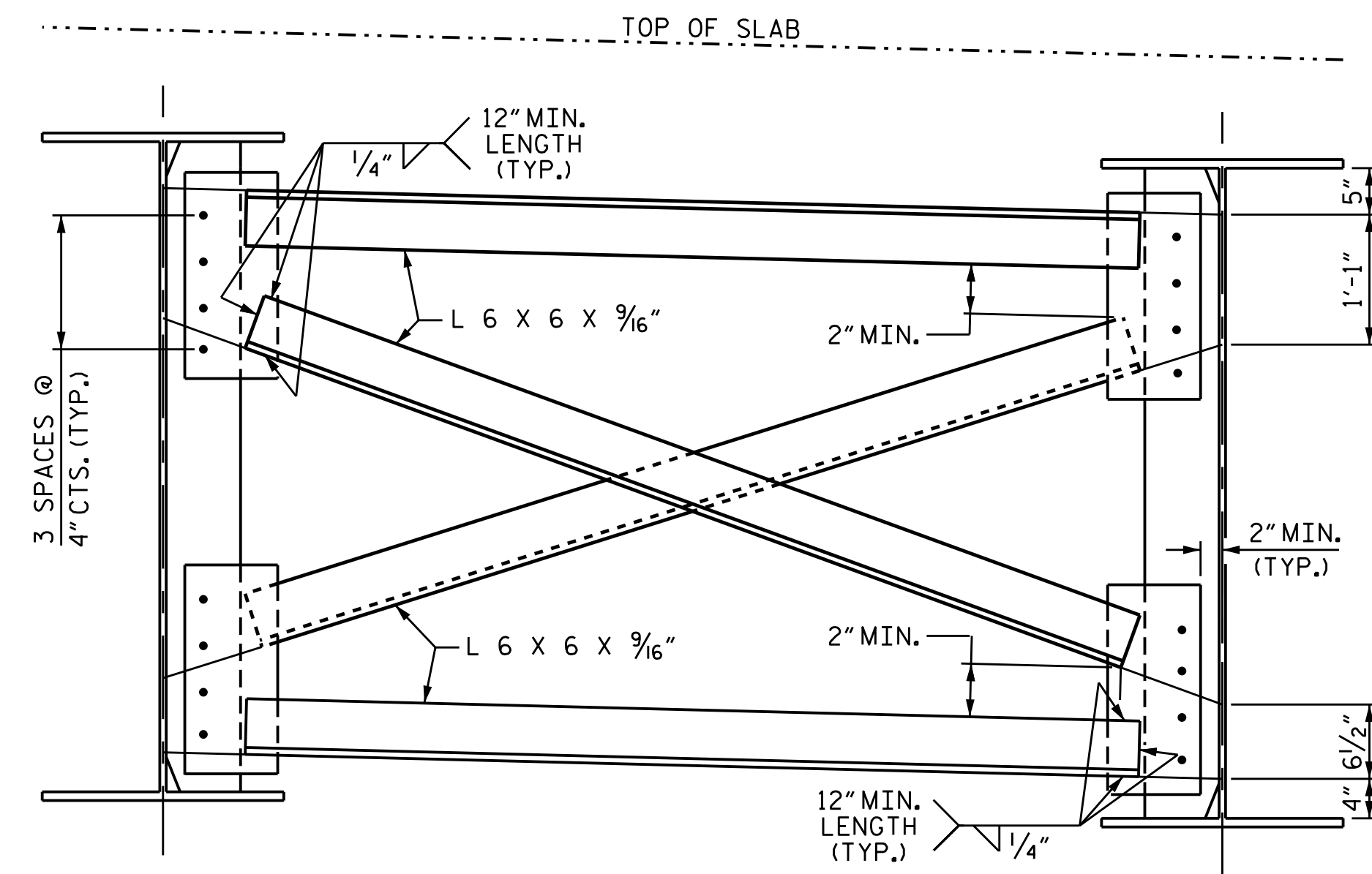


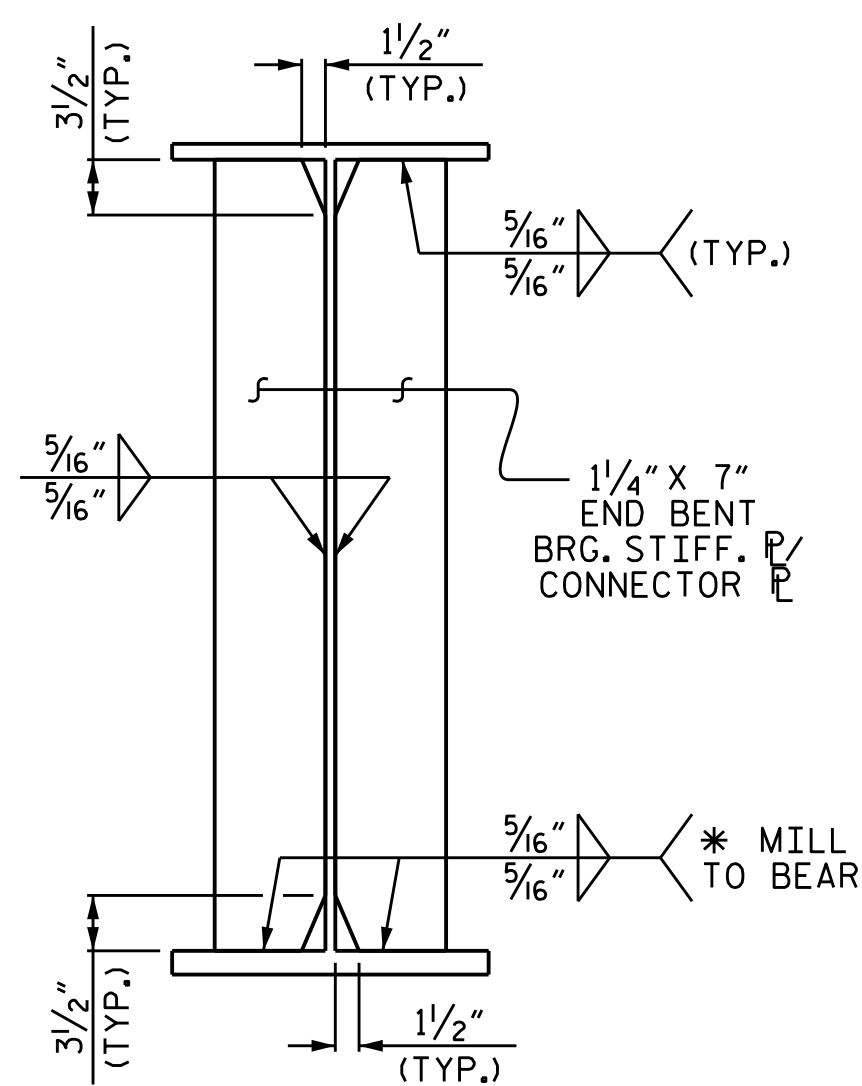
TYPICAL END BENT DIAPHRAGM



TYPICAL INTERMEDIATE DIAPHRAGM

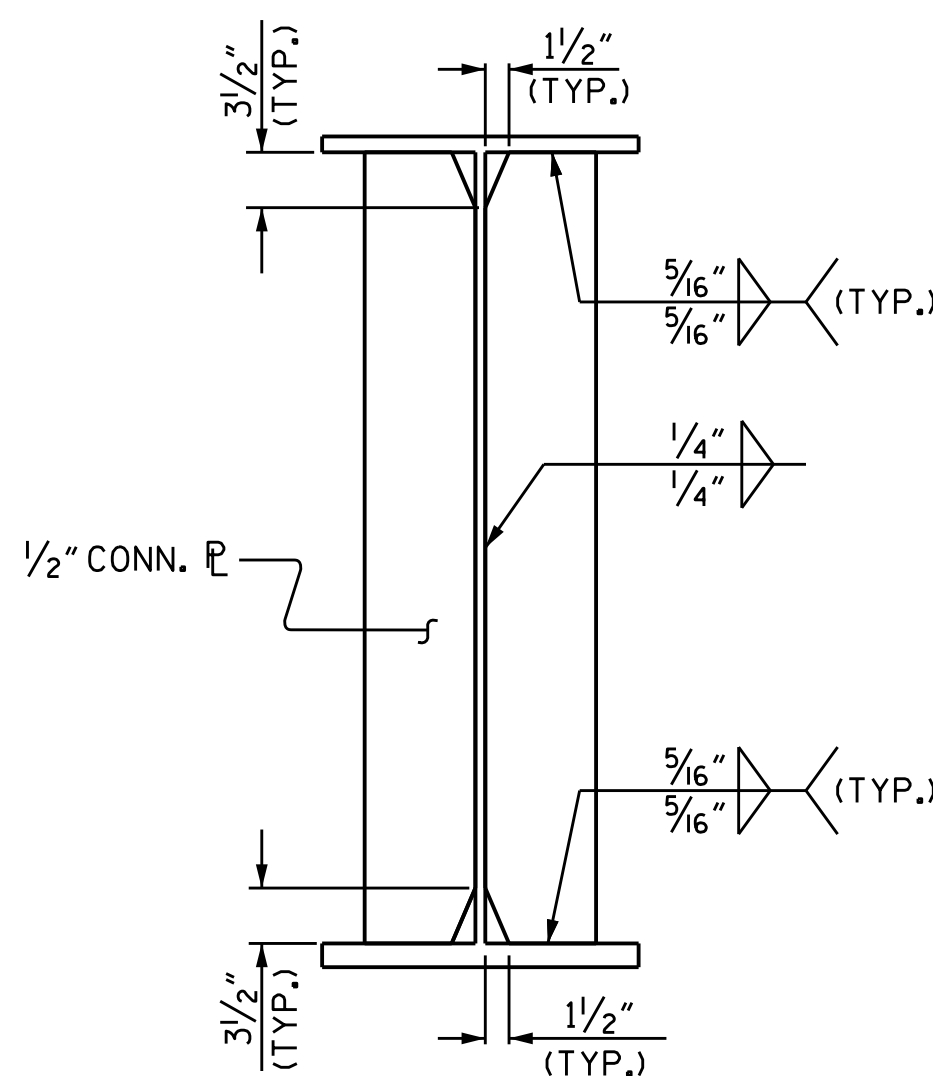


TYPICAL OPTIONAL INTERMEDIATE DIAPHRAGM

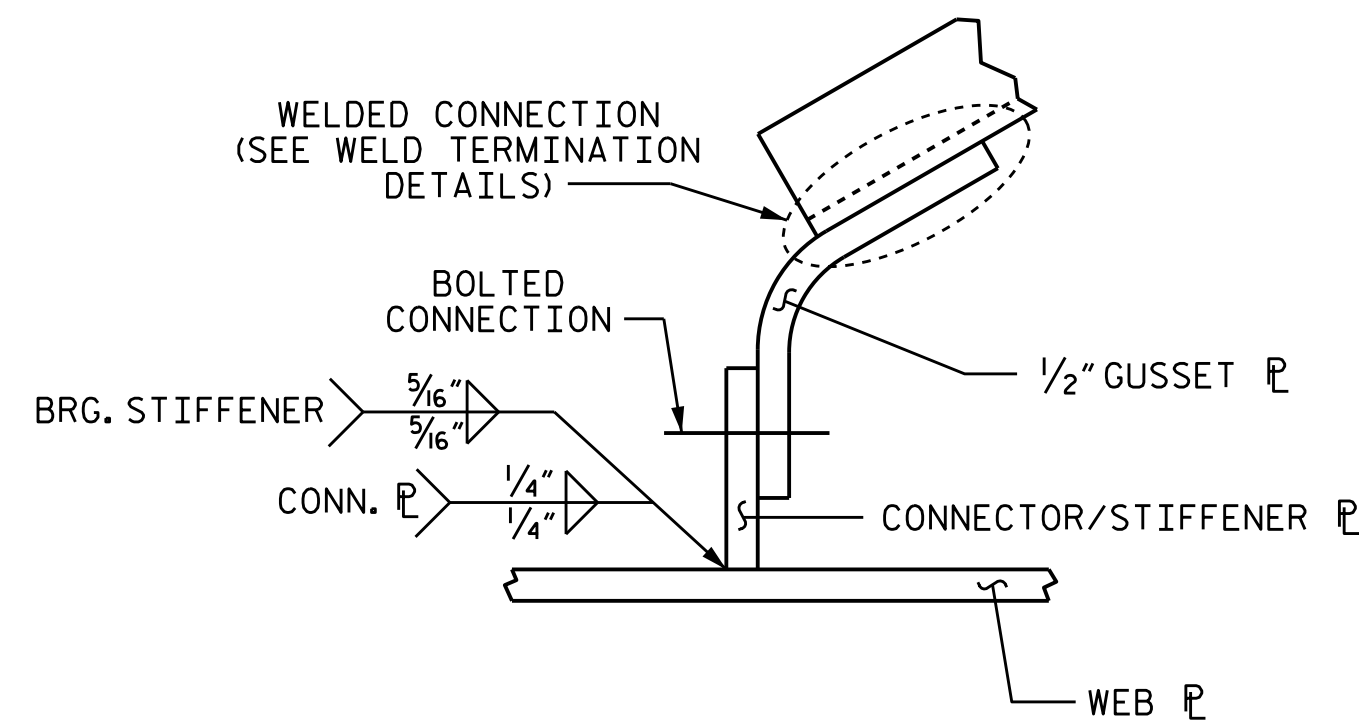


BEARING STIFFENER / CONNECTOR PLATE

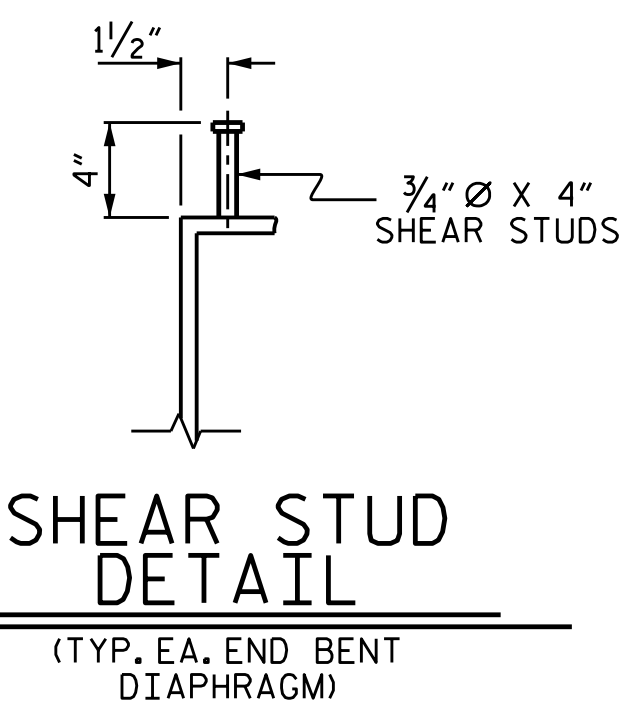
* WELD ONLY WHEN USED AS A CONNECTOR PLATE.



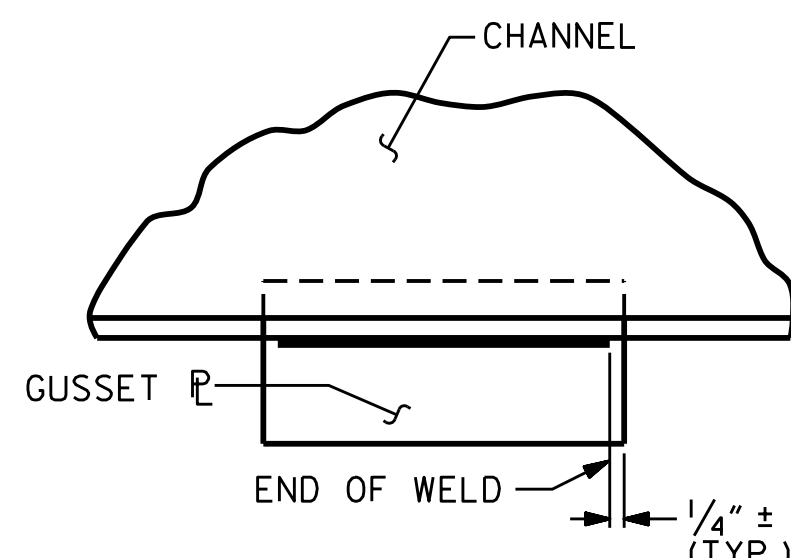
CONNECTOR \bar{P} DETAIL



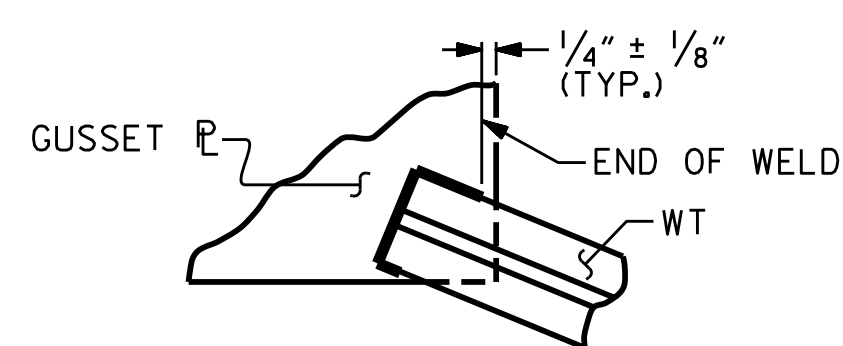
CURVED GUSSET PLATE DETAILS



SHEAR STUD DETAIL
(TYP. EA. END BENT DIAPHRAGM)

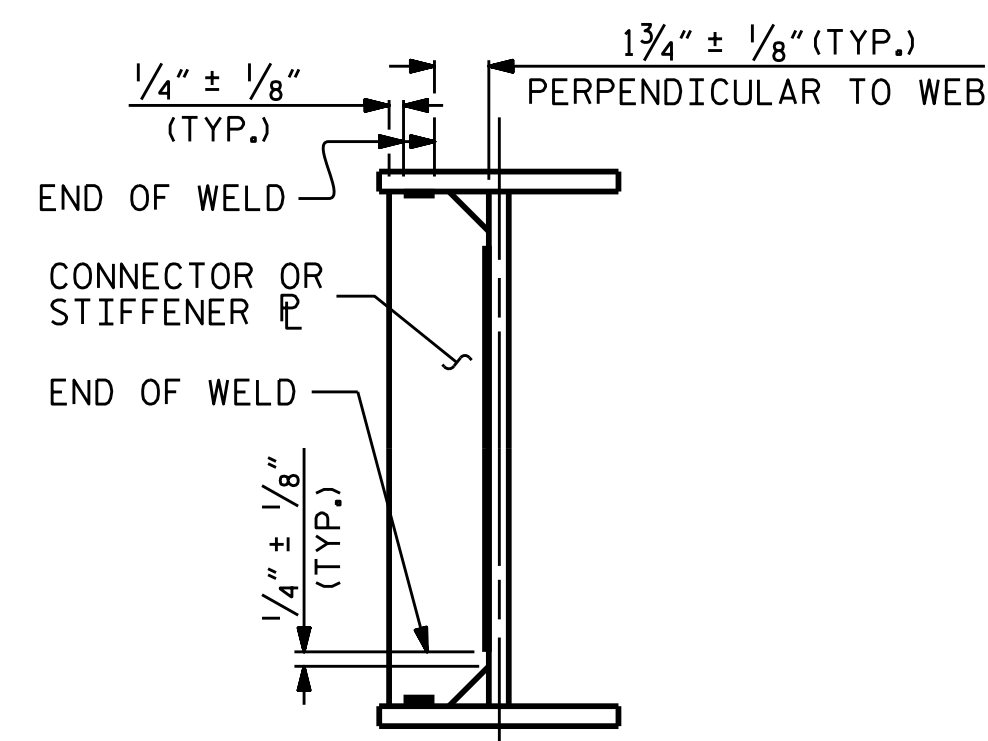


TYPICAL GUSSET PLATE CONNECTION



TYPICAL "TEE" TO GUSSET PLATE CONNECTION

WELD TERMINATION DETAILS



TYPICAL STIFFENER OR CONNECTOR PLATE CONNECTIONS

DRAWN BY : A. SORSENGINH DATE : 5/2015
 CHECKED BY : J.P. ADAMS DATE : 6/2015
 DESIGN ENGINEER OF RECORD : A. SORSENGINH DATE : 9/2015

29-MAR-2016 09:19
 R:\Structures\Plans\STR 1\SUPERSTRUCTURE\B4490.SD.SS.1.dgn
 jpadams



PROJECT NO. B-4490
 CUMBERLAND COUNTY
 STATION: 29+57.01 -L-

SHEET 2 OF 4

STATE OF NORTH CAROLINA
 DEPARTMENT OF TRANSPORTATION
 RALEIGH

SUPERSTRUCTURE
 STRUCTURAL STEEL
 DETAILS

DOCUMENT NOT CONSIDERED
 FINAL UNLESS ALL
 SIGNATURES COMPLETED

REVISIONS						SHEET NO.	
NO.	BY:	DATE:	NO.	BY:	DATE:	S-10	
1			3			TOTAL SHEETS	
2			4			84	

STR. #1