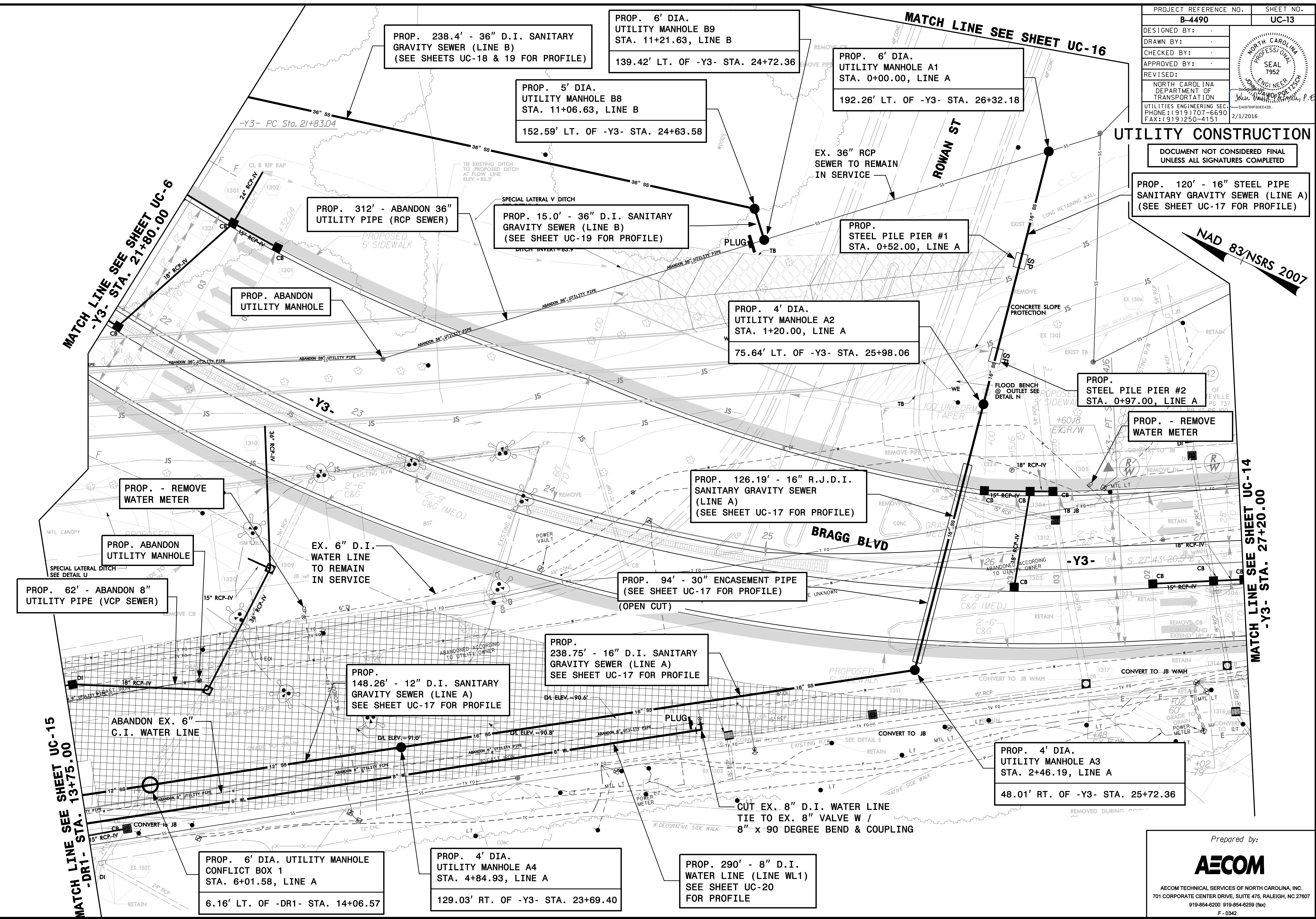


PROJECT REFERENCE NO. B-4490	SHEET NO. UC-13
DESIGNED BY:	
DRAWN BY:	
CHECKED BY:	
APPROVED BY:	
REVISED:	NORTH CAROLINA DEPARTMENT OF TRANSPORTATION UTILITIES ENGINEERING SEC. PHONE: (919) 707-6690 FAX: (919) 250-4151 2/1/2016

UTILITY CONSTRUCTION

DOCUMENT NOT CONSIDERED FINAL
UNLESS ALL SIGNATURES COMPLETED

PROP. 120' - 16" STEEL PIPE
SANITARY GRAVITY SEWER (LINE A)
(SEE SHEET UC-17 FOR PROFILE)



DATE: 2/1/2016
TIME: 2:38:54 PM
DGN: B4490_U1.dgn

MATCH LINE SEE SHEET UC-15
-DR1- STA. 13+75.00

MATCH LINE SEE SHEET UC-6
-Y3- STA. 21+80.00

MATCH LINE SEE SHEET UC-14
-Y3- STA. 27+20.00

PROP. 6' DIA. UTILITY MANHOLE
CONFLICT BOX 1
STA. 6+01.58, LINE A
6.16' LT. OF -DR1- STA. 14+06.57

PROP. 4' DIA.
UTILITY MANHOLE A4
STA. 4+84.93, LINE A
129.03' RT. OF -Y3- STA. 23+69.40

PROP. 290' - 8" D.I.
WATER LINE (LINE WL1)
SEE SHEET UC-20
FOR PROFILE

PROP.
148.26' - 12" D.I. SANITARY
GRAVITY SEWER (LINE A)
SEE SHEET UC-17 FOR PROFILE

PROP.
238.75' - 16" D.I. SANITARY
GRAVITY SEWER (LINE A)
SEE SHEET UC-17 FOR PROFILE

PROP. 94' - 30" ENCASEMENT PIPE
(SEE SHEET UC-17 FOR PROFILE)
(OPEN CUT)

PROP. 126.19' - 16" R.J.D.I.
SANITARY GRAVITY SEWER
(LINE A)
(SEE SHEET UC-17 FOR PROFILE)

PROP. 4' DIA.
UTILITY MANHOLE A2
STA. 1+20.00, LINE A
75.64' LT. OF -Y3- STA. 25+98.06

PROP. 6' DIA.
UTILITY MANHOLE A1
STA. 0+00.00, LINE A
192.26' LT. OF -Y3- STA. 26+32.18

PROP. 5' DIA.
UTILITY MANHOLE B8
STA. 11+06.63, LINE B
152.59' LT. OF -Y3- STA. 24+63.58

PROP. 6' DIA.
UTILITY MANHOLE B9
STA. 11+21.63, LINE B
139.42' LT. OF -Y3- STA. 24+72.36

PROP. 238.4' - 36" D.I. SANITARY
GRAVITY SEWER (LINE B)
(SEE SHEETS UC-18 & 19 FOR PROFILE)

PROP. 312' - ABANDON 36"
UTILITY PIPE (RCP SEWER)

PROP. 15.0' - 36" D.I. SANITARY
GRAVITY SEWER (LINE B)
(SEE SHEET UC-19 FOR PROFILE)

PROP. STEEL PILE PIER #2
STA. 0+97.00, LINE A

PROP. - REMOVE
WATER METER

PROP. - REMOVE
WATER METER

PROP. ABANDON
UTILITY MANHOLE

PROP. 62' - ABANDON 8"
UTILITY PIPE (VCP SEWER)

EX. 6" D.I. WATER LINE
TO REMAIN
IN SERVICE

PROP. 4' DIA.
UTILITY MANHOLE A3
STA. 2+46.19, LINE A
48.01' RT. OF -Y3- STA. 25+72.36

CUT EX. 8" D.I. WATER LINE
TIE TO EX. 8" VALVE W /
8" x 90 DEGREE BEND & COUPLING

Prepared by:

AECOM TECHNICAL SERVICES OF NORTH CAROLINA, INC.
701 CORPORATE CENTER DRIVE, SUITE 475, RALEIGH, NC 27607
919-854-6200 919-854-6259 (fax)
F - 0342