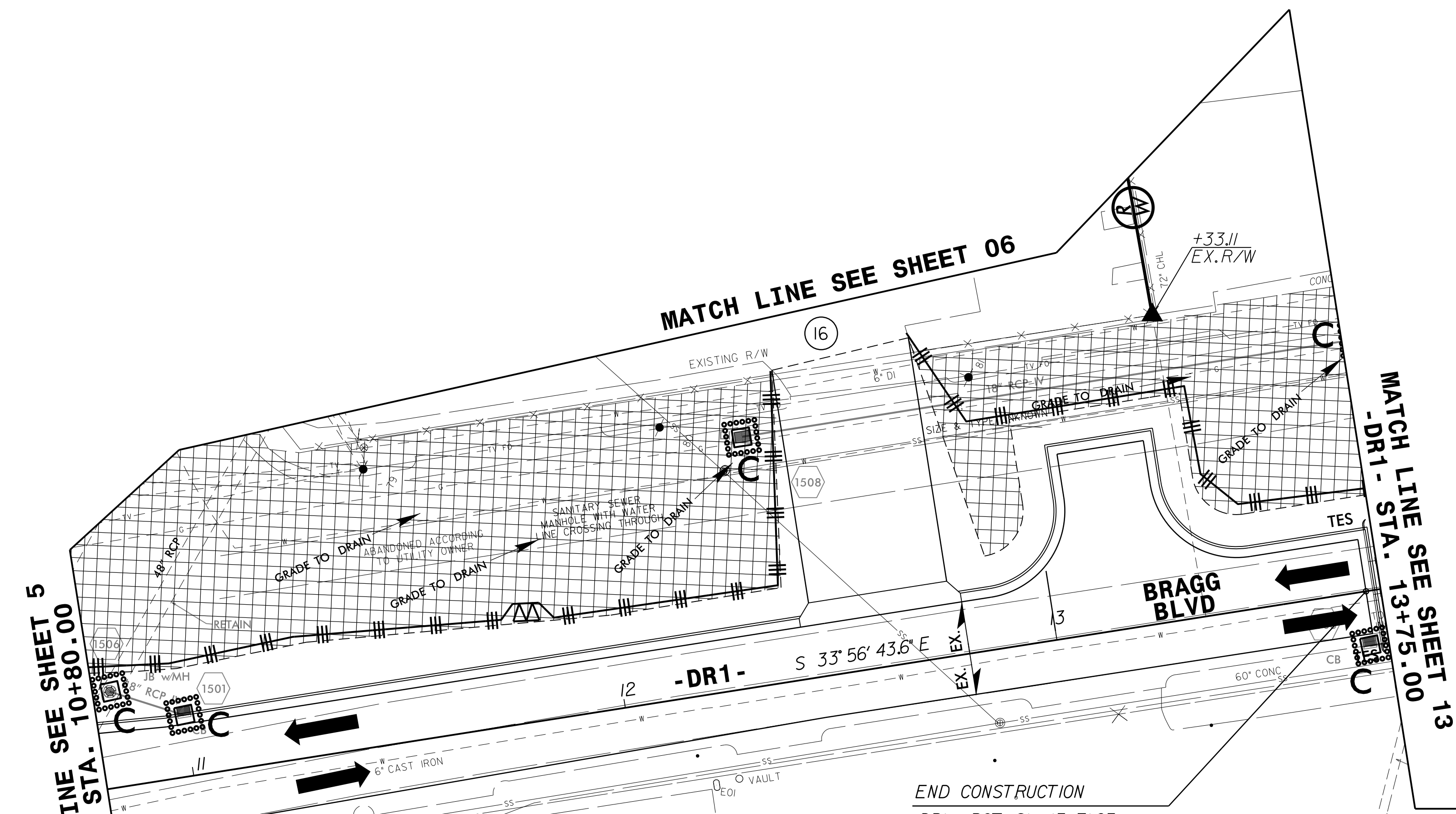


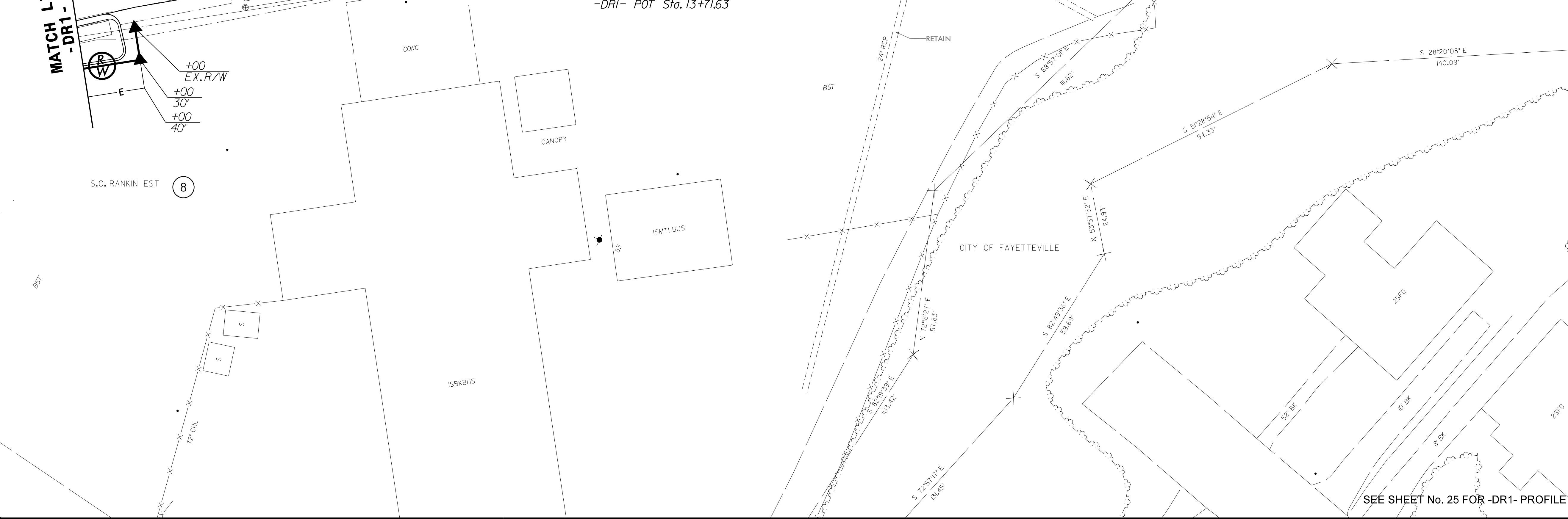
PROJECT REFERENCE NO.	SHEET NO.
B-4490	EC-34/CONST.15
RW SHEET NO.	
ROADWAY DESIGN ENGINEER	HYDRAULICS ENGINEER

NAD 83/NSRS 2007

8/17/99



NOTE:
 UTILIZE FABRIC INSERT INLET PROTECTION DEVICE IN LIEU OF ROCK INLET SEDIMENT TRAP TYPE C AT LOCATIONS WHERE RIST-C CANNOT BE PROPERLY INSTALLED OR IN AREAS WHERE RIST-C MAY POND WATER ON ROADWAY OPEN TO TRAFFIC.



31-AUG-2015 15:35
 I:\Projects\B4490-EC.psh_15.dgn
 shenry.dwg
 PENNY

SEE SHEET No. 25 FOR -DR1- PROFILE