

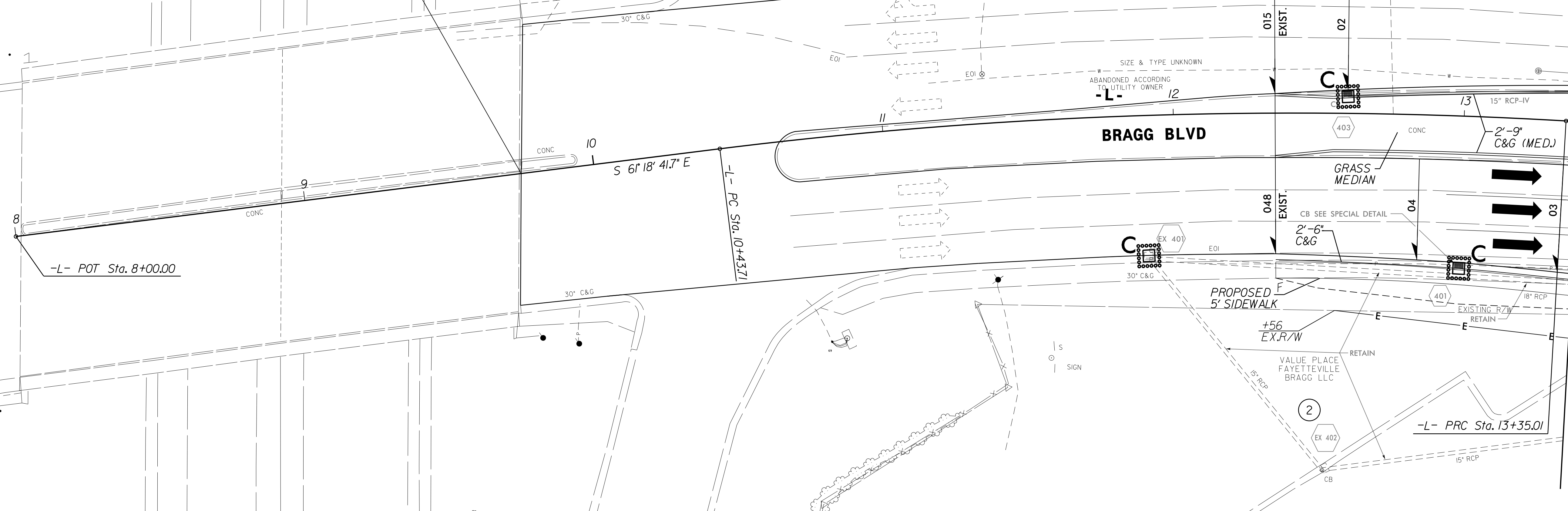
PROJECT REFERENCE NO. B-4490	SHEET NO. EC-23/CONST.4
RW SHEET NO.	
ROADWAY DESIGN ENGINEER	HYDRAULICS ENGINEER

BEGIN TIP PROJECT B-4490
-L- STA. 9+74.93

MARTIN LUTHER KING FRWY

NAD 83/NSRS 2007
S 00°11'40" E 51.00'
S 09°57'40" E 162.66'

LJ&T of FAYETTEVILLE,LLC
VAIL FAMILY LIMITED PARTNERSHIP



MATCH LINE SEE SHEET 5
-L- STA. 13+40.00

NOTE:
UTILIZE FABRIC INSERT INLET PROTECTION DEVICE IN LIEU OF ROCK INLET SEDIMENT TRAP TYPE C AT LOCATIONS WHERE RIST-C CANNOT BE PROPERLY INSTALLED OR IN AREAS WHERE RIST-C MAY POND WATER ON ROADWAY OPEN TO TRAFFIC.

8/17/99
 R:\AUG-2015\15:30\AUG2015\15:30\DWG\B4490\B4490-EC.psh_04.dgn
 REVISIONS
 1