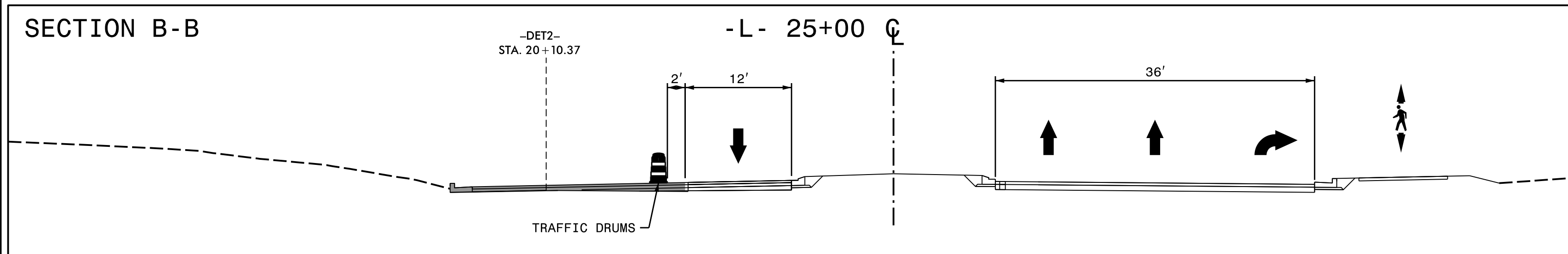
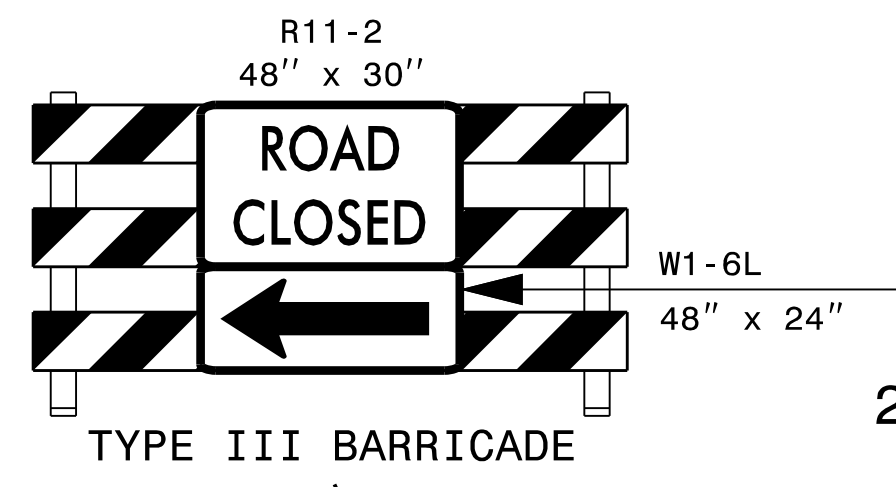


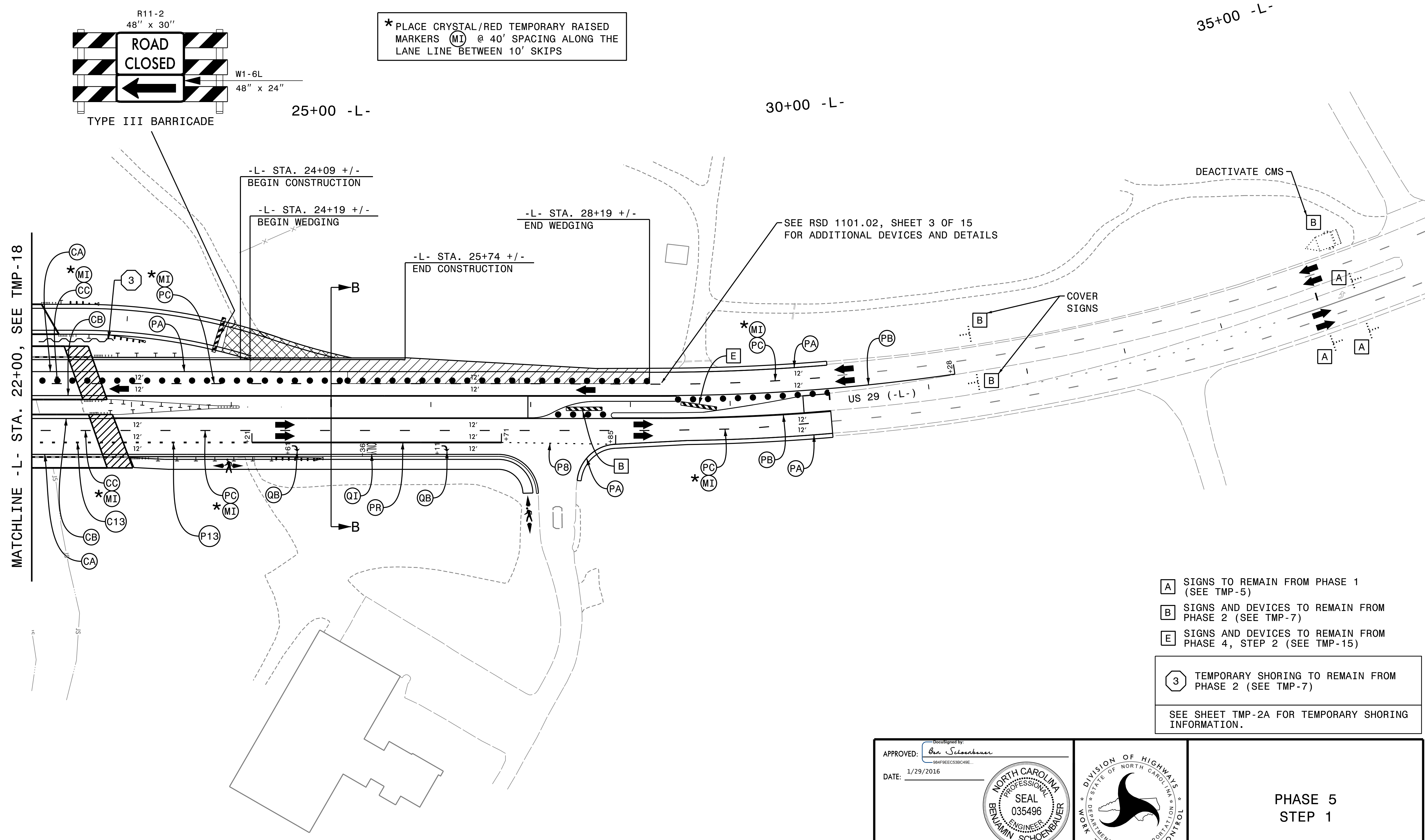
SECTION B-B



PROJ. REFERENCE NO. B-5123	SHEET NO. TMP-19
HDR Engineering, Inc. of the Carolinas 555 Fayetteville St., Suite 900 Raleigh, N.C. 27601 N.C.B.E.L.S. License Number: F-0116	



\* PLACE CRYSTAL/RED TEMPORARY RAISED MARKERS (MI) @ 40' SPACING ALONG THE LANE LINE BETWEEN 10' SKIPS



- A** SIGNS TO REMAIN FROM PHASE 1 (SEE TMP-5)
  - B** SIGNS AND DEVICES TO REMAIN FROM PHASE 2 (SEE TMP-7)
  - E** SIGNS AND DEVICES TO REMAIN FROM PHASE 4, STEP 2 (SEE TMP-15)
  - 3** TEMPORARY SHORING TO REMAIN FROM PHASE 2 (SEE TMP-7)
- SEE SHEET TMP-2A FOR TEMPORARY SHORING INFORMATION.

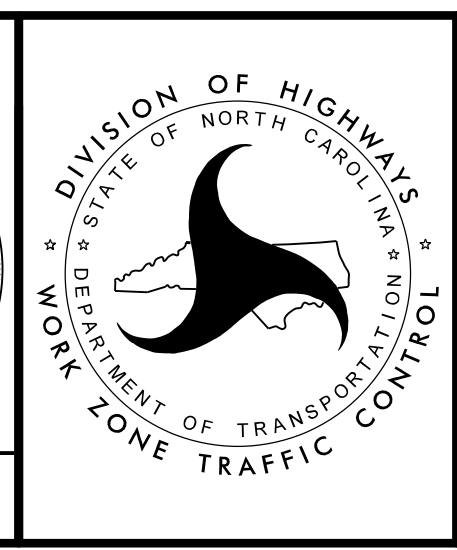
PLOT DRIVER: NCDOT\_color\_eng\_50.pit  
 USER: CHARNDEN  
 DATE: 1/29/2016  
 TIME: 9:45:37 AM  
 FILE: p:\WPAPP\TPA01\SouthEast-Tampa\Documents\000166\CON0079759\CON0104476\000000000272555\6.0.CAD.BIM\6.2.Work.In.Progress\TrafficControl\TCP\B-5123.TC.TMP.19-Phase5-2.dgn

APPROVED: *Ben Schoenauer*  
 DATE: 1/29/2016

DocuSigned by:  
 Ben Schoenauer  
 984FEECS3B049E...

**NORTH CAROLINA**  
 PROFESSIONAL  
 SEAL  
 035496  
 ENGINEER  
 BENJAMIN SCHOENAUER

**DOCUMENT NOT CONSIDERED FINAL  
 UNLESS ALL SIGNATURES COMPLETED**



**PHASE 5  
 STEP 1**