

**This electronic collection of documents is provided  
for the convenience of the user  
and is Not a Certified Document –**

**The documents contained herein were originally issued  
and sealed by the individuals whose names and license  
numbers appear on each page, on the dates appearing  
with their signature on that page.**

**This file or an individual page  
shall not be considered a certified document.**

**TIP PROJECT: B-5118**

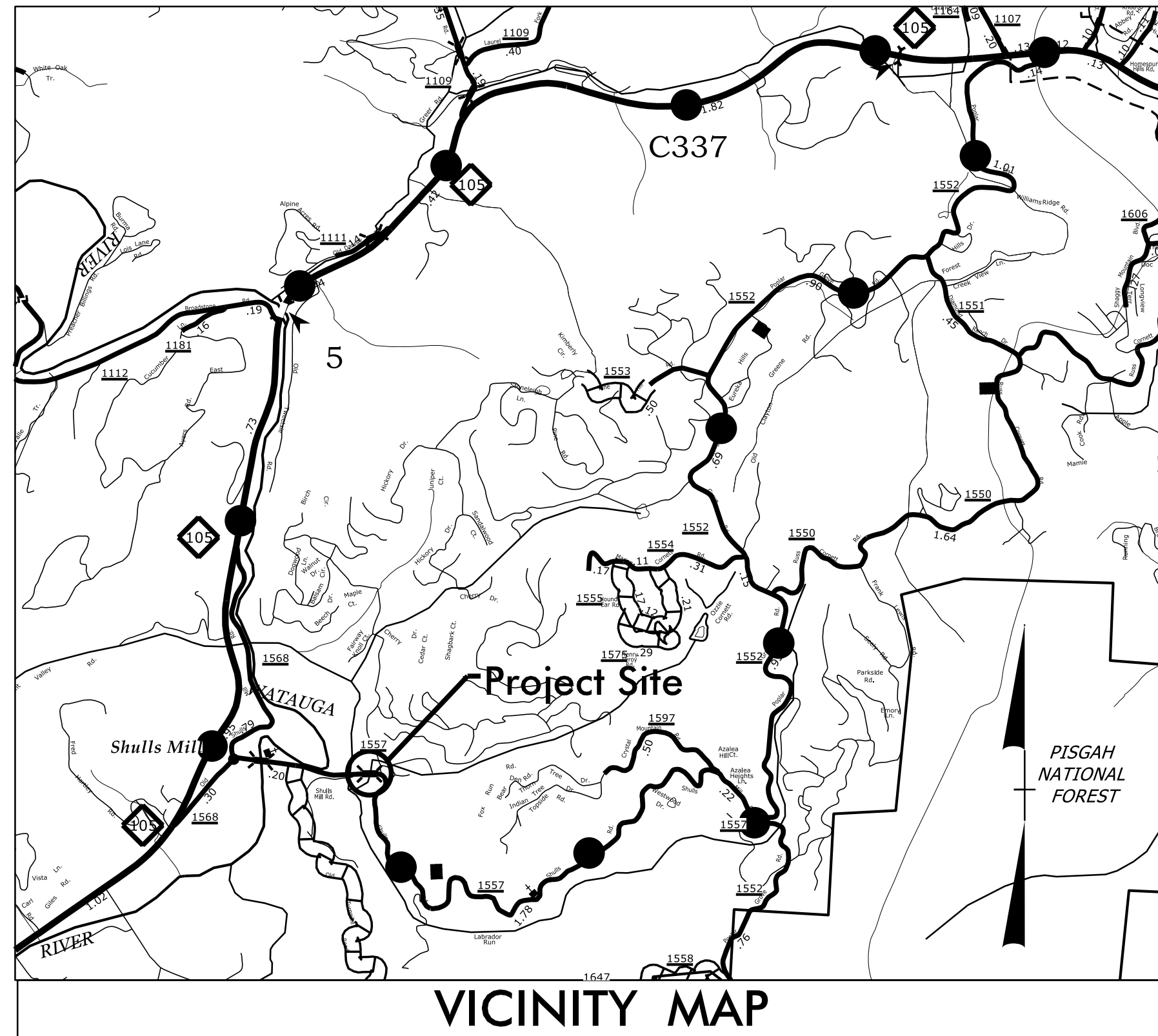
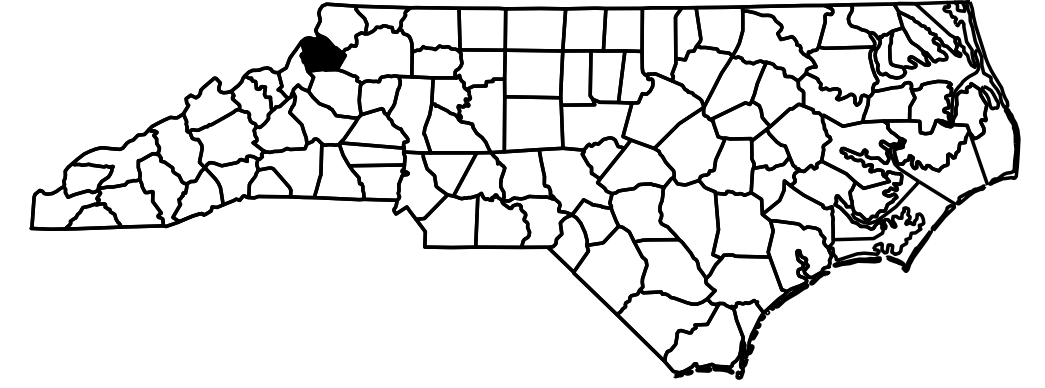
STATE OF NORTH CAROLINA  
DIVISION OF HIGHWAYS

STATE PROJECT REFERENCE NO.	SHEET NO.
B-5118	UO-1

**UTILITIES BY OTHERS PLAN  
WATAUGA COUNTY**

**LOCATION: BRIDGE #55 OVER LANCE CREEK ON SR 1557  
(SHULLS MILL RD.)**

**TYPE OF WORK: POWER DISTRIBUTION, TELEPHONE  
AND CABLE TELEVISION RELOCATION**



● OFFSITE DETOUR.

TO NC 105/  
BOONE

BEGIN TIP PROJECT B-5118  
-L- STA. 10 + 00.00

BEGIN BRIDGE  
-L- STA. 11 + 72.38

END BRIDGE  
-L- STA. 12 + 09.63

-L- SHULLS MILL RD

SR 1557

TO BLOWING ROCK

EMERGENCY ACCESS DETOUR  
-DET-

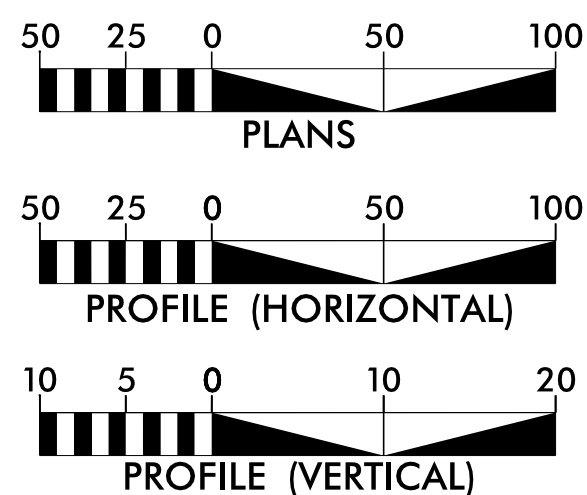
END TIP PROJECT B-5118  
-L- STA. 13 + 50.00

NC GRID  
NAD 83/CORS96

NOTES:  
CLEARING ON THIS PROJECT SHALL BE PERFORMED TO THE LIMITS ESTABLISHED BY METHOD II.  
THIS PROJECT IS NOT WITHIN ANY MUNICIPAL BOUNDARIES.  
TRAFFIC IS TO BE MAINTAINED WITH AN OFFSITE DETOUR.  
LOCAL EMERGENCY VEHICLE ACCESS DETOUR ONSITE.

**Michael Baker**  
INTERNATIONAL  
Michael Baker Engineering, Inc.  
8000 Regency Parkway, Suite 600  
Cary, NC 27518  
919-463-5488  
UTILITIES COORDINATION  
CONSULTANT  
*Brandy Creech*

**GRAPHIC SCALES**

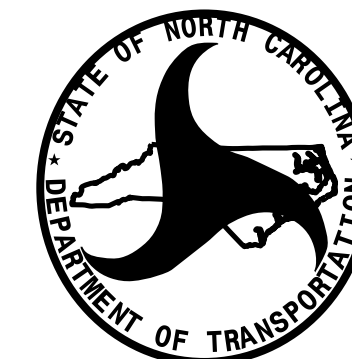


**INDEX OF SHEETS**

SHEET NO.	DESCRIPTION
UO-1	TITLE SHEET
UO-2	UTILITIES BY OTHERS PLAN SHEET

**UTILITY OWNERS ON PROJECT**

- (A) BLUE RIDGE EMC (POWER DISTRIBUTION)
- (B) SKYLINE (COMMUNICATIONS)
- (C) CHARTER (CABLE TELEVISION)
- (D) CAROLINA WATER SERVICES, INC. OF NC (WATER)



PREPARED IN THE OFFICE OF:  
DIVISION OF HIGHWAYS  
UTILITIES UNIT  
UTILITIES ENGINEERING  
1555 MAIL SERVICES CENTER  
RALEIGH, NC 27699-1555  
PHONE (919) 707-6690  
FAX (919) 250-4119

*Roger Worthington, P.E.* UTILITIES SECTION ENGINEER  
*Carl Barclay, P.E.* UTILITIES SQUAD LEADER PROJECT ENGINEER  
*Ali Kouchehi, P.E.* UTILITIES PROJECT DESIGNER

**UTILITIES BY OTHERS**

NOTE:  
ALL PROPOSED UTILITY WORK  
SHOWN ON THIS SHEET WILL  
BE DONE BY OTHERS

NAD 83

NOTE:  
A VISIBLE SLEEVE WILL BE ADDED TO THE  
EXISTING AND TEMPORARY POWER LINES  
DURING CONSTRUCTION

NOTE:  
PRIVATE UTILITIES WILL BE RELOCATED  
BY PROPERTY OWNER (HE CLUB, INC)  
PRIOR TO CONSTRUCTION

CONTACT:  
HE CLUB, INC.  
DON VANCE  
CHIEF OPERATING OFFICER/GENERAL MANAGER  
(828) 963-7535

PROP. 6" DIP WATER LINE  
IN 16" STEEL ENCASEMENT

NOTE:  
RISER POLE WILL REMAIN  
ACTIVE AT ALL TIMES

PROP. 6" DIP WATER LINE

PROP. TEL PED

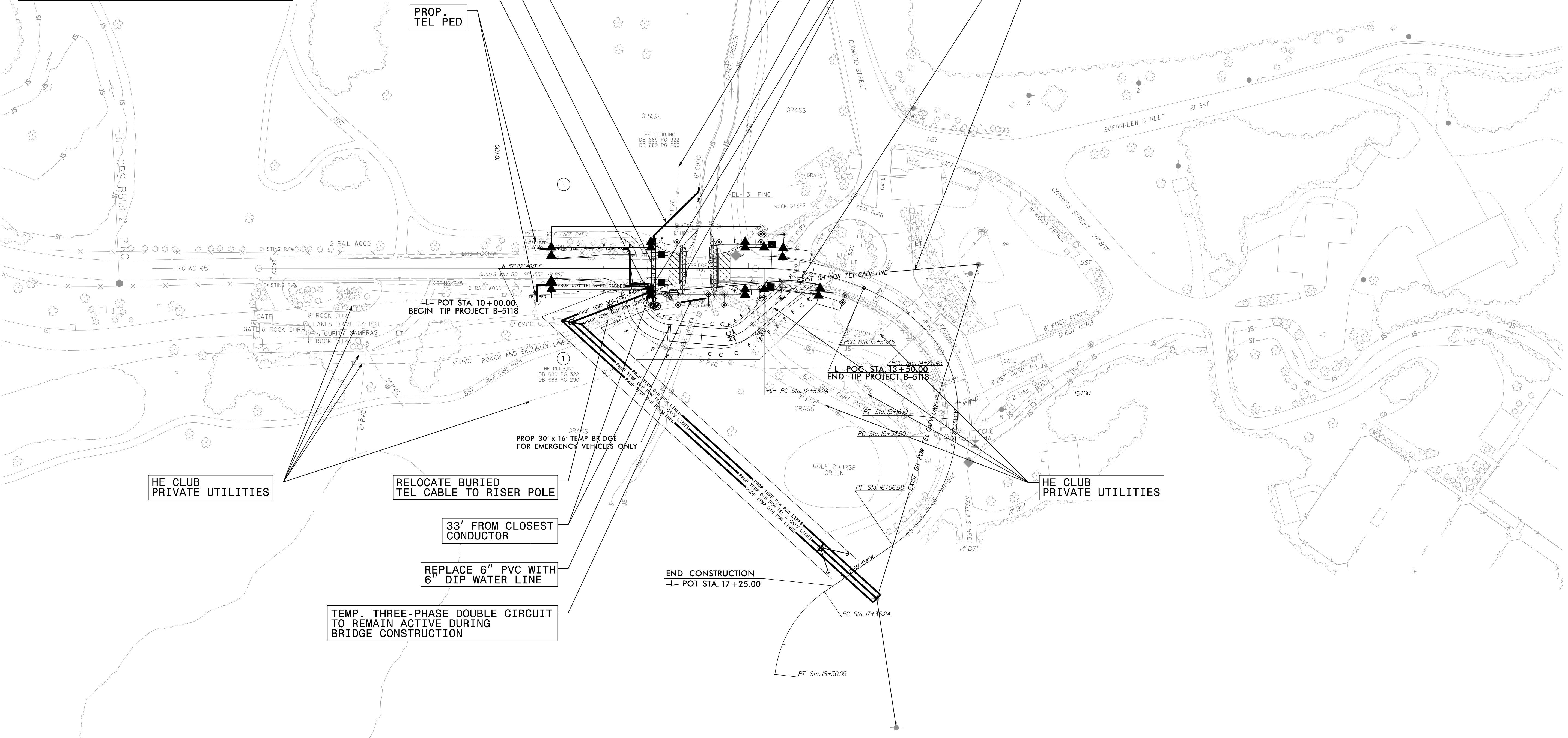
HE CLUB PRIVATE UTILITY

ABANDON EXIST. 6" WATER LINE

31' BETWEEN POLE AND STRUCTURE

EXIST. THREE-PHASE DOUBLE CIRCUIT TO REMAIN ACTIVE DURING DETOUR BRIDGE CONSTRUCTION

TRANSFER EXIST. TEL AND CATV LINES TO BREMC'S TEMP POLES



HE CLUB PRIVATE UTILITIES

RELOCATE BURIED TEL CABLE TO RISER POLE

33' FROM CLOSEST CONDUCTOR

REPLACE 6" PVC WITH 6" DIP WATER LINE

TEMP. THREE-PHASE DOUBLE CIRCUIT TO REMAIN ACTIVE DURING BRIDGE CONSTRUCTION

PROP 30' x 16' TEMP BRIDGE FOR EMERGENCY VEHICLES ONLY

END CONSTRUCTION  
-L- POT STA. 17 + 25.00

HE CLUB PRIVATE UTILITIES

REVISIONS

3/21/2016 9:34:08 AM  
 Y:\Projects\2016\03\B-5118\Utilities\Utilities.dwg  
 USER: crowsome

**Michael Baker**  
INTERNATIONAL  
Michael Baker Engineering, Inc.  
8000 Regency Parkway, Suite 600  
Cary, NC 27518  
919-463-5488