

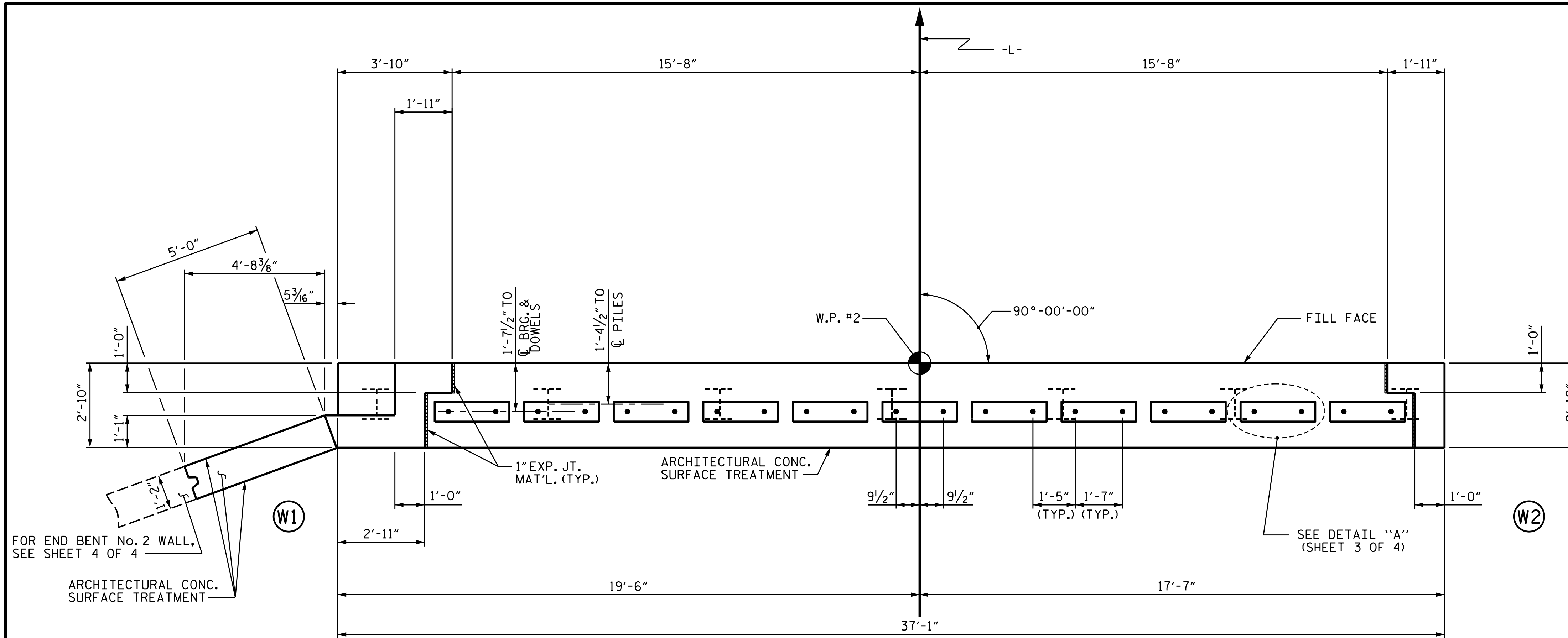
NOTES

STIRRUPS IN CAP MAY BE SHIFTED AS NECESSARY TO CLEAR DOWELS.

FOR PILE SPLICE DETAILS, SEE SHEET 3 OF 4.

FOR WING DETAILS, SEE SHEET 2 OF 4.

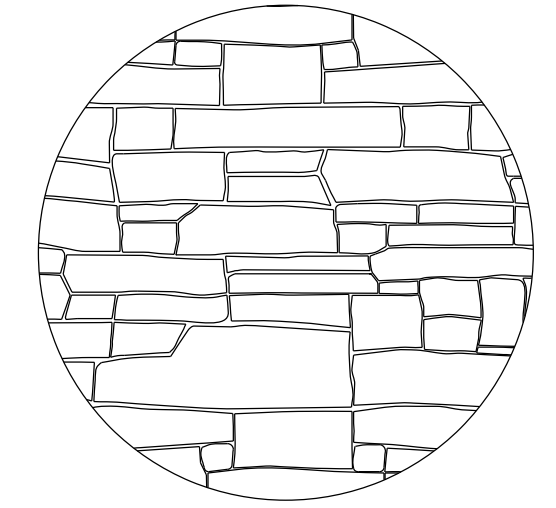
ARCHITECTURAL CONCRETE SURFACE TREATMENT SHALL BE APPLIED TO THE FRONT FACE OF THE CAP AND WINGS, AND TO THE TOP AND FILL FACE OF WING W1 AS DETAILED ON THE PLANS. FOR ARCHITECTURAL CONCRETE SURFACE TREATMENT, SEE SPECIAL PROVISIONS.



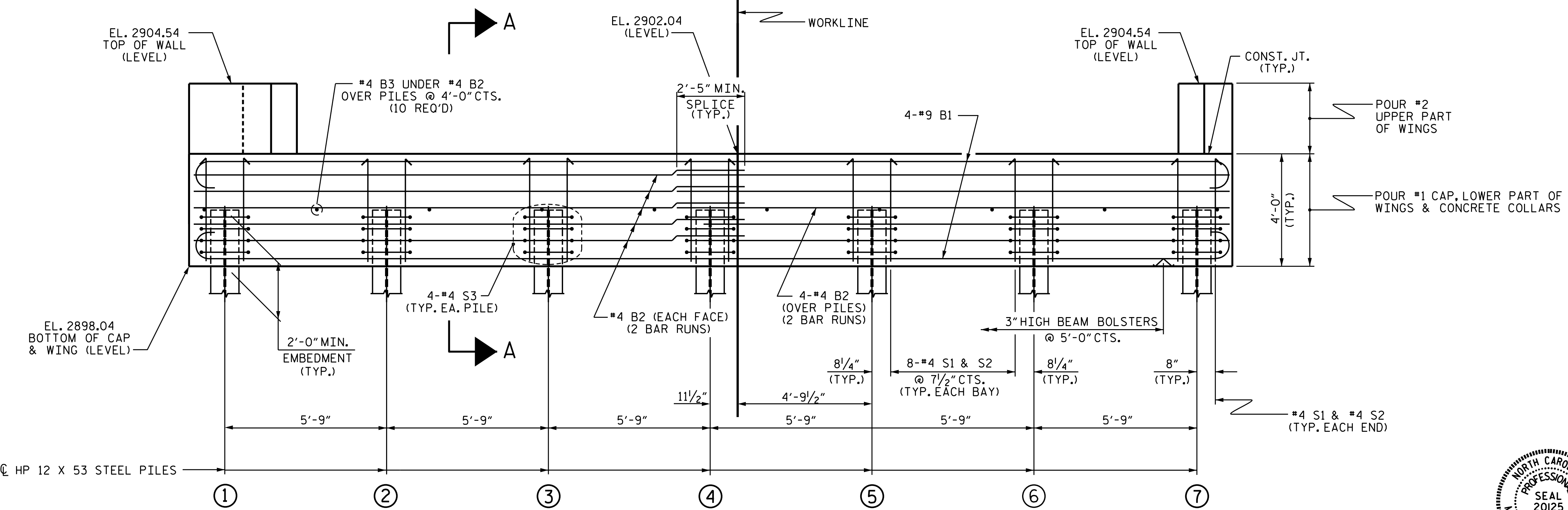
FOR END BENT No. 2 WALL, SEE SHEET 4 OF 4

ARCHITECTURAL CONC. SURFACE TREATMENT

PLAN



DETAIL OF ARCHITECTURAL CONCRETE SURFACE TREATMENT
SHOWING SIMULATED STONE "DRY STACK" PATTERN



ELEVATION

WINGS NOT SHOWN FOR CLARITY. FOR SECTION A-A, SEE SHEET 3 OF 4.
CONCRETE COLLARS FOR STEEL PILES NOT SHOWN IN PLAN AND ELEVATION VIEWS FOR CLARITY. SEE "CORROSION PROTECTION FOR STEEL PILES DETAIL", SHEET 3 OF 4.

PROJECT NO. B-5118
WATAUGA COUNTY
STATION: 11+91.00 -L-

SHEET 1 OF 4

STATE OF NORTH CAROLINA
DEPARTMENT OF TRANSPORTATION
RALEIGH

SUBSTRUCTURE
END BENT No. 2



DRAWN BY: W.J. HARRIS DATE: 2/16
CHECKED BY: B.N. GRADY DATE: 2/16
DESIGN ENGINEER OF RECORD: W.J. HARRIS DATE: 4/16

REVISIONS						SHEET NO.
NO.	BY:	DATE:	NO.	BY:	DATE:	TOTAL SHEETS
1			3			20
2			4			

DOCUMENT NOT CONSIDERED FINAL UNLESS ALL SIGNATURES COMPLETED

*****SYSTEM*****
*****DCN*****
*****USERNAME*****