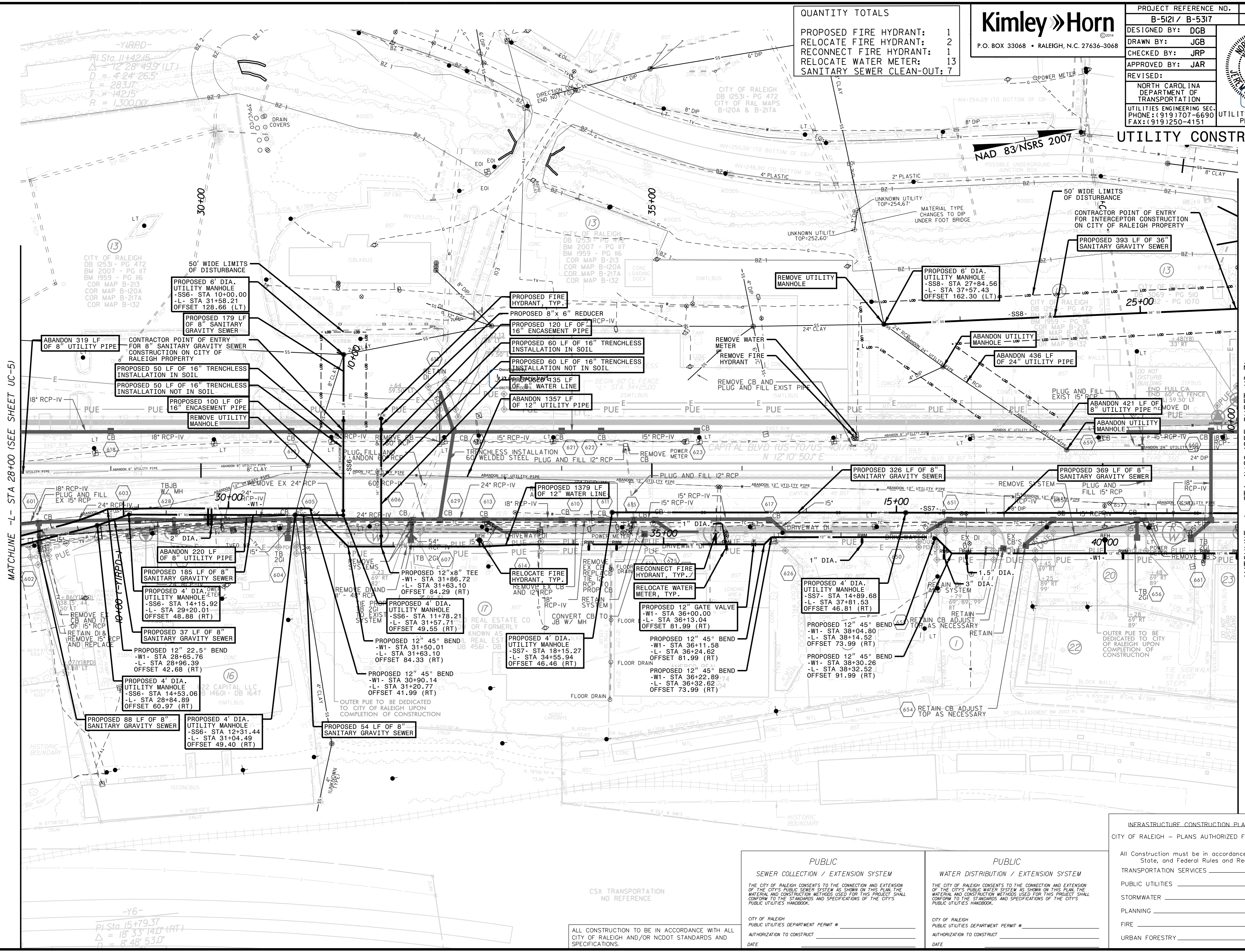


QUANTITY TOTALS	
PROPOSED FIRE HYDRANT:	1
RELOCATE FIRE HYDRANT:	2
RECONNECT FIRE HYDRANT:	1
RELOCATE WATER METER:	13
SANITARY SEWER CLEAN-OUT:	7

Kimley Horn
 P.O. BOX 33068 • RALEIGH, N.C. 27636-3068

PROJECT REFERENCE NO.	SHEET NO.
B-5121 / B-5317	UC-6
DESIGNED BY: DGB	
DRAWN BY: JGB	
CHECKED BY: JRP	
APPROVED BY: JAR	
REVISED:	
NORTH CAROLINA DEPARTMENT OF TRANSPORTATION UTILITIES ENGINEERING SEC. PHONE: (919) 707-6690 FAX: (919) 250-4151	

UTILITY CONSTRUCTION



REVISIONS

MATCHLINE -L- STA 28+00 (SEE SHEET UC-5)

MATCHLINE -L- STA 41+50 (SEE SHEET UC-7)

6/8/2016 K:\PAL_Roadway\01036256 - Capital Boulevard\Utilities\Engineering\UC\Pro\B5121_B5317_U1_r016_uc06.psd.dgn

-Y6-
 PI Sta 15+79.37
 Δ = 18° 33' 14.0 (RT)
 D = 8' 48' 53.0

ALL CONSTRUCTION TO BE IN ACCORDANCE WITH ALL CITY OF RALEIGH AND/OR NCDOT STANDARDS AND SPECIFICATIONS.

PUBLIC
 SEWER COLLECTION / EXTENSION SYSTEM

THE CITY OF RALEIGH CONSENTS TO THE CONNECTION AND EXTENSION OF THE CITY'S PUBLIC SEWER SYSTEM AS SHOWN ON THIS PLAN. THE MATERIAL AND CONSTRUCTION METHODS USED FOR THIS PROJECT SHALL CONFORM TO THE STANDARDS AND SPECIFICATIONS OF THE CITY'S PUBLIC UTILITIES HANDBOOK.

CITY OF RALEIGH
 PUBLIC UTILITIES DEPARTMENT PERMIT # _____
 AUTHORIZATION TO CONSTRUCT _____
 DATE _____

PUBLIC
 WATER DISTRIBUTION / EXTENSION SYSTEM

THE CITY OF RALEIGH CONSENTS TO THE CONNECTION AND EXTENSION OF THE CITY'S PUBLIC WATER SYSTEM AS SHOWN ON THIS PLAN. THE MATERIAL AND CONSTRUCTION METHODS USED FOR THIS PROJECT SHALL CONFORM TO THE STANDARDS AND SPECIFICATIONS OF THE CITY'S PUBLIC UTILITIES HANDBOOK.

CITY OF RALEIGH
 PUBLIC UTILITIES DEPARTMENT PERMIT # _____
 AUTHORIZATION TO CONSTRUCT _____
 DATE _____

INFRASTRUCTURE CONSTRUCTION PLAN APPROVAL
 CITY OF RALEIGH - PLANS AUTHORIZED FOR CONSTRUCTION

All Construction must be in accordance with all Local, State, and Federal Rules and Regulations.

TRANSPORTATION SERVICES _____

PUBLIC UTILITIES _____

STORMWATER _____

PLANNING _____

FIRE _____

URBAN FORESTRY _____