

**This electronic collection of documents is provided  
for the convenience of the user  
and is Not a Certified Document –**

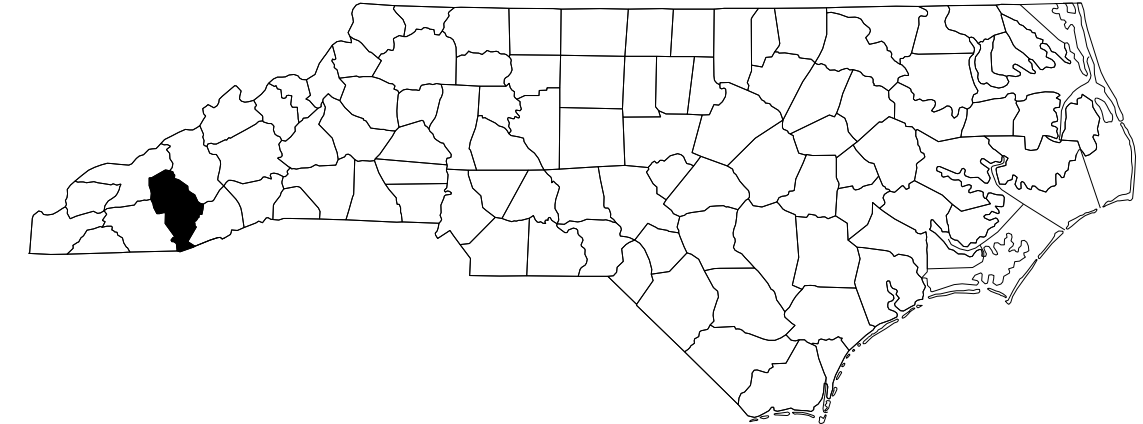
**The documents contained herein were originally issued  
and sealed by the individuals whose names and license  
numbers appear on each page, on the dates appearing  
with their signature on that page.**

**This file or an individual page  
shall not be considered a certified document.**

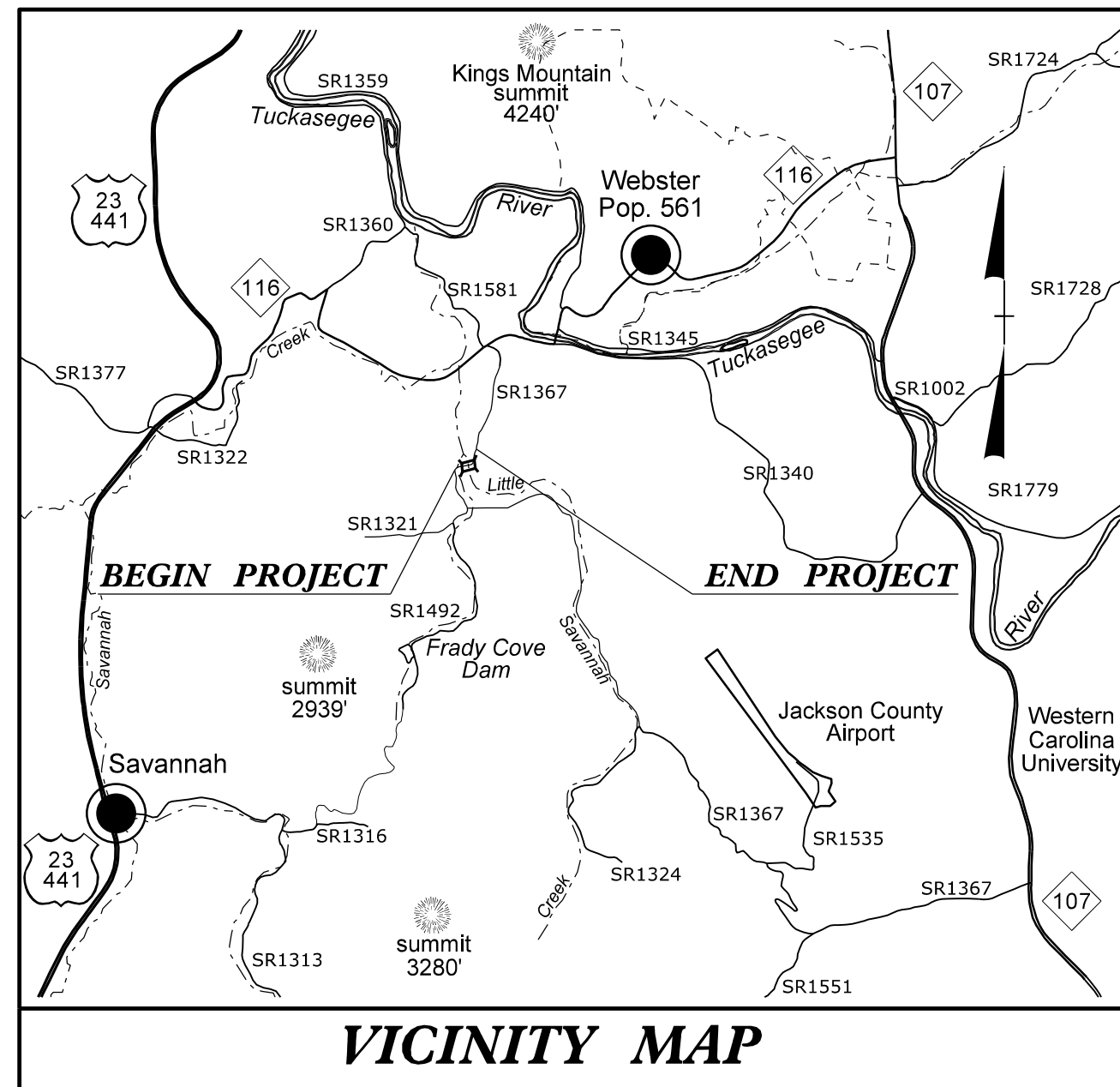
STATE OF NORTH CAROLINA  
DIVISION OF HIGHWAYS

**UTILITIES BY OTHERS PLAN  
JACKSON COUNTY**

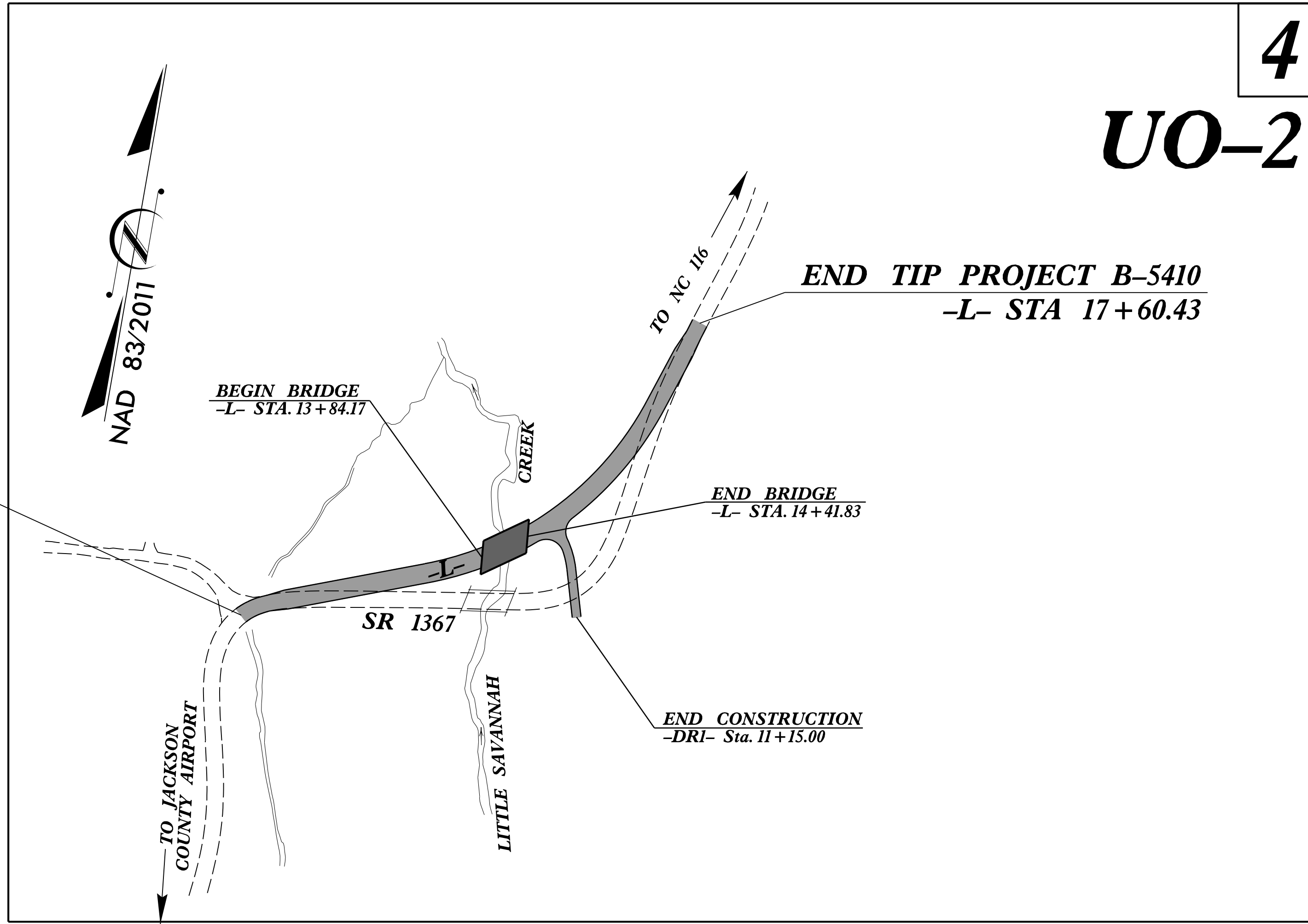
**LOCATION: BRIDGE 221 OVER LITTLE SAVANNAH CREEK ON SR 1367**  
**TYPE OF WORK: POWER DISTRIBUTION & COMMUNICATIONS RELOCATION**



**TIP PROJECT: B-5410**



**VICINITY MAP**



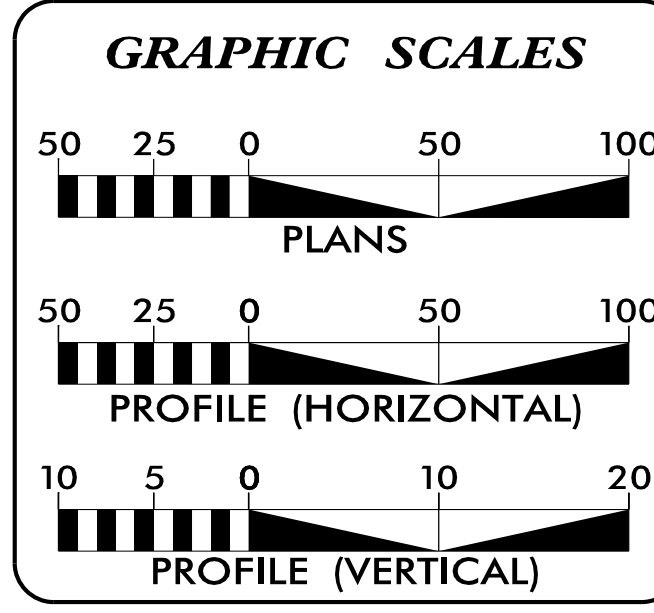
**BEGIN TIP PROJECT B-5410  
-L- STA 11+00.00**

**END TIP PROJECT B-5410  
-L- STA 17+60.43**

**BEGIN BRIDGE  
-L- STA. 13+84.17**

**END BRIDGE  
-L- STA. 14+41.83**

**END CONSTRUCTION  
-DRI- Sta. 11+15.00**



**INDEX OF SHEETS**

SHEET NO.	DESCRIPTION
UO-1	TITLE SHEET
UO-2	UBO PLAN SHEET

**UTILITY OWNERS ON PROJECT**

(A)	DUKE ENERGY (POWER DISTRIBUTION)
(B)	FRONTIER COMMUNICATIONS (COMMUNICATIONS)
(C)	BALSAM WEST (COMMUNICATIONS)

PREPARED IN THE OFFICE OF:

License No. C-2639  
7520 E. Independence Blvd., Suite 230 Charlotte, NC 28227

Todd E. Butner	UTILITY COORDINATION PROJECT MANAGER
Bill F. Black	PROJECT UTILITY COORDINATOR
James N. Arnold	PROJECT UTILITY DESIGNER

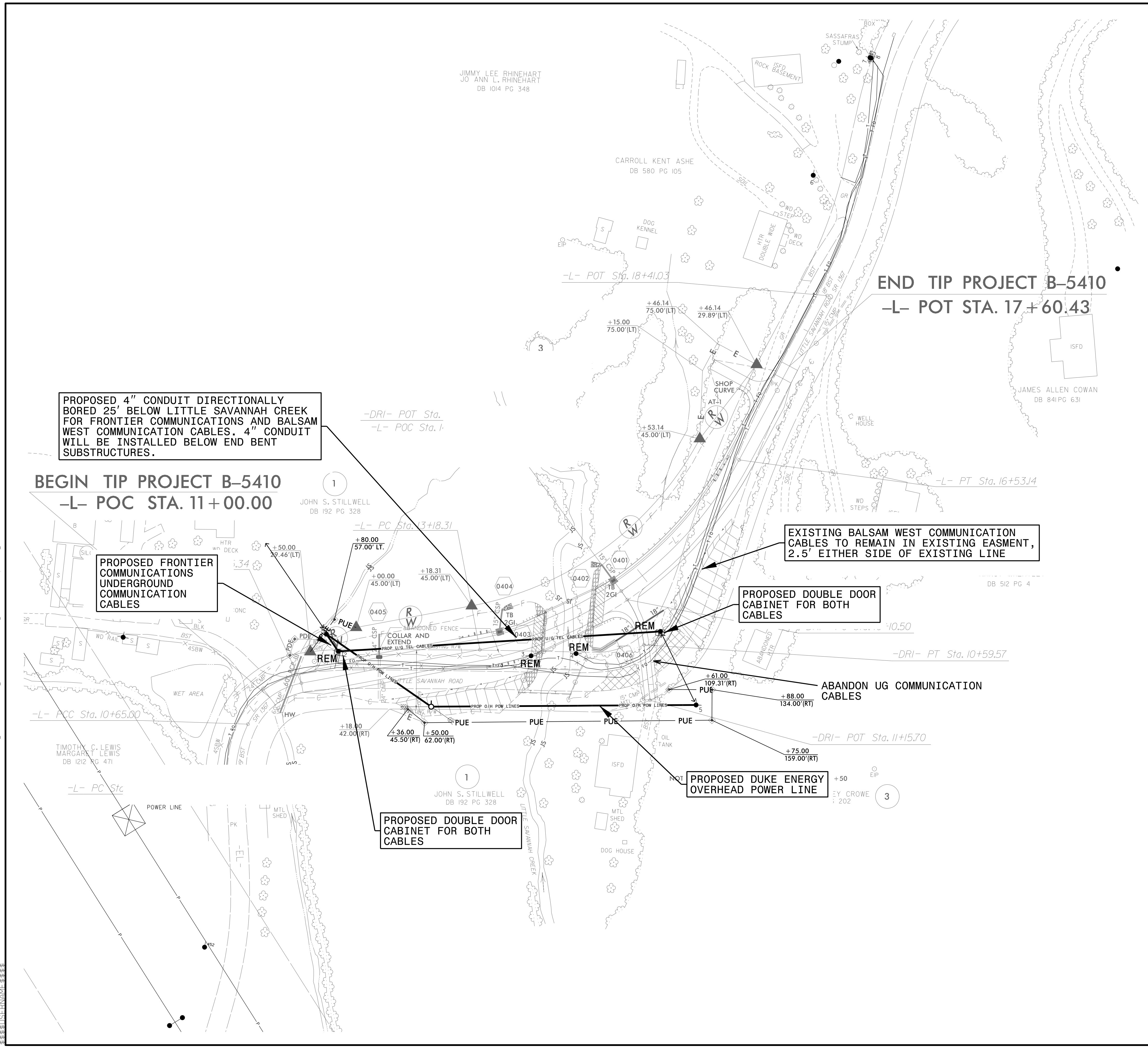
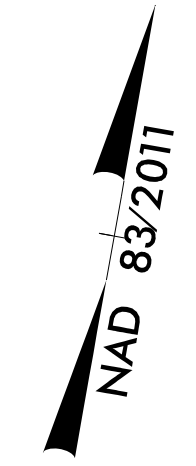
**DIVISION OF HIGHWAYS  
UTILITIES UNIT  
UTILITIES ENGINEERING**

1555 MAIL SERVICES CENTER  
RALEIGH NC 27699-1555  
PHONE (919) 707-6690  
FAX (919) 250-4151

Roger Worthington, P.E.	UTILITIES SECTION ENGINEER
Carl Barclay, P.E.	UTILITIES SQUAD LEADER PROJECT ENGINEER
Ali Kouchehi, P.E.	UTILITIES PROJECT DESIGNER

### UTILITIES BY OTHERS

**NOTE:**  
 ALL PROPOSED UTILITY WORK SHOWN ON THIS SHEET WILL BE DONE BY OTHERS. NO PAYMENT WILL BE MADE TO THE CONTRACTOR FOR PROPOSED UTILITY WORK SHOWN ON THIS SHEET.



PROPOSED 4" CONDUIT DIRECTIONALLY BORED 25' BELOW LITTLE SAVANNAH CREEK FOR FRONTIER COMMUNICATIONS AND BALSAM WEST COMMUNICATION CABLES. 4" CONDUIT WILL BE INSTALLED BELOW END BENT SUBSTRUCTURES.

**BEGIN TIP PROJECT B-5410**  
 -L- POC STA. 11+00.00

PROPOSED FRONTIER UNDERGROUND COMMUNICATION CABLES

PROPOSED DOUBLE DOOR CABINET FOR BOTH CABLES

EXISTING BALSAM WEST COMMUNICATION CABLES TO REMAIN IN EXISTING EASMENT, 2.5' EITHER SIDE OF EXISTING LINE

PROPOSED DOUBLE DOOR CABINET FOR BOTH CABLES

ABANDON UG COMMUNICATION CABLES

PROPOSED DUKE ENERGY OVERHEAD POWER LINE

JIMMY LEE RHINEHART  
 JO ANN L. RHINEHART  
 DB 1014 PG 348

CARROLL KENT ASHE  
 DB 580 PG 105

JOHN S. STILLWELL  
 DB 192 PG 328

JOHN S. STILLWELL  
 DB 192 PG 328

JAMES ALLEN COWAN  
 DB 841 PG 631

TIMOTHY C. LEWIS  
 MARGARET LEWIS  
 DB 1212 PG 471

C:\MAR-2016\1144\PROJECTS\2014\A2014206.00\NCDOT\_B-5410 - UC\Design\UBO\_Design\B5410\_ut.rdy4\_U02REV\_psh.dgn