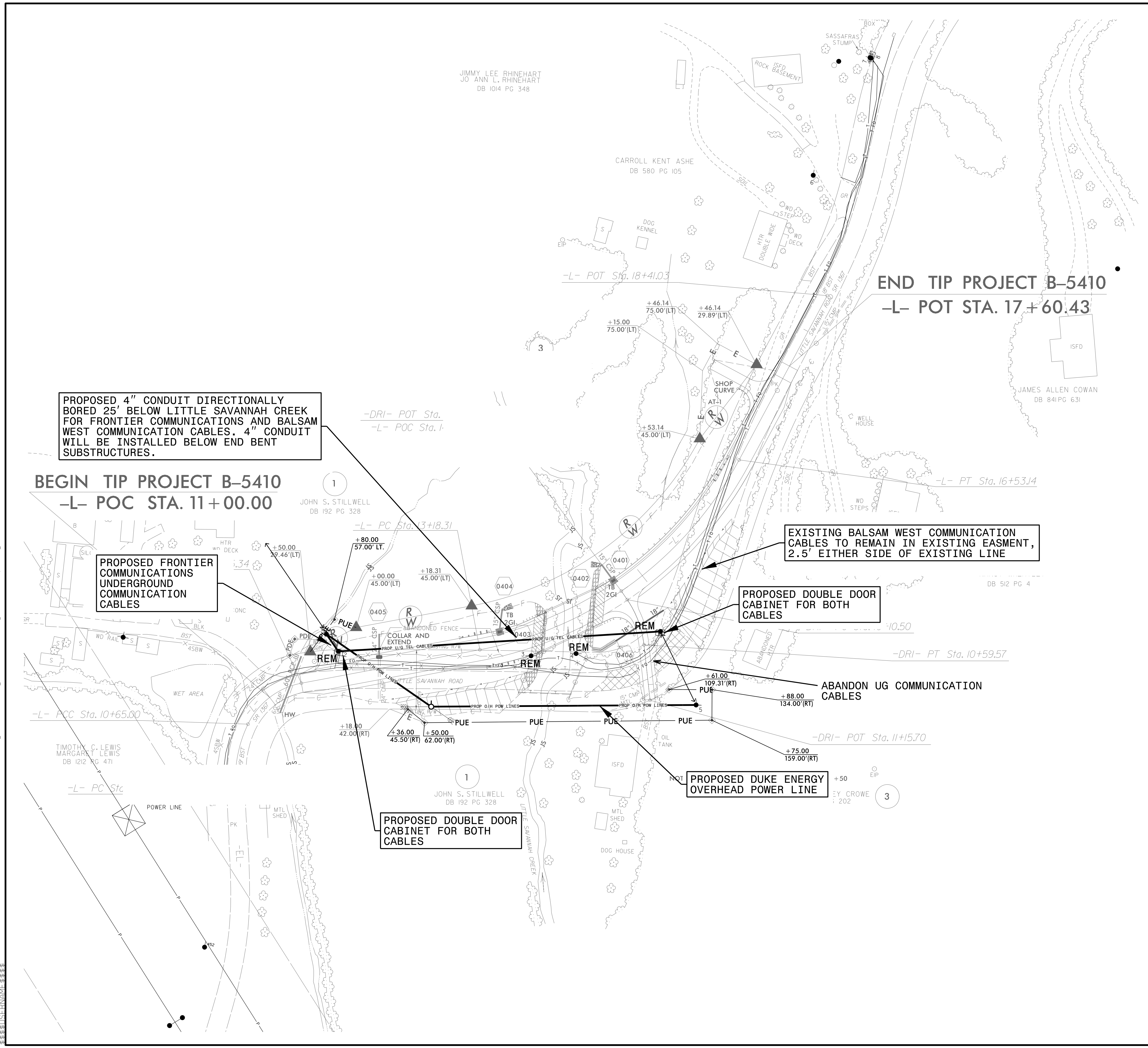
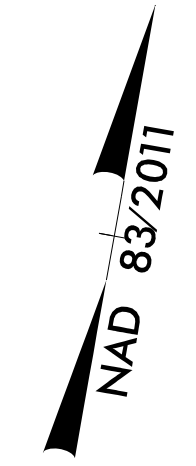


UTILITIES BY OTHERS

NOTE:
 ALL PROPOSED UTILITY WORK SHOWN ON THIS SHEET WILL BE DONE BY OTHERS. NO PAYMENT WILL BE MADE TO THE CONTRACTOR FOR PROPOSED UTILITY WORK SHOWN ON THIS SHEET.



PROPOSED 4" CONDUIT DIRECTIONALLY BORED 25' BELOW LITTLE SAVANNAH CREEK FOR FRONTIER COMMUNICATIONS AND BALSAM WEST COMMUNICATION CABLES. 4" CONDUIT WILL BE INSTALLED BELOW END BENT SUBSTRUCTURES.

BEGIN TIP PROJECT B-5410
-L- POC STA. 11+00.00

PROPOSED FRONTIER UNDERGROUND COMMUNICATION CABLES

EXISTING BALSAM WEST COMMUNICATION CABLES TO REMAIN IN EXISTING EASMENT, 2.5' EITHER SIDE OF EXISTING LINE

PROPOSED DOUBLE DOOR CABINET FOR BOTH CABLES

ABANDON UG COMMUNICATION CABLES

PROPOSED DUKE ENERGY OVERHEAD POWER LINE

PROPOSED DOUBLE DOOR CABINET FOR BOTH CABLES

JIMMY LEE RHINEHART
 JO ANN L. RHINEHART
 DB 1014 PG 348

CARROLL KENT ASHE
 DB 580 PG 105

JAMES ALLEN COWAN
 DB 841 PG 631

JOHN S. STILLWELL
 DB 192 PG 328

JOHN S. STILLWELL
 DB 192 PG 328

TIMOTHY C. LEWIS
 MARGARET LEWIS
 DB 1212 PG 471

C:\MAR-2016\1144\PROJECTS\2014\A2014206.00 NCDOT B-5410 - UC\Design\UBO Design\B5410-ut-rdy4-U02REV_psh.dgn