

PROJECT REFERENCE NO.	SHEET NO.
B-5142	EC-8/CONST.5
RW SHEET NO.	
ROADWAY DESIGN ENGINEER	HYDRAULICS ENGINEER

NOTE:  
 MAINTAIN IMPERVIOUS DIKES FOR SEDIMENT CONTAINMENT AS PRACTICABLE DURING CONSTRUCTION. DEWATER WORK SITE UTILIZING SPECIAL STILLING BASINS.

NOTE:  
 INSTALL AND MAINTAIN TURBIDITY CURTAIN IN AREAS WHERE RUNOFF IS NOT CONTAINED BY IMPERVIOUS DIKE.

Place Matting for Erosion Control on Slope as Work Allows.  
 Sta. 24+25 to Sta. 27+00 LT

Place Matting for Erosion Control on Slope as Work Allows.  
 Sta. 18+75 to Sta. 20+95 RT

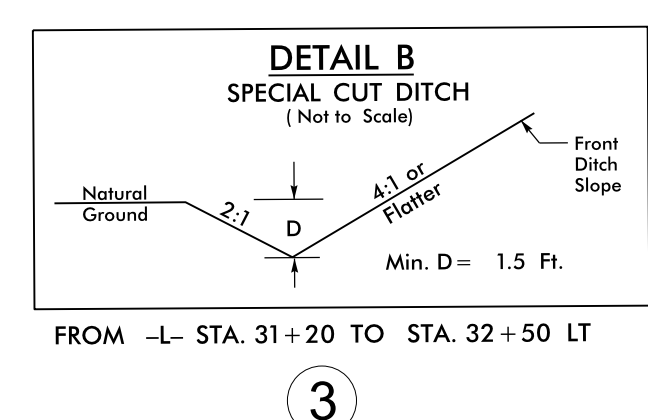
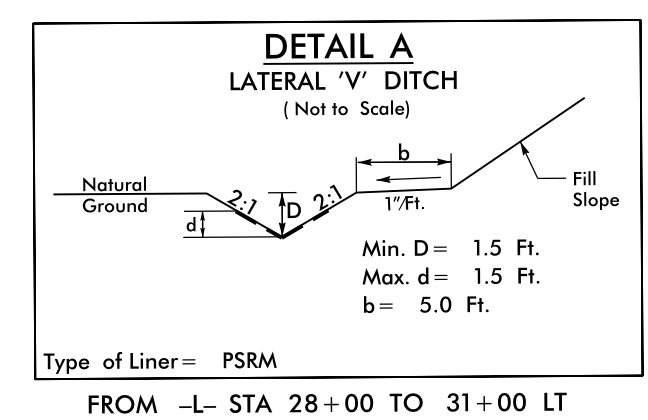
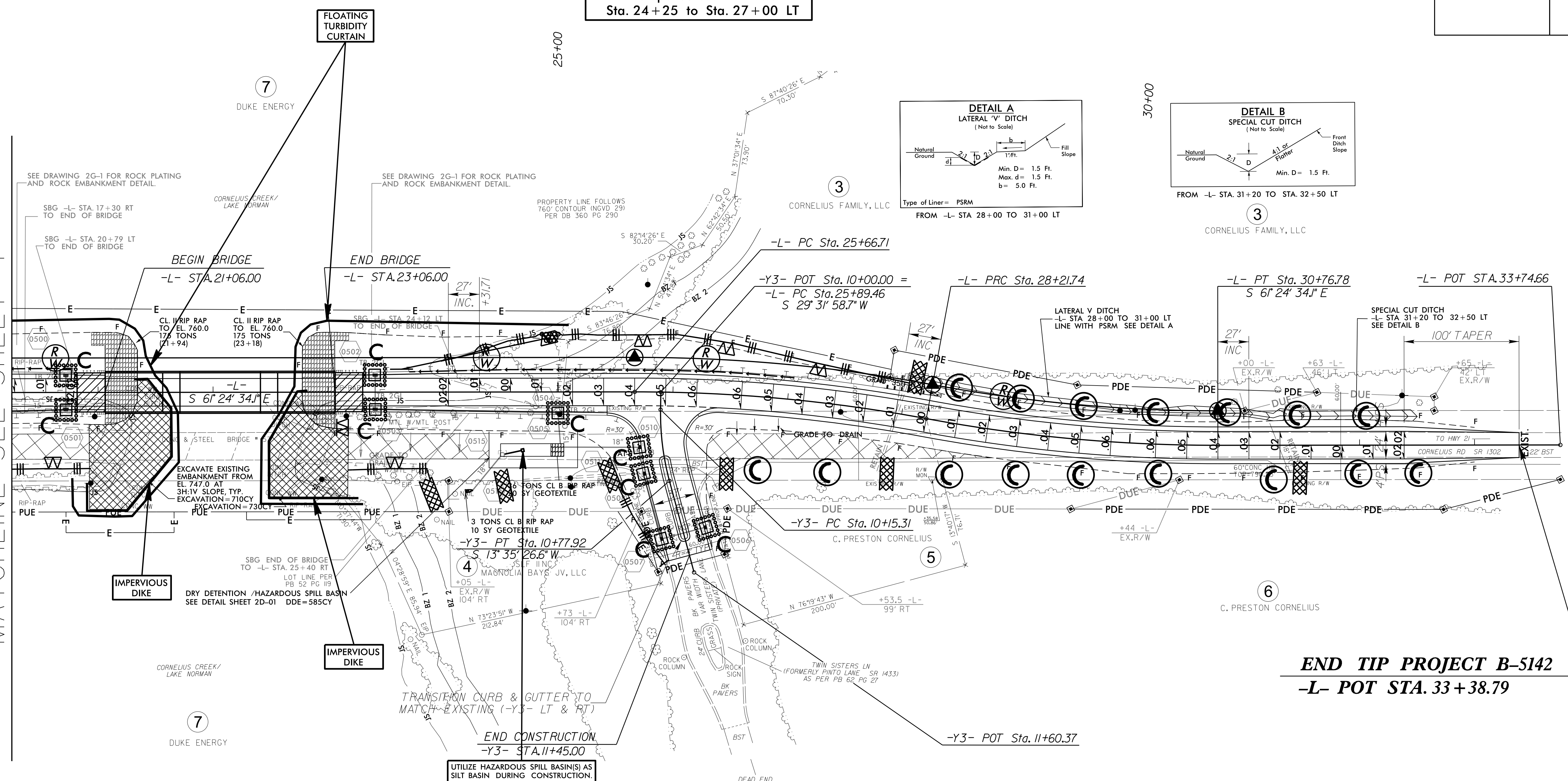
1.5 inch Skimmer with 1.375 inch Orifice Diameter ID 5.1

Place Matting for Erosion Control on Slope as Work Allows.  
 Sta. 23+00 to Sta. 26+00 RT

-L- STA. 20+25.00  
 MATCHLINE SEE SHEET 4

**END TIP PROJECT B-5142**  
**-L- POT STA. 33+38.79**

SEE SHEET 2D-01 FOR DRY DETENTION/HAZARDOUS SPILL BASIN DETAIL  
 SEE SHEET 6 FOR -L- PROFILE  
 SEE SHEET 7 FOR -Y3- PROFILE



8/17/99  
 05-OCT-2015 14:03  
 R:\Projects\B-5142-EC-pst5.dgn  
 REVISIONS  
 1  
 2  
 3  
 4  
 5  
 6  
 7