

GEOTECHNICAL ENGINEER

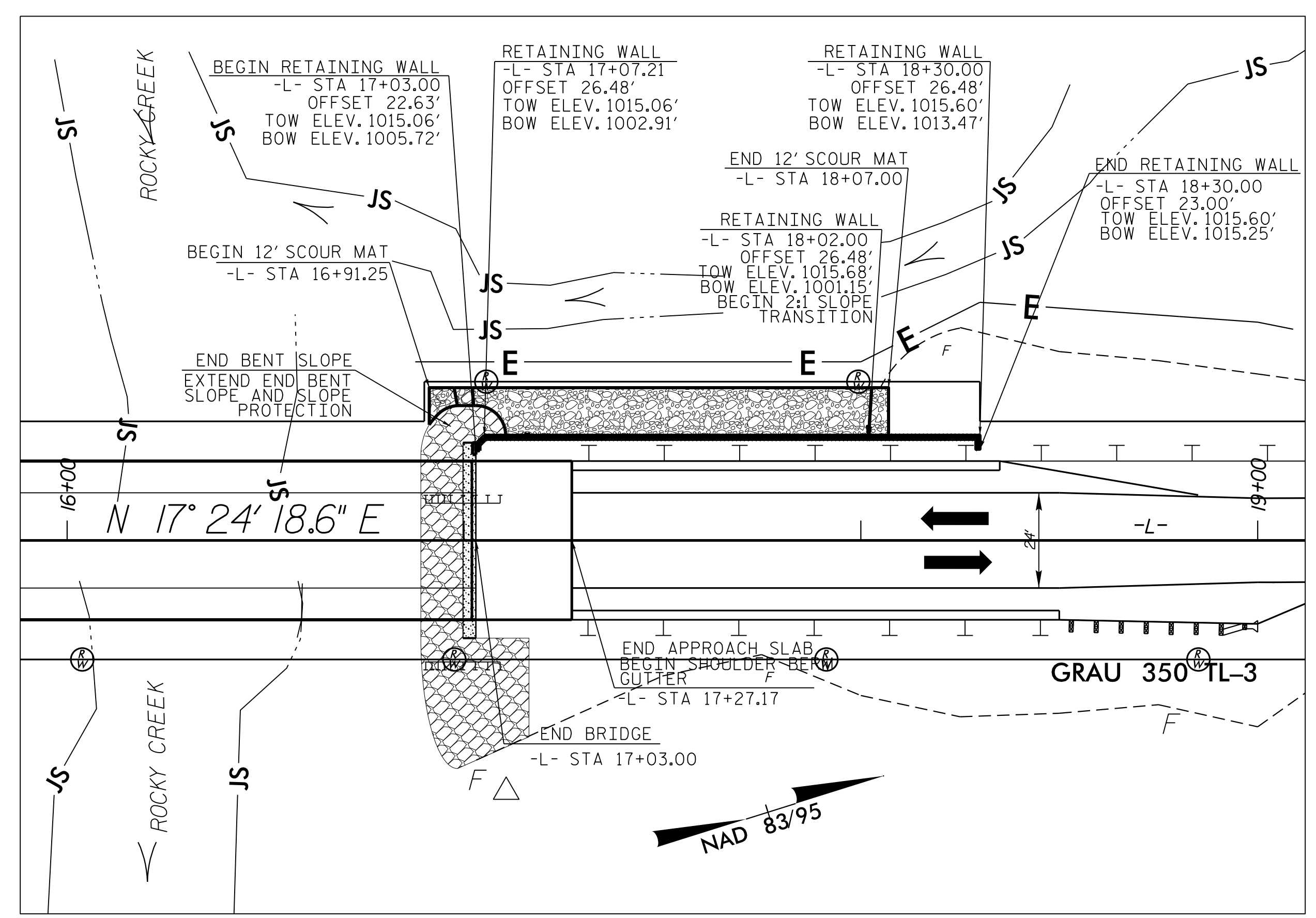
ENGINEER

SEAL 028893

Michael H. Stephens

4/18/2016

DOCUMENT NOT CONSIDERED FINAL UNLESS ALL SIGNATURES COMPLETED



-L- STA	OFFSET FROM CL (LEFT)	ELEV @ TOP OF WALL	* ELEV @ BOTTOM OF WALL	* DESIGN WALL HEIGHT	** TOTAL WALL HEIGHT "H"
17+03.00	22.6	1,015.16	1,005.72	9.44	11.44
17+03.00	26.5	1,015.16	1,005.72	9.44	12.44
17+10.14	26.5	1,015.13	1,000.96	14.17	17.17
18+02.00	26.5	1,015.68	1,001.15	14.53	17.53
18+30.00	26.5	1,015.60	1,013.47	2.13	4.13
18+30.00	23.0	1,358.01	1,342.10	0.00	2.00

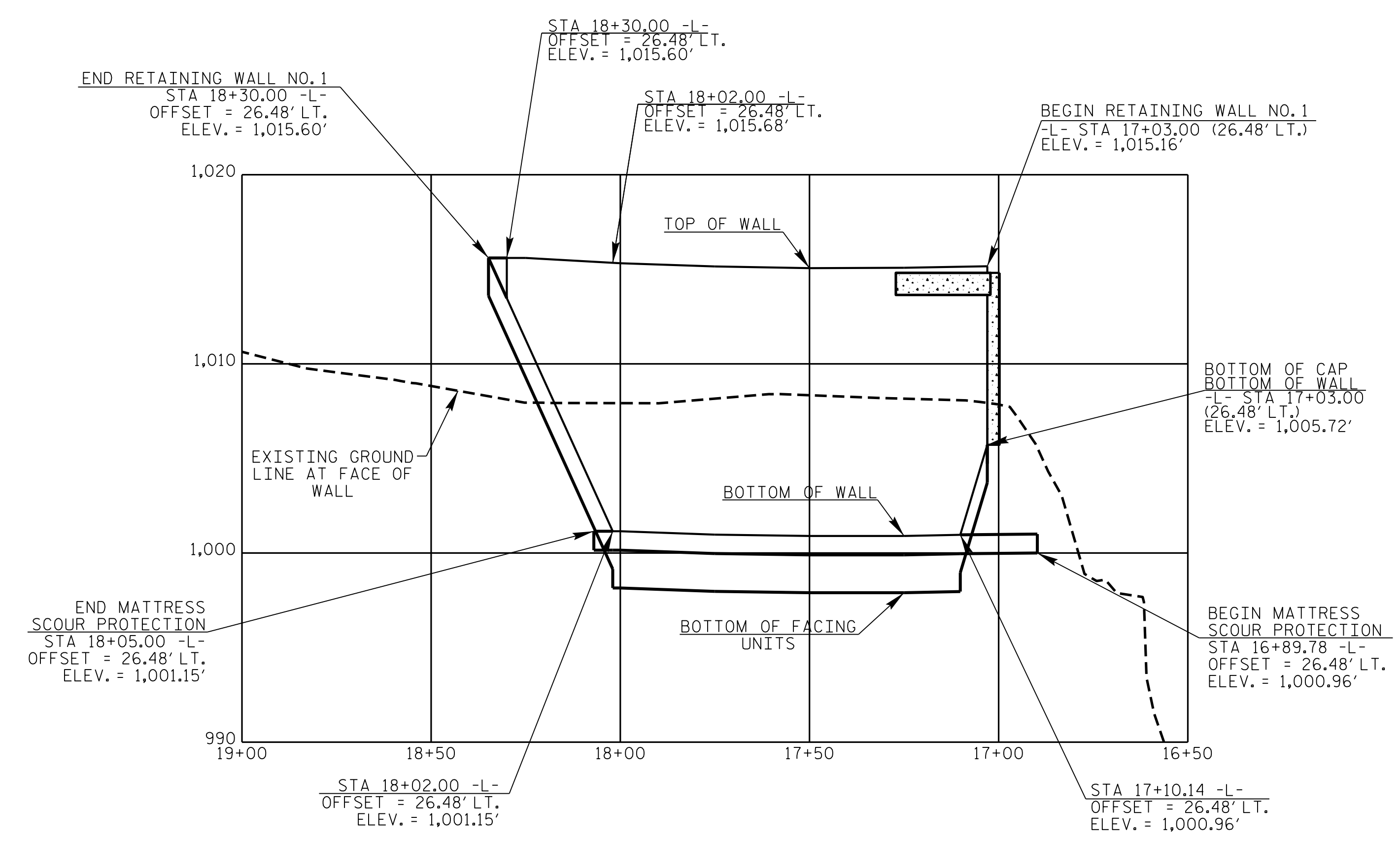
- * ADJUST TOP OF WALL ELEVATION AS NECESSARY TO MATCH THE TOP OF EXPRESSWAY GUTTER
- ** FOR DESIGN WALL HEIGHT "H" AND ADDITIONAL CONSTRUCTION DETAILS, SEE SHEET 3 OF 4

ESTIMATED WALL QUANTITY

RETAINING WALL	* 2,000 SQUARE FEET
----------------	---------------------

* WALL AREA IS MEASURED USING THE TOTAL HEIGHT "H"

NOTE:
1) FOR WIRE FACED MSE WALL TO END BENT NO. 2 CAP CONNECTION, SEE DETAIL A (SHEET 4 OF 4)



PROJECT NO.: B-4766

IREDELL COUNTY

STATION: 16+28.00 -L-

SHEET 1 OF 4

NORTH CAROLINA DEPARTMENT OF TRANSPORTATION DIVISION OF HIGHWAYS

GEOTECHNICAL ENGINEERING UNIT

NO.	BY	DATE	NO.	BY	DATE
1			3		
2			4		

WIRE FACED MSE WALL

SHEET NO. W-1

PREPARED BY: MHS DATE: 4-7-2016

REVIEWED BY: SCC/JDH DATE: 4-7-2016