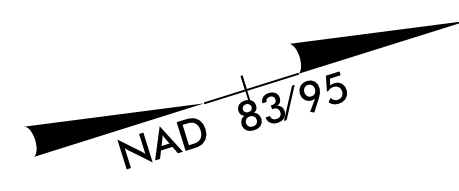


PROJECT REFERENCE NO.	SHEET NO.
B-4766	EC-5/CONST.4
RW SHEET NO.	
ROADWAY DESIGN ENGINEER	HYDRAULICS ENGINEER

NOTE:
UTILIZE TEMPORARY SEDIMENT BASIN OR SPECIAL STILLING BASIN(S) AS STILLING BASIN WHERE APPLICABLE.

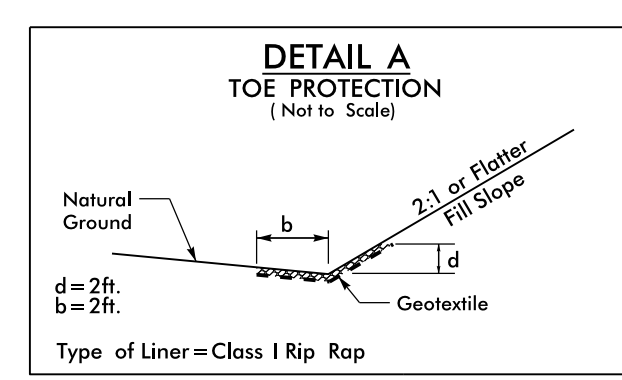
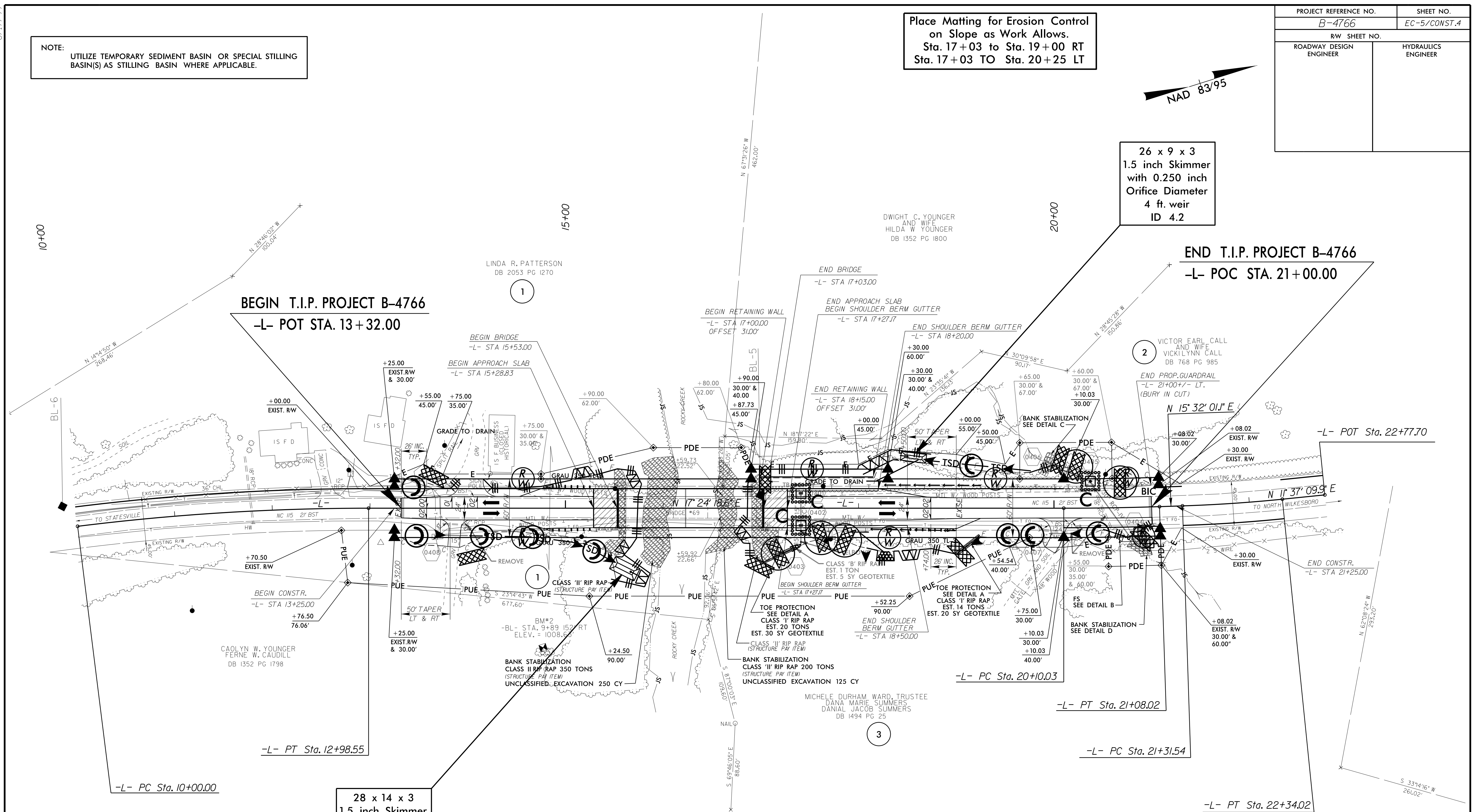
Place Matting for Erosion Control
on Slope as Work Allows.
Sta. 17+03 to Sta. 19+00 RT
Sta. 17+03 TO Sta. 20+25 LT



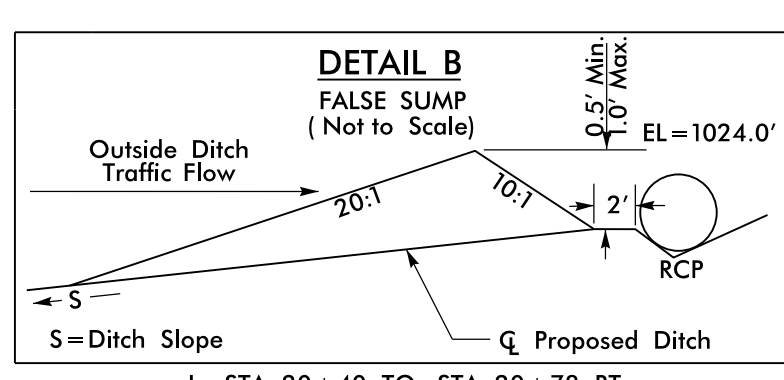
26 x 9 x 3
1.5 inch Skimmer
with 0.250 inch
Orifice Diameter
4 ft. weir
ID 4.2

28 x 14 x 3
1.5 inch Skimmer
with 0.375 inch
Orifice Diameter
4 ft. weir
ID 4.1

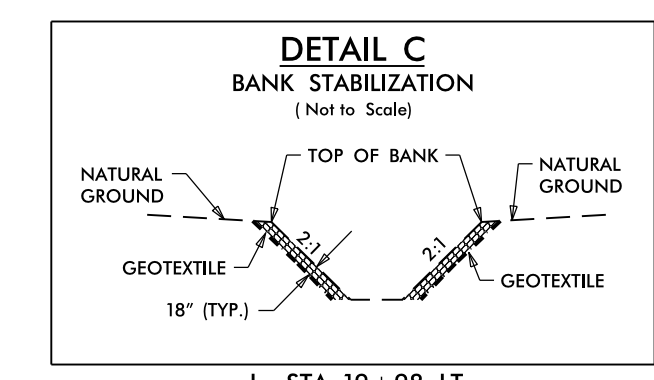
Place Matting for Erosion Control
on Slope as Work Allows.
Sta. 15+00 to Sta. 15+60



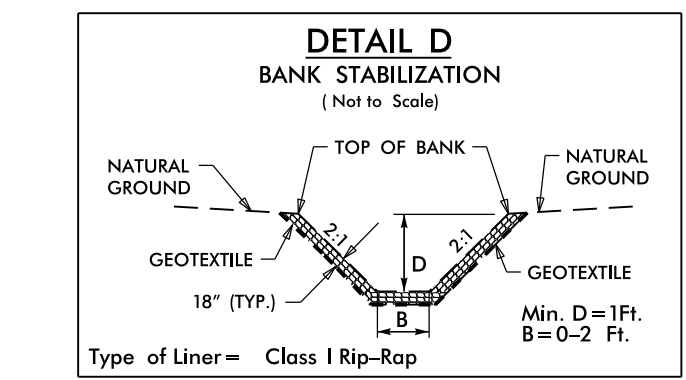
Type of Liner = Class I Rip Rap
-L- STA. 17+00 TO STA. 17+40 RT
-L- STA. 19+00 TO STA. 19+25 RT



-L- STA. 20+40 TO STA. 20+78 RT



-L- STA. 19+98 LT
12 TONS CL '1' RIP RAP, 30 SY GEOTEXTILE, DDE=10CY



-L- STA. 20+80 RT, S=6.4%, L=25'
28 TONS CL '1' RIP RAP, 55 SY GEOTEXTILE, DDE=20CY

8/17/99
24-FEB-2016 10:46 AM
R:\Environmental\Design\B4766.EC.PSH.4.dgn
AT:RENY-265783