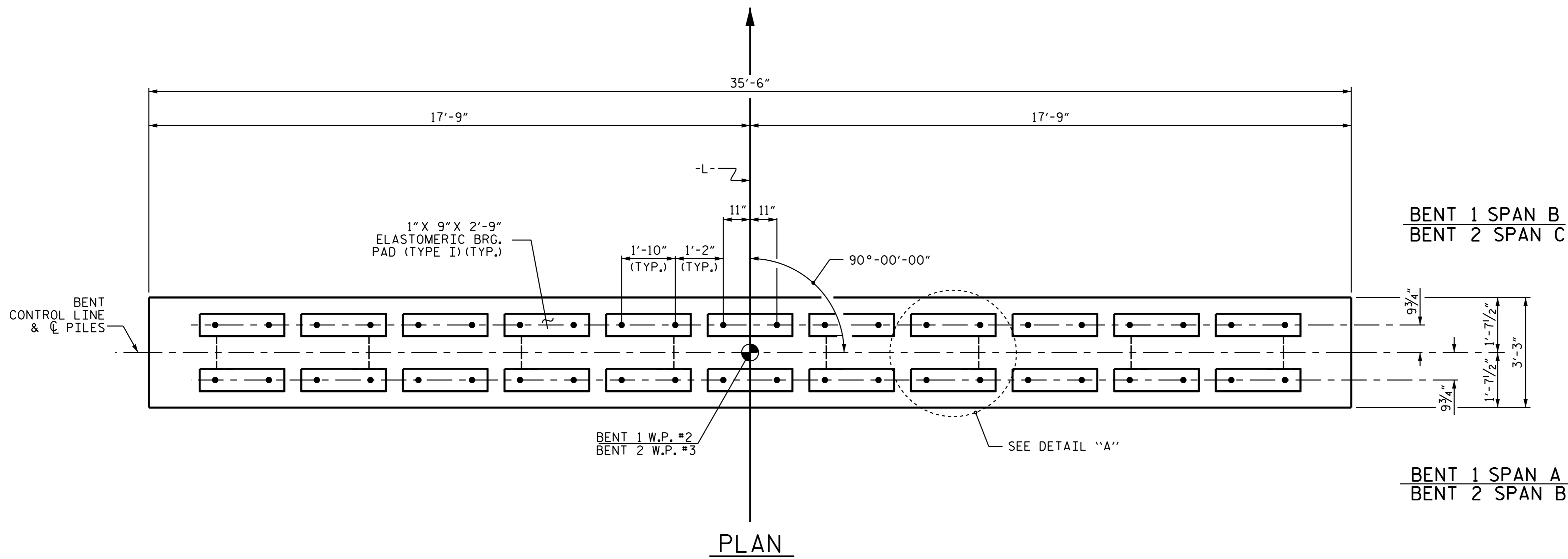


NOTES

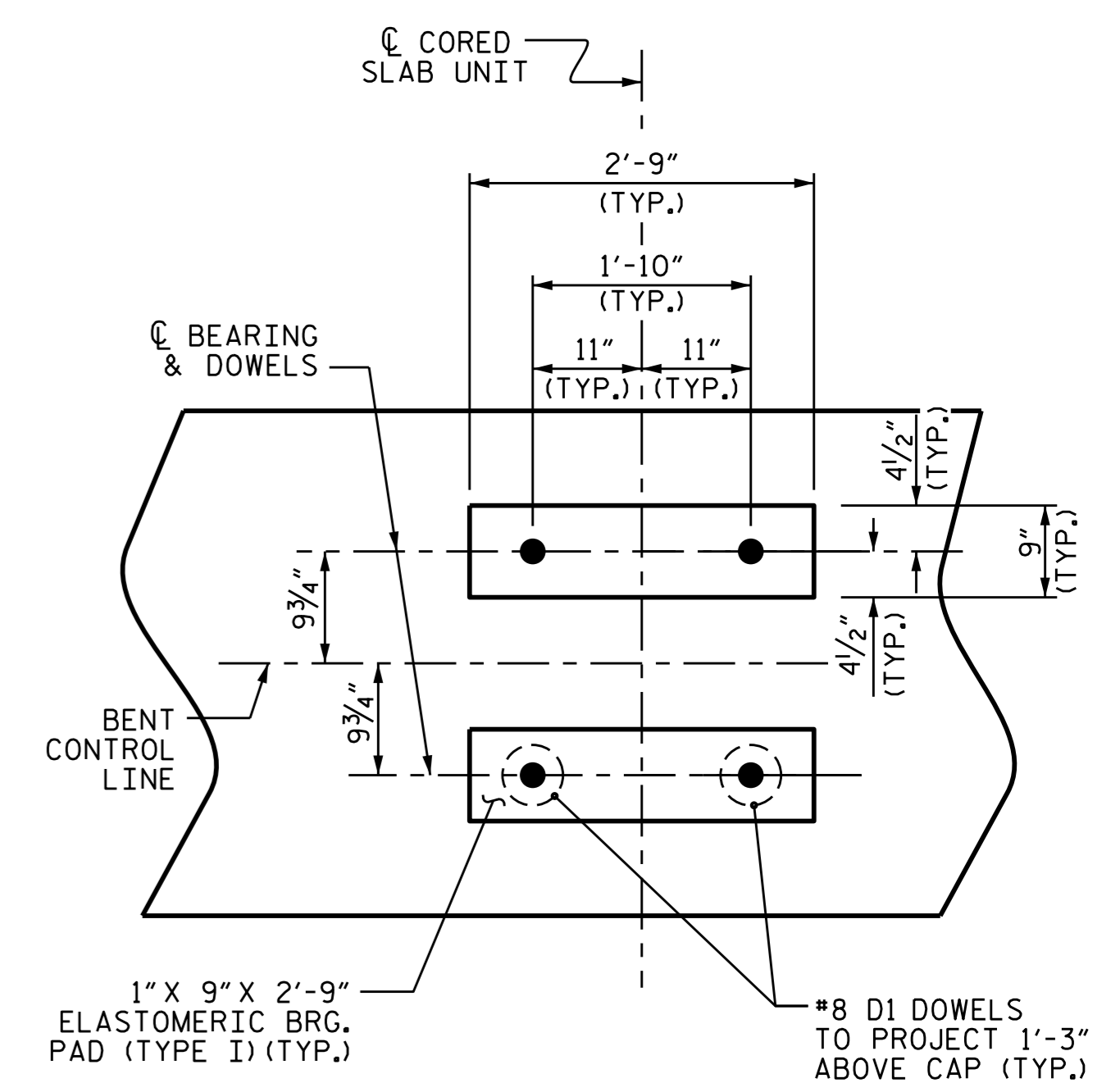
STIRRUPS IN CAP MAY BE SHIFTED AS NECESSARY TO CLEAR DOWELS.

★ INVERT ALTERNATE STIRRUPS.

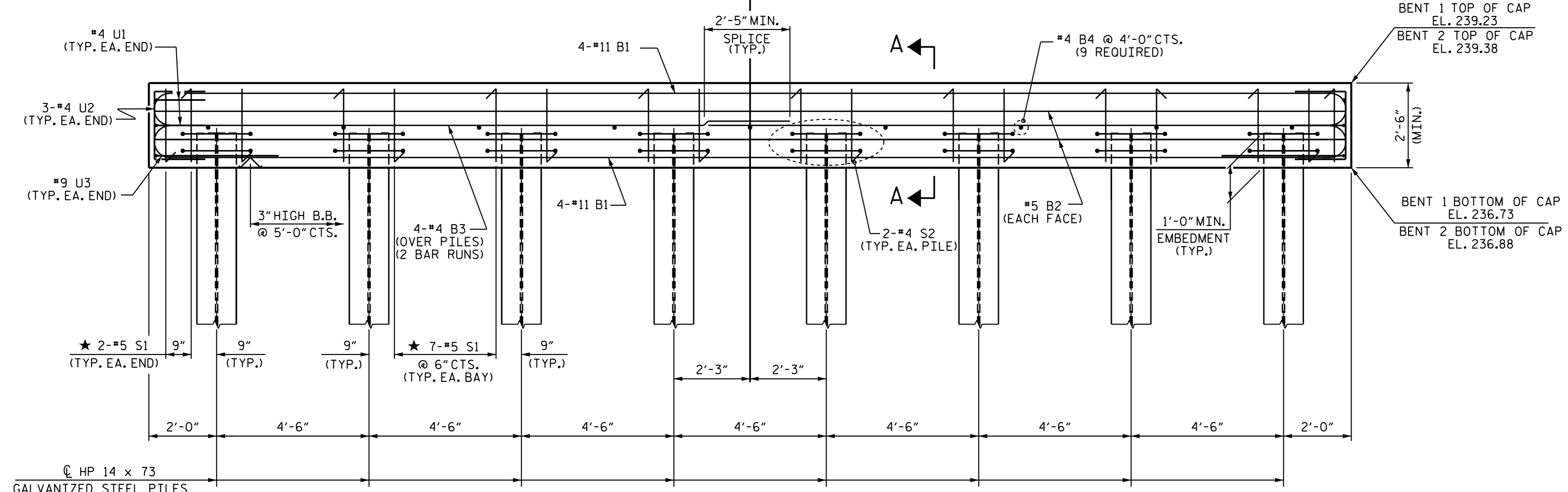
GALVANIZE THE TOP OF EACH INTERIOR BENT PILE A MINIMUM OF 23'-0" FEET FOR BENT 1, 26'-0" FOR BENT 2. GALVANIZE IN ACCORDANCE WITH SECTION 1076 OF THE STANDARD SPECIFICATIONS.



PLAN



DETAIL "A"
DIMENSIONS ARE TYPICAL EACH BEARING



ELEVATION

FOR SECTION A-A, SEE SHEET 2 OF 2

PROJECT NO. B-4967
SCOTLAND & HOKE COUNTY
STATION: 16+74.50 -L-

SHEET 1 OF 2



STATE OF NORTH CAROLINA
DEPARTMENT OF TRANSPORTATION
RALEIGH

SUBSTRUCTURE
BENTS 1 & 2

DESIGN ENGINEER OF RECORD: P.K. NEWION DATE: 4/4/16	
ASSEMBLED BY: D.J. POZOS DATE: 08-24-15	CHECKED BY: W.F. PARKER DATE: 09-09-15
DRAWN BY: DGE 05/10	REV. 11/14 MAA/TMG
CHECKED BY: MKT 05/10	

DocuSigned by:
Ting Fang
5/10/2016

DOCUMENT NOT CONSIDERED FINAL UNLESS ALL SIGNATURES COMPLETED

REVISIONS						SHEET NO. S-20
NO.	BY:	DATE:	NO.	BY:	DATE:	
1			3			TOTAL SHEETS 23
2			4			