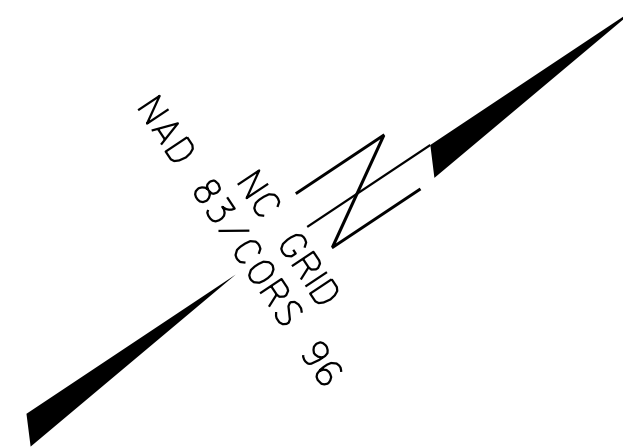


SURVEY CONTROL SHEET B-4967

FINAL

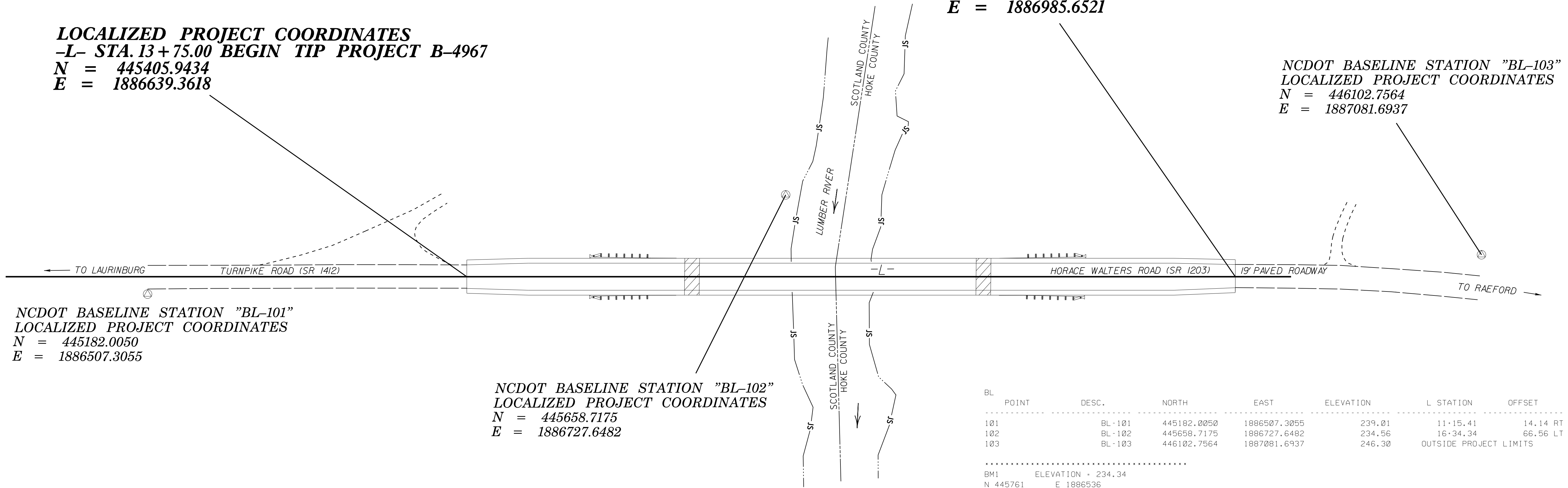


BM #1
 ELEVATION = 234.34'
 N 445761 E 1886536
 L STATION 16+14.00 283' LEFT
 RR SPIKE IN BASE OF 18" OAK

LOCALIZED PROJECT COORDINATES
-L- STA. 20+00.00 END TIP PROJECT B-4967
N = 445926.2395
E = 1886985.6521

LOCALIZED PROJECT COORDINATES
-L- STA. 13+75.00 BEGIN TIP PROJECT B-4967
N = 445405.9434
E = 1886639.3618

NCDOT BASELINE STATION "BL-103"
LOCALIZED PROJECT COORDINATES
N = 446102.7564
E = 1887081.6937



NCDOT BASELINE STATION "BL-101"
LOCALIZED PROJECT COORDINATES
N = 445182.0050
E = 1886507.3055

NCDOT BASELINE STATION "BL-102"
LOCALIZED PROJECT COORDINATES
N = 445658.7175
E = 1886727.6482

BL POINT	DESC.	NORTH	EAST	ELEVATION	L STATION	OFFSET
101	BL-101	445182.0050	1886507.3055	239.01	11+15.41	14.14 RT
102	BL-102	445658.7175	1886727.6482	234.56	16+34.34	66.56 LT
103	BL-103	446102.7564	1887081.6937	246.30	OUTSIDE PROJECT LIMITS	

.....
 BM1 ELEVATION = 234.34
 N 445761 E 1886536
 L STATION 16+14.00 283' LEFT
 RR SPIKE IN BASE OF 18" OAK

TYPE	STATION	NORTH	EAST
POT	10+00.00	445093.7657	1886431.5876
POT	20+45.33	445963.9728	1887010.7661

PERMANENT EASEMENT REBAR				
ALIGN	STATION	OFFSET	NORTH	EAST
L	15+35.00	-60.00	445572.3830	1886678.0637
L	15+35.00	-30.00	445555.7611	1886703.0379
L	15+85.00	-60.00	445614.0067	1886705.7669
L	15+85.00	-30.00	445597.3848	1886730.7411
L	17+65.00	-50.00	445758.3113	1886813.8232
L	17+65.00	-30.00	445747.2301	1886830.4727
L	18+10.00	-50.00	445795.7727	1886838.7561
L	18+10.00	-30.00	445784.6914	1886855.4056
L	18+15.00	30.00	445755.6099	1886908.1244
L	18+15.00	55.00	445741.7583	1886928.9362
L	17+65.00	55.00	445700.1346	1886901.2330
L	17+65.00	30.00	445713.9862	1886880.4211
L	15+85.00	30.00	445564.1409	1886780.6895
L	15+85.00	57.00	445549.1812	1886803.1663
L	15+35.00	57.00	445507.5575	1886775.4631
L	15+35.00	30.00	445522.5172	1886752.9863

DATUM DESCRIPTION

THE LOCALIZED COORDINATE SYSTEM DEVELOPED FOR THIS PROJECT IS BASED ON THE STATE PLANE COORDINATES ESTABLISHED BY NCDOT FOR MONUMENT "B4967-1" WITH NAD 83/ CORS 96 STATE PLANE GRID COORDINATES OF NORTHING: 446559.274(ft) EASTING: 1887752.455(ft) ELEVATION: 292.132(ft)
 THE AVERAGE COMBINED GRID FACTOR USED ON THIS PROJECT (GROUND TO GRID) IS: 0.9998747093
 THE N.C. LAMBERT GRID BEARING AND LOCALIZED HORIZONTAL GROUND DISTANCE FROM "B4967-1" TO -L- STATION 13+75.00 IS
 S 43° 58' 58.4" W 1602.856'
 ALL LINEAR DIMENSIONS ARE LOCALIZED HORIZONTAL DISTANCES
 VERTICAL DATUM USED IS NAVD88

NOTES:

- THE CONTROL DATA FOR THIS PROJECT CAN BE FOUND ELECTRONICALLY BY SELECTING PROJECT CONTROL DATA AT:
[HTTPS://CONNECT.NCDOT.GOV/RESOURCES/LOCATION/](https://connect.ncdot.gov/resources/location/)
 THE FILES TO BE FOUND ARE AS FOLLOWS:
 B4967_LS_CONTROL.TXT
 SITE CALIBRATION INFORMATION HAS NOT BEEN PROVIDED FOR THIS PROJECT. IF FURTHER INFORMATION IS NEEDED, PLEASE CONTACT THE LOCATION AND SURVEYS UNIT.
- INDICATES GEODETIC CONTROL MONUMENTS USED OR SET FOR HORIZONTAL PROJECT CONTROL BY THE NCDOT LOCATION AND SURVEYS UNIT.
 PROJECT CONTROL ESTABLISHED USING GLOBAL POSITIONING SYSTEM.
 NETWORK ESTABLISHED FROM NGS ONLINE POSITIONING SERVICE (OPUS)

NOTE: DRAWING NOT TO SCALE

04_APR-2016_08:19_14967_1s_1c_1.dgn
 14967_1S_1C_1.dwg
 6/2/99