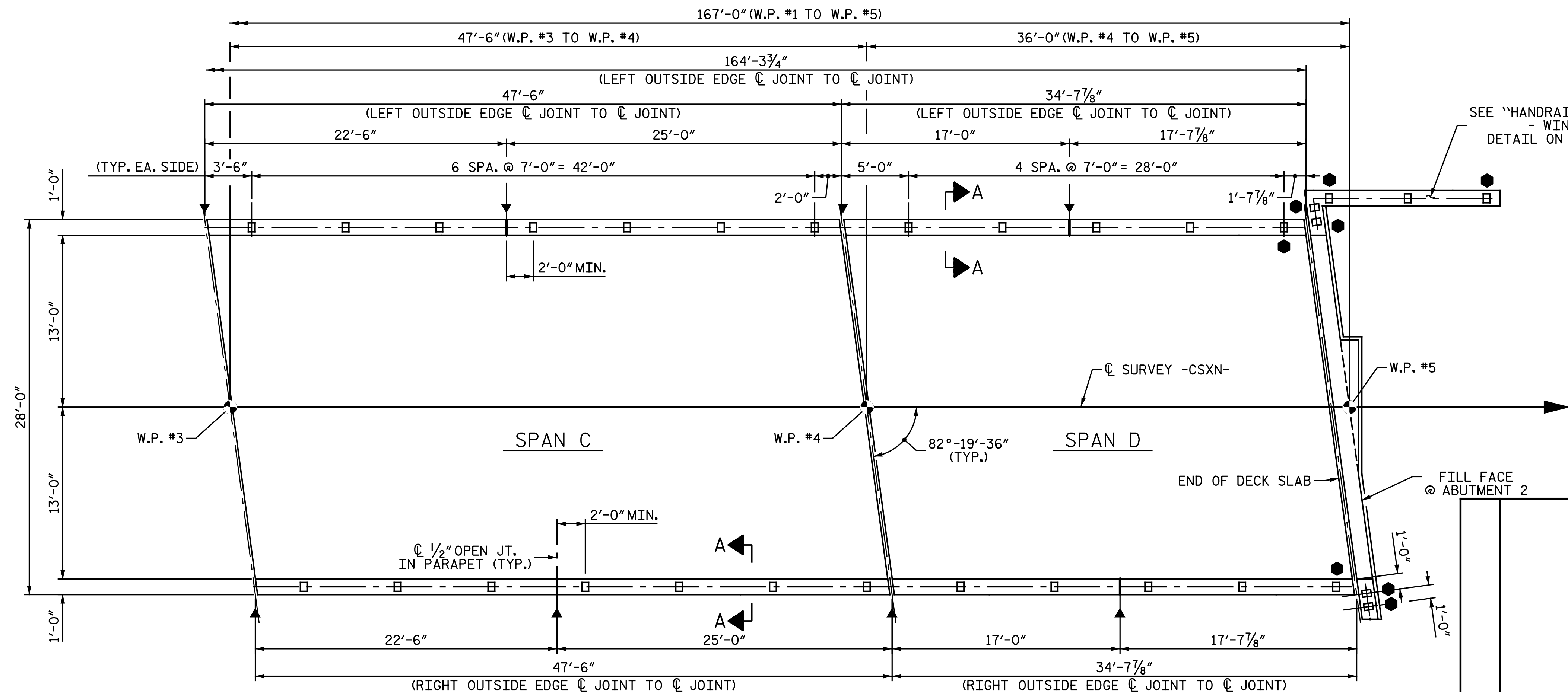


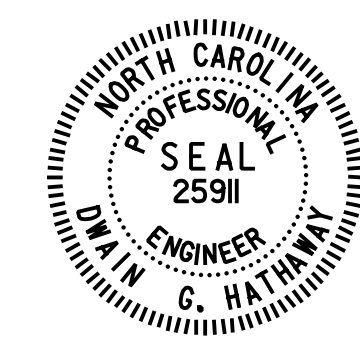
**HANDRAIL POST SPACING - SPANS A & B**  
RAIL NOT SHOWN FOR CLARITY

**NOTES:**  
 FOR DETAILS AND NOTES, SEE "HANDRAIL DETAILS" SHEET 2 OF 2.  
 FOR "SECTION A-A", SEE "HANDRAIL DETAILS" SHEET 2 OF 2.  
 ● INDICATES END POST REQUIRED AT THIS LOCATION. SEE "END POST DETAIL" ON SHEET 2 OF 2.  
 ▼ INDICATES RAIL EXPANSION JOINT (SPLICE GAP). SEE "RAIL EXPANSION JOINT DETAIL" ON SHEET 2 OF 2.



**HANDRAIL POST SPACING - SPANS C & D**  
RAIL NOT SHOWN FOR CLARITY

PROJECT NO. U-3308  
DURHAM COUNTY  
 STATION: 24+55.20 -LALT-  
13+22.18 -CSXN-  
 SHEET 1 OF 2



Designed by  
 Duane Hathaway  
 5/3/2016

**Michael Baker INTERNATIONAL**

Michael Baker Engineering  
 8000 Regency Parkway, Suite 600  
 Cary, North Carolina 27518  
 NC License No.: F-1084

REVISIONS						SHEET NO.
NO.	BY:	DATE:	NO.	BY:	DATE:	S4-25
1			3			TOTAL SHEETS
2			4			68

cmayhew 5/3/2016 9:37:10 AM  
 Filename: Y:\Projects\NCDOT\U-3308\Structures\Drawings\Final\404\_025\_U3308\_SML\_RL01.dgn

DRAWN BY: M. D. MAYHEW DATE: 1-2-14  
 CHECKED BY: S. A. DENNEY DATE: 2-25-14