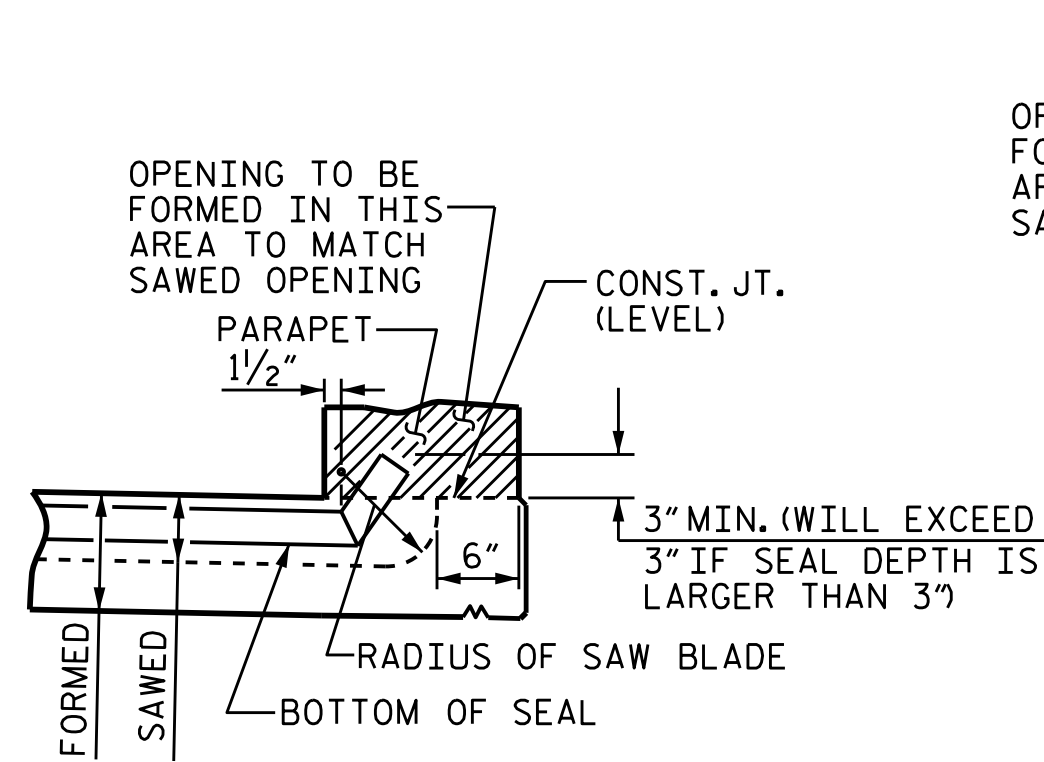
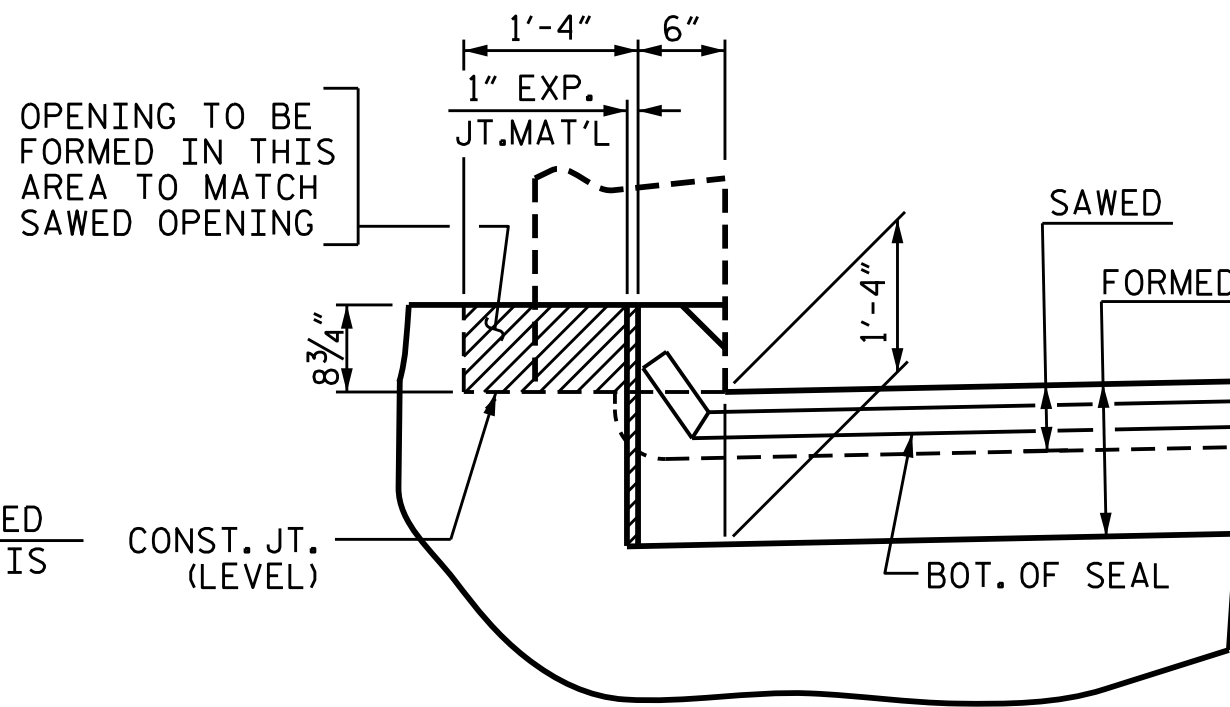


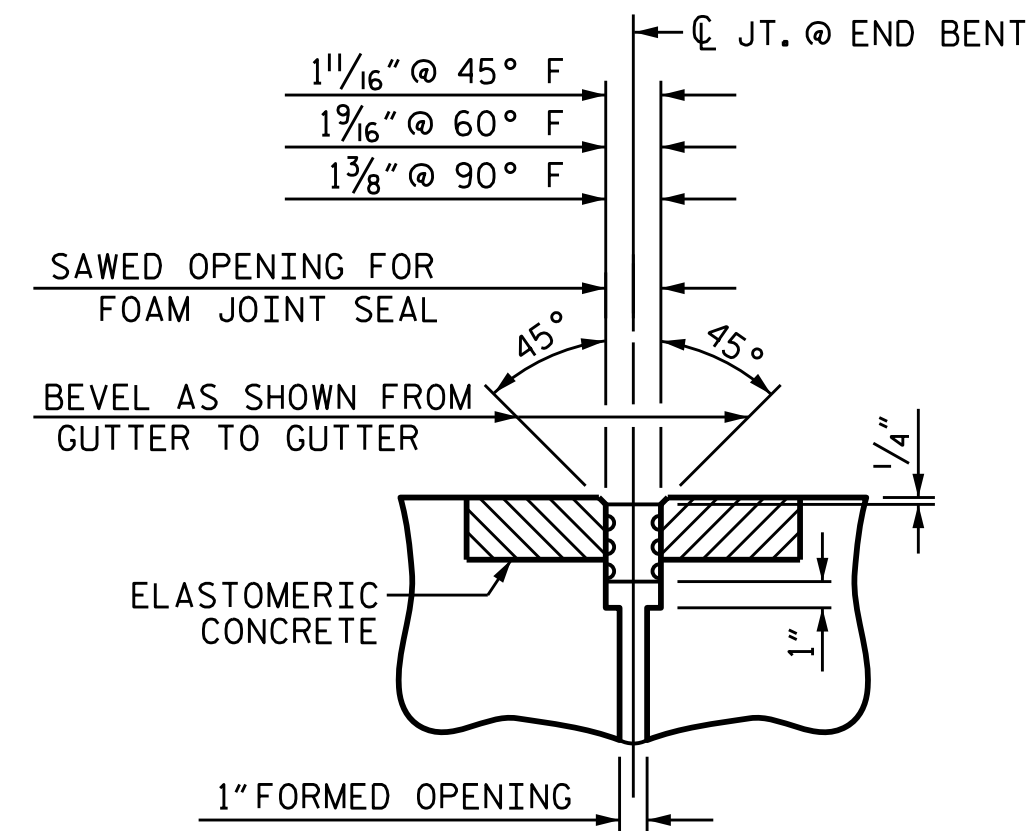
PLAN VIEW OF FOAM JOINT SEAL @ END BENT FOR LEFT SIDE STAGE I



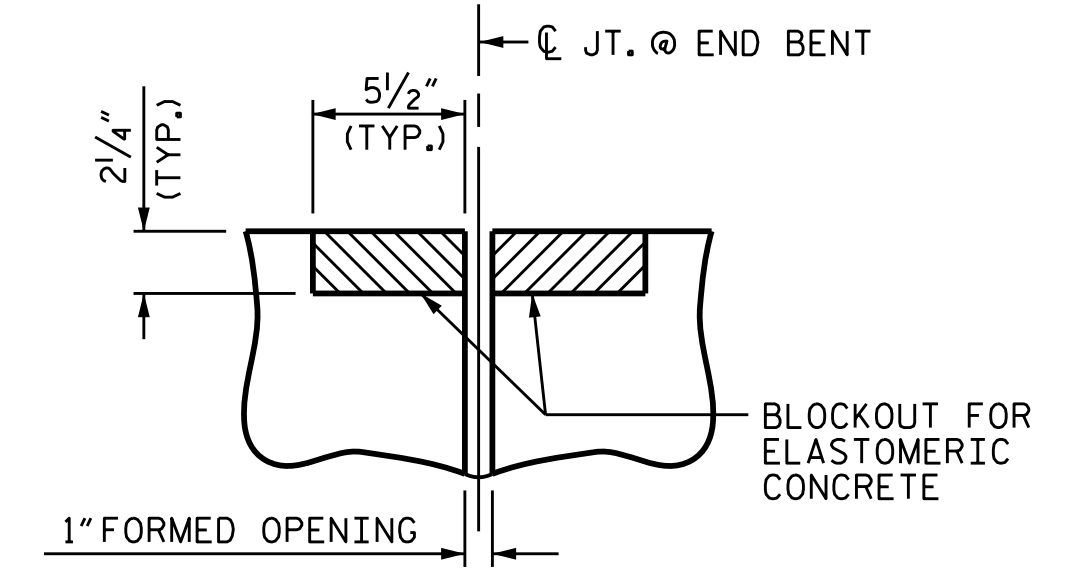
SECTION A-A



SECTION B-B



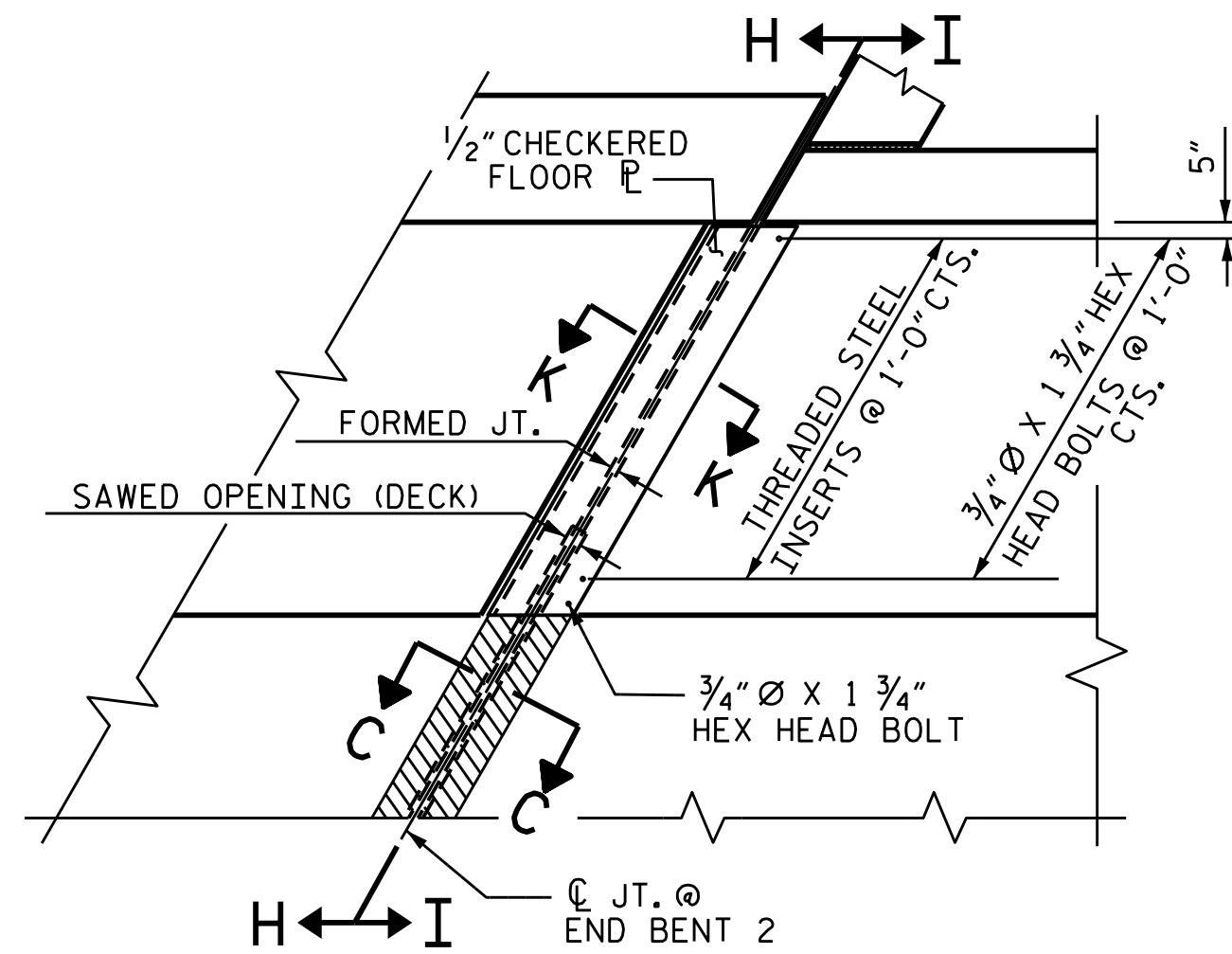
SECTION C-C
FOAM JOINT SEAL (EXPANSION)



SECTION C-C
FOAM JOINT SEAL (PRE-SAWED ELASTOMERIC CONCRETE DIMENSIONS)

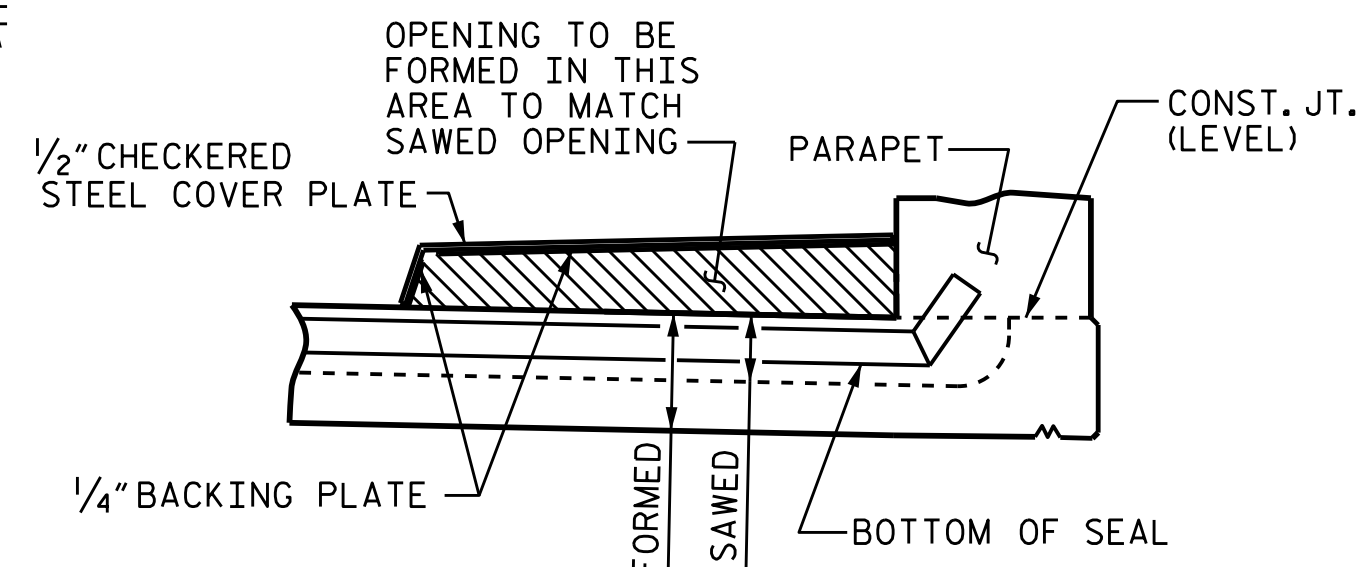
JOINT SEAL DETAILS @ END BENT STAGE I

FOAM JOINT SEAL TO BE CUT, HEAT WELDED AND TURNED UP PARALLEL TO SLOPED FACE OF THE PARAPET.
THE JOINT SHALL BE SAWS PRIOR TO THE CASTING OF THE PARAPET.

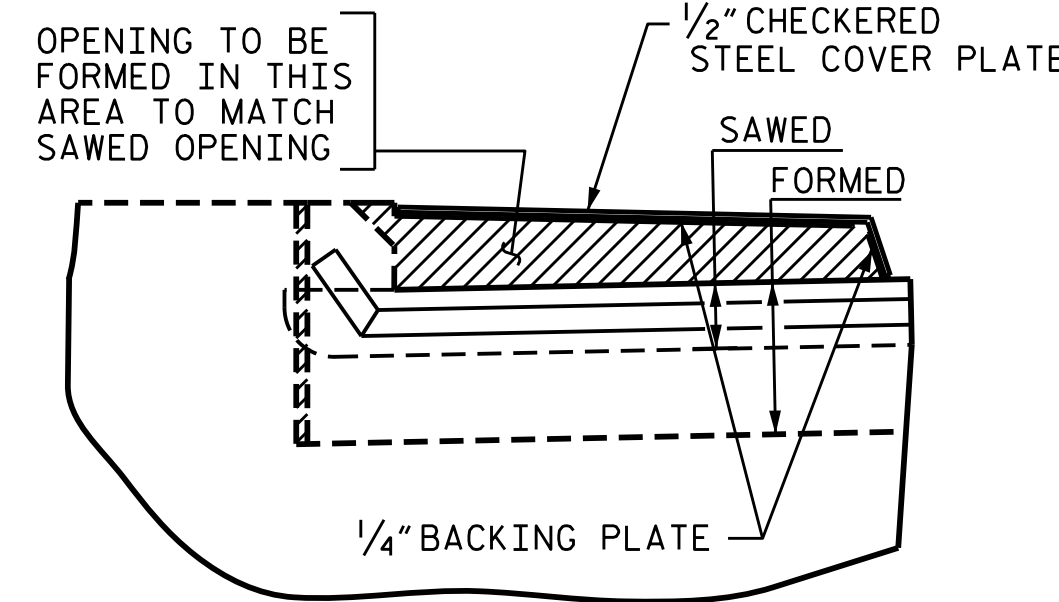


PLAN VIEW OF FOAM

JOINT SEAL @ END BENT FOR SIDEWALK LEFT SIDE STAGE III



SECTION H-H



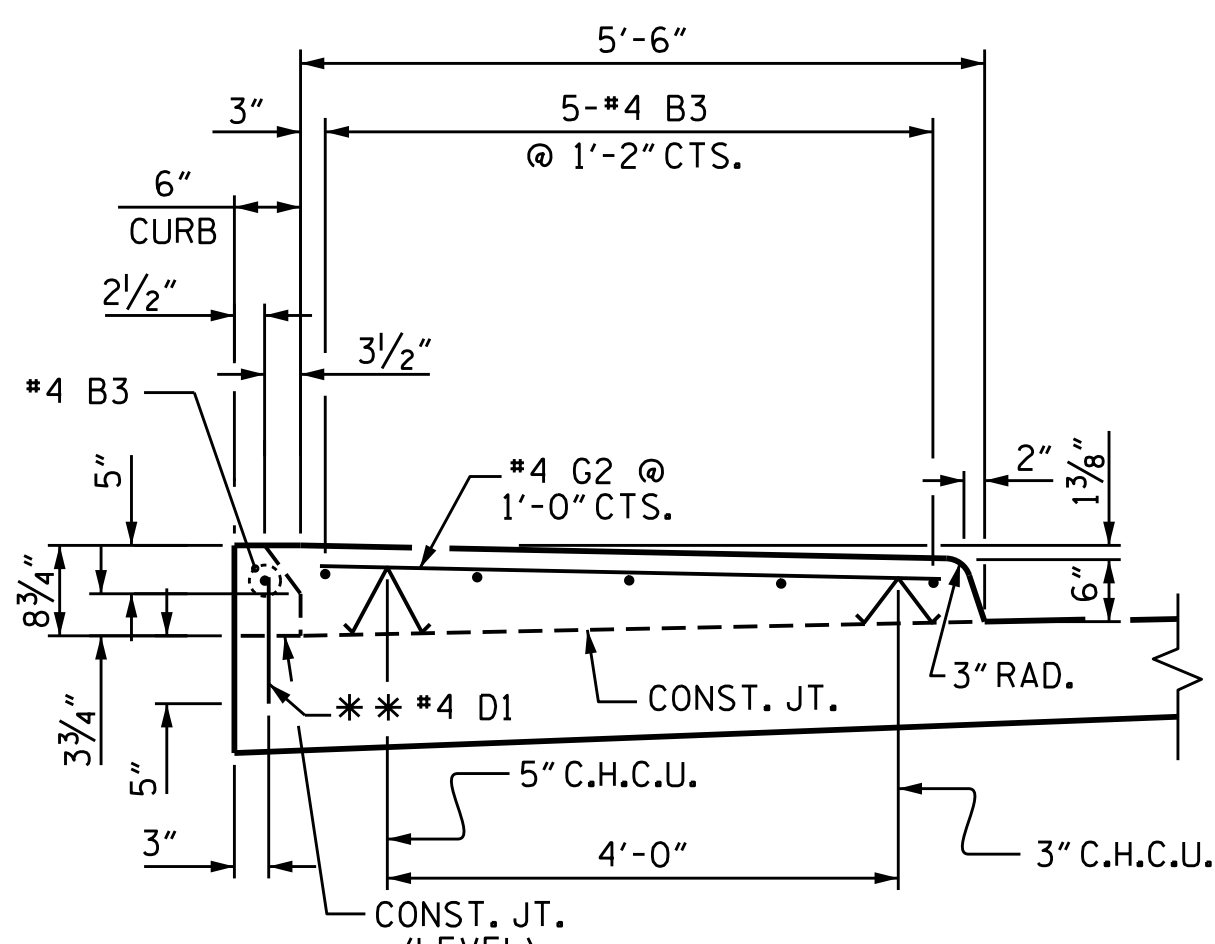
SECTION I-I

THE STEEL PLATES SHALL CONFORM TO AASHTO M270 GRADE 36 OR APPROVED EQUAL. AFTER FABRICATION, THE PLATES SHALL BE COMMERCIALY BLAST CLEANED AND EITHER COATED WITH A MINIMUM THICKNESS OF 4 MILS (DRY) OF ZINC-RICH PAINT, GALVANIZED OR METALLIZED TO A MINIMUM THICKNESS OF 6 MILS IN ACCORDANCE WITH THE STANDARD SPECIFICATIONS. FOR THERMAL SPRAYED COATINGS (METALLIZATION), SEE SPECIAL PROVISIONS.

THE 3/4 inch DIAMETER HEX HEAD BOLTS SHALL CONFORM TO ASTM F593 ALLOY 304 STAINLESS STEEL.

NO SEPARATE PAYMENT WILL BE MADE FOR FURNISHING AND INSTALLING THE COVER PLATE. THE ENTIRE COST OF THIS WORK SHALL BE INCLUDED IN THE LUMP SUM PRICE FOR "FOAM JOINT SEALS".

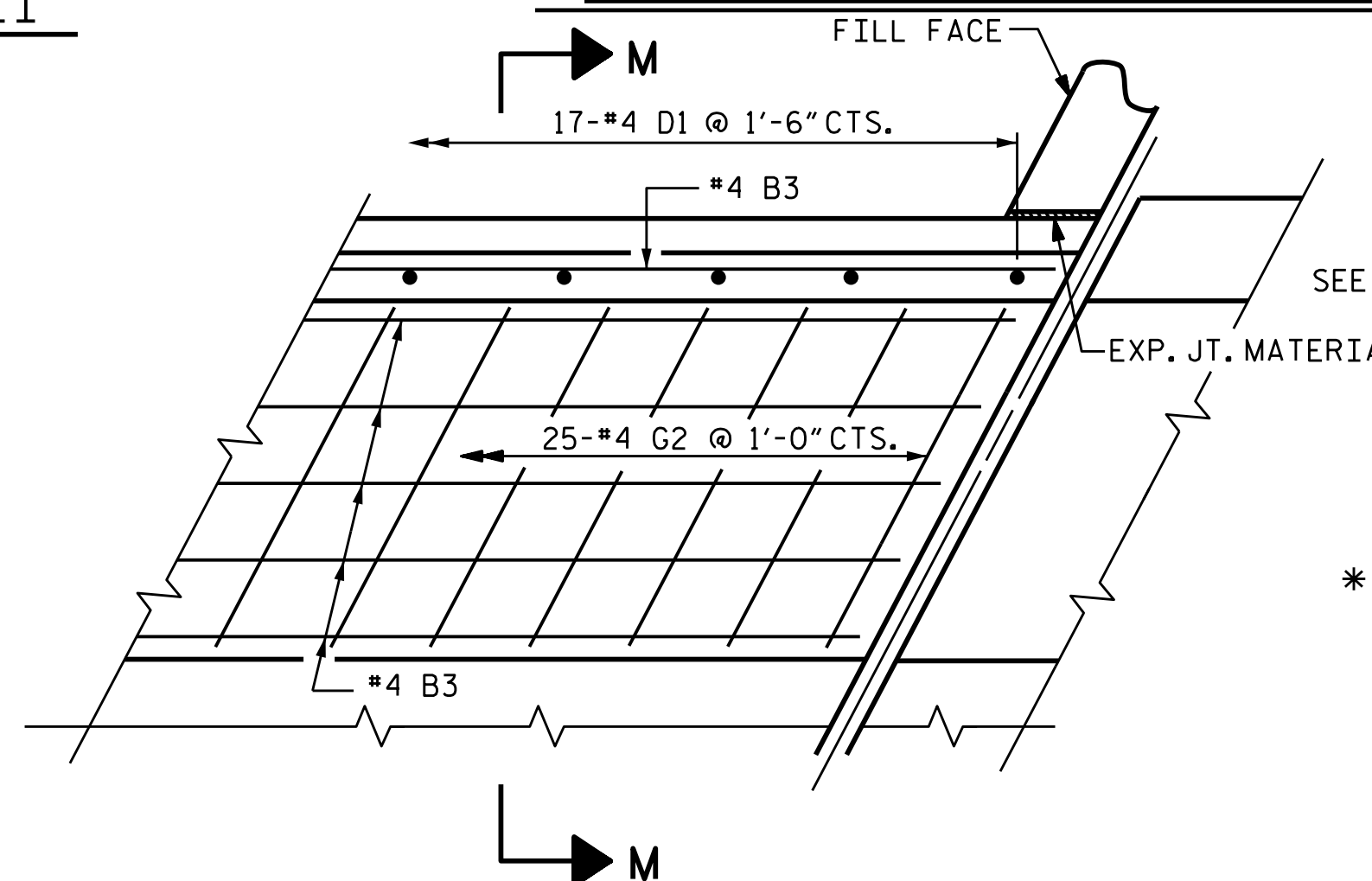
JOINT SEAL DETAILS @ END BENT STAGE III



SECTION M-M

SIDEWALK DETAILS

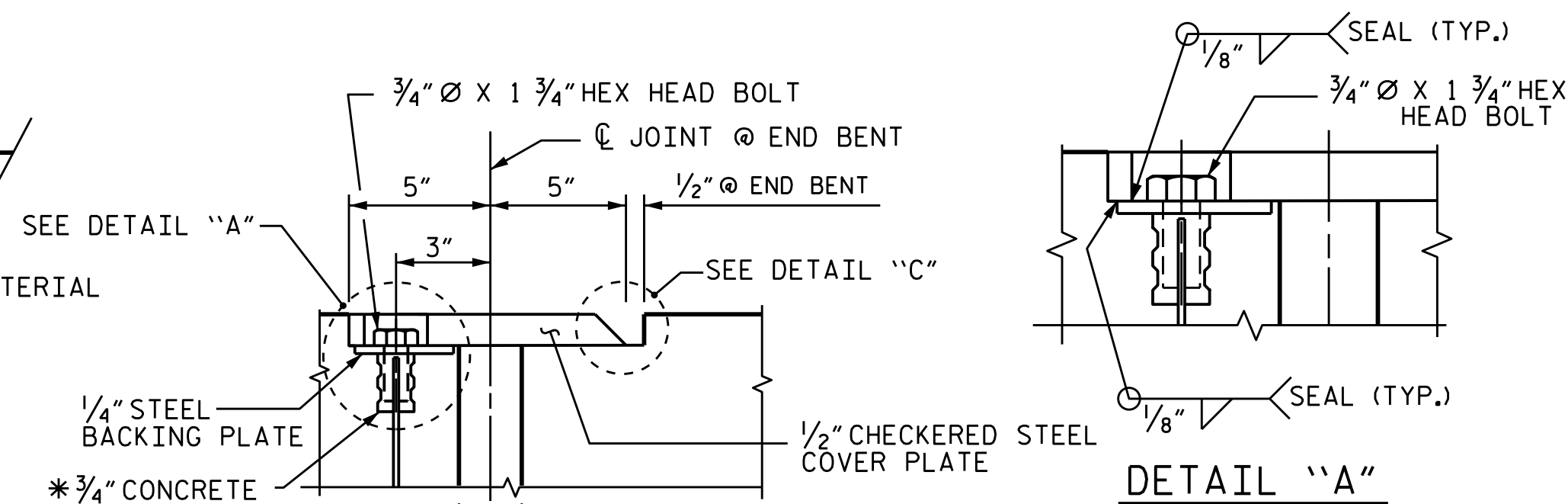
** DOWELS MAY BE PUSHED INTO GREEN CONCRETE AFTER THE SLAB HAS BEEN SCREEDED AND FLOAT FINISHED.



PLAN

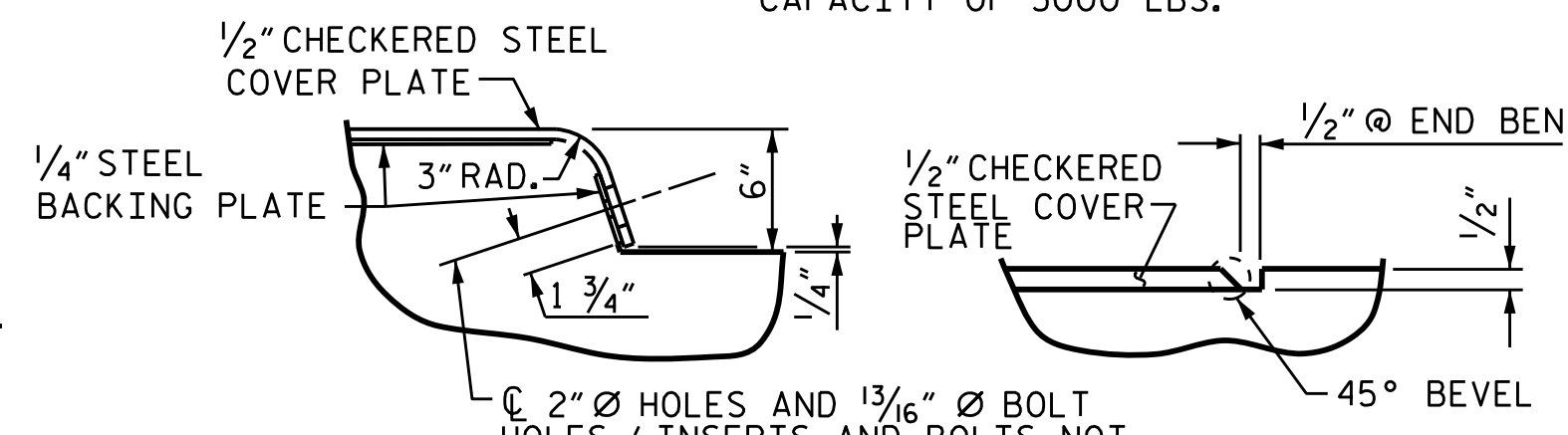
DETAILS OF SIDEWALK ON APPROACH SLAB

BEGIN APPROACH SLAB SHOWN, END APPROACH SLAB SIMILAR.



SECTION K-K

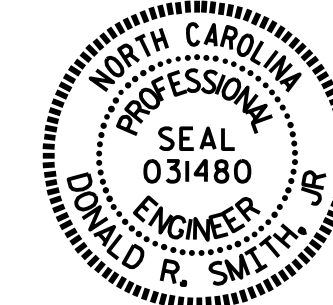
* THE 3/4 inch CONCRETE INSERTS SHALL BE CLOSED-END FERRULES WITH LOOPED WIRE STRUTS ATTACHED TO THEM. THE INSERTS SHALL CONFORM TO AASHTO M169, GRADE 12L14 AND SHALL HAVE A TENSILE WORKING LOAD CAPACITY OF 3000 LBS.



DETAIL "B"

DETAIL "C"

JOINT SEAL DETAILS @ END BENT



DocuSigned by:
Donald R. Smith, Jr.
EDC87706174B490.
4/1/2016

PROJECT NO. U-3308
DURHAM COUNTY
STATION: 16+42.70-LALT-

SHEET 4 OF 4

STATE OF NORTH CAROLINA
DEPARTMENT OF TRANSPORTATION
RALEIGH
STANDARD
BRIDGE APPROACH
SLAB DETAILS
STAGE III

ASSEMBLED BY : T. H. CARROLL DATE : 9/25/14
CHECKED BY : R. P. PATEL DATE : 10/21/14

DRAWN BY : FCJ 11/88 MAA/GM
REV. 7/12 MAA/GM
CHECKED BY : ARB 11/88 REV. 6/13 MAA/GM

DOCUMENT NOT CONSIDERED FINAL UNLESS ALL SIGNATURES COMPLETED

REVISIONS						SHEET NO.	
NO.	BY:	DATE:	NO.	BY:	DATE:	TOTAL SHEETS	
1			3			S1-47	
2			4			47	

STR. #1

STD. NO. BAS4