

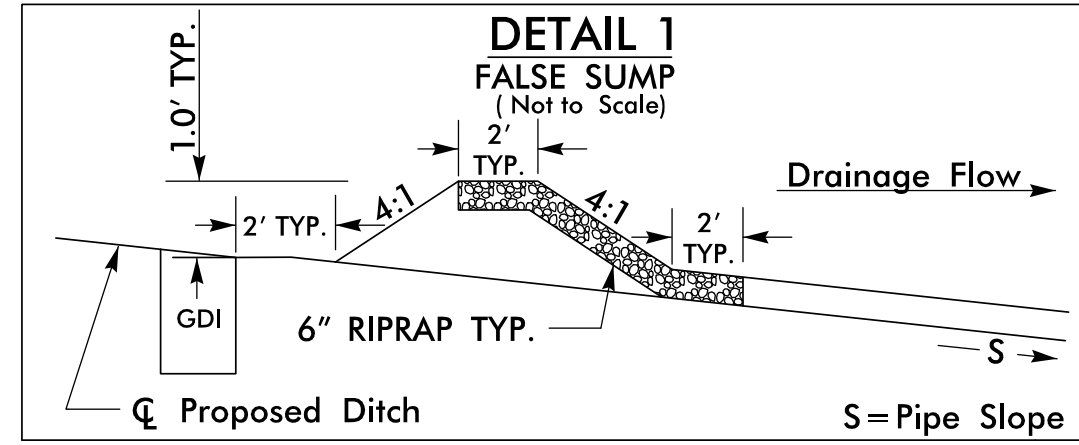
8/17/99

NSR BRIDGE MP H-56.10
CSXT BRIDGE MP SB-154.61

PROJECT REFERENCE NO. U-3308	SHEET NO. RR-8DET
RW SHEET NO.	
RAIL DESIGN ENGINEER	HYDRAULICS ENGINEER

DETOUR TRACK PLANS

FOR -NSD2- PROFILE SEE SHEETS RR-22 THROUGH RR-24
FOR -EXCSX- PROFILE SEE SHEET RR-20



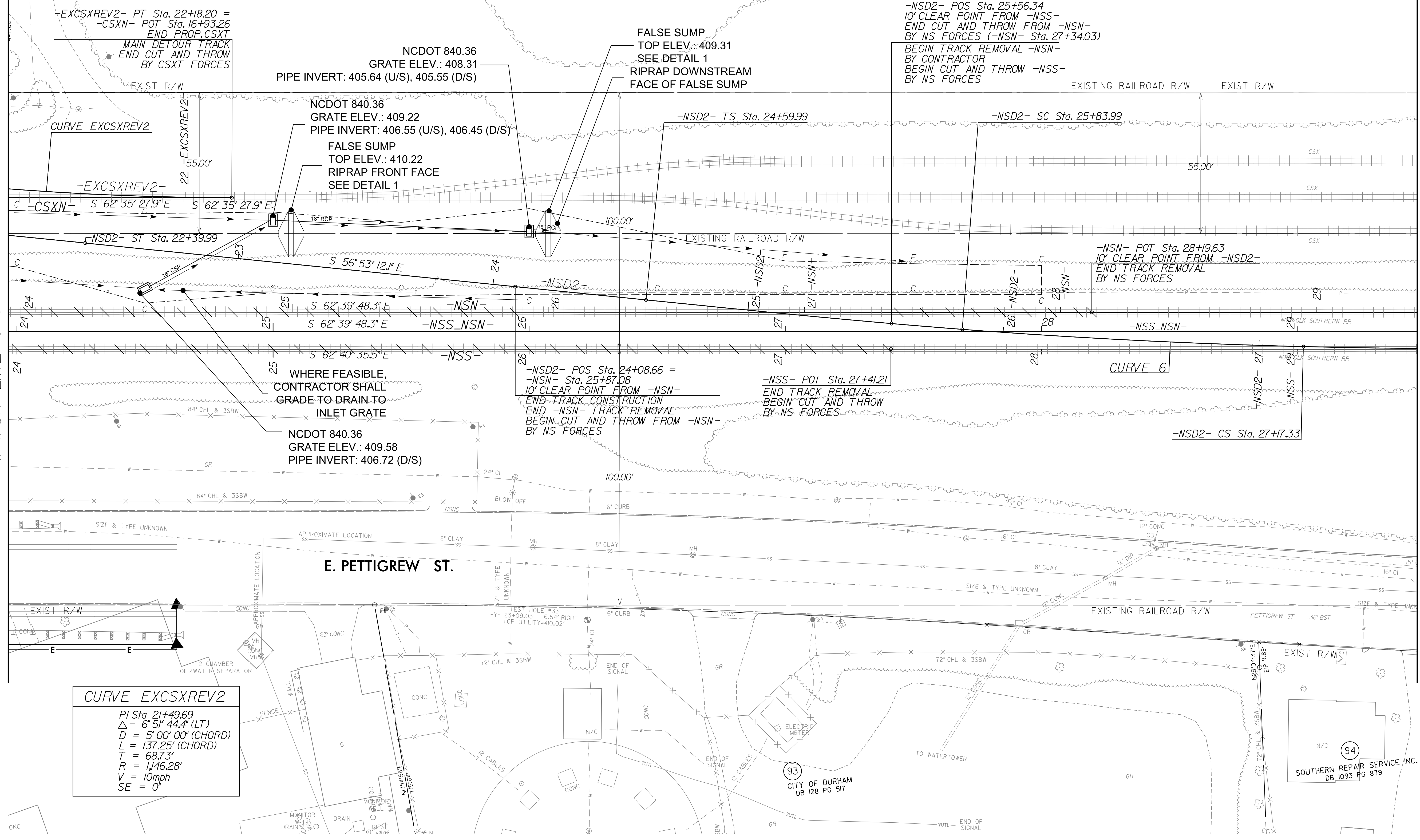
CURVE 6		
PIs Sta. 25+42.66	PI Sta. 26+50.68	PIs Sta. 27+58.66
$\theta_s = 1^\circ 23' 41.7''$	$\Delta = 3^\circ 00' 00.0''$ (LT)	$\theta_s = 1^\circ 23' 41.7''$
$L_s = 124.00'$	$D = 2^\circ 15' 00''$ (CHORD)	$L_s = 124.00'$
$LT = 82.67'$	$L = 133.33'$	$LT = 82.67'$
$ST = 41.34'$	$T = 66.69'$	$ST = 41.34'$
	$R = 2,546.64'$	
	$V = 55\text{mph PASSENGER}$	
	$V = 50\text{mph FREIGHT}$	
	$SE = 2''$	

FROM -NSS_NSN- STA. 25+05 TO STA. 25+15
FROM -NSS_NSN- STA. 26+05 TO STA. 26+15

-NSD2- POS Sta. 25+56.34
10' CLEAR POINT FROM -NSS-
END CUT AND THROW FROM -NSN-
BY NS FORCES (-NSN- Sta. 27+34.03)
BEGIN TRACK REMOVAL -NSN-
BY CONTRACTOR
BEGIN CUT AND THROW -NSS-
BY NS FORCES

MATCH LINE SHEET RR-7DET

MATCH LINE SHEET RR-9DET



CURVE EXCSXREV2	
PI Sta. 21+49.69	
$\Delta = 6^\circ 51' 44.4''$ (LT)	
$D = 5^\circ 00' 00''$ (CHORD)	
$L = 137.25'$ (CHORD)	
$T = 68.73'$	
$R = 1,146.28'$	
$V = 10\text{mph}$	
$SE = 0''$	

N/C 94
SOUTHERN REPAIR SERVICE, INC.
DB 1093 PG 879

93
CITY OF DURHAM
DB 128 PG 517

2/16/2016 5:32:51 \\station\track\RAWA_u3308_r.dwg ps.RR-8A.dgn