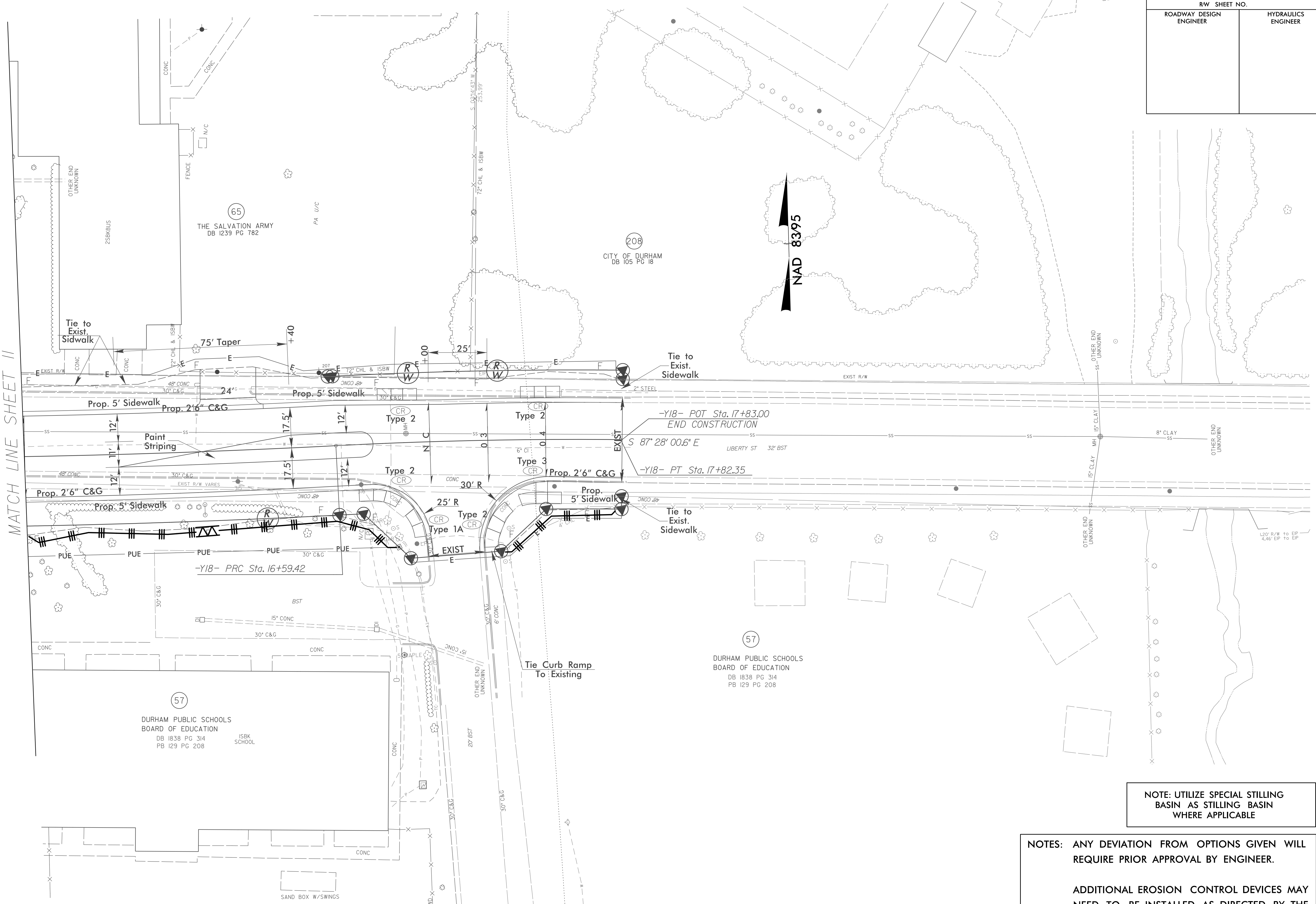


PROJECT REFERENCE NO. U-3308	SHEET NO. EC-44/CONST-23
RW SHEET NO.	
ROADWAY DESIGN ENGINEER	HYDRAULICS ENGINEER

R/W Revision 4/15/14 JCL
Adjusted Existing R/W Line on Parcels 65 and 208

MATCH LINE SHEET II



NOTE: UTILIZE SPECIAL STILLING BASIN AS STILLING BASIN WHERE APPLICABLE

NOTES: ANY DEVIATION FROM OPTIONS GIVEN WILL REQUIRE PRIOR APPROVAL BY ENGINEER.

ADDITIONAL EROSION CONTROL DEVICES MAY NEED TO BE INSTALLED AS DIRECTED BY THE ENGINEER.