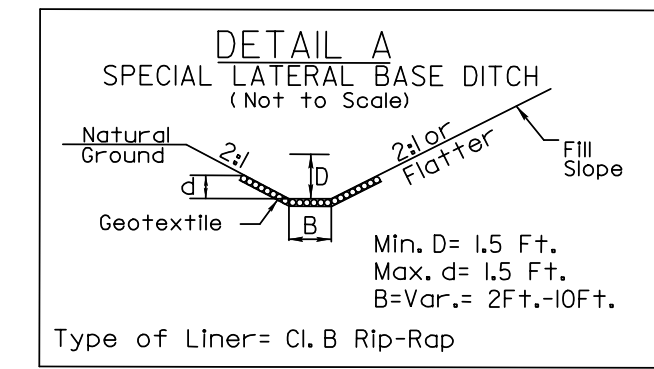
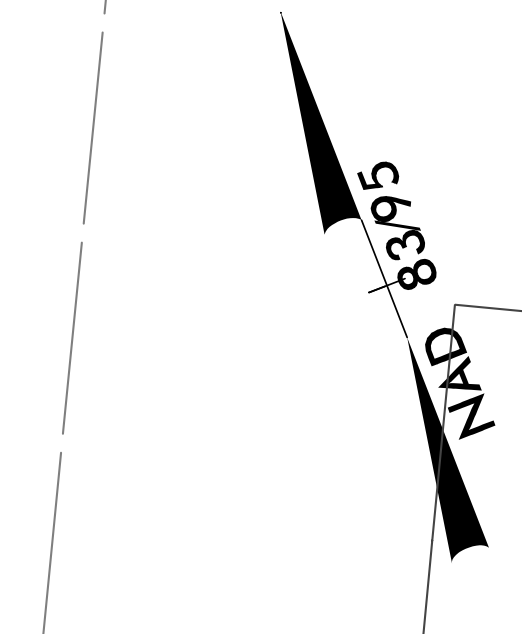
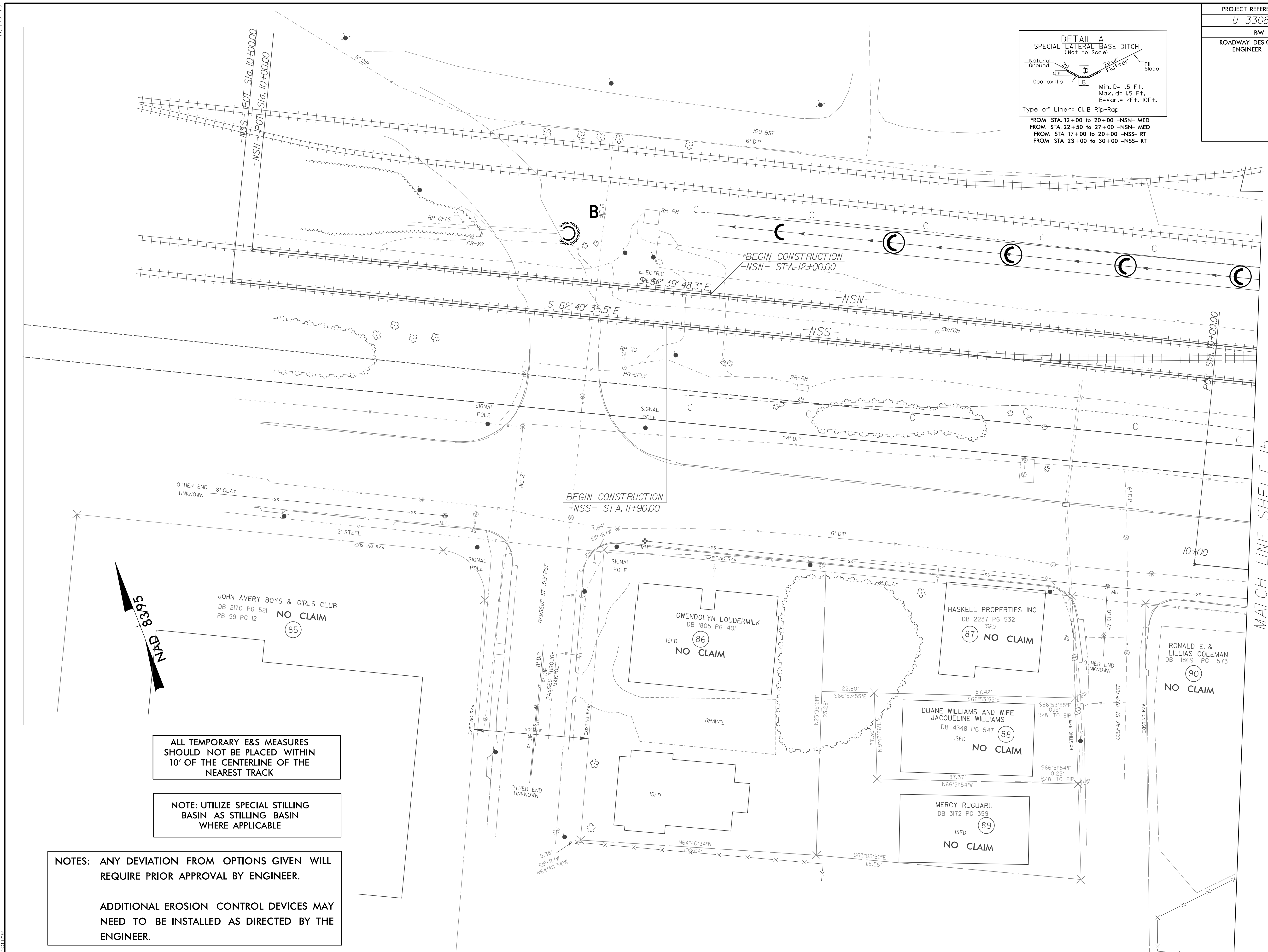


PROJECT REFERENCE NO.	SHEET NO.
U-3308	EC-35/CONST-14
RW SHEET NO.	
ROADWAY DESIGN ENGINEER	HYDRAULICS ENGINEER



FROM STA. 12+00 TO 20+00 -NSN- MED
 FROM STA. 22+50 TO 27+00 -NSN- MED
 FROM STA. 17+00 TO 20+00 -NSS- RT
 FROM STA. 23+00 TO 30+00 -NSS- RT



JOHN AVERY BOYS & GIRLS CLUB
 DB 2170 PG 521
 PB 59 PG 12
 NO CLAIM
 (85)

GWENDOLYN LOUDERMILK
 DB 1805 PG 401
 ISFD
 NO CLAIM
 (86)

HASKELL PROPERTIES INC
 DB 2237 PG 532
 ISFD
 NO CLAIM
 (87)

DUANE WILLIAMS AND WIFE
 JACQUELINE WILLIAMS
 DB 4348 PG 547
 ISFD
 NO CLAIM
 (88)

MERCY RUGUARU
 DB 3172 PG 359
 ISFD
 NO CLAIM
 (89)

RONALD E. &
 LILLIAS COLEMAN
 DB 1869 PG 573
 NO CLAIM
 (90)

ALL TEMPORARY E&S MEASURES
 SHOULD NOT BE PLACED WITHIN
 10' OF THE CENTERLINE OF THE
 NEAREST TRACK

NOTE: UTILIZE SPECIAL STILLING
 BASIN AS STILLING BASIN
 WHERE APPLICABLE

NOTES: ANY DEVIATION FROM OPTIONS GIVEN WILL
 REQUIRE PRIOR APPROVAL BY ENGINEER.

ADDITIONAL EROSION CONTROL DEVICES MAY
 NEED TO BE INSTALLED AS DIRECTED BY THE
 ENGINEER.

4/13/2015
 R:\Projects\U3308.r\dj.ec.ps14.dgn
 8/17/99