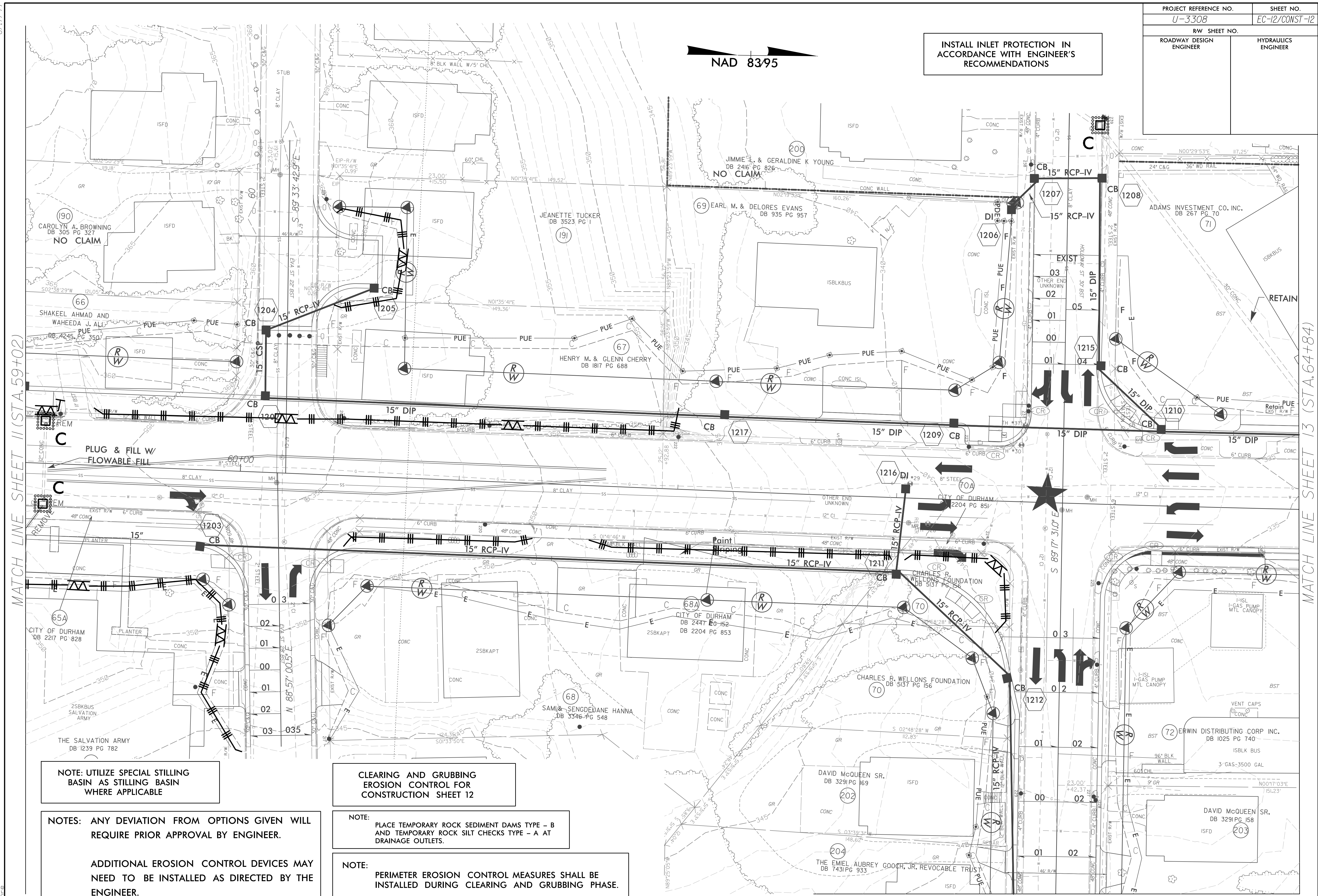


PROJECT REFERENCE NO.	SHEET NO.
U-3308	EC-12/CONST-12
RW SHEET NO.	
ROADWAY DESIGN ENGINEER	HYDRAULICS ENGINEER

R/W Revision 6/1/14 JCL
 Converted Temporary Construction Easement (TCE) to Permanent Utility Easement (PUE) on Parcels 66, 67, 69, 70, 71, 202 and 204.

NAD 83/95

INSTALL INLET PROTECTION IN ACCORDANCE WITH ENGINEER'S RECOMMENDATIONS



NOTE: UTILIZE SPECIAL STILLING BASIN AS STILLING BASIN WHERE APPLICABLE

CLEARING AND GRUBBING EROSION CONTROL FOR CONSTRUCTION SHEET 12

NOTES: ANY DEVIATION FROM OPTIONS GIVEN WILL REQUIRE PRIOR APPROVAL BY ENGINEER.

NOTE: PLACE TEMPORARY ROCK SEDIMENT DAMS TYPE - B AND TEMPORARY ROCK SILT CHECKS TYPE - A AT DRAINAGE OUTLETS.

ADDITIONAL EROSION CONTROL DEVICES MAY NEED TO BE INSTALLED AS DIRECTED BY THE ENGINEER.

NOTE: PERIMETER EROSION CONTROL MEASURES SHALL BE INSTALLED DURING CLEARING AND GRUBBING PHASE.

4/13/2015
 R:\Projects\4133308_rdu.ec.ps12_CG.dgn
 8/17/99

MATCH LINE SHEET 24