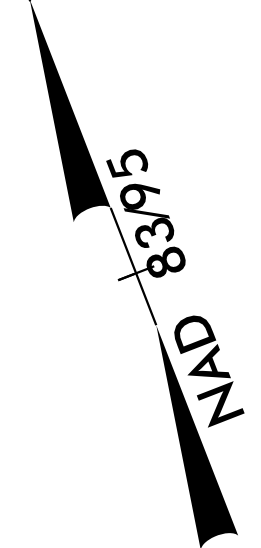


PROJECT REFERENCE NO. U-3308	SHEET NO. 17
R/W SHEET NO.	
ROADWAY DESIGN ENGINEER SEAL 014571 JAMES A. SPEER	HYDRAULICS ENGINEER SEAL 019721 WILLIAM H. ELAM
DocuSigned by: James Speer 11/24/2015	DocuSigned by: Wm. H. Elam 11/23/2015

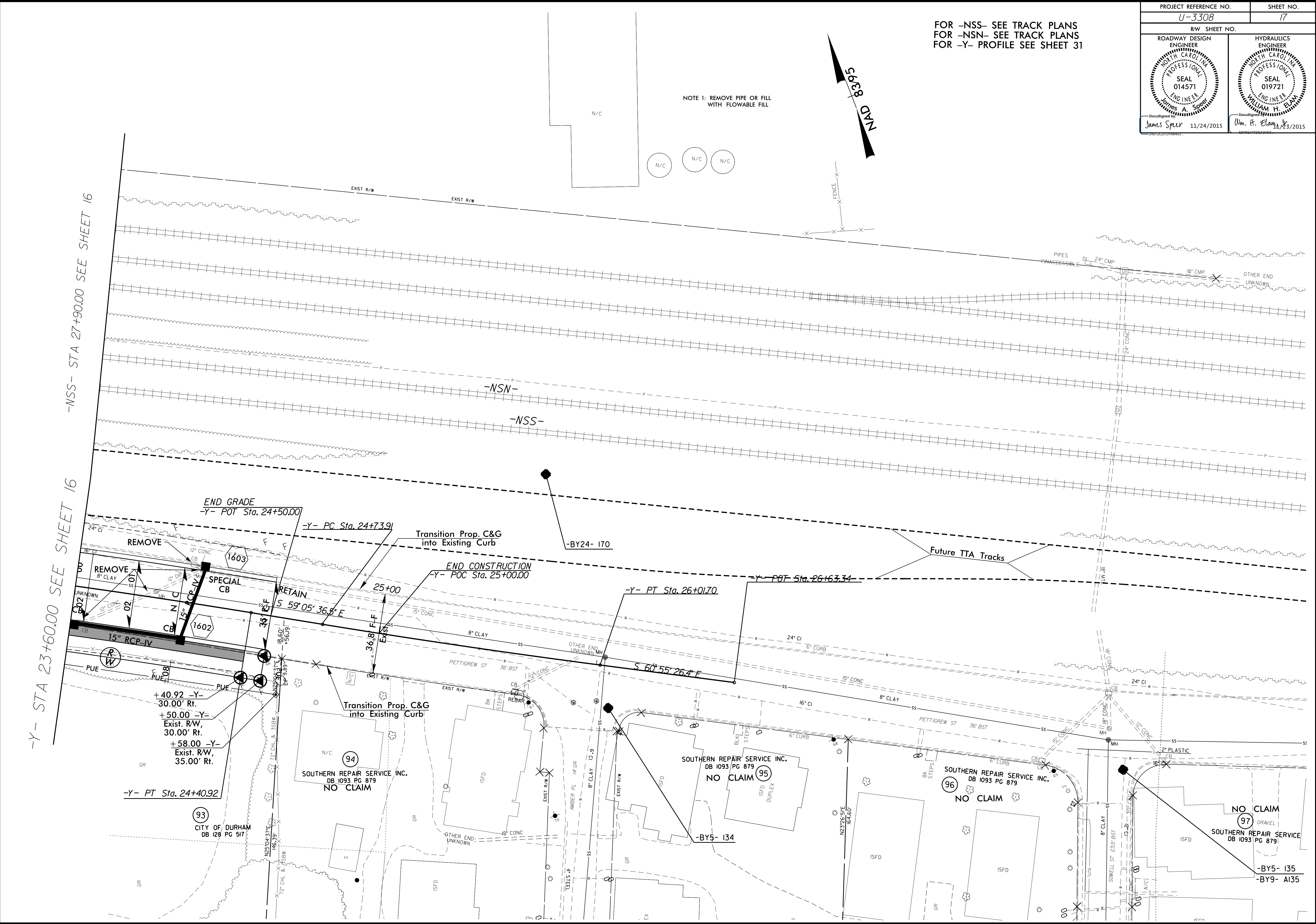
FOR -NSS- SEE TRACK PLANS  
FOR -NSN- SEE TRACK PLANS  
FOR -Y- PROFILE SEE SHEET 31

NOTE 1: REMOVE PIPE OR FILL WITH FLOWABLE FILL



REVISIONS

-Y- STA 23+60.00 SEE SHEET 16  
-NSS- STA 27+90.00 SEE SHEET 16



END GRADE  
-Y- POT Sta. 24+50.00  
-Y- PC Sta. 24+73.91  
REMOVE  
REMOVE  
SPECIAL CB  
RETAIN  
END CONSTRUCTION  
-Y- POC Sta. 25+00.00  
-Y- PT Sta. 26+01.70  
-Y- POT Sta. 26+63.34  
Transition Prop. C&G into Existing Curb  
Transition Prop. C&G into Existing Curb  
+40.92 -Y- 30.00' Rt.  
+50.00 -Y- 30.00' Rt.  
+58.00 -Y- 35.00' Rt.  
-Y- PT Sta. 24+40.92

94  
SOUTHERN REPAIR SERVICE INC.  
DB 1093 PG 879  
NO CLAIM

95  
SOUTHERN REPAIR SERVICE INC.  
DB 1093 PG 879  
NO CLAIM

96  
SOUTHERN REPAIR SERVICE INC.  
DB 1093 PG 879  
NO CLAIM

97  
SOUTHERN REPAIR SERVICE  
DB 1093 PG 879  
NO CLAIM

23-NOV-2015 10:45 U3308.rdy.psl7.dgn  
3:44:58 PM JAMES A. SPEER