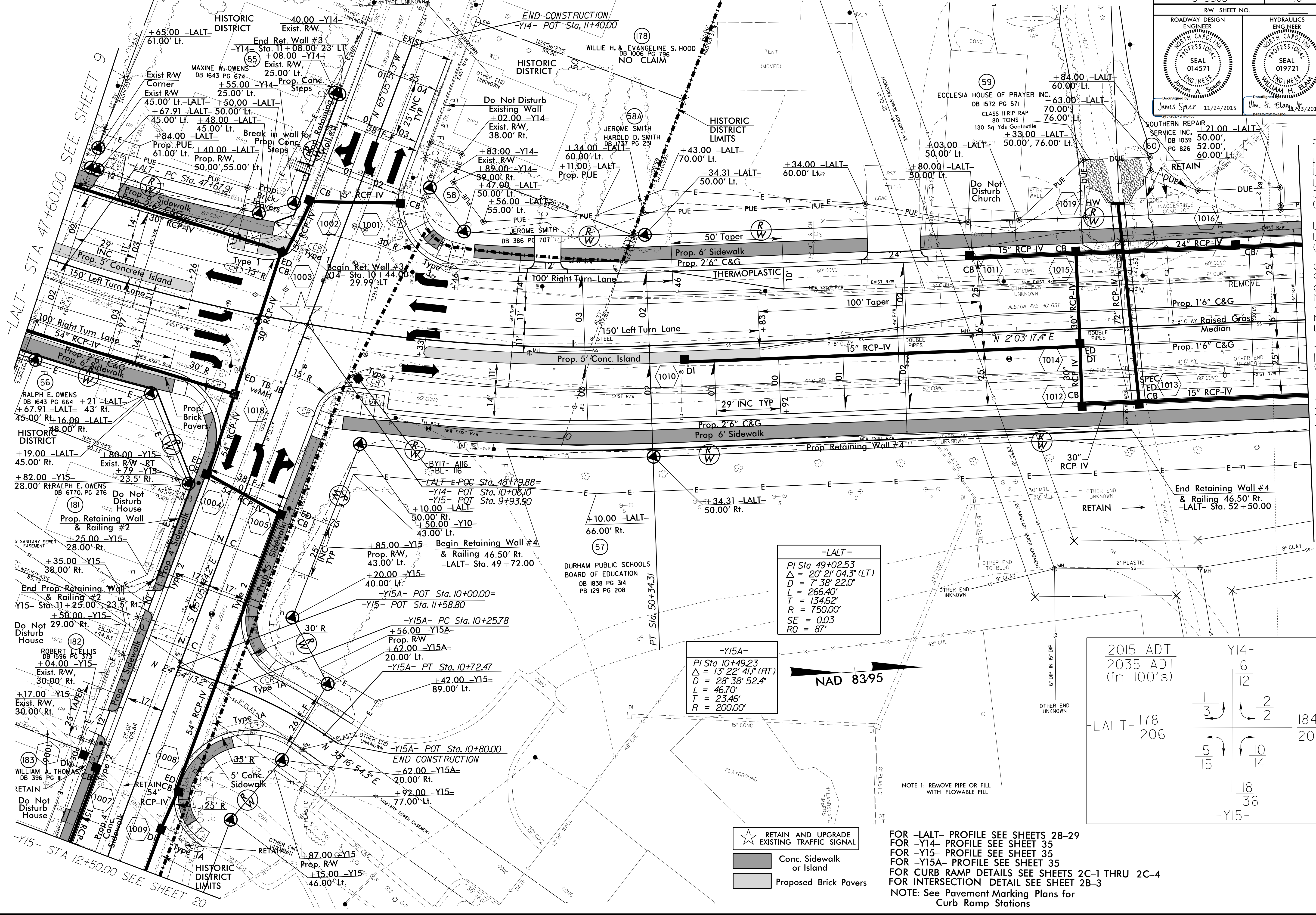


| | |
|---|--|
| PROJECT REFERENCE NO. U-3308 | SHEET NO. 10 |
| RW SHEET NO. | |
| ROADWAY DESIGN ENGINEER CAROL M. JAMES PROFESSIONAL SEAL 014571 JAMES A. SPEER | HYDRAULICS ENGINEER CAROL M. JAMES PROFESSIONAL SEAL 019721 WILLIAM H. BLUM |
| James Speer 11/24/2015 | Wm. H. Blum 11/23/2015 |



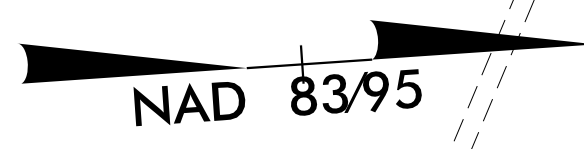
REVISIONS

-LALT- STA 47+60.00 SEE SHEET 9

-LALT- STA 53+30.00 SEE SHEET 11

-LALT-
 PI Sta 49+02.53
 $\Delta = 20' 21" 04.3' (LT)$
 D = 7' 38" 22.0"
 L = 266.40'
 T = 134.62'
 R = 750.00'
 SE = 0.03
 RO = 87'

-Y15A-
 PI Sta 10+49.23
 $\Delta = 13' 22' 41" (RT)$
 D = 28' 38" 52.4"
 L = 46.70'
 T = 23.46'
 R = 200.00'



| | | |
|------------|-------|-------|
| 2015 ADT | -Y14- | |
| 2035 ADT | 6 | |
| (in 100's) | 12 | |
| | 1/3 | 2/2 |
| LALT- 178 | | 184 |
| 206 | | 204 |
| | 5/15 | 10/14 |
| | 18 | 36 |
| | -Y15- | |

- RETAIN AND UPGRADE EXISTING TRAFFIC SIGNAL
- Conc. Sidewalk or Island
- Proposed Brick Pavers

FOR -LALT- PROFILE SEE SHEETS 28-29
 FOR -Y14- PROFILE SEE SHEET 35
 FOR -Y15- PROFILE SEE SHEET 35
 FOR -Y15A- PROFILE SEE SHEET 35
 FOR CURB RAMP DETAILS SEE SHEETS 2C-1 THRU 2C-4
 FOR INTERSECTION DETAIL SEE SHEET 2B-3
 NOTE: See Pavement Marking Plans for Curb Ramp Stations

23-NOV-2015 10:45 U3308.rdy-ps10.dgn

-Y15- STA 12+50.00 SEE SHEET 20