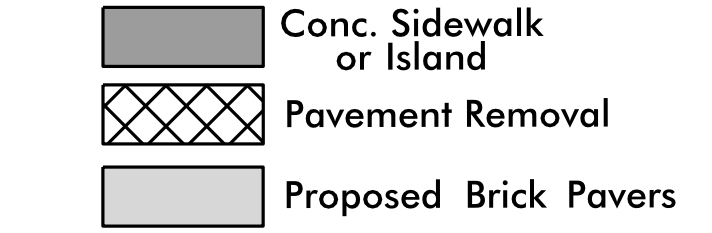


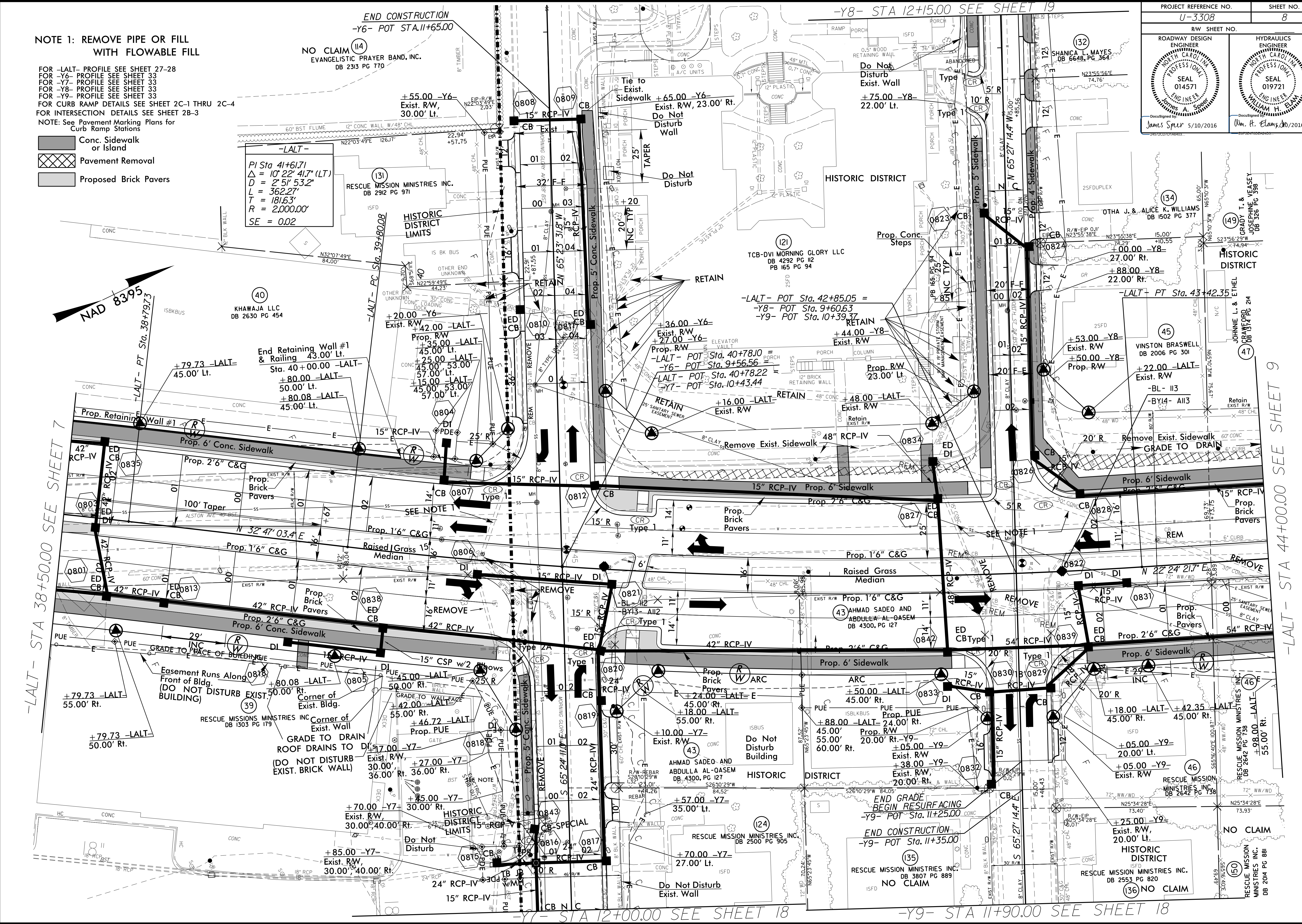
NOTE 1: REMOVE PIPE OR FILL WITH FLOWABLE FILL

FOR -LALT- PROFILE SEE SHEET 27-28
 FOR -Y6- PROFILE SEE SHEET 33
 FOR -Y7- PROFILE SEE SHEET 33
 FOR -Y8- PROFILE SEE SHEET 33
 FOR -Y9- PROFILE SEE SHEET 33
 FOR CURB RAMP DETAILS SEE SHEET 2C-1 THRU 2C-4
 FOR INTERSECTION DETAILS SEE SHEET 2B-3

NOTE: See Pavement Marking Plans for Curb Ramp Stations



-LALT-
 PI Sta 41+61.71
 $\Delta = 10' 22" 41.7" (LT)$
 $D = 2' 51" 53.2"$
 $L = 362.27'$
 $T = 181.63'$
 $R = 2,000.00'$
 $SE = 0.02$



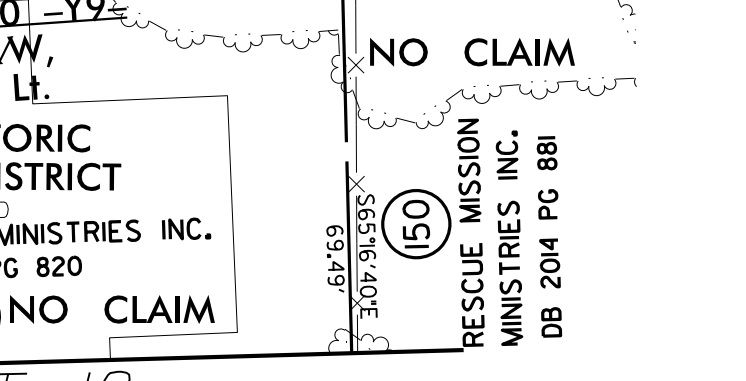
-LALT- STA 38+50.00 SEE SHEET 7

-Y6- STA 12+00.00 SEE SHEET 18

-Y9- STA 11+90.00 SEE SHEET 18

-LALT- STA 44+00.00 SEE SHEET 9

8/17/99
 REVISIONS
 0-MAY-2016 08:52 33308-rdy-p08.dgn



NO CLAIM (14) EVANGELISTIC PRAYER BAND, INC. DB 2313 PG 770
 RESCUE MISSION MINISTRIES INC. DB 2912 PG 971
 KHAWAJA LLC DB 2630 PG 454
 AHMAD SADEQ AND ABDULLA AL-QASEM DB 4300, PG 127
 AHMAD SADEQ AND ABDULLA AL-QASEM DB 4300, PG 127
 RESCUE MISSION MINISTRIES INC. DB 2500 PG 905
 RESCUE MISSION MINISTRIES INC. DB 3807 PG 889
 RESCUE MISSION MINISTRIES INC. DB 2553 PG 820
 SHANICA L. MAYES DB 6648, PG 364
 OTHA J. & ALICE K. WILLIAMS DB 1502 PG 377
 JOHNIE L. & ETHEL GRAYSON DB 1514 PG 214
 VINSTON BRASWELL DB 2006 PG 301
 RESCUE MISSION MINISTRIES INC. DB 2642 PG 738
 RESCUE MISSION MINISTRIES INC. DB 2642 PG 738
 RESCUE MISSION MINISTRIES INC. DB 2014 PG 881