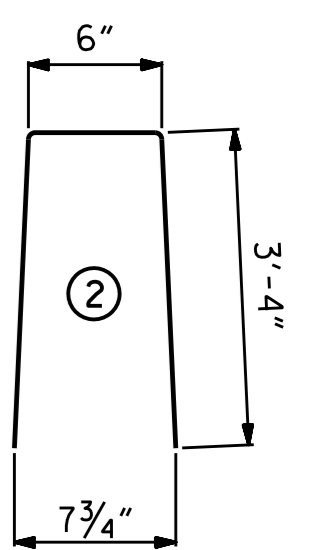


VERTICAL CONCRETE BARRIER RAIL HEIGHT TABLE			
SPAN	LOCATION	AT LEFT GUTTERLINE	AT RIGHT GUTTERLINE
A	BEARING (NEAR)	3'-9 ³ / ₄ "	3'-9 ³ / ₄ "
	MID-SPAN	3'-9 ⁵ / ₈ "	3'-9 ¹ / ₂ "
	BEARING (FAR)	3'-10"	3'-9 ³ / ₄ "
B	BEARING (NEAR)	4'-0 ³ / ₁₆ "	3'-11 ¹ / ₂ "
	MID-SPAN	3'-10 ⁷ / ₈ "	3'-9 ¹ / ₂ "
	BEARING (FAR)	4'-1 ¹ / ₂ "	3'-11 ¹ / ₂ "
C	BEARING (NEAR)	3'-11 ³ / ₄ "	3'-9 ³ / ₄ "
	MID-SPAN	3'-11 ⁷ / ₈ "	3'-9 ¹ / ₂ "
	BEARING (FAR)	4'-0 ⁷ / ₁₆ "	3'-9 ³ / ₄ "

INCREASE STATIONING

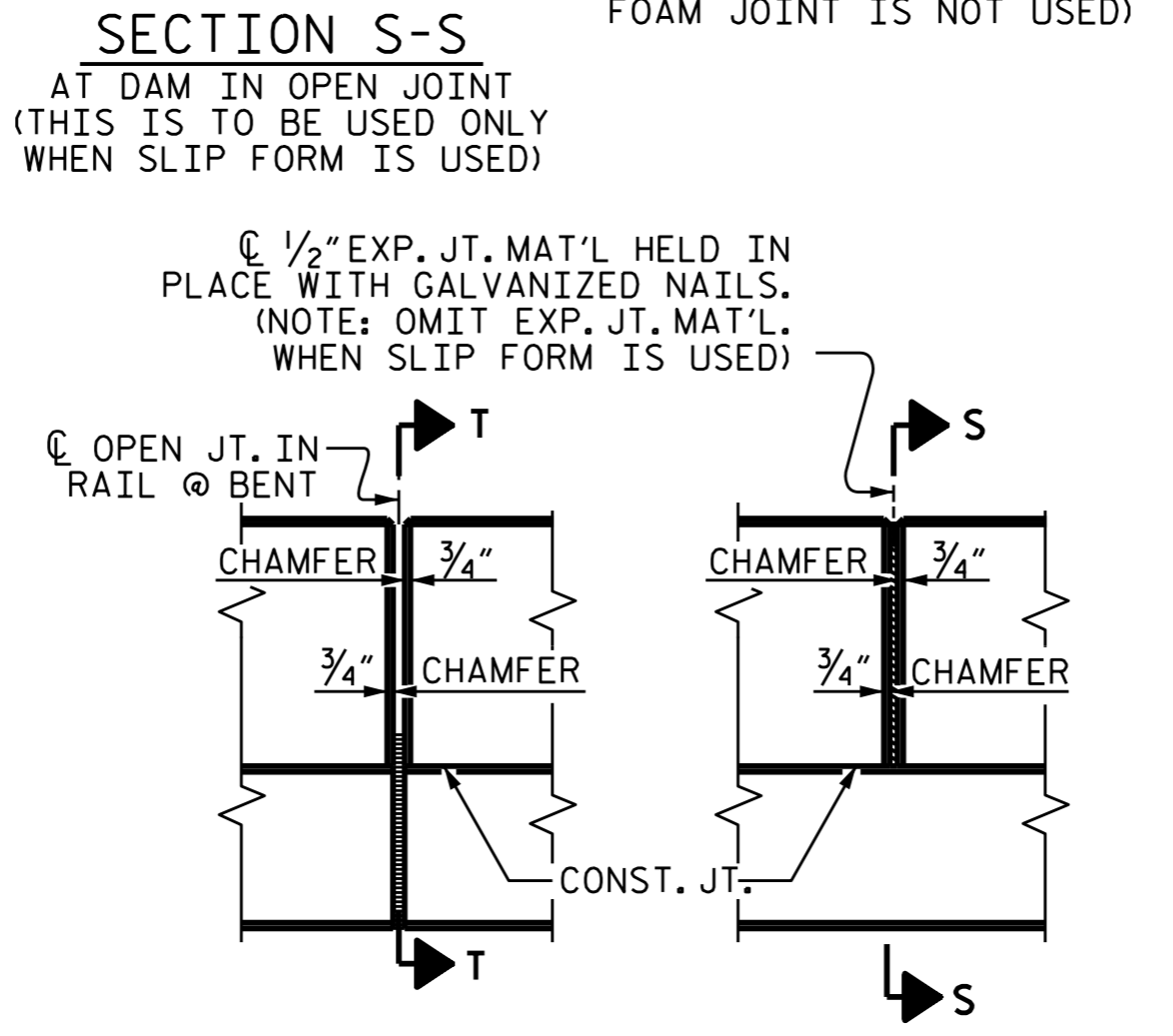
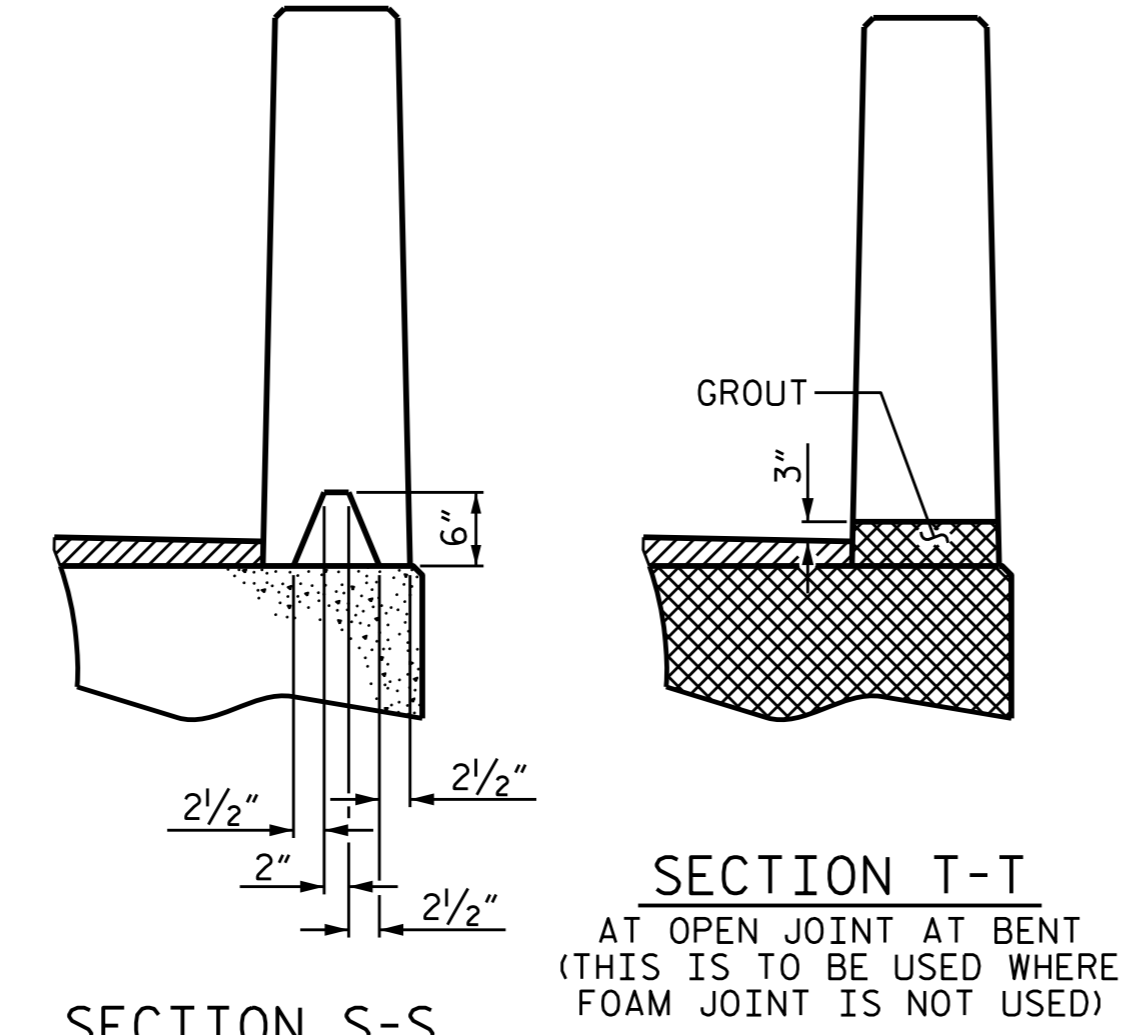
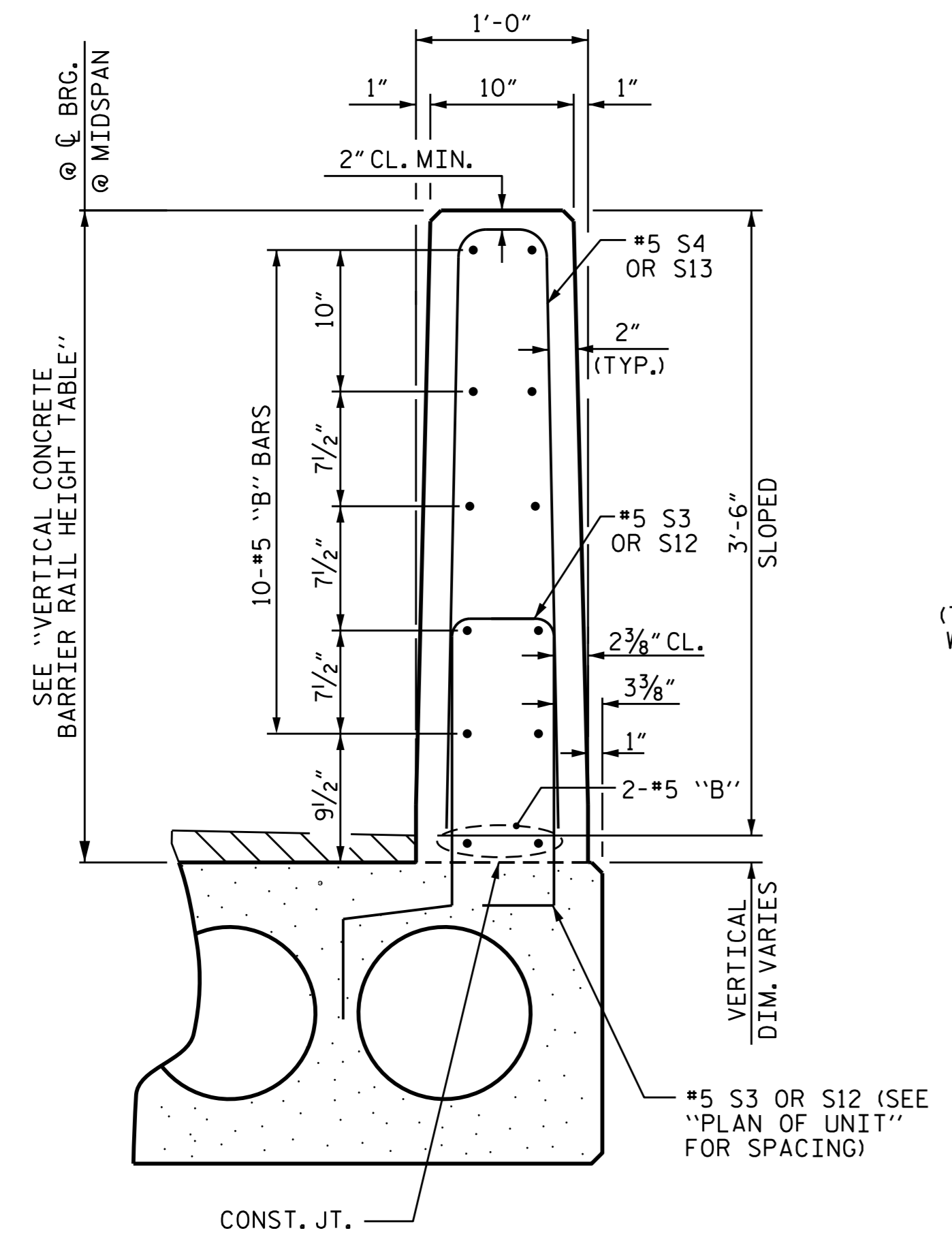
BILL OF MATERIAL FOR VERTICAL CONCRETE BARRIER RAIL						
BAR	BARS PER PAIR OF EXTERIOR UNITS	TOTAL NO.	SIZE	TYPE	LENGTH	WEIGHT
SPAN A (35' UNITS)						
*B10	96	96	#5	STR	10'-7"	1060
*S4	88	88	#5	2	7'-2"	658
* EPOXY COATED REINFORCING STEEL					LBS.	1718
CLASS AA CONCRETE					CU.YDS.	9.1
TOTAL VERTICAL CONCRETE BARRIER RAIL					LN. FT.	70.29
SPAN B (65' UNITS)						
*B24	144	144	#5	STR	12'-10"	1902
*S13	134	134	#5	2	7'-2"	1002
* EPOXY COATED REINFORCING STEEL					LBS.	2904
CLASS AA CONCRETE					CU.YDS.	17.5
TOTAL VERTICAL CONCRETE BARRIER RAIL					LN. FT.	130.29
SPAN C (35' UNITS)						
*B10	96	96	#5	STR	10'-7"	1060
*S4	88	88	#5	2	7'-2"	658
* EPOXY COATED REINFORCING STEEL					LBS.	1718
CLASS AA CONCRETE					CU.YDS.	9.3
TOTAL VERTICAL CONCRETE BARRIER RAIL					LN. FT.	70.29

BAR TYPE

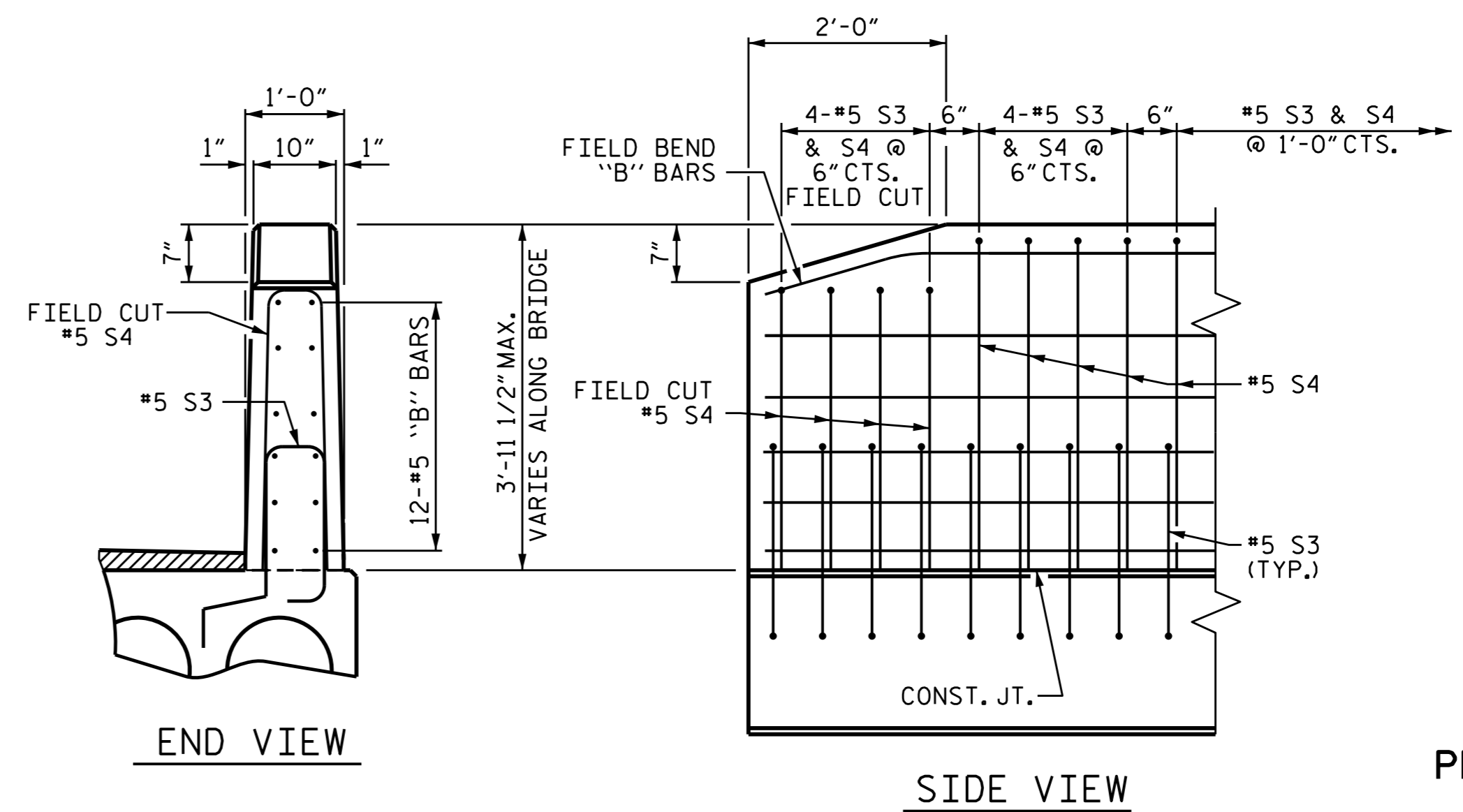


BAR DIMENSIONS ARE OUT TO OUT

TOTAL VERTICAL CONCRETE BARRIER RAIL FOR ENTIRE BRIDGE 270.87 LN. FT.



ELEVATION AT EXPANSION JOINTS



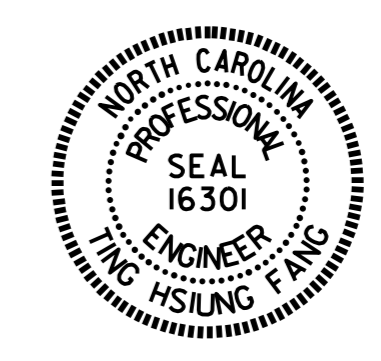
END OF RAIL DETAILS

VERTICAL CONCRETE BARRIER RAIL SECTION

RIGHT SIDE SHOWN, LEFT SIDE SIMILAR BY ROTATION.

PROJECT NO. B-4461
 CHATHAM COUNTY
 STATION: 19+12.00 -L-

SHEET 6 OF 6



DocuSigned by:
 Ting Fang
 E72086400977430L 4/12/2016

STATE OF NORTH CAROLINA		DEPARTMENT OF TRANSPORTATION		RALEIGH	
VERTICAL CONCRETE BARRIER RAIL DETAILS					
REVISIONS					
NO.	BY:	DATE:	NO.	BY:	DATE:
1			3		
2			4		
SHEET NO. S-11					TOTAL SHEETS 23

DOCUMENT NOT CONSIDERED FINAL UNLESS ALL SIGNATURES COMPLETED

ASSEMBLED BY : P.N.HOLDER	DATE : 5/30/13
CHECKED BY : F.R.LEA	DATE : 6/4/13
DRAWN BY : DGE 5/09	REV. 12/11
CHECKED BY : BCH 6/09	MAA/AAC