

NOTES

REPAIR LOCATIONS AND ESTIMATED QUANTITIES ARE GIVEN WITH THE BEST INFORMATION AVAILABLE. IF ADDITIONAL REPAIRS NOT SHOWN ON THE DRAWINGS ARE DEEMED NECESSARY BY THE ENGINEER, THE ENGINEER WILL NOTE ON THE DRAWINGS THE APPROXIMATE LOCATIONS AND DESCRIPTION OF THE REPAIRS AND ADJUST THE ACTUAL QUANTITIES ENTERED INTO THE AS-BUILT REPAIR QUANTITY TABLE.

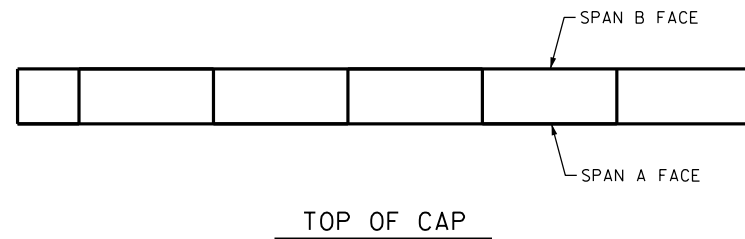
FOR CAP REPAIRS, SEE "TYPICAL CAP AND COLUMN REPAIR DETAILS" SHEET.

NO REPAIRS NOTED FOR BENT 1 DURING INSPECTION BY STRUCTURES MANAGEMENT UNIT. THE CONTRACTOR AND ENGINEER SHALL INSPECT THE BENT PRIOR TO BEGINNING WORK.

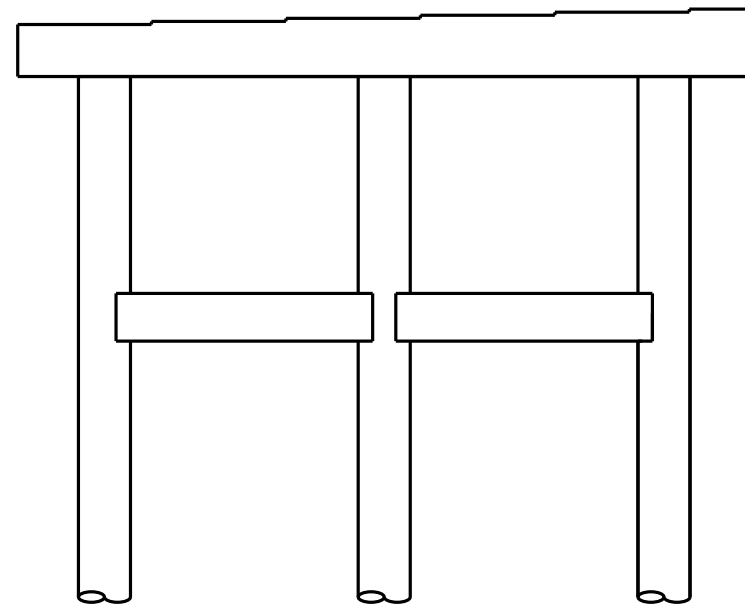
AS-BUILT REPAIR QUANTITY TABLE

REPAIRS BENT 1	QUANTITIES			
	ESTIMATE		ACTUAL	
SHOTCRETE REPAIRS	AREA SF	VOLUME CF	AREA SF	VOLUME CF
CAP	0.0	0.0		
COLUMN	0.0	0.0		
EPOXY RESIN INJECTION	LN. FT		LN. FT	
CAP	0.0			
COLUMN	0.0			
EPOXY COATING	SQ. FT		SQ. FT	
TOP OF BENT CAP	0			

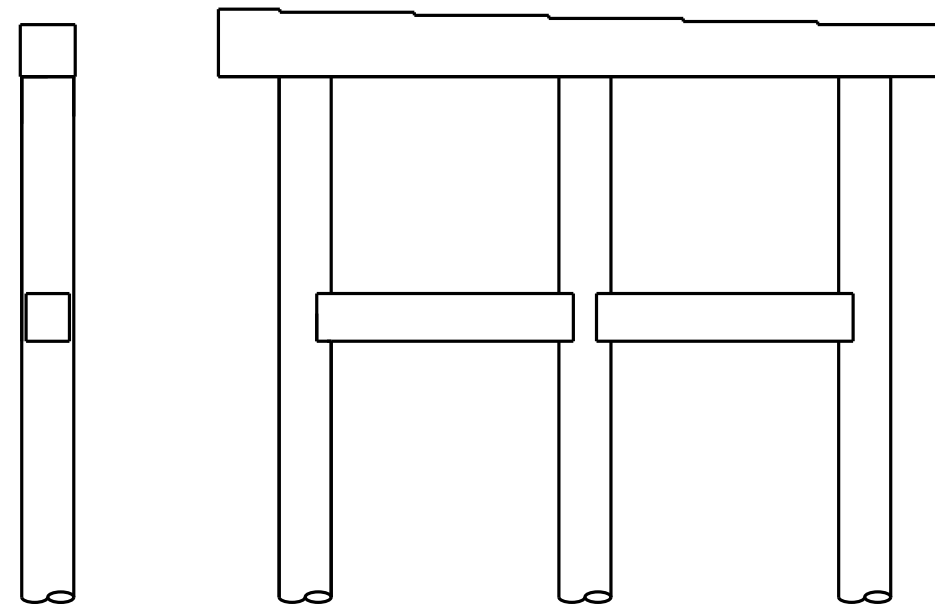
VALUES IN CHARTS REPRESENT ESTIMATED REPAIR TOTALS AFTER REMOVAL OF UNSOUND CONCRETE, MIN. OF 1" BEHIND REBAR AND MIN. 1" CLEAR TO SAWCUT.



TOP OF CAP



SPAN A FACE



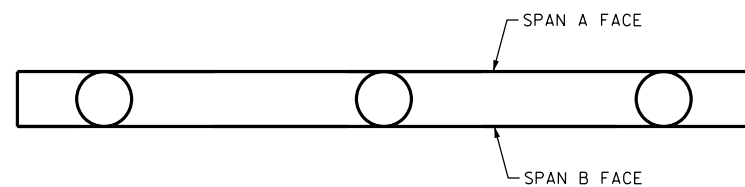
SPAN B FACE



END VIEW
NORTH FACE



END VIEW
SOUTH FACE



UNDERSIDE OF CAP

PROJECT NO. I-5756
HAYWOOD COUNTY
BRIDGE NO. 232

SHEET 1 OF 2

DocuSigned by:
John A. Yannaccone
7BC36E9C8E8450
NORTH CAROLINA
PROFESSIONAL
SEAL
32492
ENGINEER
JOHN A. YANNACCONI

3/21/2016

STATE OF NORTH CAROLINA
DEPARTMENT OF TRANSPORTATION
RALEIGH

BENT 1

DRAWN BY : W. O. KEITH DATE : 11/15
CHECKED BY : J. YANNACCONI DATE : 12/15

21-MAR-2016 13:17
R:\Structures\Final Drawings\430232\430232_SD.B*.dgn
Jayannaccone

DOCUMENT NOT CONSIDERED
FINAL UNLESS ALL
SIGNATURES COMPLETED

REVISIONS						SHEET NO.
NO.	BY:	DATE:	NO.	BY:	DATE:	TOTAL SHEETS
1			3			S-117
2			4			122