

AS-BUILT REPAIR QUANTITY TABLE








TOP OF DECK REPAIRS

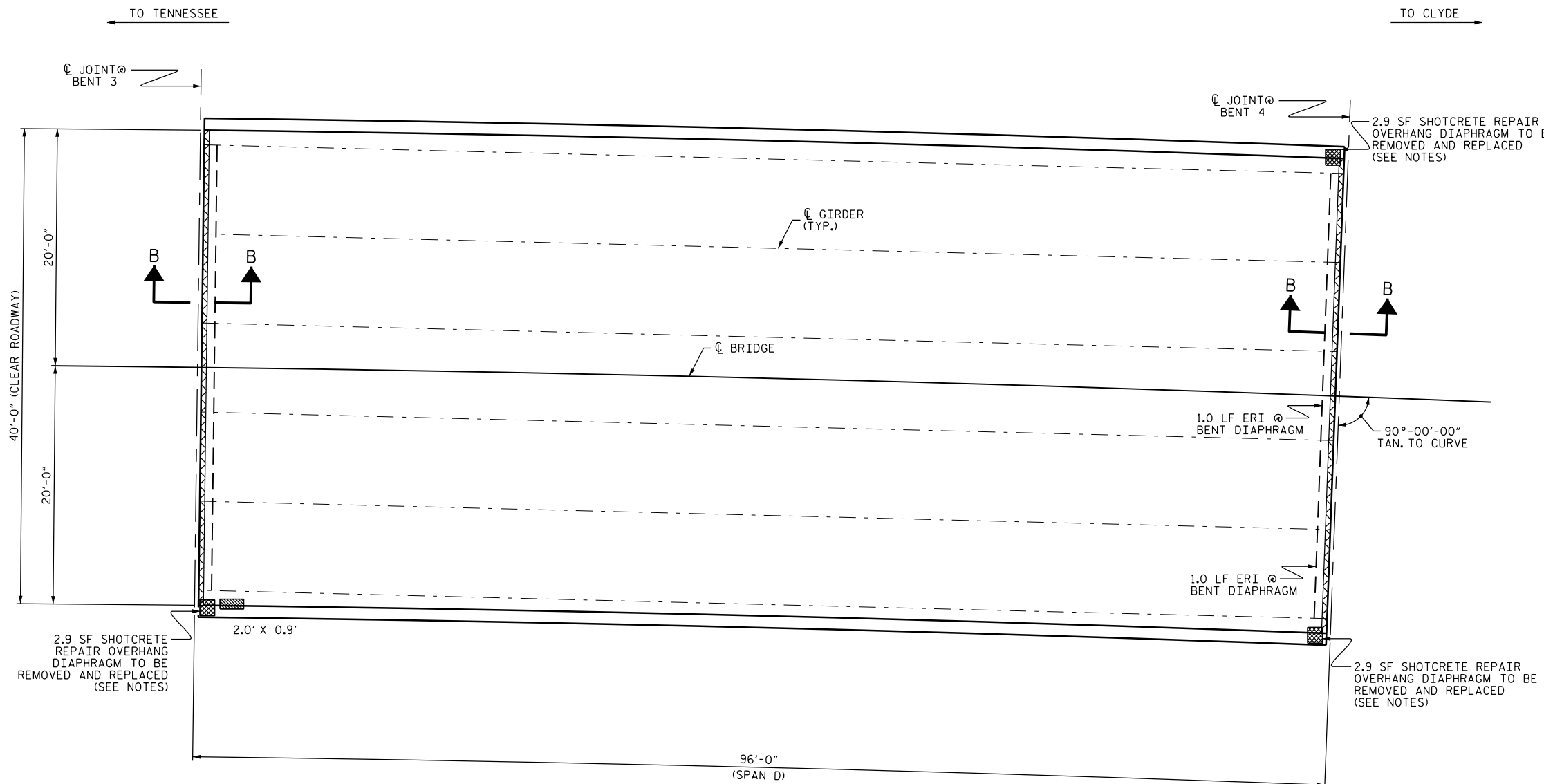
	ESTIMATE	ACTUAL
SCARIFYING BRIDGE DECK	422 SY	
HYDRO-DEMOLITION OF BRIDGE DECK	422 SY	
CLASS II SURFACE PREPARATION	0.0 SY	
CLASS III SURFACE PREPARATION	0.0 SY	
BRIDGE JOINT DEMOLITION	40.0 SF	
CLASS AA CONCRETE FOR CLASS III SURFACE PREPARATION	0.0 CY	

UNDERSIDE OF DECK REPAIRS

	ESTIMATE		ACTUAL	
	AREA SF	VOLUME CF	AREA SF	VOLUME CF
SHOTCRETE REPAIRS				
UNDERSIDE OF DECK	0.0	0.0		
OVERHANG DIAPHRAGMS	8.7	4.5		
UNDERSIDE OF OVERHANG	1.8	1.0 *		
INTERIOR DIAPHRAGMS	0.0	0.0		
UNDERSIDE EPOXY RESIN INJECTION				
	2.0 LF			

VALUES IN CHARTS REPRESENT ESTIMATED UNDERSIDE OF DECK REPAIR TOTALS AFTER REMOVAL OF UNSOUND CONCRETE, MIN. OF 1" BEHIND REBAR AND MIN. 1" CLEAR TO SAWCUT. SEE REPAIR DETAILS.

-  APPROX. CLASS II AREA
-  APPROX. CLASS III AREA
-  BRIDGE JOINT DEMOLITION
-  UNDERSIDE REPAIR
-  DIAPHRAGM REPAIR
-  #1 TEST LOCATION
-  ERI EPOXY RESIN INJECTION



PLAN

NOTES

REPAIR LOCATIONS AND ESTIMATED QUANTITIES ARE GIVEN WITH THE BEST INFORMATION AVAILABLE. IF ADDITIONAL REPAIRS NOT SHOWN ON THE DRAWINGS ARE DEEMED NECESSARY BY THE ENGINEER, THE ENGINEER WILL NOTE ON THE DRAWINGS THE APPROXIMATE LOCATIONS AND DESCRIPTION OF THE REPAIRS AND ADJUST THE ACTUAL QUANTITIES ENTERED INTO THE AS-BUILT REPAIR QUANTITY TABLE.

THE EXISTING REINFORCING STEEL IN THE OVERHANG DIAPHRAGMS SHALL REMAIN IN PLACE. REINFORCING BARS SHALL BE CLEANED AND BENT TO THEIR ORIGINAL SHAPE. ANY DAMAGED BARS SHALL BE REPLACED. THE UNIT CONTRACT PRICE BID FOR "SHOTCRETE REPAIRS" WILL BE FULL COMPENSATION FOR THIS WORK.

FOR UNDERSIDE OF DECK AND DIAPHRAGM REPAIRS, SEE "OVERHANG & DIAPHRAGM REPAIRS DETAILS" SHEET.

FOR SECTION B-B, SEE "JOINT DETAILS" SHEET.

* QUANTITY HAS BEEN INCREASED DUE TO THE POTENTIAL FOR FURTHER DETERIORATION SINCE THE FIELD INSPECTION BY STRUCTURES MANAGEMENT UNIT.

DocuSigned by:

John A. Yannaccone

7BC36E9C63



3/21/2016

PROJECT NO. I-5756
 HAYWOOD COUNTY
 BRIDGE NO. 230

SHEET 4 OF 5

STATE OF NORTH CAROLINA
 DEPARTMENT OF TRANSPORTATION
 RALEIGH

PLAN OF SPANS
 SPAN D

DRAWN BY : H. T. BARBOUR DATE : 11/15
 CHECKED BY : J. YANNACCONE DATE : 12/15

21-MAR-2016 13:16
 R:\Structures\Final Drawings\430230\430230.SD.S*.dgn
 Jayannaccone

DOCUMENT NOT CONSIDERED
 FINAL UNLESS ALL
 SIGNATURES COMPLETED

REVISIONS						SHEET NO.
NO.	BY:	DATE:	NO.	BY:	DATE:	TOTAL SHEETS
1			3			S-89
2			4			122