

NOTES

REPAIR LOCATIONS AND ESTIMATED QUANTITIES ARE GIVEN WITH THE BEST INFORMATION AVAILABLE. IF ADDITIONAL REPAIRS NOT SHOWN ON THE DRAWINGS ARE DEEMED NECESSARY BY THE ENGINEER, THE ENGINEER WILL NOTE ON THE DRAWINGS THE APPROXIMATE LOCATIONS AND DESCRIPTION OF THE REPAIRS AND ADJUST THE ACTUAL QUANTITIES ENTERED INTO THE AS-BUILT REPAIR QUANTITY TABLE.

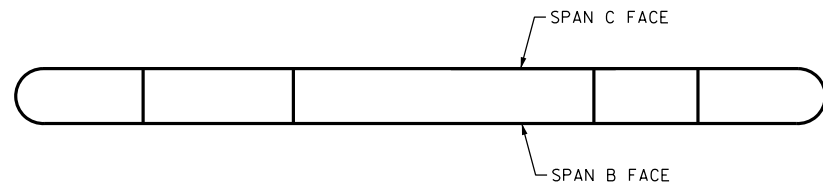
FOR CAP REPAIRS, SEE "TYPICAL CAP AND COLUMN REPAIR DETAILS" SHEET.

AS-BUILT REPAIR QUANTITY TABLE

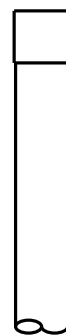
REPAIRS BENT 2	QUANTITIES			
	ESTIMATE		ACTUAL	
SHOTCRETE REPAIRS	AREA SF	VOLUME CF	AREA SF	VOLUME CF
CAP	0.0	0.0		
COLUMN	0.0	0.0		
EPOXY RESIN INJECTION			LN. FT	LN. FT
CAP			0.0	
COLUMN			0.0	
EPOXY COATING			SQ. FT	SQ. FT
TOP OF BENT CAP			0	

VALUES IN CHARTS REPRESENT ESTIMATED REPAIR TOTALS AFTER REMOVAL OF UNSOUND CONCRETE, MIN. OF 1" BEHIND REBAR AND MIN. 1" CLEAR TO SAWCUT.

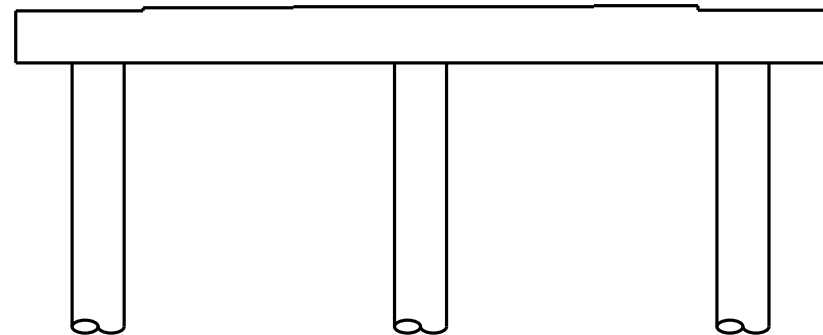
NO REPAIRS NOTED FOR BENT 2 DURING INSPECTION BY STRUCTURES MANAGEMENT UNIT. THE CONTRACTOR AND ENGINEER SHALL INSPECT THE BENT PRIOR TO BEGINNING WORK.



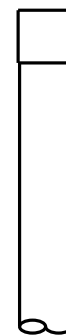
TOP OF CAP



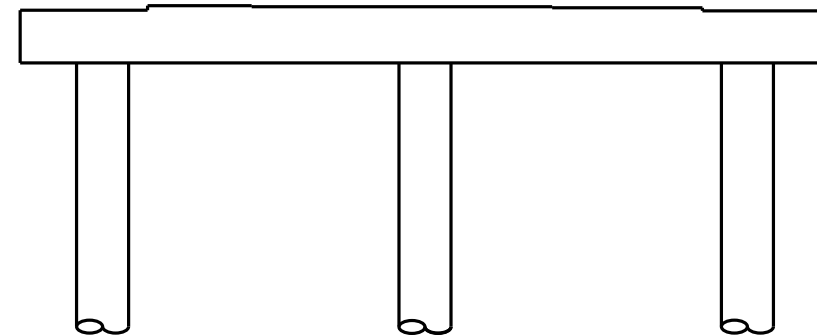
END VIEW NORTH FACE



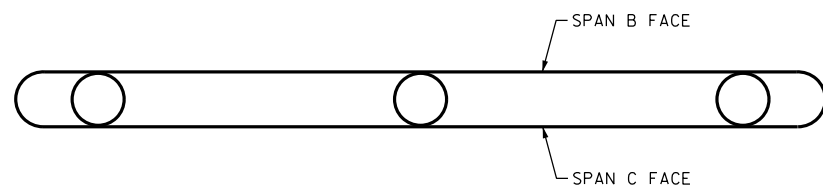
SPAN B FACE



END VIEW SOUTH FACE



SPAN C FACE

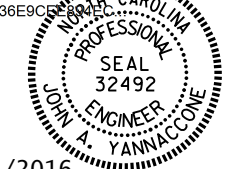


UNDERSIDE OF CAP

PROJECT NO. I-5756  
 HAYWOOD COUNTY  
 BRIDGE NO. 224

SHEET 2 OF 2

DocuSigned by:  
 John A. Yannaccone  
 7BC36E9C...



3/21/2016

STATE OF NORTH CAROLINA  
 DEPARTMENT OF TRANSPORTATION  
 RALEIGH

BENT 2

DRAWN BY : R. Z. DEAN DATE : 09/15  
 CHECKED BY : J. YANNACCONE DATE : 12/15

DOCUMENT NOT CONSIDERED FINAL UNLESS ALL SIGNATURES COMPLETED

REVISIONS						SHEET NO.
NO.	BY:	DATE:	NO.	BY:	DATE:	S-65
1			3			TOTAL SHEETS
2			4			122