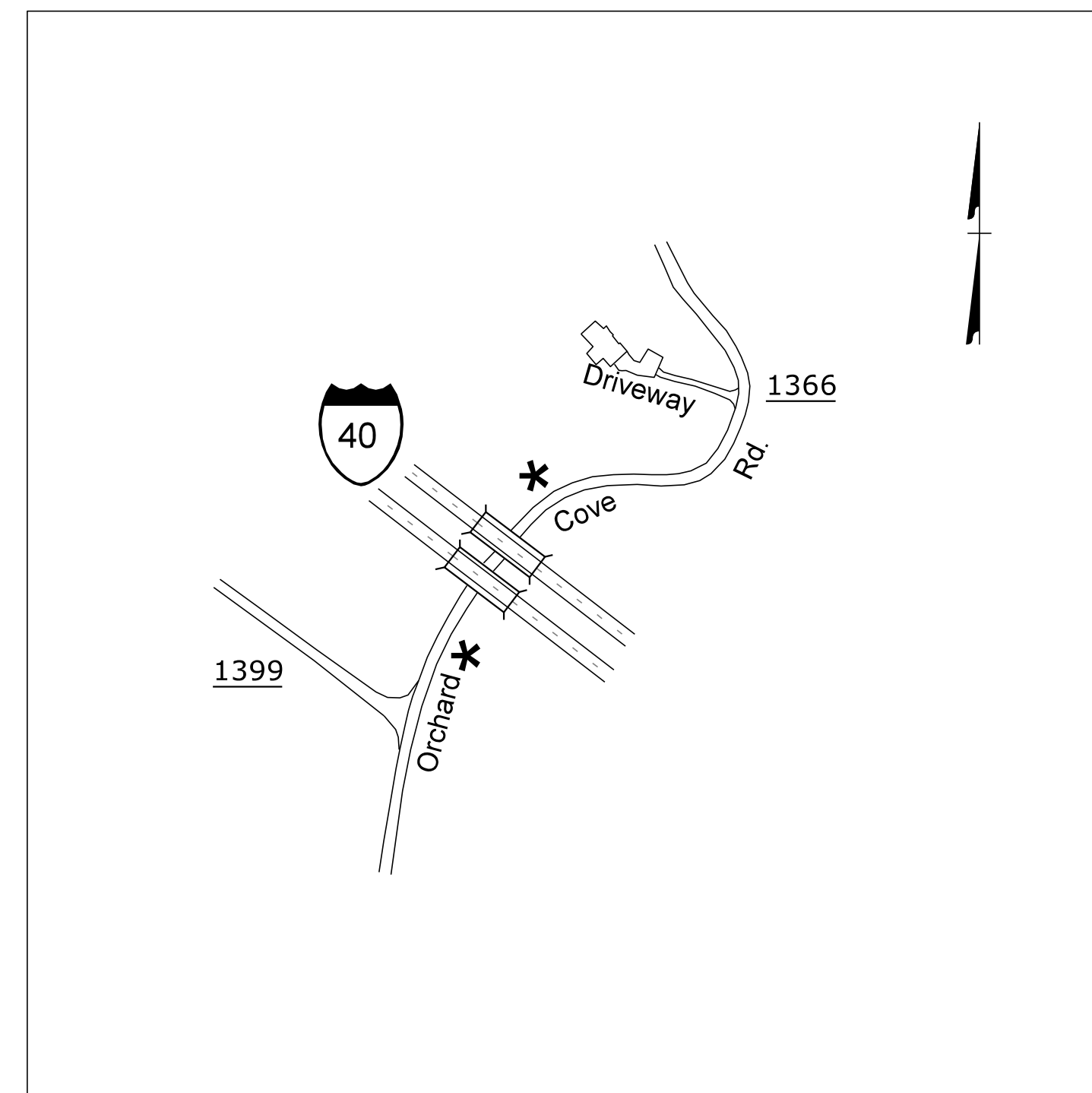
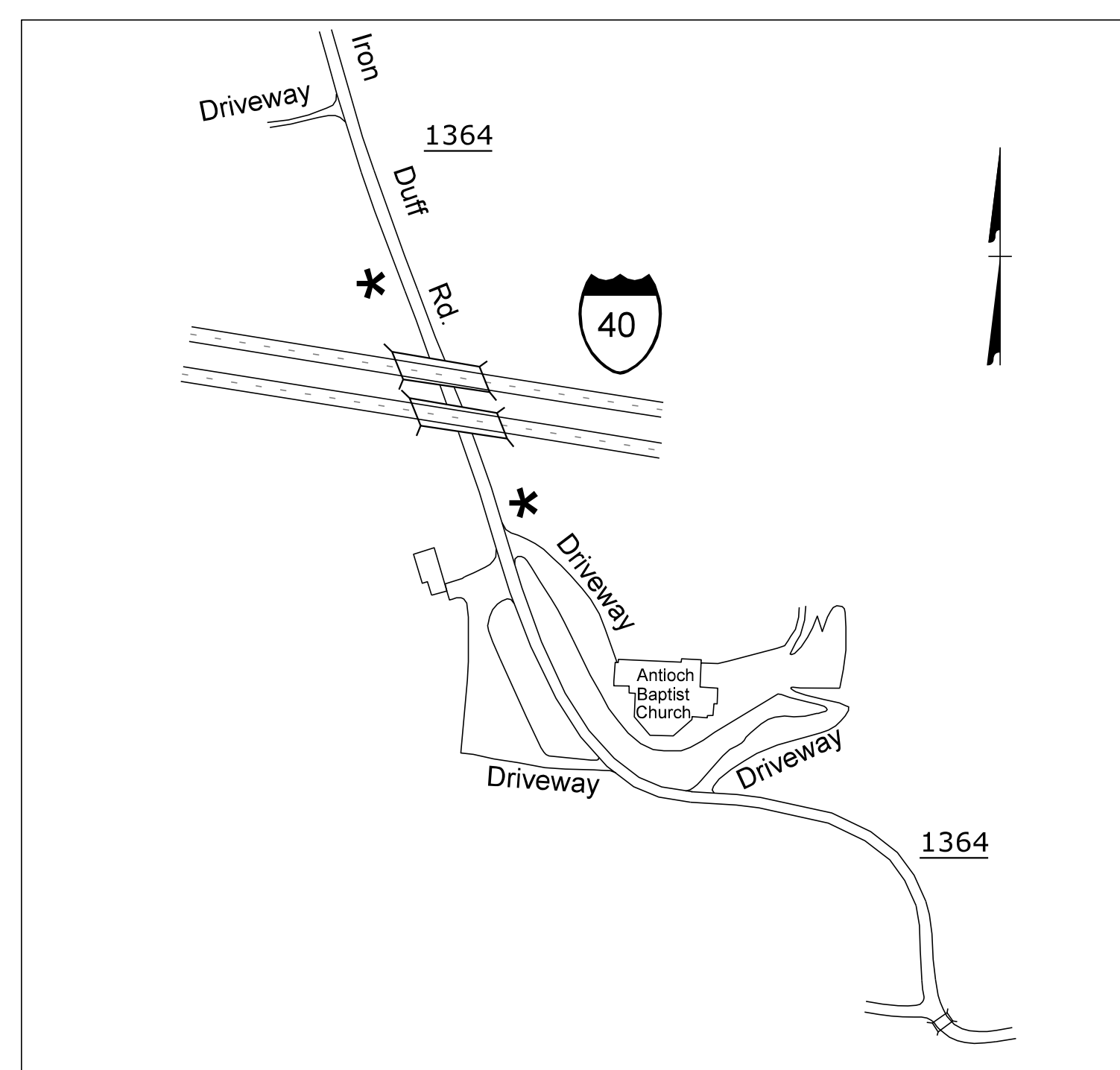


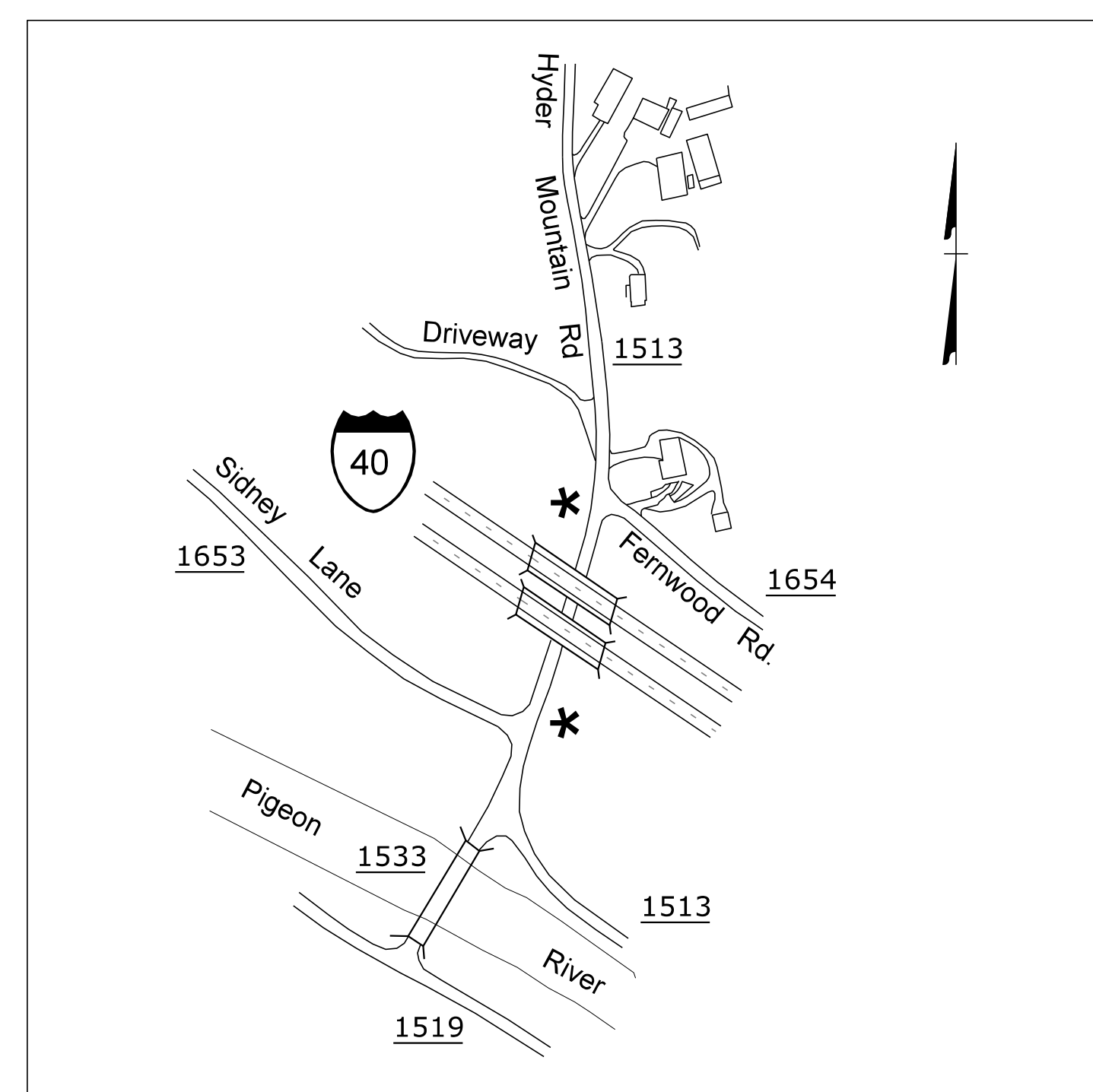
BRIDGES #205 (EB), #208 (WB)



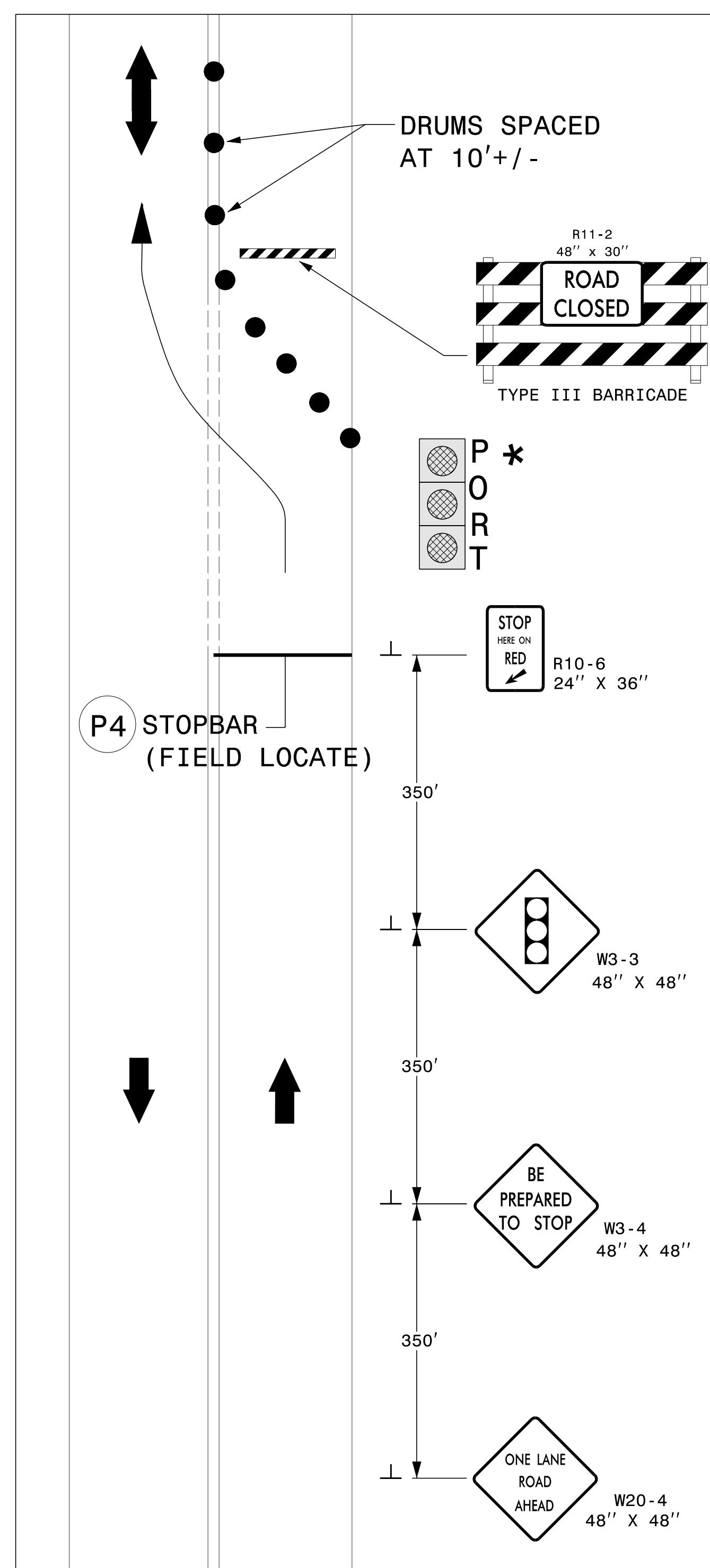
BRIDGES #209 (EB), #222 (WB)



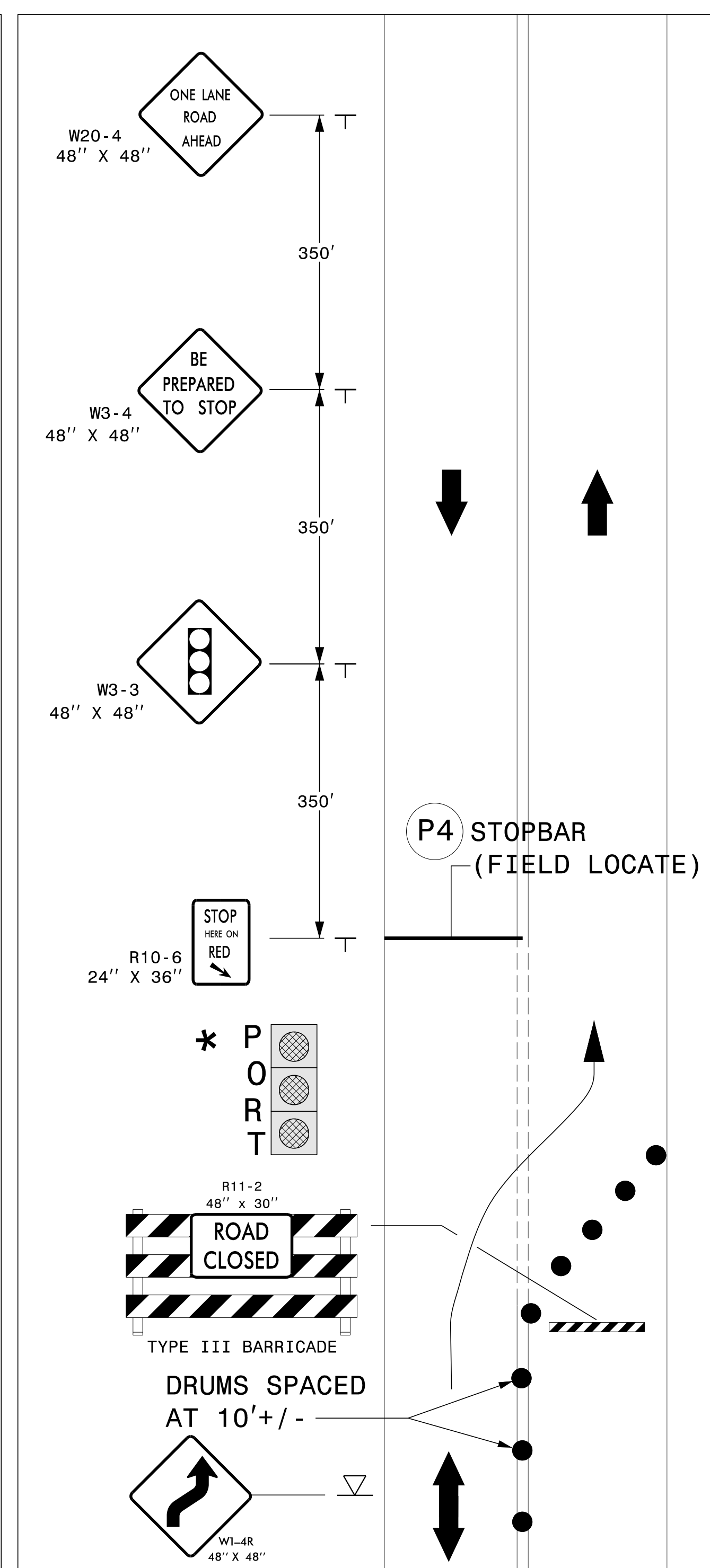
BRIDGES #223 (EB), #224 (WB)



BRIDGES #231 (EB), #232 (WB)



DETAIL AT APPROACHES TO PORTABLE SIGNALS



DETAIL AT APPROACHES TO PORTABLE SIGNS

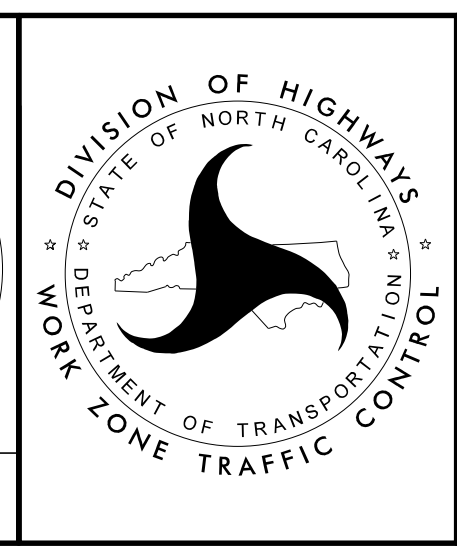
TEMPORARY PAVEMENT MARKING/MARKER LEGEND	
	PAINT - WHITE STOP BAR (24")

LEGEND
 * — FIELD LOCATE PORTABLE SIGNAL

APPROVED: *J.W. Woolard Jr.*
 DATE: 4/4/2016

SEAL 019862
 ENGINEER
 J.W. WOOLARD, JR.

DOCUMENT NOT CONSIDERED FINAL UNLESS ALL SIGNATURES COMPLETED



PORTABLE SIGNAL APPLICATIONS

4/4/2016
 P:\TIP\Projects\N5756\TrafficControl\I-5756_TC_TMP_09.dgn
 User:rmgarratt