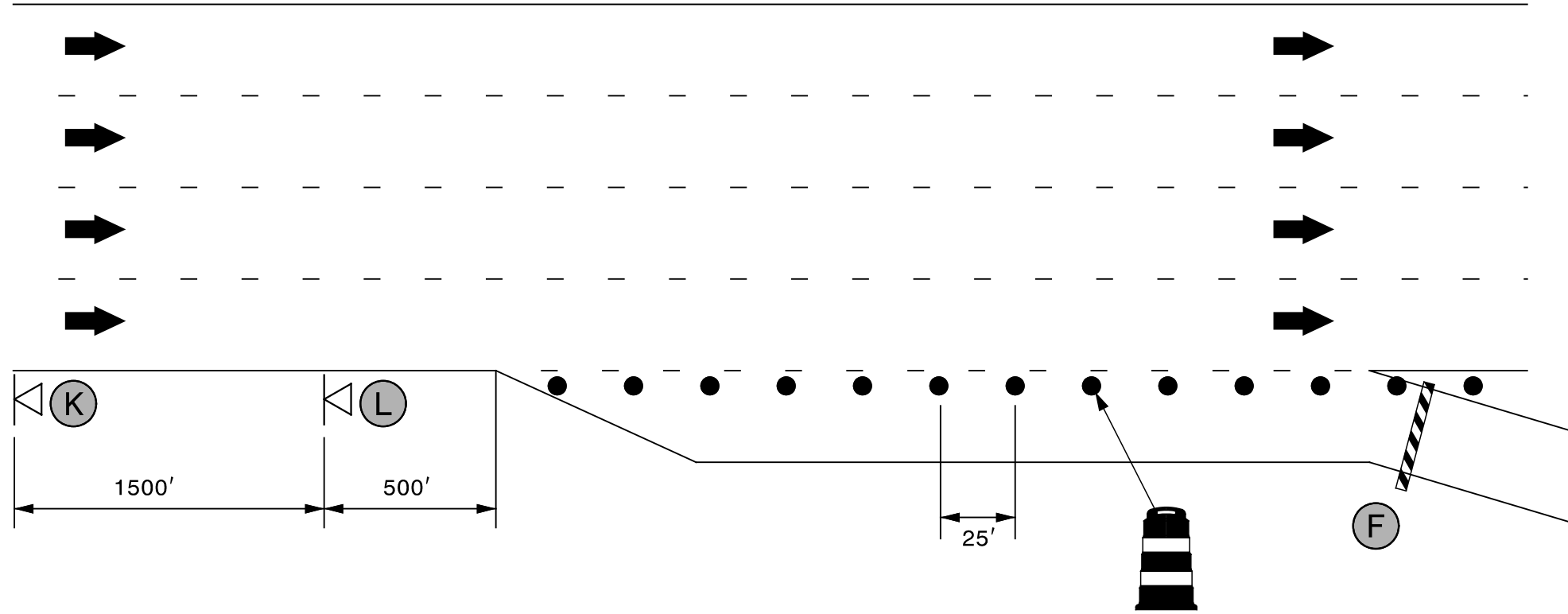
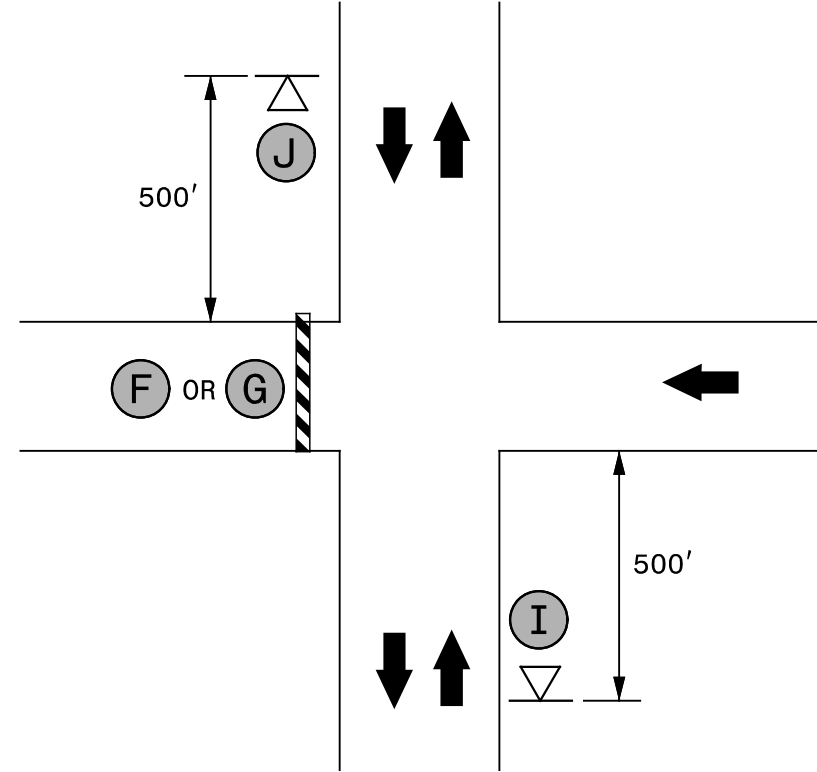


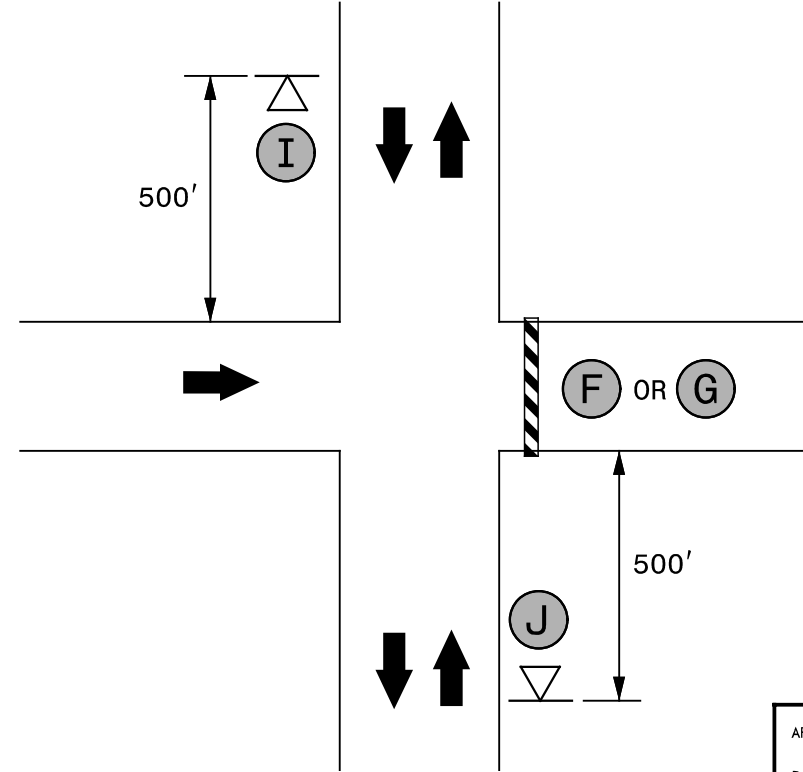
# RAMP A, RAMP C CLOSURE



## RAMP B, LOOP C CLOSURE

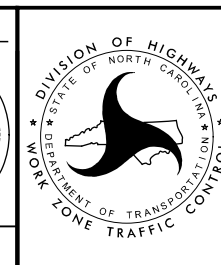


## RAMP D CLOSURE



NOTE: SEE TMP-2 FOR SIGN LEGEND

APPROVED: *Steve Miller*  
 DATE: 12/4/2015  
 SEAL  
 DOCUMENT NOT CONSIDERED FINAL  
 UNLESS ALL SIGNATURES COMPLETED



DIVISION OF HIGHWAYS  
 STATE OF NORTH CAROLINA  
 DEPARTMENT OF TRANSPORTATION  
 WORK ZONE TRAFFIC CONTROL  
 RAMP CLOSURE TYPICAL

**SEPI**  
 ENGINEERING & CONSTRUCTION  
 1025 Wade Avenue  
 Raleigh, NC 27605  
 Tel: 919-789-9977  
 Fax: 919-789-9591  
 License: C-2197

I:\30\2015\G:\Traffic\I-5734-5762\I-5734-5762 TMP-10.dgn