

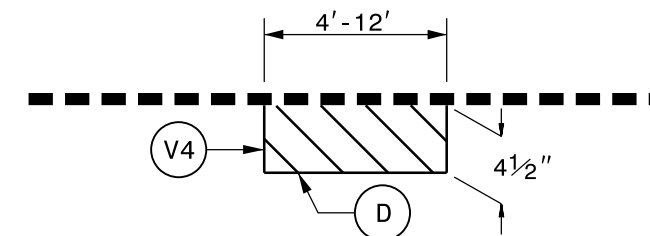
### TYPICAL SECTION NO. 13

TO BE USED ON MAPS 12, 15

MAP 12: STA. 103+90 TO STA.144+86

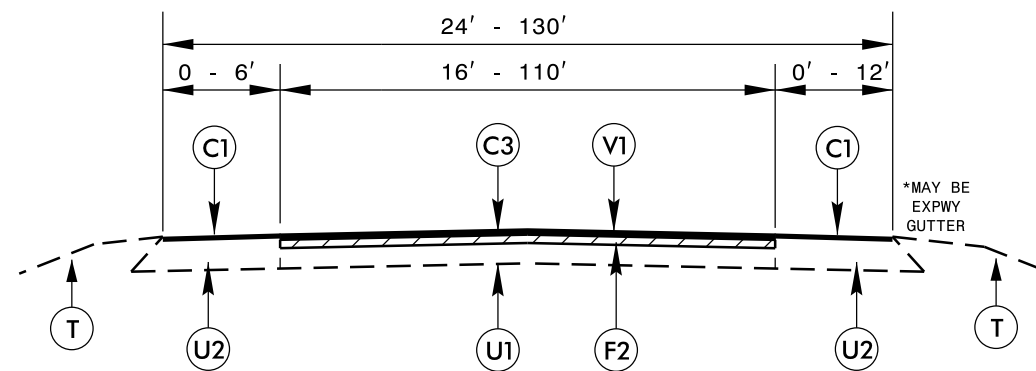
MAP 15: STA. 85+00 TO STA. 128+45

### PATCHING DETAIL 1



MILL EXISTING ASPHALT PAVEMENT 4 1/2" IN DEPTH AND FILL WITH INTERMEDIATE COURSE, TYPE I19.0B AT LOCATIONS AS DIRECTED BY THE ENGINEER.

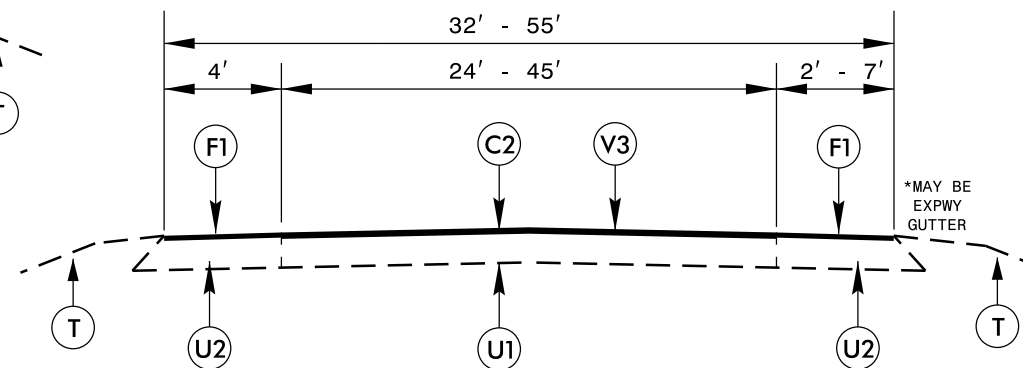
TO BE USED IN CONJUNCTION WITH MAPS 9, 12 AND 15



### TYPICAL SECTION NO. 14

TO BE USED ON MAPS 13, 16

MAP 16: STA. 13+05 TO STA.22+60



### TYPICAL SECTION NO. 15

TO BE USED ON MAP 9

MAP 9: STA. 10+33 TO STA.22+81

### PAVEMENT SCHEDULE

C1	PROP. APPROX. 1 1/2" S9.5C AT AN AVG. RATE OF 168 LBS PER SQ. YD.
C2	PROP. APPROX. 2" S9.5D AT AN AVG. RATE OF 224 LBS PER SQ. YD.
C3	PROP. APPROX. 3" ASPHALT CONCRETE SURFACE COURSE, TYPE S9.5C, AT AN AVG. RATE OF 168 LBS PER SQ. YD. IN EACH OF TWO LAYERS
C4	PROP. APPROX. 3/4" OPEN-GRADED ASPHALT FRICTION COURSE, TYPE FC-2 MODIFIED, AT AN AVERAGE RATE OF 90 LBS PER SQ. YD.
D	PROP. APPROX. 4 1/2" ASPHALT CONCRETE INTERMEDIATE COURSE, TYPE I19.0B, AT AN AVERAGE RATE OF 513 LBS. PER SQ. YD. IN ONE LIFT
F1	PROPOSED FOG SEAL TO BE APPLIED TO THE EXISTING ASPHALT SHOULDER
F2	AST MAT COAT, #67 STONE
R	EXISTING CONCRETE STRUCTURE
T	EXISTING EARTH MATERIAL
U1	EXISTING TRAVELWAY
U2	EXISTING PAVED SHOULDER.
V1	1 1/2" MILLING
V2	MILLED RUMBLE STRIP
V3	2" MILLING
V4	4 1/2" MILLING FOR PATCHING
Y	PROPOSED DIAMOND GRINDING