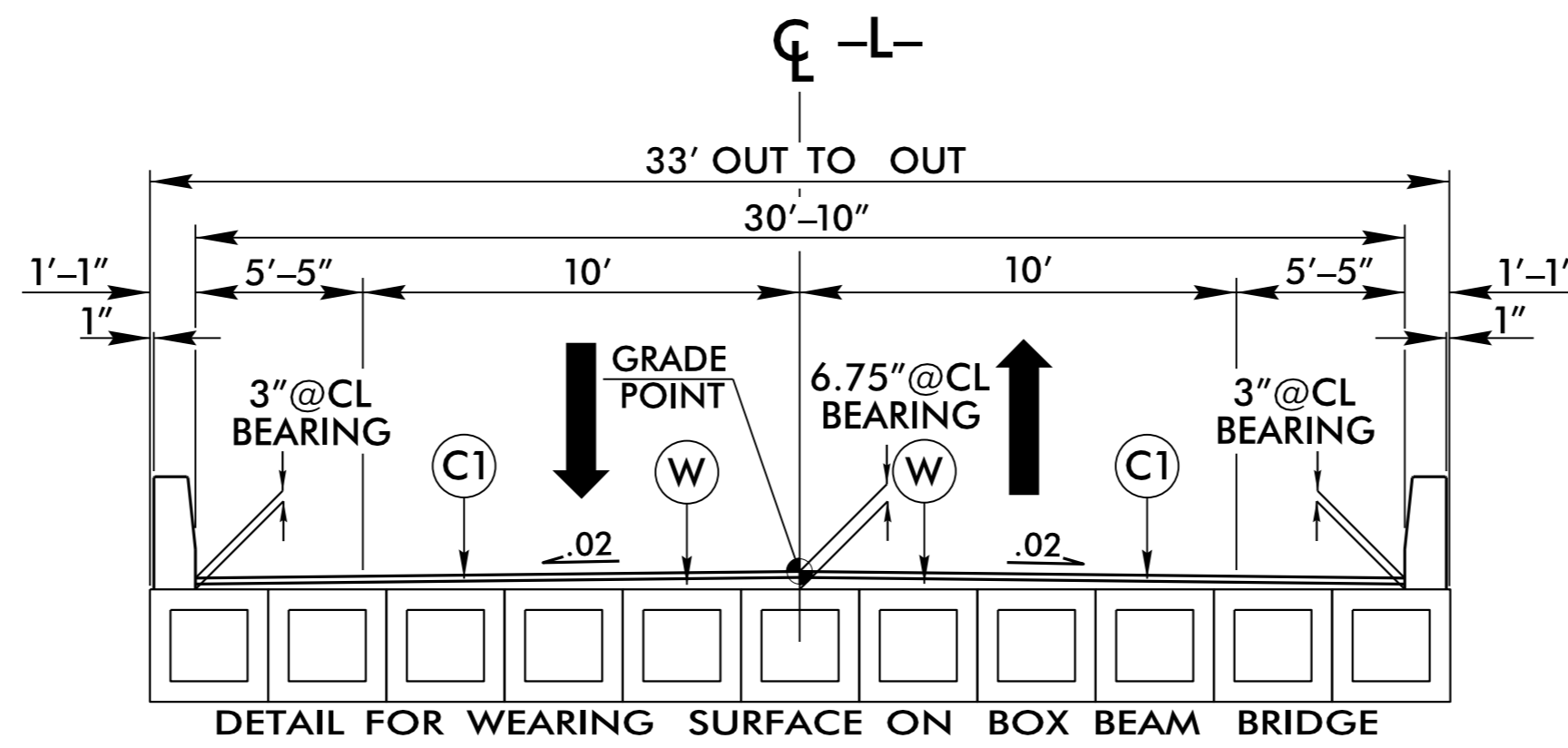


6/2/99



TYPICAL SECTION NO. 3

USE TYPICAL SECTION NO. 3

-L- STA. 16 + 68.50 (BEGIN BRIDGE) TO STA. 17 + 73.50 (END BRIDGE)

PROJECT REFERENCE NO. B-5344		SHEET NO. 2A-2	
ROADWAY DESIGN ENGINEER DANIEL W. GARDNER, JR. 2/16/16 SEAL 033871 NORTH CAROLINA PROFESSIONAL ENGINEER		PAVEMENT DESIGN ENGINEER CLARK S. MORRISON 2/15/16 SEAL 022896 NORTH CAROLINA PROFESSIONAL ENGINEER	
DOCUMENT NOT CONSIDERED FINAL UNLESS ALL SIGNATURES COMPLETED			
C1	PROP. 2 1/2" SF9.5A		
C2	PROP. VAR. DEPTH 2 1/2" SF9.5A		
E1	PROP. 5" B25.0B		
E2	PROP. VAR. DEPTH B25.0B		
T	EARTH MATERIAL		
U	EXISTING PAVEMENT		
W	VAR. DEPTH WEDGING		

03_FEB-2016 10:30 B5344_Rdy.tpd.dgn
1488015871